

**NEW MEXICO OIL CONSERVATION COMMISSION
WELL LOCATION AND ACREAGE DEDICATION PLAT**

Form C-102
Supersedes C-128
Effective 1-1-65

All distances must be from the outer boundaries of the Section.

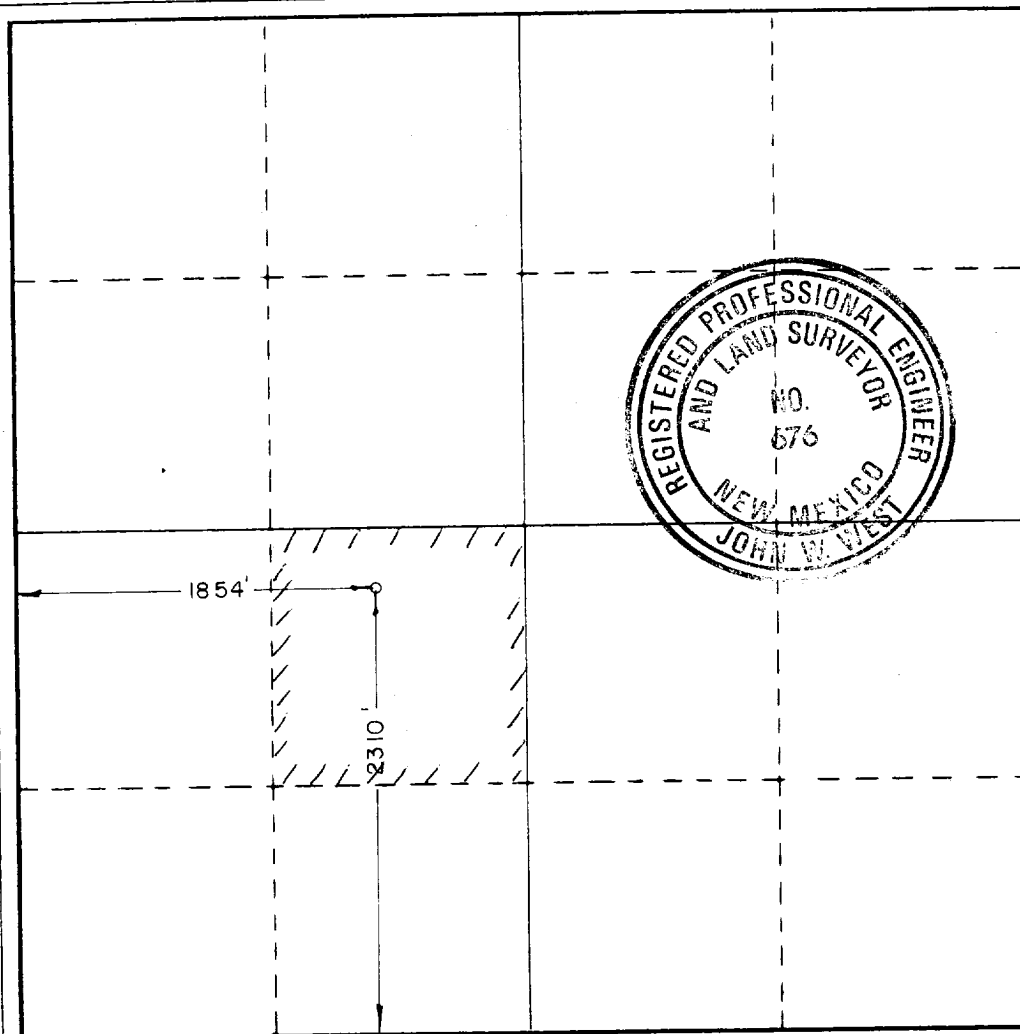
Operator ENSERCH EXPLORATION, INC.			Lease LAMBIRTH		Well No. 12
Tract Letter K	Section 31	Township 5 SOUTH	Range 33 EAST	County ROOSEVELT	
Actual Footage Location of Well: 2310 feet from the SOUTH line and 1854 feet from the WEST line					
Ground Level Elev. 4410.7	Producing Formation Penn.		Pool South Peterson (Penn.)		Dedicated Acreage: 40 Acres

1. Outline the acreage dedicated to the subject well by colored pencil or hachure marks on the plat below.
2. If more than one lease is dedicated to the well, outline each and identify the ownership thereof (both as to working interest and royalty).
3. If more than one lease of different ownership is dedicated to the well, have the interests of all owners been consolidated by communitization, unitization, force-pooling, etc?

☐ Yes ☐ No If answer is "yes," type of consolidation _____

If answer is "no," list the owners and tract descriptions which have actually been consolidated. (Use reverse side of this form if necessary.) _____

No allowable will be assigned to the well until all interests have been consolidated (by communitization, unitization, forced-pooling, or otherwise) or until a non-standard unit, eliminating such interests, has been approved by the Commission.



CERTIFICATION

I hereby certify that the information contained herein is true and complete to the best of my knowledge and belief.

Name

G. H. Peeples

Position

Regional Drilling Manager

Company

Enserch Exploration, Inc.

Date

February 4, 1985

I hereby certify that the well location shown on this plat was plotted from field notes of actual surveys made by me or under my supervision, and that the same is true and correct to the best of my knowledge and belief.

Date Surveyed

JANUARY 29, 1985

Registered Professional Engineer and/or Land Surveyor

Certificate No. **JOHN W. WEST,**

676

RONALD J. EIDSON,

3239

0 330 660 990 1320 1650 1980 2310 2640 2970 3300 3630 3960 4290 4620 4950 5280 5610 5940 6270 6600