

NO. OF COPIES RECEIVED	
DISTRIBUTION	
SANTA FE	
FILE	
U.S.G.S.	
LAND OFFICE	
OPERATOR	

5A. Indicate Type of Lease
STATE <input type="checkbox"/> FEE <input checked="" type="checkbox"/>

5. State Oil & Gas Lease No.

APPLICATION FOR PERMIT TO DRILL, DEEPEN, OR PLUG BACK

Type of Work

DRILL ☒DEEPEN ☐PLUG BACK ☐

Type of Well

OIL WELL ☐GAS WELL ☒

OTHER

SINGLE ZONE ☐MULTIPLE ZONE ☐

Name of Operator

Yates Petroleum Corporation

Address of Operator

207 South 4th, Artesia, New Mexico 88210

Location of Well

UNIT LETTER N

LOCATED 660

FEET FROM THE

South

LINE

1980

FEET FROM THE West

LINE OF SEC. 33

TWP. 3S

RGE. 30E

NMPM

7. Unit Agreement Name

8. Farm or Lease Name

Bravo "ABO"

9. Well No.

1

10. Field and Pool, or Wildcat

Wildcat-Granite

12. County

Roosevelt

18. Proposed Depth

8500'

19A. Formation

Granite

20. Rotary or C.T.

Rotary

19. Casing (Type, Weight, etc.)

4446 GL

21A. Risk & Status Prog. Bond

Blanket

21B. Drilling Contractor

Young 4

22. Approx. Date Work will start

ASAP

PROPOSED CASING AND CEMENT PROGRAM

SIZE OF HOLE	SIZE OF CASING	WEIGHT PER FOOT	SETTING DEPTH	SACKS OF CEMENT	EST. TOP
17 1/2"	13 3/8"	48# H-40	400'	400 sx	circ
12 1/4"	9 5/8"	36# K-55	2400'	400 sx	circ
7 7/8"	5 1/2"	15.5 + 17# K-55	TD	250 sx	

We propose to drill and test the Granite and intermediate formations. Approximately 400' of surface casing will be set and cement circulated to shut off gravel and caving. If commercial, production casing will be run and cemented with adequate cover, perforated and stimulated as needed for production.

MUD PROGRAM: FW gel/LCM surface to 400', FW to 2400', SW gel/starch to TD.

BOP PROGRAM: BOP's will be installed at the offset and tested daily.

GAS NOT DEDICATED.

Permit Expires 6 Months From Approval
Date Unless Drilling Underway.

BOVE SPACE DESCRIBE PROPOSED PROGRAM: IF PROPOSAL IS TO DEEPEN OR PLUG BACK, GIVE DATA ON PRESENT PRODUCTIVE ZONE AND PROPOSED NEW PRODUCTION ZONE. GIVE BLOWOUT PREVENTER PROGRAM, IF ANY.

by certify that the information above is true and complete to the best of my knowledge and belief.

by Cy Cowan Title Regulatory Agent Date 02/19/85

(This space for State Use)

ORIGINAL SIGNED BY JERRY SEXTON

APPROVED BY DISTRICT 1 SUPERVISOR TITLE

CONDITIONS OF APPROVAL, IF ANY:

DATE

FEB 20 1985

NE EXICO OIL CONSERVATION COMMISSION
WELL LOCATION AND ACREAGE DEDICATION PLAT

Form C-102
Supersedes C-128
Effective 1-1-65

All distances must be from the outer boundaries of the Section.

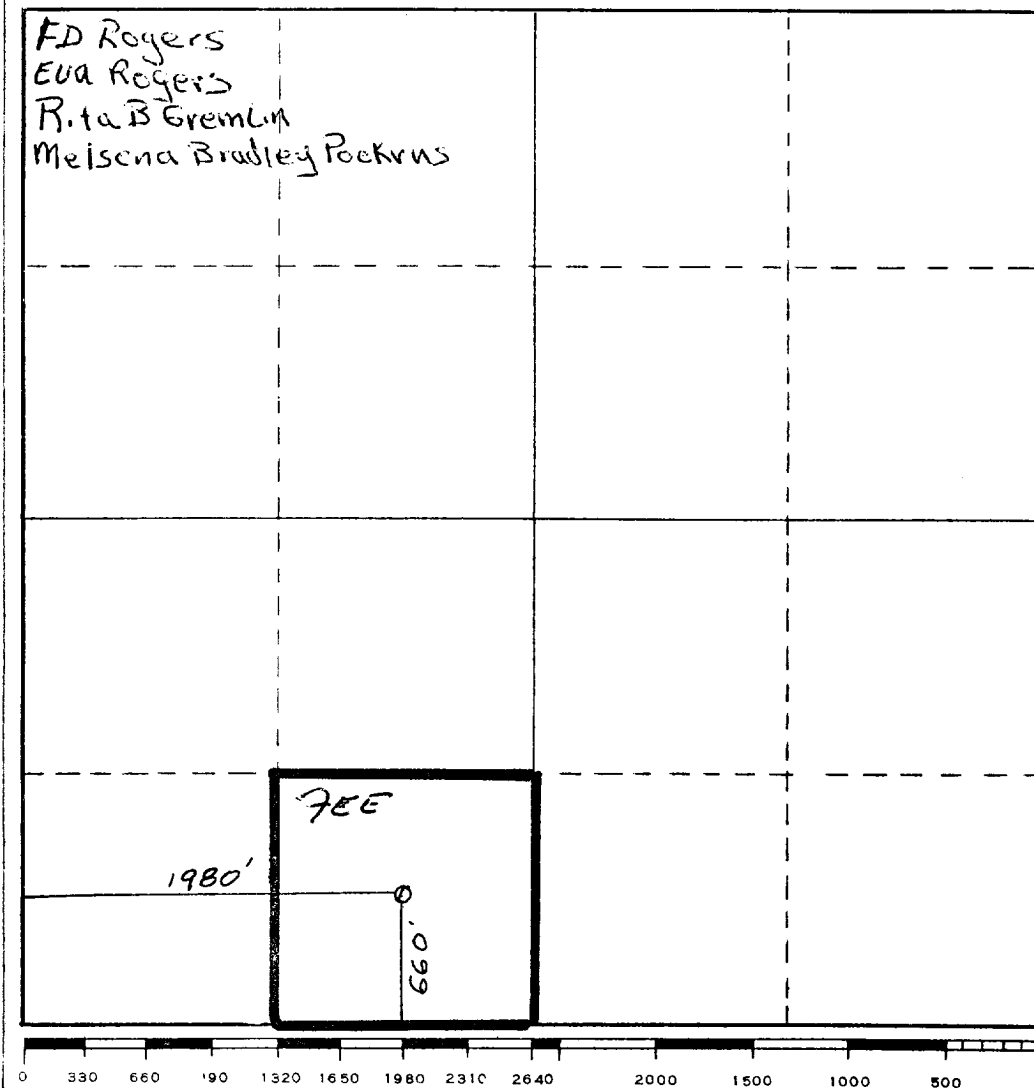
Operator YATES PETROLEUM CORPORATION		Lease Bravo ABO		Well No. 1
Unit Letter N	Section 33	Township 3 South	Range 30 East	County Roosevelt
Actual Footage Location of Well: 660 feet from the South line and 1980 feet from the West line				
Ground Level Elev. 4446.	Producing Formation Granite	Pool Wild Cat Granite	Dedicated Acres 40	

1. Outline the acreage dedicated to the subject well by colored pencil or hachure marks on the plat below.
2. If more than one lease is dedicated to the well, outline each and identify the ownership thereof (both as to working interest and royalty).
3. If more than one lease of different ownership is dedicated to the well, have the interests of all owners been consolidated by communitization, unitization, force-pooling, etc?

☐ Yes ☒ No If answer is "yes," type of consolidation _____

If answer is "no," list the owners and tract descriptions which have actually been consolidated. (Use reverse side of this form if necessary.) _____

No allowable will be assigned to the well until all interests have been consolidated (by communitization, unitization, forced-pooling, or otherwise) or until a non-standard unit, eliminating such interests, has been approved by the Commission.



CERTIFICATION

I hereby certify that the information contained herein is true and complete to the best of my knowledge and belief.

Cy Cowan
Name

Cy Cowan
Position
Regulatory Agent

Company
Yates Petroleum Corporation

Date
February 19, 1985

I hereby certify that the well location shown on this plat was plotted from field notes of actual surveys made by me or under my supervision, and that the same is true and correct to the best of my knowledge and belief.

Date Surveyed
February 7, 1985

Registered Professional Engineer and/or Land Surveyor

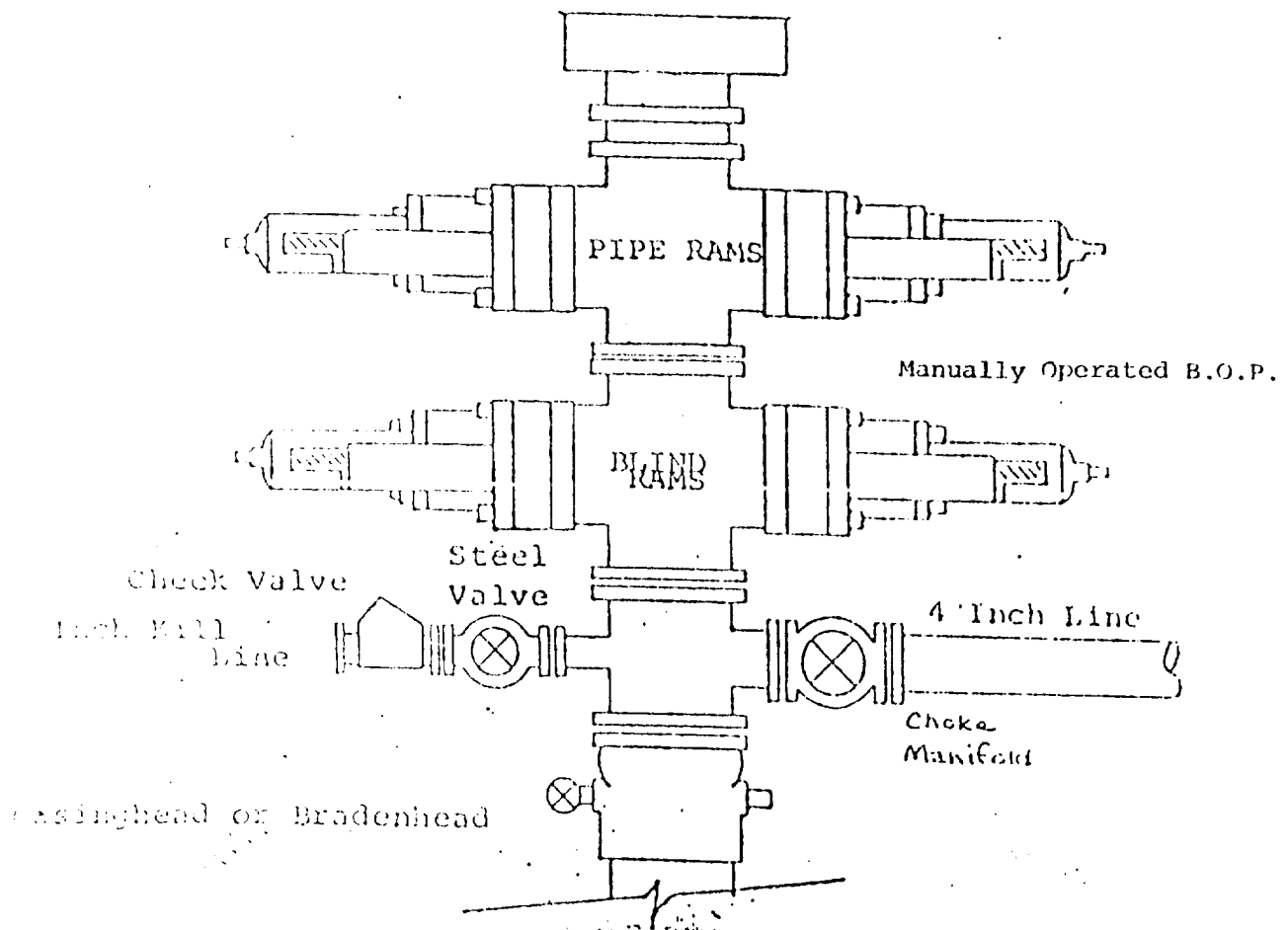
Dan R. Reddy

Certificate No.
NM PE&LS NO. 5412

EXHIBIT B

BOP DIAGRAM

RATED 3000[#]



RECEIVED

FEB 20 1985

O.C.D.
HOBBS OFFICE

4-22-82