

NO. OF COPIES RECEIVED:		
DISTRIBUTION		
SANTA FE		
FILE		
U.S.G.S.		
LAND OFFICE		
OPERATOR		

NEW MEXICO OIL CONSERVATION COMMISSION

Form C-101
Revised 1-1-65

5A. Indicate Type of Lease	
STATE <input type="checkbox"/>	FEE <input checked="" type="checkbox"/>

5. State Oil & Gas Lease No.

APPLICATION FOR PERMIT TO DRILL, DEEPEN, OR PLUG BACK

1a. Type of Work

b. Type of Well

DRILL ☐ DEEPEN ☐ PLUG BACK ☐

OIL WELL ☒ GAS WELL ☐ OTHER RE-ENTRY ☐ SINGLE ZONE ☐ MULTIPLE ZONE ☐

2. Name of Operator

MorOilCo, Inc.

3. Address of Operator

P.O. Drawer I Artesia, NM 88211-0269

4. Location of Well

UNIT LETTER J LOCATED 1980 FEET FROM THE South LINE

AND 1980 FEET FROM THE East LINE OF SEC. 31 TWP. 2S RGE. 33E NMPM

7. Unit Agreement Name

8. Farm or Lease Name

McAlister

9. Well No.

#1-A

10. Field and Pool, or Wildcat

Wildcat

12. County

Roosevelt

21. Elevations (Show whether DF, RT, etc.)

4195.1

21A. Kind & Status Plug, Bond

Blanket

11. Proposed Depth

7500

19A. Formation

Fusselman

20. Rotary or C.T.

Rotary

21B. Drilling Contractor

WEK

22. Approx. Date Work will start

ASAP

23.

PROPOSED CASING AND CEMENT PROGRAM

SIZE OF HOLE	SIZE OF CASING	WEIGHT PER FOOT	SETTING DEPTH	SACKS OF CEMENT	EST. TOP
17	13-3/8"	48#	411'	420 sx	Circulate
12-1/4"	8-5/8"	32# & 24#	3243'	1200 sx	
7-7/8"	5-1/2"	17.0# & 15.5#	7500'	450 sx	

MorOilCo, Inc., proposes to re-enter the McAlister #1-A (formerly the McAlister #1)*. We plan to clean out well to original depth of 7500'. Will run 5-1/2" 17.0# & 15.5# pipe, perforate and treat. If well is not productive, will plug & abandon.

*Former McAlister #1, P & A 7/19/85, old T.D. 7501'.

1. ABOVE SPACE DESCRIBE PROPOSED PROGRAM; IF PROPOSAL IS TO DEEPEN OR PLUG BACK, GIVE DATA ON PRESENT PRODUCTIVE ZONE AND PROPOSED NEW PRODUCTIVE ZONE. GIVE BLOWOUT PREVENTER PROGRAM, IF ANY.

hereby certify that the information above is true and complete to the best of my knowledge and belief.

Signed Frank M. Morgan Title Operator Date 7/15/87

(This space for State Use)

ORIGINAL SIGNED BY JERRY SEXTON
DISTRICT 1 SUPERVISOR

APPROVED BY _____ TITLE _____

DATE JUL 17 1987

CONDITIONS OF APPROVAL, IF ANY:

NEW MEXICO OIL CONSERVATION COMMISSION
WELL LOCATION AND ACREAGE DEDICATION PLAT

Form 1-11
Superseded Edition
Effective 1-1-85

All distances must be from the outer boundaries of the Section

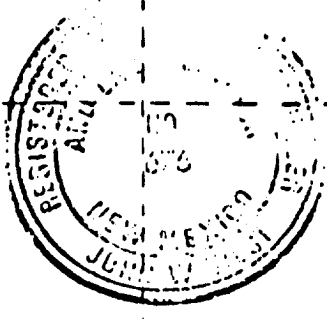

Owner MorOilCo, Inc.		Lease McAlister		Well No. #1-A	
Section J	Section 31	Township 2S	Range 33E	County Roosevelt	
True North Location of Well: 1980 feet from the SOUTH line and 1980 feet from the EAST line					
Land Level Elev. 4195.1	Producing Formation Fusselman		Well Wildcat		Well Depth 40

- 1 Outline the acreage dedicated in the subject well by colored pencil or hatchure marks on the plat below
- 2 If more than one lease is dedicated to the well, outline each and identify the ownership thereof (both as to working interest and royalty).
- 3 If more than one lease of different ownership is dedicated to the well, have the interests of all owners been consolidated by communitization, unitization, force-pooling, etc?

☐ Yes ☐ No If answer is "yes," type of consolidation _____

If answer is "no," list the owners and tract descriptions which have actually been consolidated (Use reverse side of this form if necessary.) _____

No allowable will be assigned to the well until all interests have been consolidated (by communitization, unitization, forced-pooling, or otherwise) or until a non-standard unit, eliminating such interests, has been approved by the Commission.

CERTIFICATION

I hereby certify that the information contained herein is true and complete to the best of my knowledge and belief

Frank S. Morgan
Name

Frank S. Morgan

Position

Vice - President

Company

MorOilCo, Inc.

Date

July 15, 1987

I hereby certify that the well location shown on this plat was plotted from field notes of actual surveys made by me or under my supervision, and that the same is true and correct to the best of my knowledge and belief

Date Surveyed

5/25/85

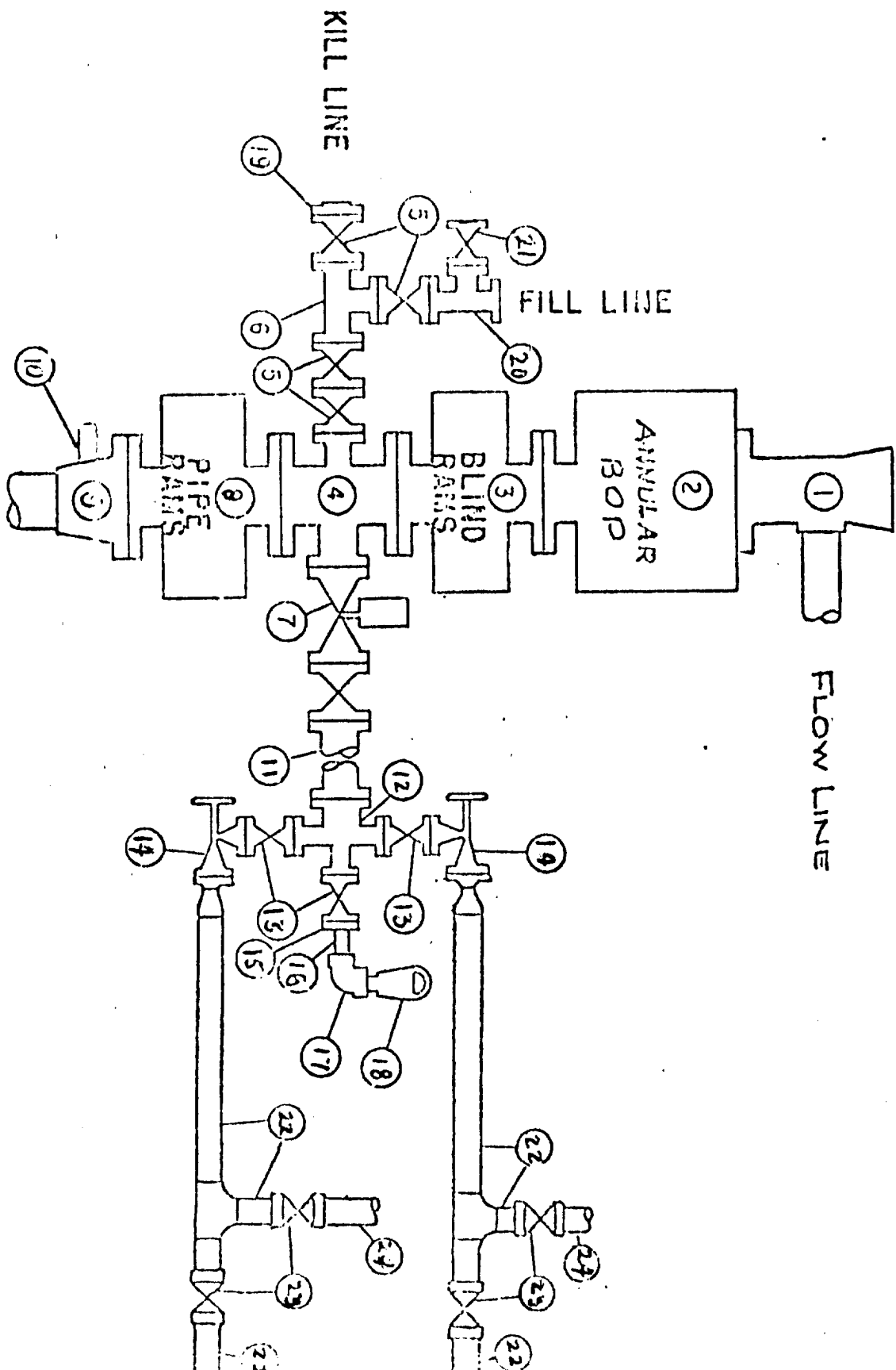
Registered Professional Engineer
and/or Land Surveyor

John W. West

Certificate No. JOHN W. WEST.

676

WEK DRILLING CO., INC. BLOWOUT PREVENTER SPECIFICATION



10/15/74

WEK DRILLING CO., INC.
EQUIPMENT DESCRIPTION

All equipment should be at least 3,000 psi WP or higher unless otherwise specified.

1. Bell nipple.
2. Hydril bag type preventer
3. Ram type pressure operated blowout preventer with blind rams.
4. Flanged spool with one 3-inch and one 2-inch (minimum) outlet.
5. 2-inch (minimum) flanged plug or gate valve.
6. 2-inch by 2-inch by 2-inch (minimum) flanged tee.
7. 3-inch gate valve.
8. Ram type pressure operated blowout preventer with pipe rams.
9. Flanged type casing head with one side outlet.
10. 2-inch threaded (or flanged) plug or gate valve.
Flanged on 5000# WP, threaded on 3000# WP or less.
11. 3-inch flanged spacer spool.
12. 3-inch by 2-inch by 2-inch by 2-inch flanged cross.
13. 2-inch flanged plug or gate valve.
14. 2-inch flanged adjustable choke.
15. 2-inch threaded flange.
16. 2-inch XXH nipple.
17. 2-inch forged steel 90° Ell.
18. Cameron (or equal.) threaded pressure gage.
19. Threaded flange.
20. 2-inch flanged tee.
21. 2-inch flanged plug or gate valve.
22. 2½-inch pipe, 300' to pit, anchored.
23. 2½-inch SE valve.
24. 2½-inch line to steel pit or separator.

NOTES:

1. Items 3, 4 and 8 may be replaced with double ram type preventer with side outlets between the rams.
2. The two valves next to the stack on the fill and kill line to be closed unless drill string is being pulled.
3. Kill line is for emergency use only. This connection shall not be used for filling.
4. Replacement pipe rams and blind rams shall be on location at all times.
5. Only type U, LSW and QRC ram type preventers with secondary seals are acceptable for 5000 psi WP and higher BOP stacks.
6. Type E ram-type BOP's with factory modified side outlets may be used on 3000 psi or lower WP BOP stacks.