

NEW MEXICO OIL CONSERVATION COMMISSION
WELL LOCATION AND ACREAGE DEDICATION PLAT

Form C-102
Supersedes C-128
Effective 1-1-65

All distances must be from the outer boundaries of the Section

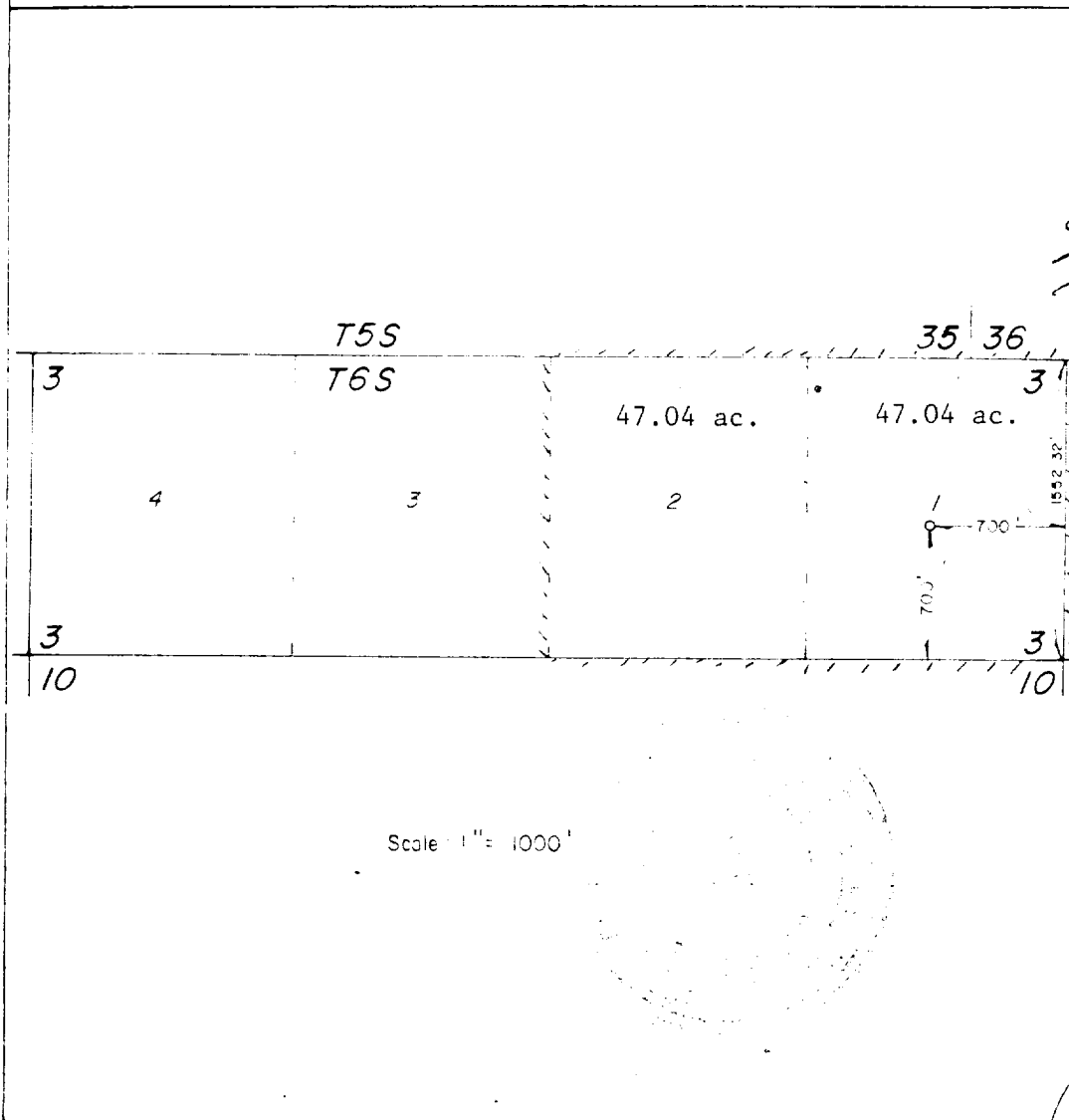
Operator PHILLIPS PETROLEUM CO.		Lease LAMBIRTH "B"		Well No. 2
Unit Letter Lot 1	Section 3	Township 6S	Range 33E	County ROOSEVELT
Actual Footage Location of Well: 700 feet from the SOUTH line and 700 feet from the EAST line				
Ground Level Elev. 4402.6	Producing Formation Fusselman	Pool Peterson South Fusselman	Dedicated Acreage: 94.08 Acres	

1. Outline the acreage dedicated to the subject well by colored pencil or hachure marks on the plat below.
2. If more than one lease is dedicated to the well, outline each and identify the ownership thereof (both as to working interest and royalty).
3. If more than one lease of different ownership is dedicated to the well, have the interests of all owners been consolidated by communitization, unitization, force-pooling, etc?

☐ Yes ☐ No If answer is "yes," type of consolidation _____

If answer is "no," list the owners and tract descriptions which have actually been consolidated. (Use reverse side of this form if necessary.) _____

No allowable will be assigned to the well until all interests have been consolidated (by communitization, unitization, forced-pooling, or otherwise) or until a non-standard unit, eliminating such interests, has been approved by the Commission.



CERTIFICATION	
I hereby certify that the information contained herein is true and complete to the best of my knowledge and belief.	
<i>[Signature]</i>	
W. J. Mueller	
Position Sr. Engineering Specialist	
Company Phillips Petroleum Co.	
Date August 23, 1985	
I hereby certify that the well location shown on this plat was plotted from field notes of actual surveys made by me or under my supervision, and that the same is true and correct to the best of my knowledge and belief.	
Date Surveyed 8/20/85	
Registered Professional Engineer and/or Land Surveyor <i>[Signature]</i>	
Certificate No.	JOHN W. WEST 676
Ronald J. Eidson 3239	

RECEIVED

AUG 26 1985

Q. 100-100-100
HOBBS