

OIL CONSERVATION DIVISION

STATE OF NEW MEXICO
ENERGY AND MINERALS DEPARTMENTP. O. BOX 2080
SANTA FE, NEW MEXICO 87501Form C-102
Revised 10-1-79

All distances must be from the outer boundaries of the Section.

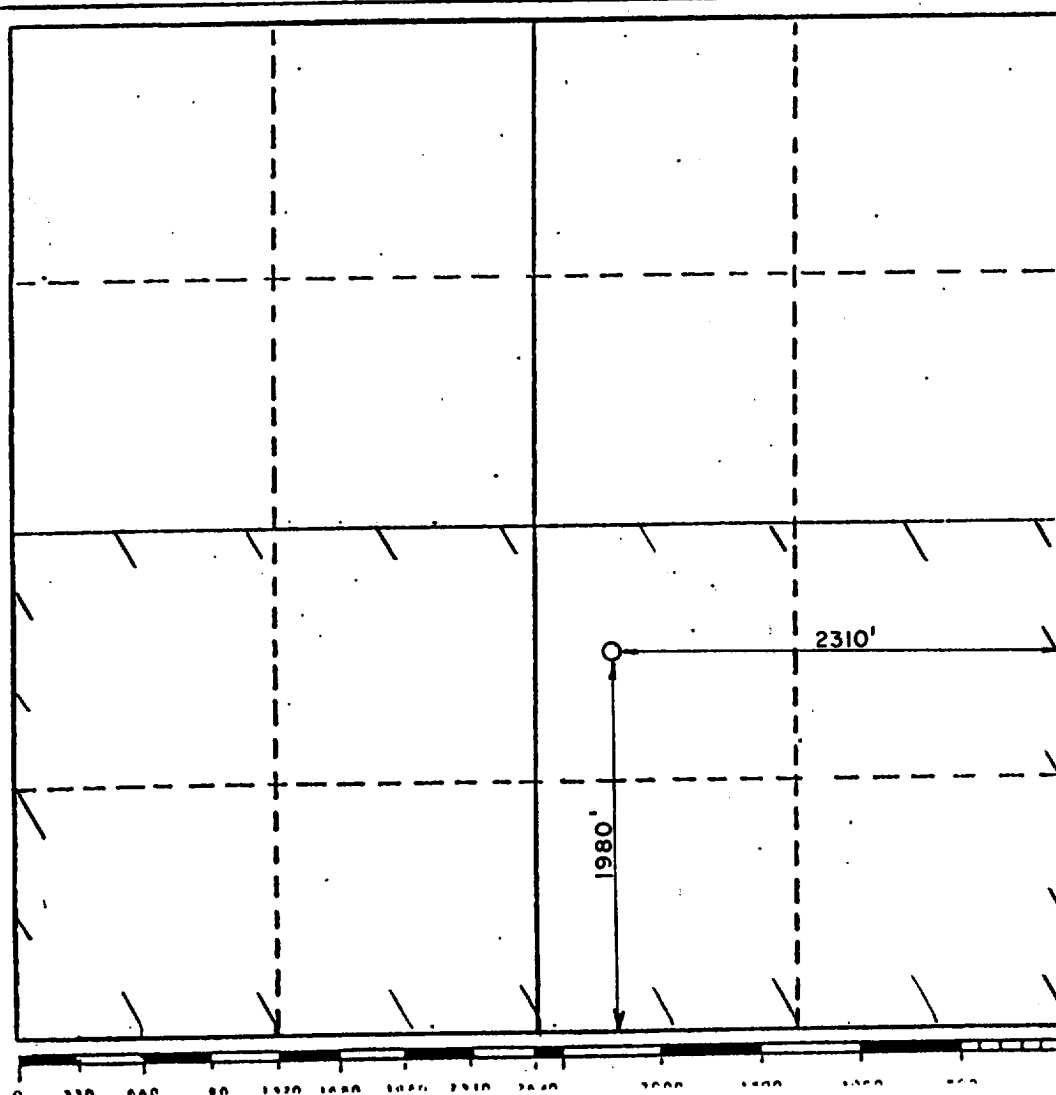
Operator Marshall Pipe & Supply Co.			Lease Wendell Best.		Well No. 1
Unit Letter J	Section 27	Township 2 South	Range 29 East	County Roosevelt	
Actual Footage Location of Well: 1980 feet from the South line and 2310 feet from the East line					
Ground Level Elev. 4363	Producing Formation Montoya		Pool WC	Dedicated Acreage: 320 if gas Acres	

1. Outline the acreage dedicated to the subject well by colored pencil or hatchure marks on the plat below.
2. If more than one lease is dedicated to the well, outline each and identify the ownership thereof (both as to working interest and royalty).
3. If more than one lease of different ownership is dedicated to the well, have the interests of all owners been consolidated by communitization, unitization, force-pooling, etc?

☒ Yes ☐ No If answer is "yes," type of consolidation Force Pool order #R-8074

If answer is "no," list the owners and tract descriptions which have actually been consolidated. (Use reverse side of this form if necessary.) _____

No allowable will be assigned to the well until all interests have been consolidated (by communitization, unitization, forced-pooling, or otherwise) or until a non-standard unit, eliminating such interests, has been approved by the Division.



CERTIFICATION

I hereby certify that the information contained herein is true and complete to the best of my knowledge and belief.

Name

Position

Company

Date

I hereby certify that the well location shown on this plat was plotted from field notes of actual surveys made by me or under my supervision, and that the same is true and correct to the best of my knowledge and belief.

March 18, 1986

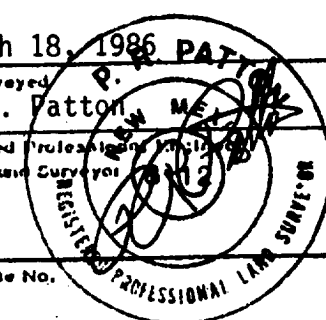
Date Surveyed

P. R. Patton

Registered Professional Engineer and/or Land Surveyor

8112

Certificate No.



RECEIVED
MAR 26 1986
HOBBS Office

RECEIVED
MAR 26 1986
HOBBS Office

48/11/9 3 374
113