

District I
PO Box 1980, Hobbs, NM 88241-1980
District II
PO Drawer DD, Artesia, NM 88211-0719
District III
1000 Rio Brazos Rd., Aztec, NM 87410
District IV
PO Box 2088, Santa Fe, NM 87504-2088

State of New Mexico
Energy, Minerals & Natural Resources Department

OIL CONSERVATION DIVISION
PO Box 2088
Santa Fe, NM 87504-2088

Form C-101

Revised February 10, 1994

Instructions on back

Submit to Appropriate District Office

State Lease - 6 Copies

Fee Lease - 5 Copies

☐ AMENDED REPORT

APPLICATION FOR PERMIT TO DRILL, RE-ENTER, DEEPEN, PLUGBACK, OR ADD A ZONE

¹ Operator Name and Address. BTA Oil Producers 104 S. Pecos Midland, Texas 79701		¹ OGRID Number 003002
⁴ Property Code 19651	⁴ Property Name Peterson, 9419 JV-P	¹ API Number 30-041-20880
		⁴ Well No. 1

⁷ Surface Location

UL or lot no.	Section	Township	Range	Lot Idn	Feet from the	North/South line	Feet from the	East/West line	County
2	7	6S	34E	2	1980	North	660	West	Roosevelt

⁸ Proposed Bottom Hole Location If Different From Surface

UL or lot no.	Section	Township	Range	Lot Idn	Feet from the	North/South line	Feet from the	East/West line	County
⁹ Proposed Pool 1 Peterson, South Penn Assoc					¹⁰ Proposed Pool 2				

¹¹ Work Type Code N	¹² Well Type Code G	¹³ Cable/Rotary Rotary	¹⁴ Lease Type Code P	¹⁵ Ground Level Elevation 4376'
¹⁶ Multiple No	¹⁷ Proposed Depth 7900	¹⁸ Formation Pennsylvanian	¹⁹ Contractor N/A	²⁰ Spud Date 11-1-96 est

²¹ Proposed Casing and Cement Program

Hole Size	Casing Size	Casing weight/foot	Setting Depth	Sacks of Cement	Estimated TOC
17-1/2"	13-3/8"	54.5#	400	450	Surface
11"	8-5/8"	24# & 32#	3100	1000	Surface
7-7/8"	5-1/2"	15.5# & 17#	7900	1500	3000'

²² Describe the proposed program. If this application is to DEEPEN or PLUG BACK give the data on the present productive zone and proposed new productive zone. Describe the blowout prevention program, if any. Use additional sheets if necessary.

Attached BOP diagram & drilling operations summary.

Permit Expires 1 Year From Approval
Date Unless Drilling Underway

²³ I hereby certify that the information given above is true and complete to the best of my knowledge and belief. Signature: <i>Dorothy Moughton</i>		OIL CONSERVATION DIVISION	
Printed name: Dorothy Moughton		Approved by:	
Title: Regulatory Administrator		Title: ORIGINAL SIGNATURE OF DISTRICT OFFICIAL	
Date: 10/11/96		Approval Date: OCT 11 1996	Expiration Date:
Phone: (915) 682-3753		Conditions of Approval: Attached <input type="checkbox"/>	

DISTRICT I
P.O. Box 1980, Hobbs, NM 88241-1980

DISTRICT II
P.O. Drawer DD, Artesia, NM 88211-0719

DISTRICT III
1000 Rio Brazos Rd., Aztec, NM 87410

DISTRICT IV
P.O. BOX 2088, SANTA FE, N.M. 87504-2088

State of New Mexico
Energy, Minerals and Natural Resources Department

Form C-102
Revised February 10, 1994
Submit to Appropriate District Office
State Lease - 4 Copies
Fee Lease - 3 Copies

OIL CONSERVATION DIVISION
P.O. Box 2088

Santa Fe, New Mexico 87504-2088

☐ AMENDED REPORT

WELL LOCATION AND ACREAGE DEDICATION PLAT

API Number 30-041-20880	Pool Code 50260	Pool Name Peterson, South Penn Assoc
Property Code 19651	Property Name 9419 JV-P PETERSON	Well Number 1
OGRID No. 003002	Operator Name BTA OIL PRODUCERS	Elevation 4376'

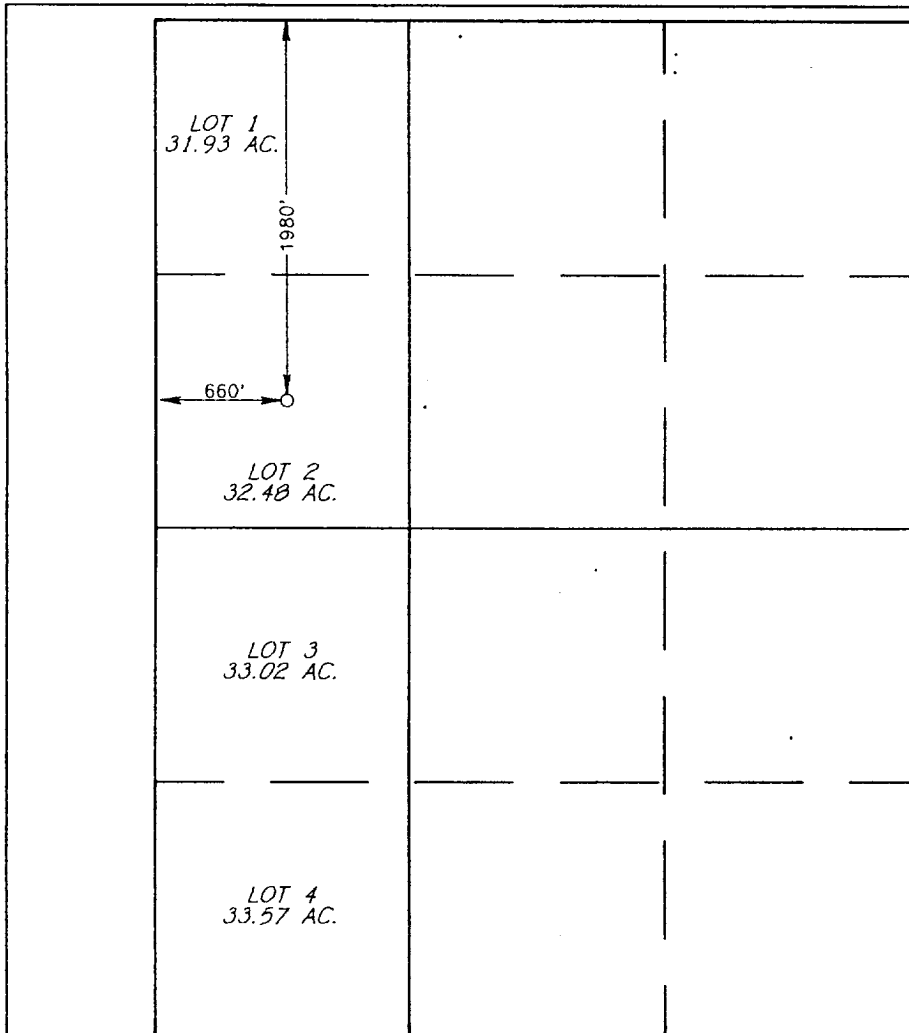
Surface Location

UL or lot No.	Section	Township	Range	Lot Idn	Feet from the	North/South line	Feet from the	East/West line	County
1/2	7	6 S	34 E	2	1980	NORTH	660	WEST	ROOSEVELT

Bottom Hole Location If Different From Surface

UL or lot No.	Section	Township	Range	Lot Idn	Feet from the	North/South line	Feet from the	East/West line	County
Dedicated Acres 291	Joint or Infill N	Consolidation Code C	Order No. Pending						

NO ALLOWABLE WILL BE ASSIGNED TO THIS COMPLETION UNTIL ALL INTERESTS HAVE BEEN CONSOLIDATED
OR A NON-STANDARD UNIT HAS BEEN APPROVED BY THE DIVISION



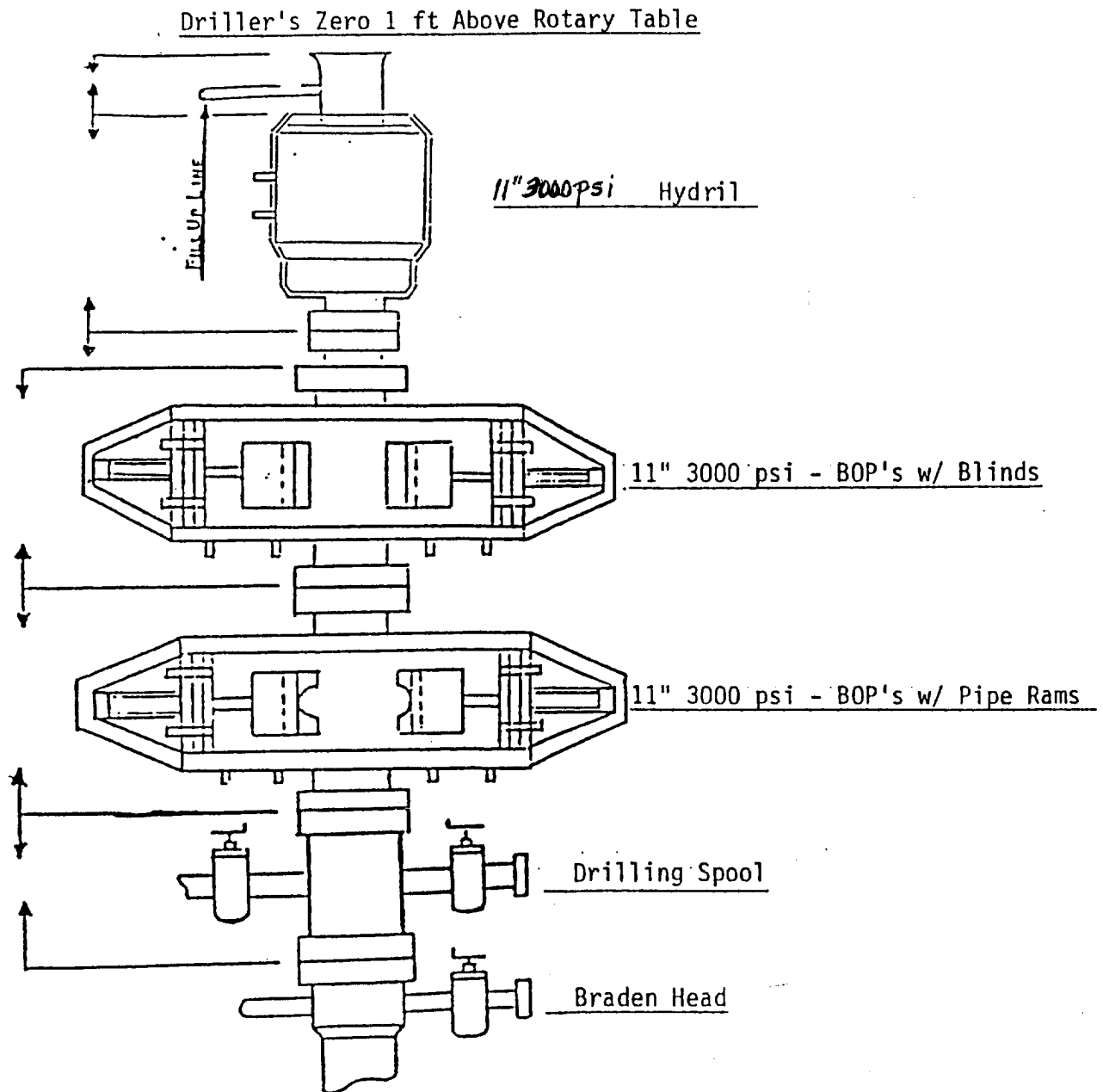
OPERATOR CERTIFICATION	
I hereby certify that the information contained herein is true and complete to the best of my knowledge and belief.	
Signature	
Dorothy Houghton	
Printed Name	
Regulatory Administrator	
Title	
October 11, 1996	
Date	
SURVEYOR CERTIFICATION	
I hereby certify that the well location shown on this plat was plotted from field notes of actual surveys made by me or under my supervision, and that the same is true and correct to the best of my belief.	
OCTOBER 8, 1996	
Date Surveyed	
Signature & Seal of Professional Surveyor	
CDG	
Certificate No. JOHN W. WEST 676	
RONALD J. EIDSON 3239	
PROFESSIONAL SURVEYOR 12641	

**BTA OIL PRODUCERS
9419 JV-P PETERSON #1
SEC 7, T6S, R34E
ROOSEVELT CO, NM**

DRILLING OPERATIONS SUMMARY

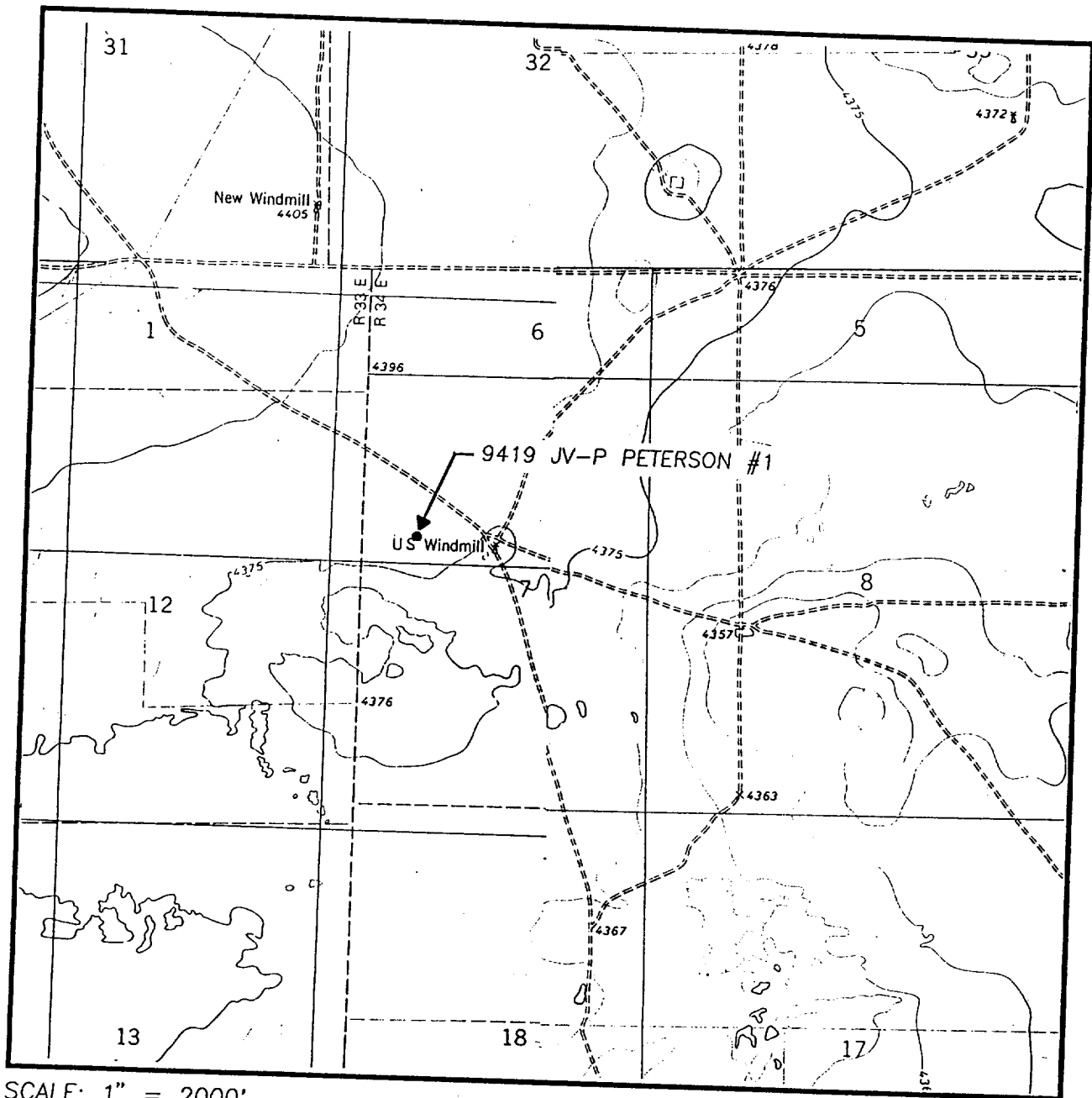
1. Move in rig.
2. Drill 17-1/2" hole to \pm 400'.
3. Run and cement 13-3/8" casing.
 - a. WOC 6 hrs.
 - b. Install casing head & BOP's.
 - c. Clean out to shoe.
 - d. Test BOP's and casing to 1,000 psi.
 - e. WOC 18 hours total, then drill shoe.
4. Drill 11" hole to 3,100'. Run fluid caliper.
5. Run and cement 8-5/8" casing.
 - a. Set slips and cut off 8-5/8" casing.
 - b. Install spool and BOP's.
 - c. Clean out to shoe.
 - d. Test BOP's and casing to 1,500 psi.
 - e. WOC 18 hours total, then drill shoe.
6. Drill 7-7/8" hole. DST zones of interest as directed. When TD is reached, run logs as directed.
7. If well is productive, run and cement 5-1/2" casing.

B T A O I L P R O D U C E R S



BTA OIL PRODUCERS
9419 JV-P PETERSON #1
1980' FNL & 660' FWL
SEC. 7, T-6-S, R-34-E
ROOSEVELT CO., NEW MEXICO
PETERSON SOUTH

LOCATION VERIFICATION MAP



SCALE: 1" = 2000'

CONTOUR INTERVAL:
DORA SW - 5'
ELIDA SE - 5'

SEC. 7 TWP. 6-S RGE. 34-E

SURVEY N.M.P.M.

COUNTY EDDY

DESCRIPTION 1980' FNL & 660' FWL

ELEVATION 4376'

OPERATOR BTA OIL PRODUCERS

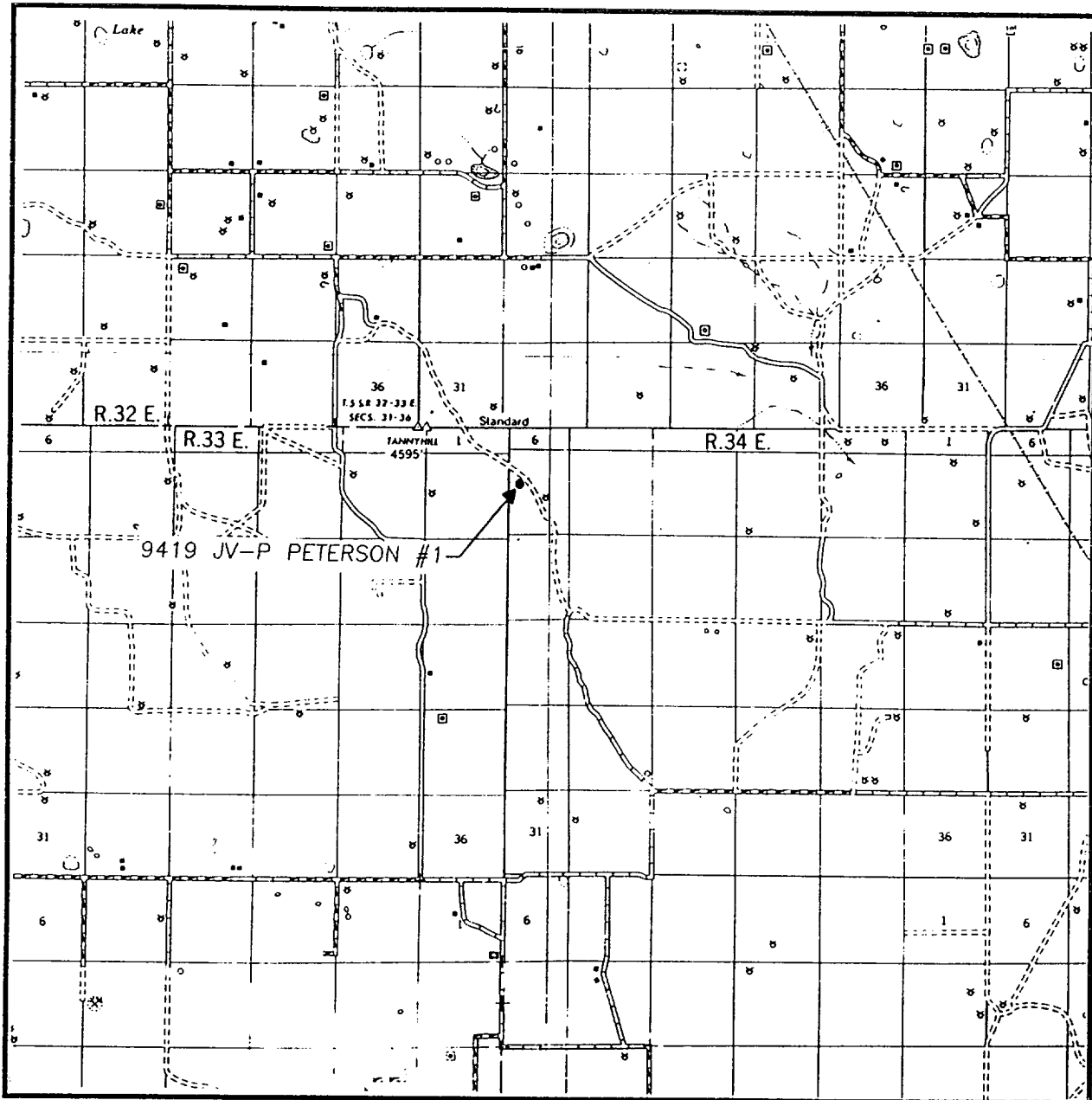
LEASE 9419 JV-P PETERSON

U.S.G.S. TOPOGRAPHIC MAP

DORA SW, ELIDA SE, N.M.

JOHN WEST ENGINEERING
HOBBS, NEW MEXICO
(505) 393-3117

VICINITY MAP



SCALE: 1" = 2 MILES

SEC. 7 TWP. 6-S RGE. 34-E

SURVEY N.M.P.M.

COUNTY EDDY

DESCRIPTION 1980' FNL & 660' FWL

ELEVATION 4376'

OPERATOR BTA OIL PRODUCERS

LEASE 9419 JV-P PETERSON

JOHN WEST ENGINEERING
HOBBS, NEW MEXICO
(505) 393-3117