

NUMBER OF COPIES RECEIVED	
DISTRIBUTION	
SANTA FE	
FILE	
U.S.G.S.	
LAND OFFICE	
TRANSPORTER	OIL
	GAS
PRODUCTION OFFICE	
OPERATOR	

NEW MEXICO OIL CONSERVATION COMMISSION
Santa Fe, New Mexico

Form C-101
Revised (12/1/55)

NOTICE OF INTENTION TO DRILL

Notice must be given to the District Office of the Oil Conservation Commission and approval obtained before drilling or recompletion begins. If changes in the proposed plan are considered advisable a copy of this notice showing such changes will be returned to the sender. Submit this notice in QUINTUPLICATE. One copy will be returned following approval. See additional instructions in Rules and Regulations of the Commission. If State Land submit 6 Copies Attach Form C- 128 in triplicate to first 3 copies of form C-101

Hobbs, New Mexico

September 5, 1962

(Place)

(Date)

OIL CONSERVATION COMMISSION
SANTA FE, NEW MEXICO

Gentlemen:

You are hereby notified that it is our intention to commence the Drilling of a well to be known as

Cactus Drilling Company

(Company or Operator)

Mobil State

(Lease)

Well No. **3**, in **8** (Unit) The well is

located **1980** feet from the **North** line and **1980** feet from the **East** line of Section **16**, T. **16 S**, R. **32 E**, NMPM.

(GIVE LOCATION FROM SECTION LINE) **Undesignated** Pool, **Lea** County

If State Land the Oil and Gas Lease is No. **E. 6485**

If patented land the owner is

Address

We propose to drill well with drilling equipment as follows: **Cable Tools to approx 325' and Rotary to T.D.**

The status of plugging bond is **Filed**

Drilling Contractor **Company Rig**

We intend to complete this well in the **Queen** formation at an approximate depth of **3450** feet.

CASING PROGRAM

We propose to use the following strings of Casing and to cement them as indicated:

Size of Hole	Size of Casing	Weight per Foot	New or Second Hand	Depth	Sacks Cement
11"	8-5/8"	23# T&C	Used	325	150 sack cement
8"	4-1/2"	10.50#	Used	3450	150 sack cement

If changes in the above plans become advisable we will notify you immediately.

ADDITIONAL INFORMATION (If recompletion give full details of proposed plan of work.)

Cement to be circulated behind 8-5/8" casing

Approved _____, 19____
Except as follows:

Sincerely yours,

CACTUS DRILLING COMPANY

(Company or Operator)

By **Geo. W. Baker**

Position **Vice President**

Send Communications regarding well to

Name **Mr. Geo. W. Baker**

Box 1826 Hobbs New Mexico

OIL CONSERVATION COMMISSION

By _____

NEW MEXICO OIL CONSERVATION COMMISSION
WELL LOCATION AND ACREAGE DEDICATION PLAT

FORM C-128
 Revised 5/1/57

SEE INSTRUCTIONS FOR COMPLETING THIS FORM ON THE REVERSE SIDE

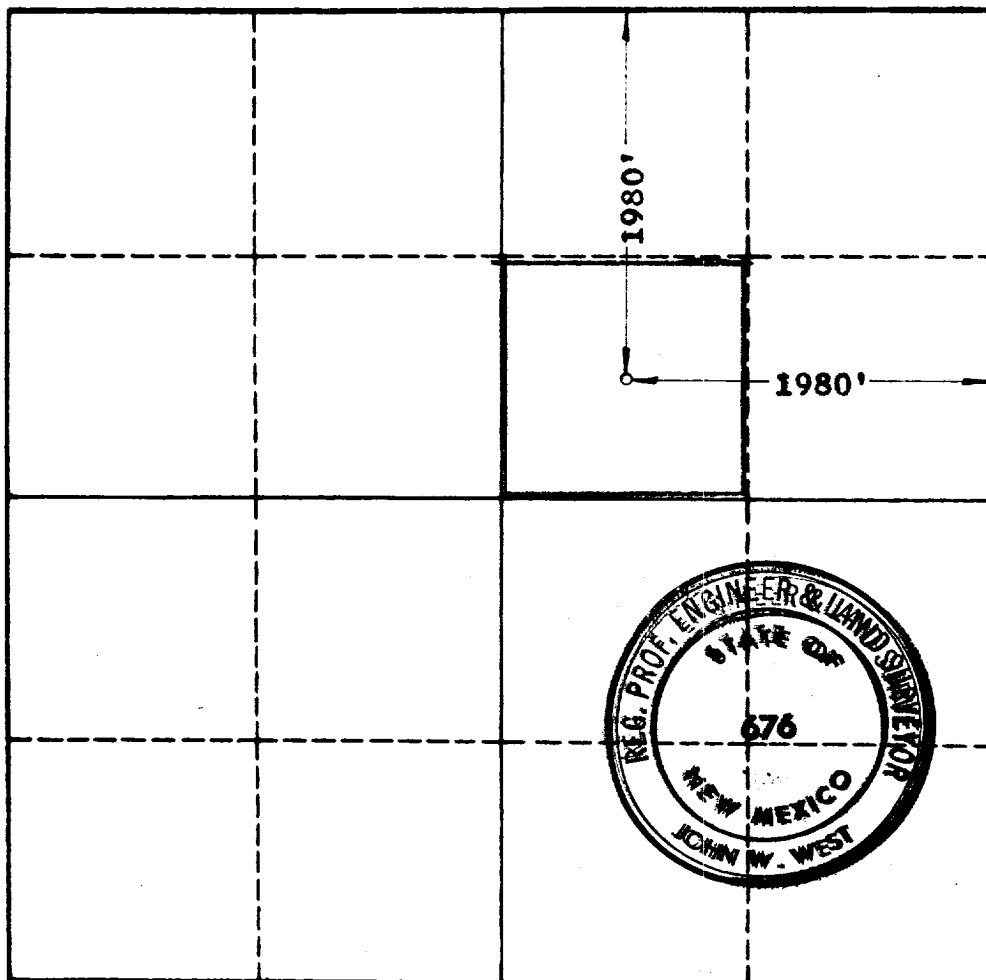
SECTION A

Operator Cactus Drilling Company			Lease Mobil State			Well No. 3		
Unit Letter G	Section 16	Township 16 South	Range 32 East	County Lea				
Actual Footage Location of Well: 1980 feet from the North line and 1980 feet from the East line								
Ground Level Elev.	Producing Formation Queen		Pool Undesignated			Dedicated Acreage: 40 Acres		

1. Is the Operator the only owner in the dedicated acreage outlined on the plat below? YES ☒ NO ☐ . ("Owner" means the person who has the right to drill into and to produce from any pool and to appropriate the production either for himself or for himself and another. (65-3-29 (e) NMSA 1935 Comp.)
2. If the answer to question one is "no," have the interests of all the owners been consolidated by communitization agreement or otherwise? YES ☐ NO ☐ . If answer is "yes," Type of Consolidation _____
3. If the answer to question two is "no," list all the owners and their respective interests below:

Owner	Land Description

SECTION B



CERTIFICATION

I hereby certify that the information in SECTION A above is true and complete to the best of my knowledge and belief.

Name <i>Geo. W. Baker</i>
Position Vice President
Company Cactus Drilling Co
Date Sept. 1, 1962

I hereby certify that the well location shown on the plat in SECTION B was plotted from field notes of actual surveys made by me or under my supervision, and that the same is true and correct to the best of my knowledge and belief.

Date Surveyed 9-5-62
Registered Professional Engineer and/or Land Surveyor, JOHN W. WEST
<i>John W. West</i>
Certificate No. N.M. - P.E. & L.S. NO. 676

0 330 660 990 1320 1650 1980 2310 2640 2000 1500 1000 500