

DISTRICT I
P.O. Box 1980, Hobbs, NM 88241-1930
DISTRICT II
P.O. Box Drawer DD, Artesia, NM 88211-0719
DISTRICT III
1000 Rio Brazos Rd., Aztec, NM 87410
DISTRICT IV
P.O. Box 2088, Santa Fe, NM 87504-2088

State of New Mexico
Energy, Minerals and Natural Resources Department

OIL CONSERVATION DIVISION

P.O. Box 2088
Santa Fe, New Mexico 87504-2088

Form C-101
Revised February 10, 1994
Instructions on back
Submit to Appropriate District Office
State Lease - 6 Copies
Fee Lease - 5 Copies
☐ AMENDED REPORT

APPLICATION FOR PERMIT TO DRILL, RE-ENTER, DEEPEN, PLUGBACK, OR ADD A ZONE

¹ Operator Name and Address TEXACO EXPLORATION & PRODUCTION INC. 205 E. Bender, HOBBS, NM 88240		² OGRID Number 022351
⁴ Property Code 25040	⁵ Property Name EMERALD UNIT	³ API Number 30-025-00402
		⁶ Well No. 1

⁷ Surface Location									
UI or lot no.	Section	Township	Range	Lot.Idn	Feet From The	North/South Line	Feet From The	East/West Line	County
C	23	16S	32E		660	NORTH	1980	WEST	LEA

⁸ Proposed Bottom Hole Location If Different From Surface									
UI or lot no.	Section	Township	Range	Lot.Idn	Feet From The	North/South Line	Feet From The	East/West Line	County
⁹ Proposed Pool 1 Wildcat ANDERSON RANCH QUEEN					¹⁰ Proposed Pool 2				

¹¹ Work Type Code E	¹² WellType Code O	¹³ Rotary or C.T. ROTARY	¹⁴ Lease Type Code S	¹⁵ Ground Level Elevation 4302' DF
¹⁶ Multiple No	¹⁷ Proposed Depth 4207'	¹⁸ Formation QUEEN	¹⁹ Contractor	²⁰ Spud Date 11/15/1999

²¹ Proposed Casing and Cement Program					
SIZE OF HOLE	SIZE OF CASING	WEIGHT PER FOOT	SETTING DEPTH	SACKS OF CEMENT	EST. TOP
No change					

²² Describe the proposed program. If this application is to DEEPEN or PLUG BACK give the data on the present productive zone and proposed new productive zone. Describe the blowout prevention program, if any. Use additional sheets if necessary.

Texaco intends to re-enter this P&A'd well, operated by Petroleum Corporation of Texas. (Texaco acquired this well) The intended procedure is as follows:

1. Mve in backhoe. Instl 4 dead-man anchors. Dig out cellar. Hot-tap csg. Rem dry-hle markr. Instl WH eqpt. Instl BOP. RU PU & rev unit., Drill out surf plug.
2. TIH W/ws, dc's & bit. Drill cmt plugs fr 287-395, 1112-1220, & 3632-3740'. TIH w/CIBP & ws. Set CIBP @ 4242'. Dump 35' cmt on top of CIBP.
3. Run CBL fr PBTD(4204) to surf. Instl lub. Perf 3730-3750'.
4. TIH w/trng pkr & ws. Set pkr @ 3680'. Load backside w/2% KCL wtr. Open perms & stim form w/1000 gals 15% HCL & 20% Methanol.
5. Swab back load. Evaluate productivity. TIH W/prod tbg. Set SN @ 3850'. TIH W/pmp & rd string. Return to prod & place on test.
6. Fracture stimulate if required. Flow well back.
7. Rel pkr & TOH.
8. TIH W/prod tbg. Set SN @ 3850'. TIH W/pmp & rds.
9. Return well to prod & place on test.

Re-Entry

²³ I hereby certify that the rules and regulations of the Oil Conservation Division have been complied with and that the information given above is true and complete to the best of my knowledge and belief.		OIL CONSERVATION DIVISION	
Signature <i>J. Denise Leake</i>		Approved By: <i>[Signature]</i>	
Printed Name J. Denise Leake		Title: <i>[Signature]</i>	
Title Engineering Assistant		Approval Date: <i>10/27/1999</i> Expiration Date:	
Date 10/27/1999	Telephone 397-0405	Conditions of Approval: Attached <input type="checkbox"/>	

DISTRICT I

P.O. Box 1980, Hobbs, NM 88241-1980

DISTRICT II

P.O. Box Drawer DD, Artesia, NM 88211-0719

DISTRICT III

1000 Rio Brazos Rd., Aztec, NM 87410

DISTRICT IV

P.O. Box 2088, Santa Fe, NM 87504-2088

State of New Mexico

Energy, Minerals and Natural Resources Department

Form C-102

Revised February 10, 1994

Instructions on back

Submit to Appropriate District Office

State Lease - 4 Copies

Fee Lease - 3 Copies

☐ AMENDED REPORT

OIL CONSERVATION DIVISION

P.O. Box 2088

Santa Fe, New Mexico 87504-2088

WELL LOCATION AND ACREAGE DEDICATION PLAT

¹ API Number 30-025-00402	² Pool Code 1	³ Pool Name Anderson Ranch Queen
⁴ Property Code 25040	⁵ Property Name EMERALD UNIT	
⁷ OGRID Number 022351	⁸ Operator Name TEXACO EXPLORATION & PRODUCTION INC.	⁶ Well No. 1
		⁹ Elevation 4302' DF

¹⁰ Surface Location

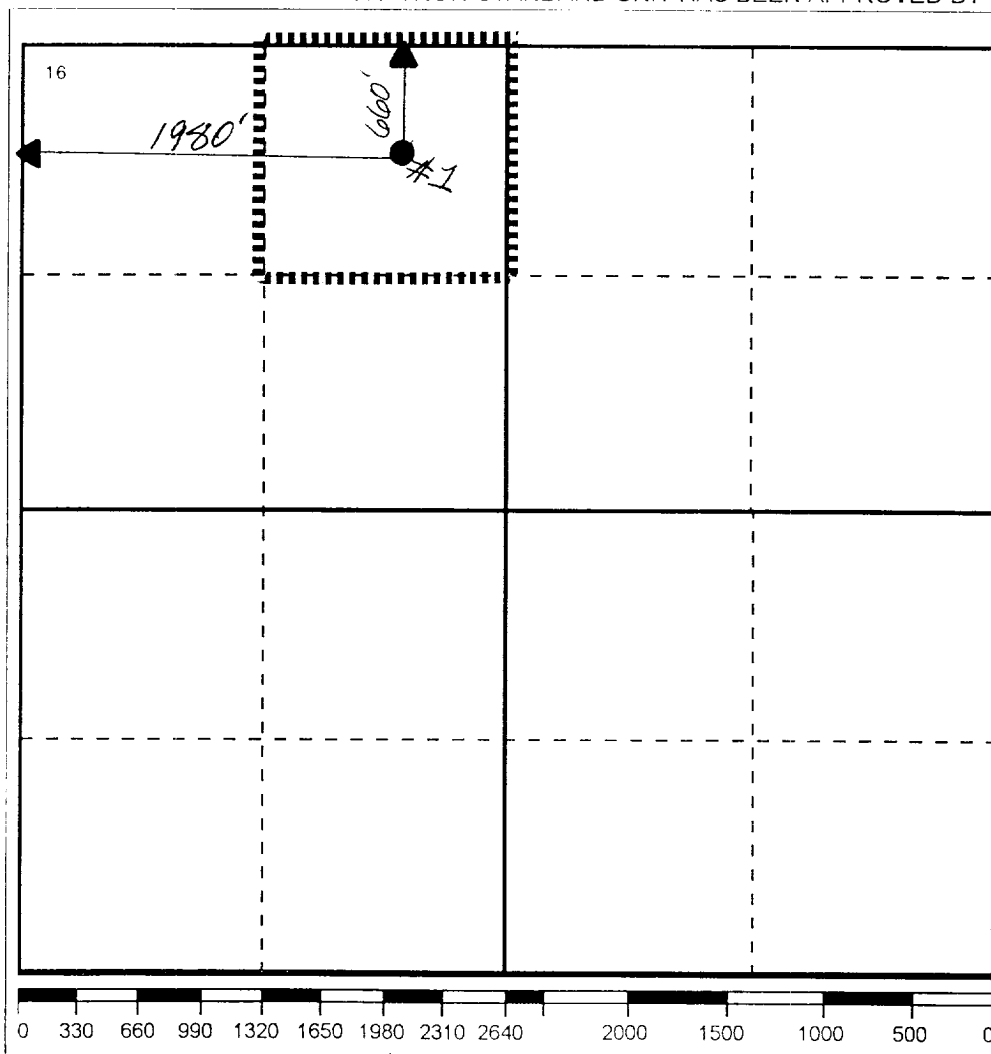
UL or lot no.	Section	Township	Range	Lot Idn	Feet From The	North/South Line	Feet From The	East/West Line	County
C	23	16S	32E		660	NORTH	1980	WEST	LEA

¹¹ Bottom Hole Location If Different From Surface

UL or lot no.	Section	Township	Range	Lot Idn	Feet From The	North/South Line	Feet From The	East/West Line	County

¹² Dedicated Acres 40	¹³ Joint or Infill No	¹⁴ Consolidation Code	¹⁵ Order No.
-------------------------------------	-------------------------------------	----------------------------------	-------------------------

NO ALLOWABLE WILL BE ASSIGNED TO THIS COMPLETION UNTIL ALL INTERESTS HAVE BEEN CONSOLIDATED
OR A NON-STANDARD UNIT HAS BEEN APPROVED BY THE DIVISION



17 OPERATOR CERTIFICATION

I hereby certify that the information contained herein is true and complete to the best of my knowledge and belief

Signature

J. Denise Leake

Printed Name

J. Denise Leake

Position

Engineering Assistant

Date

10/27/1999

18 SURVEYOR CERTIFICATION

I hereby certify that the well location shown on this plat was plotted from field notes of actual surveys made by me or under my supervision, and that the same is true and correct to the best of my knowledge and belief.

Date Surveyed

Signature & Seal of
Professional Surveyor

Certificate No.