

UNITED STATES
DEPARTMENT OF THE INTERIOR
BUREAU OF LAND MANAGEMENT

FORM APPROVED
Budget Status No. 1604-0135
Expires March 31, 1993

SUNDRY NOTICES AND REPORTS ON WELLS

Do not use this form for proposals to drill or to deepen or reentry to a different reservoir.
Use "APPLICATION FOR PERMIT—" for such proposals

3. Lease Designation and Serial No.

LC-058697A

6. If Indian, Alutian or Tribe Name

7. If Unit or CA, Agreement Designation

8. Well Name and No. *Blk 4*
MCA Unit, No. 80

9. API Well No.
30-025-00656

10. Field and Pool, or Exploratory Area
Maljama (G-5A)

11. County or Parish, State

Lea, nm

SUBMIT IN TRIPLICATE

1. Type of Well
 Oil Well Gas Well Other *Injection*

2. Name of Operator
CONOCO INC.

3. Address and Telephone No.
10 DESTA DRIVE, STE 100 W, MIDLAND, TX 79705 (915) 686-5494

4. Location of Well (Footage, Sec., T., R., M., or Survey Description)

660 FSL + 1980 FEL

Unit letter P, Sect 23, T 17S, R 32E

CHECK APPROPRIATE BOX(S) TO INDICATE NATURE OF NOTICE, REPORT, OR OTHER DATA

TYPE OF SUBMISSION

- Notice of Lease
- Subsequent Report
- Final Abandonment Notice

TYPE OF ACTION

- Abandonment
- Recompletion
- Plugging Back
- Casing Repair
- Altering Casing
- Other *Clean out*
- Change of Plans
- New Construction
- Non-Routine Fracturing
- Water Shut-Off
- Conversion to Injection
- Dispose Water

13. Describe Proposed or Completed Operations (Clearly state all pertinent details, and give pertinent data, including estimated date of starting any proposed work. If well is directionally drilled give subsurface locations and measured and true vertical depths for all markers and zones pertinent to this work.)

MIRU. Unseat pkr + POH, stand 1PC Ybg. R1H w/ 2 3/8 x 4 1/2 treating pkr (Arrowset tension + 117 jts of 2 3/8 W.S. Set pkr at 3590. Tst 500#. Pmp 20 BBL to est rate. Pmp 40# X-linked + 40# linear gel at 13 BPM. Start 20# gel + sand at 13 BPM. Screen out in 3# sand stage. Pmpd 159 BBL total + 9200# sand. Avg pres was 4500#. Max press was 5200#. Max pmp rate 13.4 BPM avg 11. ISIP -4915#, 5 min 3880, 10 min 2920, 15 min 2150. POH w/pk. R1H WIDE + tag at 2775. DO bride - R1H + tag at 4162. CO + cure clean to 4200. PU inside cog. Tag at 4130, DE plugged off. POH WIDE. PU 3 7/8 x 4 1/2 bit + scraper + R1H to 3614. POH w/bit + scraper. PU + R1H WIDE + tag at 4130. CO to 4200. POH WIDE. R1H w/2 x 4 1/2 Otis Antelock pkr + 115 jts 2 3/8 1PC Ybg + set pkr at 3572. Tst at 500# + cure pkr fluid. ND BOP. Tst cog + run cog integrity Tst for 30 min - HELD. 4-12-91

As

14. I hereby certify that the foregoing is true and correct

Signed *Christine L. Neff*

Title ADMIN. ASSISTANT

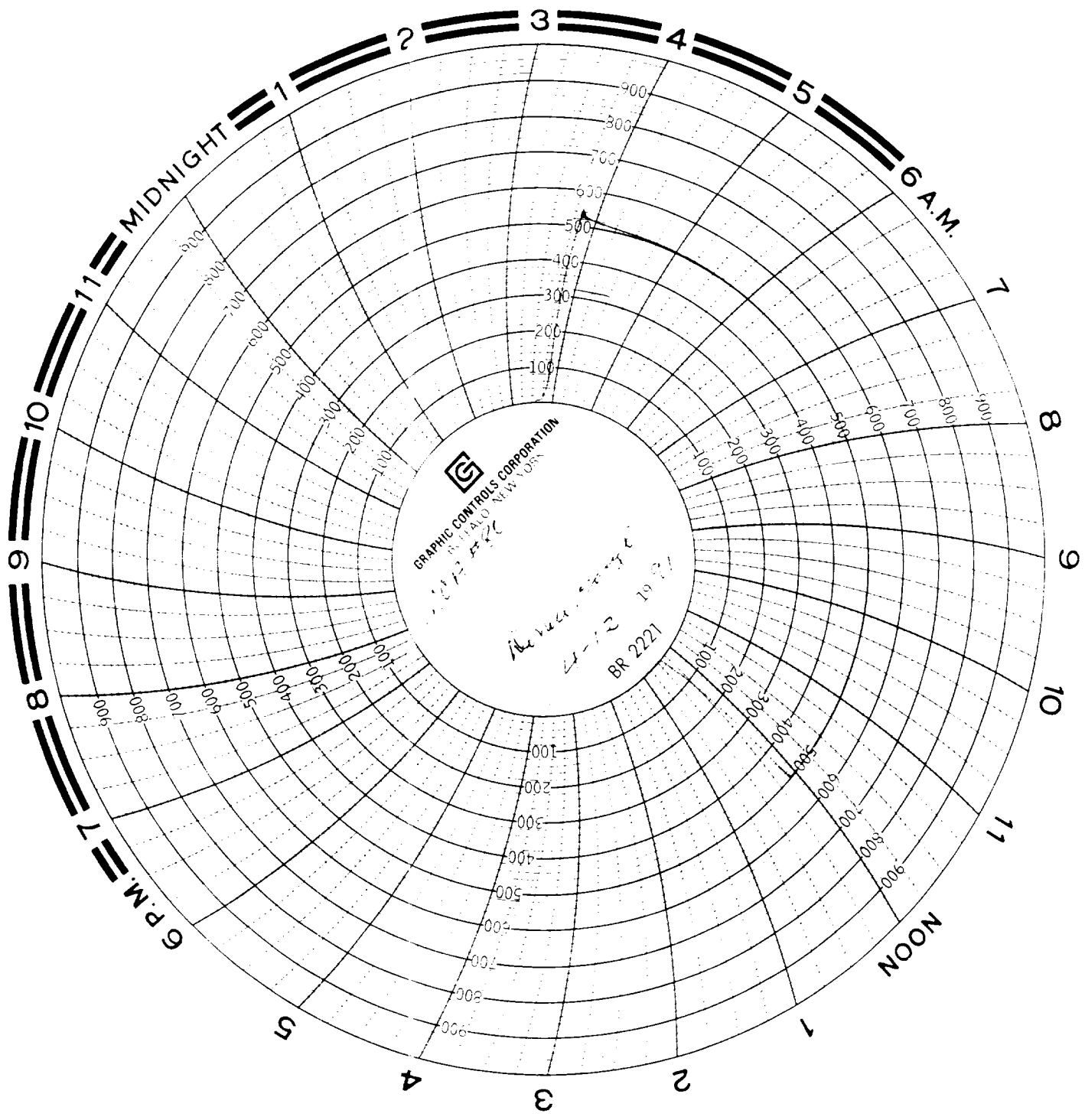
Date 11-1-91

(This space for Federal or State office use)

Approved by _____
Continuation of approval, if any:

Title _____

Date _____



GRAPHIC CONTROLS CORPORATION
BUFFALO, NEW YORK

The Value of Time
4-12-1977
BR 2221

11
MIDNIGHT

6 A.M.

NOON

6 P.M.

5

4

3

2

1

11

10

9

8

7

5

4

3

2

1

900

800

700

600

500

400

300

200

100

900

800

700

600

500

400

300

200

100

900

800

700

600

500

400

300

200

100

900

800

700

600

500

400

300

200

100

900

800

700

600

500

400

300

200

100

900

800

700

600

500

400

300

200

100

900

800

700

600

500

400

300

200

100

900

800

700

600

500

400

300

200

100

900

800

700

600

500

400

300

200

100

900

800

700

600

500

400

300

200

100

900

800

700

600

500

400

300

200

100

900

800

700

600

500

400

300

200

100

900

800

700

600

500

400

300

200

100

900

800

700

600

500

400

300

200

100

900

800

700

600

500

400

300

200

100

900

800

700

600

500

400

300

200

100

900

800

700

600

500

400

300

200

100

900

800

700

600

500

400

300

200

100

900

800

700

600

500

400

300

200

100

900

800

700

600

500

400

300

200

100

900

800

700

600

500

400

300

200

100

900

800

700

600

500

400

300

200

100

900

800

700

600

500

400

300

200

100

900

800

700

600

500

400

300

200

100

900

800

700

600

500

400

300

200

100

900

800

700

600

500

400

300

200

100

900

800

700

600

500

400

300

200

100

900

800

700

600

500

400

300

200

100

900

800

700

600

500

400

300

200

100

900

800

700

600

500

400

300

200

100

900

800

700

600

500

400

300

200

100

900

800

700

600

500

400

300

200

100

900

800

700

600

500

400

CONOCO INC. MCA

Well No. ARAWIT # 80 Date 4-12-91

Packer Depth 3572' T.D. C

Reason For CLEAN OUT WELL AND

The Test DC FRAC JOB.

Witness Alexis Young

REC'D

JAN 16 1992