

NUMBER OF COPIES RECEIVED	
DISTRIBUTION	
SANTA FE	
FILE	
U.S.G.S.	
LAND OFFICE	
TRANSPORTER	OIL GAS
PRODUCTION OFFICE	
OPERATOR	

NEW MEXICO OIL CONSERVATION COMMISSION
Santa Fe, New Mexico

Form G-101
Revised (12/1/55)

NOTICE OF INTENTION TO DRILL

Notice must be given to the District Office of the Oil Conservation Commission and approval obtained before drilling or recompletion begins. If changes in the proposed plan are considered advisable, a copy of this notice showing such changes will be returned to the sender. Submit this notice in QUINTUPLICATE. One copy will be returned following approval. See additional instructions in Rules and Regulations of the Commission. If State Land submit 6 Copies Attach Form G-128 in triplicate to first 3 copies of form G-101

Midland, Texas
(Place)

August 21, 1962
(Date)

OIL CONSERVATION COMMISSION
SANTA FE, NEW MEXICO

Gentlemen:

You are hereby notified that it is our intention to commence the Drilling of a well to be known as

DOB Oil Properties, Inc.
(Company or Operator)

Pure State
(Lease)

Well No. 2, in I (Unit) The well is located 1980 feet from the South line and 660 feet from the East line of Section 15, T. 16S, R. 33E, NMPM. (GIVE LOCATION FROM SECTION LINE) Wildcat Pool, Lea County

If State Land the Oil and Gas Lease is No. OC-1430

If patented land the owner is

Address

We propose to drill well with drilling equipment as follows:

The status of plugging bond is Blanket Bond

Drilling Contractor Tom Brown Drilling Company
Box 5131

Midland, Texas

We intend to complete this well in the Premier formation at an approximate depth of 4450 feet.

CASING PROGRAM

We propose to use the following strings of Casing and to cement them as indicated:

Size of Hole	Size of Casing	Weight per Foot	New or Second Hand	Depth	Sacks Cement
12-1/4	8-5/8	24	New	300	225
7-7/8	4-1/2	11.6	"	4450	200

If changes in the above plans become advisable we will notify you immediately.

ADDITIONAL INFORMATION (If recompletion give full details of proposed plan of work.)

Approved _____, 19____
Except as follows:

CEMENT MUST BE CIRCULATED BEHIND

878 CASING.

OIL CONSERVATION COMMISSION

By

Sincerely yours,

DOB Oil Properties, Inc.
(Company or Operator)

By

Position Agent
Send Communications regarding well to

Name DOB Oil Properties, Inc.

Address Box 953, Midland, Texas

NUMBER OF COPIES RECEIVED	
DISTRIBUTION	
SANTA FE	
FILE	
U.S.G.S.	
LAND OFFICE	
TRANSPORTER	OIL GAS
PRODUCTION OFFICE	
OPERATOR	

NEW MEXICO OIL CONSERVATION COMMISSION
WELL LOCATION AND ACREAGE DEDICATION PLAT
 SEE INSTRUCTIONS FOR COMPLETING THIS FORM ON THE REVERSE SIDE

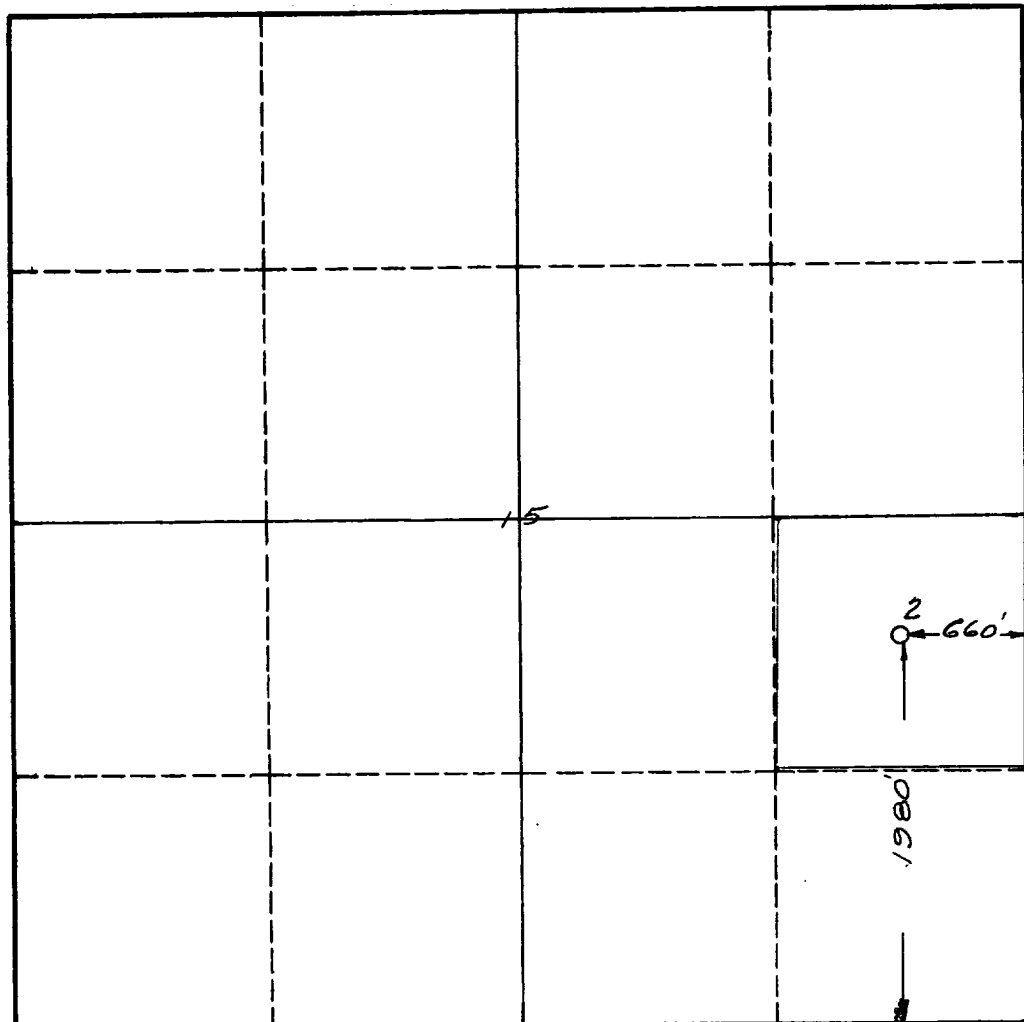
FORM C-128
Revised 5/1/57

SECTION A					
Operator DOB Oil Properties, Inc.			Lease Pure-State		Well No. 2
Unit Letter I	Section 15	Township 16S	Range 33E	County Lea	
Actual Footage Location of Well: 1980 feet from the South line and 660 feet from the East line					
Ground Level Elev.	Producing Formation Premier		Pool Wildcat	Dedicated Acreage: 40 Acres	

1. Is the Operator the only owner in the dedicated acreage outlined on the plat below? YES X NO ____ . ("Owner" means the person who has the right to drill into and to produce from any pool and to appropriate the production either for himself or for himself and another. (65-3-29 (e) NMSA 1935 Comp.)
2. If the answer to question one is "no," have the interests of all the owners been consolidated by communization agreement or otherwise? YES ____ NO ____ . If answer is "yes," Type of Consolidation _____
3. If the answer to question two is "no," list all the owners and their respective interests below:

Owner	Land Description

SECTION B



CERTIFICATION

I hereby certify that the information in SECTION A above is true and complete to the best of my knowledge and belief.

Name <i>Francis Smith</i>
Position Agent
Company DOB Oil Properties, Inc.
Date August 21, 1962

I hereby certify that the well location shown on the plat in SECTION B was plotted from field notes of actual surveys made by me or under my supervision, and that the same is true and correct to the best of my knowledge and belief.

Date Surveyed Aug. 21, 1962
Registered Professional Engineer and/or Land Surveyor <i>Mark E. Shown</i>
Certificate No. 2189

0 330 660 990 1320 1650 1980 2310 2640 2000 1500 1000 500 0

INSTRUCTIONS FOR COMPLETION OF FORM C-128

1. Operator shall furnish and certify to the information called for in Section A.
2. Operator shall outline the dedicated acreage for *both* oil and gas wells on the plat in Section B.
3. A registered professional engineer or land surveyor registered in the State of New Mexico or approved by the Commission shall show on the plat the location of the well and certify this information in the space provided.
4. All distances shown on the plat must be from the outer boundaries of the Section.
5. If additional space is needed for listing owners and their respective interests as required in question 3 of Section A, please use space below.