

STATE OF NEW MEXICO
OIL AND MINERALS DEPARTMENT

OIL CONSERVATION DIVISION

P. O. BOX 2088

SANTA FE, NEW MEXICO 87501

Form C-101
Revised 10-1-78

NO. OF COPIES RECEIVED	
DISTRIBUTION	
SANTA FE	
FILE	
U.S.G.S.	
LAND OFFICE	
OPERATOR	

5A. Indicate Type of Lease
STATE ☒ FEE ☐

5. State Oil & Gas Lease No.
B2516

APPLICATION FOR PERMIT TO DRILL, DEEPEN, OR PLUG BACK

Type of Work

DRILL ☐

DEEPEN ☐

PLUG BACK ☐

Type of Well

OIL WELL ☒ GAS WELL ☐ OTHER re-entry ☐ SINGLE ZONE ☒ MULTIPLE ZONE ☐

Name of Operator

Shell Oil Company

Address of Operator

P.O. Box 991, Houston, TX 77001

Location of Well

UNIT LETTER I LOCATED 3280-1480 FEET FROM THE North LINE

660

FEET FROM THE East LINE OF SEC. 10 TWP. 17S RGE. 33E NMPM

7. Unit Agreement Name

8. Farm or Lease Name

State B

9. Well No.

10. Field and Pool, or Wildcat

Maljamar

12. County

Lea

19. Proposed Depth

4805

19A. Formation

GB/SA

20. Rotary or C.T.

Rotary

1. Elevations (Show whether DF, RT, etc.)

4143 GR

21A. Kind & Status Plug. Bond

Blanket

21B. Drilling Contractor

Pulling Unit

22. Approx. Date Work will start

PROPOSED CASING AND CEMENT PROGRAM

SIZE OF HOLE	SIZE OF CASING	WEIGHT PER FOOT	SETTING DEPTH	SACKS OF CEMENT	EST. TOP
11"	8 5/8	32	1481	350	surface
7"	5 1/2	K55, 14#	4805	500±	surface

BOP 5000 # working psi w/set pipe rams and set of blind rams operation manual

EXT

5/6/80

IN ABOVE SPACE DESCRIBE PROPOSED PROGRAM IF PROPOSAL IS TO DEEPEN OR PLUG BACK, GIVE DATA ON PRESENT PRODUCTIVE ZONE AND PROPOSED NEW PRODUCTION ZONE. GIVE BLOWOUT PREVENTER PROGRAM, IF ANY.

hereby certify that the information above is true and complete to the best of my knowledge and belief.

Signed A. J. Fore Title Senior Engineering Technician Date February 6, 1980

(This space for State Use)

Orig. Signed by
Les Clements

APPROVED BY Oil & Gas Insp. TITLE _____ DATE FEB 12 1980

CONDITIONS OF APPROVAL, IF ANY:

U.S. DEPARTMENT OF THE INTERIOR
BUREAU OF LAND MANAGEMENT

FEB 11 1980

RECEIVED

NEW MEXICO OIL CONSERVATION COMMISSION
WELL LOCATION AND ACREAGE DEDICATION PLAT

Form O-102
Supersedes O-128
Effective 1-1-61

All distances must be from the outer boundaries of the Section

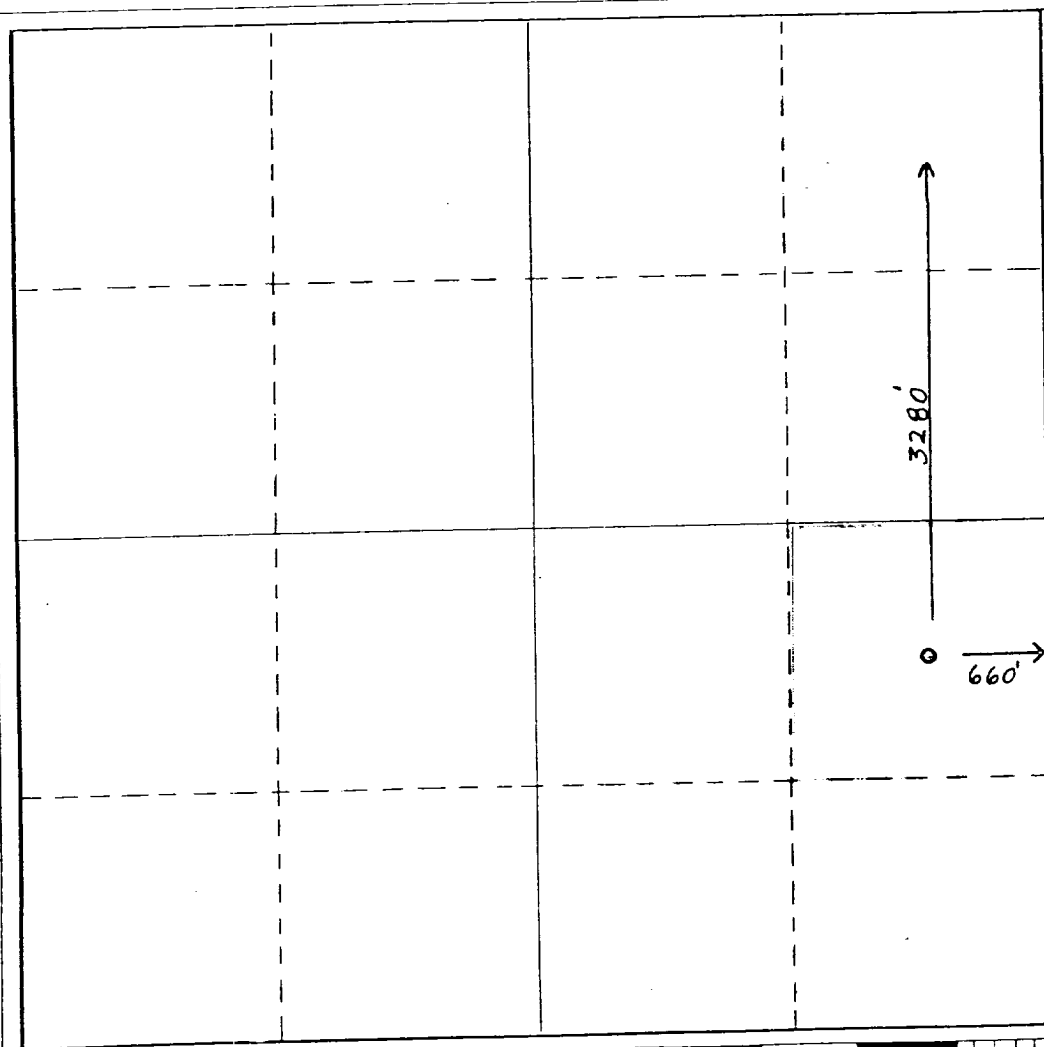
Operator Shell Oil Company			Lease State B		Well No. 1
Tract Letter I	Section 10	Township 17S	Range 33E	County Lea	
Actual Footage Location of Well: 3280 feet from the South line and 660 feet from the east line					
Ground Level Elev. 4143	Producing Formation GB/SA		Pool Maljamar		Dedicated Acreage: 40 Acres

1. Outline the acreage dedicated to the subject well by colored pencil or hachure marks on the plat below.
2. If more than one lease is dedicated to the well, outline each and identify the ownership thereof (both as to working interest and royalty). **NONE**
3. If more than one lease of different ownership is dedicated to the well, have the interests of all owners been consolidated by communitization, unitization, force-pooling, etc?

☐ Yes ☐ No If answer is "yes," type of consolidation _____

If answer is "no," list the owners and tract descriptions which have actually been consolidated. (Use reverse side of this form if necessary.) _____

No allowable will be assigned to the well until all interests have been consolidated (by communitization, unitization, forced-pooling, or otherwise) or until a non-standard unit, eliminating such interests, has been approved by the Commission.



CERTIFICATION

I hereby certify that the information contained herein is true and complete to the best of my knowledge and belief.

Name **A. J. Fore**

Position **Senior Engineering Tech.**

Company **Shell Oil Company**

Date **February 6, 1980**

I hereby certify that the well location shown on this plat was plotted from field notes of actual surveys made by me or under my supervision, and that the same is true and correct to the best of my knowledge and belief.

AMENDED

Date Surveyed

Registered Professional Engineer and/or Land Surveyor

Certificate No.

