

District I  
PO Box 1980, Hobbs, NM 88241-1980  
District II  
PO Drawer DD, Artesia, NM 88211-0719  
District III  
1000 Rio Brazos Rd., Aztec, NM 87410  
District IV  
PO Box 2088, Santa Fe, NM 87504-2088

State of New Mexico  
Energy, Minerals & Natural Resources Department

OIL CONSERVATION DIVISION  
PO Box 2088  
Santa Fe, NM 87504-2088

Form C-101  
Revised February 10, 1994  
Instructions on back  
Submit to Appropriate District Office  
State Lease - 6 Copies  
Fee Lease - 5 Copies

☐ AMENDED REPORT

APPLICATION FOR PERMIT TO DRILL, RE-ENTER, DEEPEN, PLUGBACK, OR ADD A ZONE

<sup>1</sup> Operator Name and Address. THE WISER OIL COMPANY 207 W. MCKAY CARLSBAD, NM 88220		<sup>2</sup> OGRID Number 022922
<sup>4</sup> Property Code 14578	<sup>3</sup> Property Name Caprock Maljamar Unit	<sup>5</sup> API Number 30-025-01458
		<sup>6</sup> Well No. 28

<sup>7</sup> Surface Location

UL or lot no.	Section	Township	Range	Lot Idn	Feet from the	North/South line	Feet from the	East/West line	County
P	18	17S	33E		660	South	660	East	Lea

<sup>8</sup> Proposed Bottom Hole Location If Different From Surface

UL or lot no.	Section	Township	Range	Lot Idn	Feet from the	North/South line	Feet from the	East/West line	County

<sup>9</sup> Proposed Pool 1 Maljamar Grayburg San Andres 43329	<sup>10</sup> Proposed Pool 2
--	-------------------------------

<sup>11</sup> Work Type Code E	<sup>12</sup> Well Type Code I	<sup>13</sup> Cable/Rotary Rotary	<sup>14</sup> Lease Type Code S	<sup>15</sup> Ground Level Elevation 4205 GR
<sup>16</sup> Multiple No	<sup>17</sup> Proposed Depth 5500'	<sup>18</sup> Formation Grayburg & SA	<sup>19</sup> Contractor Reverse Unit	<sup>20</sup> Spud Date 09/01/95

<sup>21</sup> Proposed Casing and Cement Program

Hole Size	Casing Size	Casing weight/foot	Setting Depth	Sacks of Cement	Estimated TOC
Existing 12 1/4	8 5/8	24#	325	250	
Existing 7 7/8	5 1/2	15 1/2#	4628	150	3105
4 3/4	4	11.34#	5500	Sufficient to circ to surface	

<sup>22</sup> Describe the proposed program. If this application is to DEEPEN or PLUG BACK give the data on the present productive zone and proposed new productive zone. Describe the blowout prevention program, if any. Use additional sheets if necessary.

Re-enter well P & A'd in 1984. Clean out & deepen to 5500'. Log. Set 4" OD FJ casing liner w/sufficient cement to circulate to surface. Perforate Grayburg and San Andres field pays. Stimulate as necessary. Complete as water injection well on CMU #'s 150, 151, 163 & 164 patterns.

Blow Out Prevention: See Attached. WFX-670 (State 18 "B" #4)

<sup>23</sup> I hereby certify that the information given above is true and complete to the best of my knowledge and belief.

Signature: *Melanie J. Parker*  
Printed name: Melanie J. Parker

Title: Agent

Date: 07/24/95

Phone: 885-5433

OIL CONSERVATION DIVISION

Approved by: ORIGINAL SIGNATURE OF JERRY SEXTON

Title: DISTRICT SUPERVISOR

Approval Date: JUL 26 1995

Expiration Date: \_\_\_\_\_

Conditions of Approval:  
Attached ☐

Permit Expires 6 Months From Approval  
Date Unless Drilling Underway.  
Re-entry

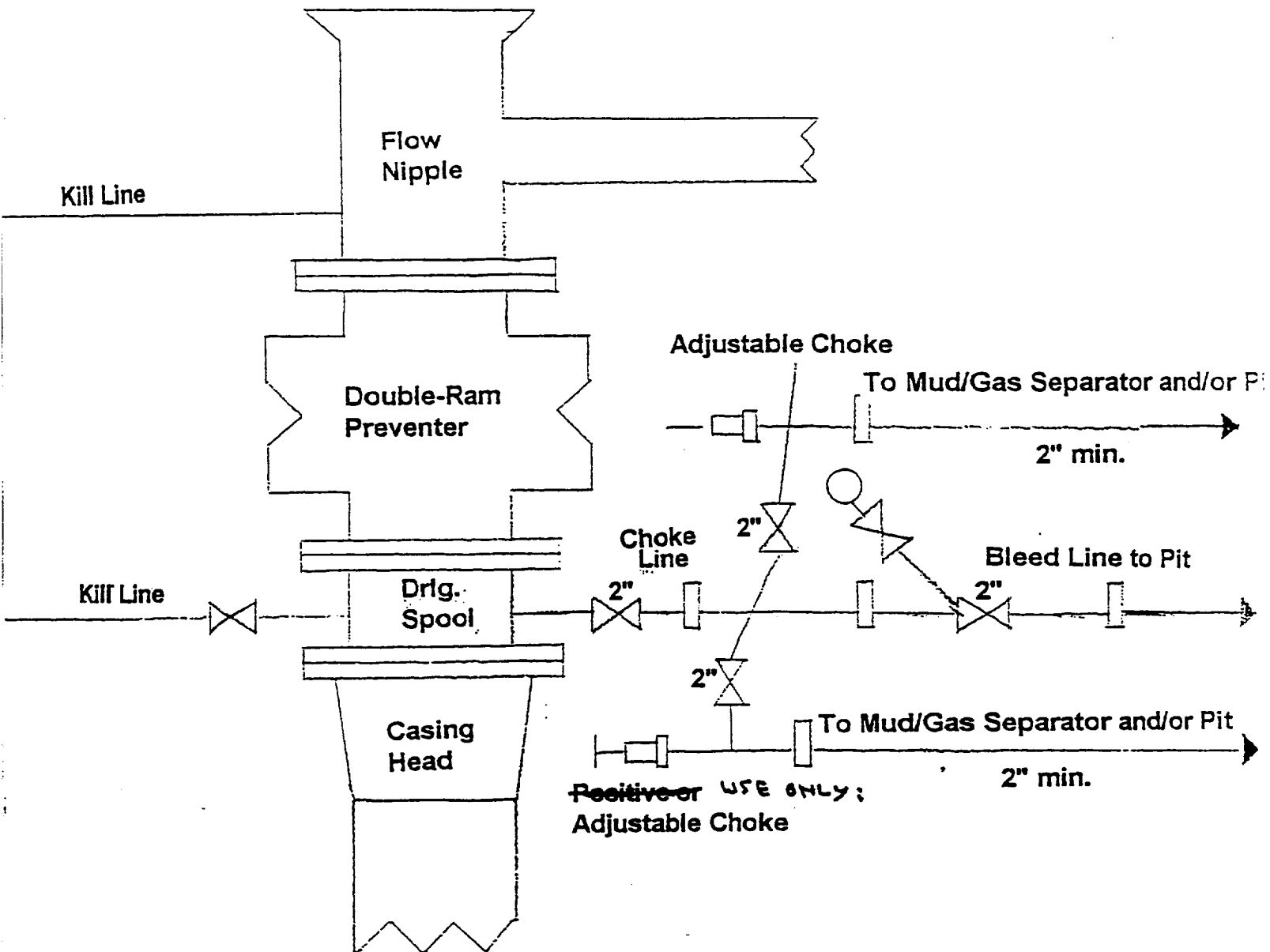
**RECEIVED**

JUL 2 5 1944

O C D HOBBS  
OFFICE

# BOP & CHOKE MANIFOLD

12"/900 Cameron SS Space Saver  
3000# Working Pressure  
3000# Working Pressure Choke Manifold



**RECEIVED**

JUL 25 1945

JOE D. HOBBS  
OFFICE

NEW MEXICO OIL CONSERVATION COMMISSION  
Well Location and Acreage Dedication Plat

Section A.

Date November 15, 1957

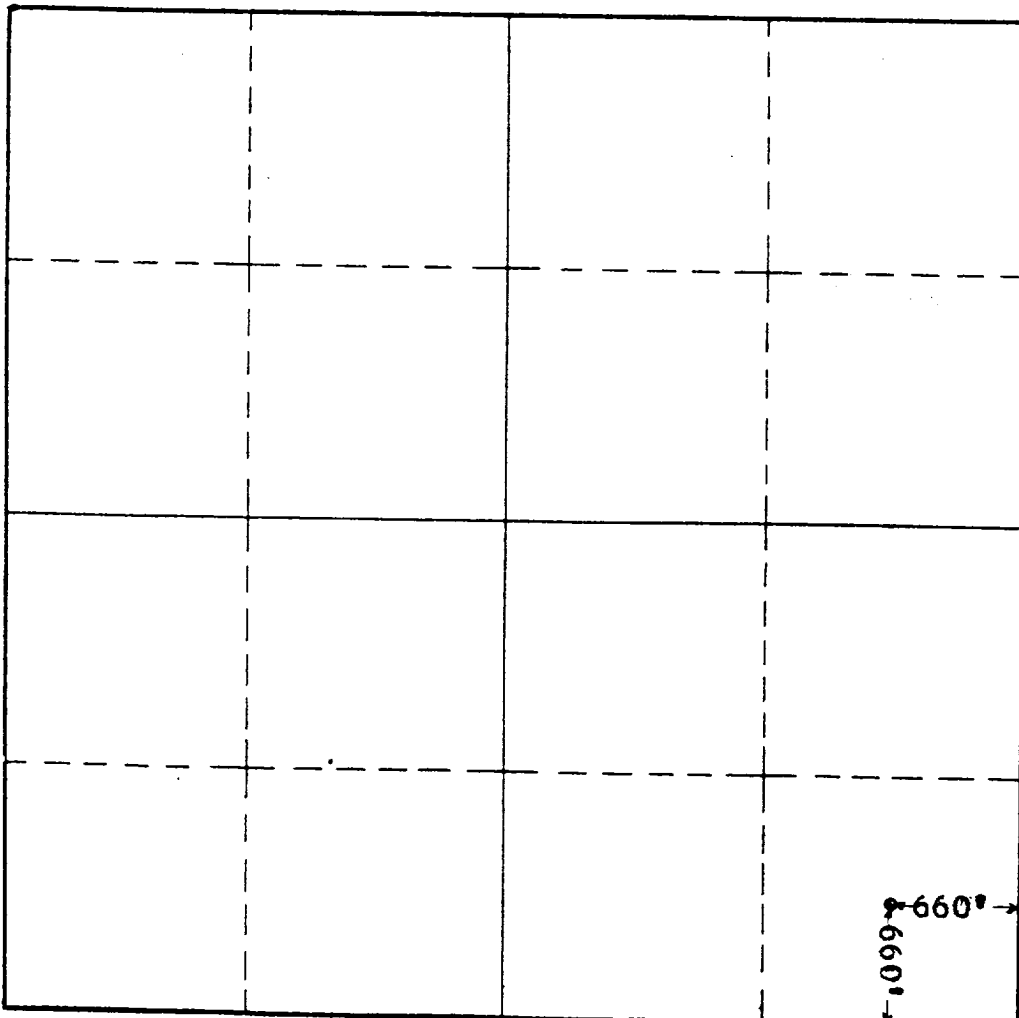
Operator Murphy H. Baxter Lease State "18-B"  
Well No. 4 Unit Letter P Section 18 Township 17 S Range 33 E NMFM  
Located 660 Feet From the East Line, 660 Feet From the South Line  
County Lea G. L. Elevation 4205.23 Dedicated Acreage 40 Acres  
Name of Producing Formation Grayburg Pool Maljamar

1. Is the Operator the only owner\* in the dedicated acreage outlined on the plat below?  
Yes x No       .
2. If the answer to question one is "no," have the interests of all the owners been consolidated by communitization agreement or otherwise? Yes        No       . If answer is "yes," Type of Consolidation
3. If the answer to question two is "no," list all the owners and their respective interests below:

Owner

Land Description

Section B



This is to certify that the information in Section A above is true and complete to the best of my knowledge and belief.

MURPHY H. BAXTER

(Operator)

John S. McMillan  
(Representative)

507 Midland Nat'l Bank Bldg.,  
Address Midland, Texas

This is to certify that the well location shown on the plat in Section B was plotted from field notes of actual surveys made by me or under my supervision and that the same is true and correct to the best of my knowledge and belief.

Date Surveyed 11-15-57

John W. West  
Registered Professional  
Engineer and/or Land Surveyor.

Certificate No. 676

**RECEIVED**

JUL 25 1995

JOHN HOBBS  
OFFICE