

NEW MEXICO OIL CONSERVATION COMMISSION
Santa Fe, New Mexico

NOTICE OF INTENTION TO DRILL OR RECOMPLETE

Notice must be given to the District Office of the Oil Conservation Commission and approval obtained before drilling or recompletion begins. If changes in the proposed plan are considered advisable, a copy of this notice showing such changes will be returned to the sender. Submit this notice in QUINTUPPLICATE. One copy will be returned following approval. See additional instructions in Rules and Regulations of the Commission. If State Land submit 6 Copies

300 San Jacinto Building, Houston 2, Texas

December 7, 1956

(Place)

(Date)

OIL CONSERVATION COMMISSION
SANTA FE, NEW MEXICO

Gentlemen:

You are hereby notified that it is our intention to commence the (Drilling) (Recompletion) of a well to be known as

Austral Oil Exploration Company Incorporated

(Company or Operator)

State "B"

(Lease)

Well No. 3, in I The well is

(Unit)

located 4290 feet from the South line and 160 feet from the East

line of Section 1, T. 16 South, R. 35 East, NMPM.

(GIVE LOCATION FROM SECTION LINE) Undersaturated Pool, Lea County

If State Land the Oil and Gas Lease is No. 2-9116

If patented land the owner is

Address

We propose to drill well with drilling equipment as follows: Rotary Power Rig to total depth of approximately 11,250'

The status of plugging bond is \$10,000 in effect. Fidelity and Deposit Company of Maryland, Policy No. 532812

Drilling Contractor Cactus Drilling Company

We intend to complete this well in the Wolfcamp formation at an approximate depth of 10,750 feet.

CASING PROGRAM

We propose to use the following strings of Casing and to cement them as indicated:

Size of Hole	Size of Casing	Weight per Foot	New or Second Hand	Depth	Sacks Cement
18"	13 3/8"	48#	New	400	300
12 1/4"	8 5/8"	30#	New	4700	1000
8 3/4"	5 1/2" (liner)	17# & 20#	New	4900' to 10,700	300

If changes in the above plans become advisable we will notify you immediately.

ADDITIONAL INFORMATION (If recompletion give full details of proposed plan of work.)

We intend to complete the well in the Wolfcamp formation; however, we intend to drill the well to 11,250' to explore formations deeper than the Wolfcamp.

Approved: DEC 31 1956, 19

Except as follows:

OIL CONSERVATION COMMISSION

By E. J. Fischer

Sincerely yours,

AUSTRAL OIL EXPLORATION COMPANY INCORPORATED

(Company or Operator)

By Winston G. Smith

Position Division Engineer

Send Communications regarding well to

Name Winston G. Smith

Address 300 San Jacinto Bldg., Houston, Texas

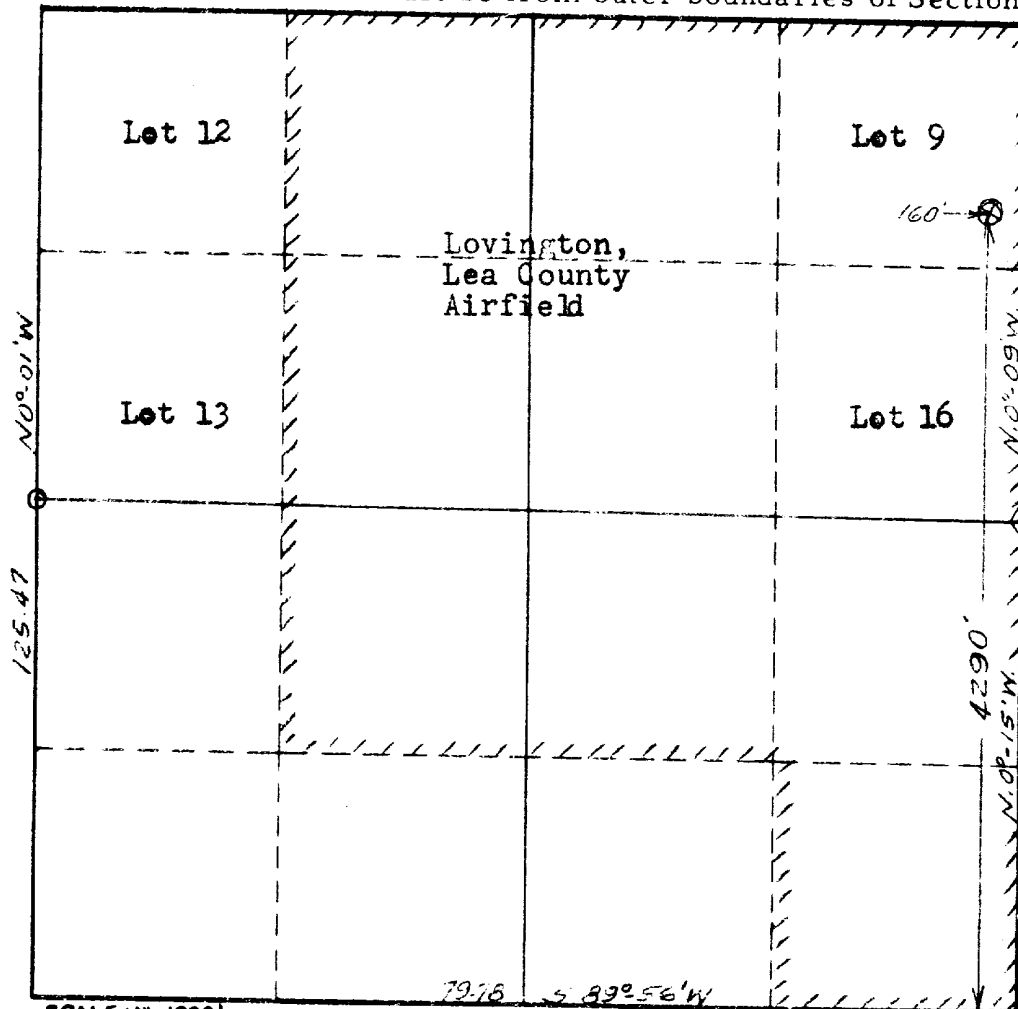
NEW MEXICO
OIL CONSERVATION COMMISSION

Form C-128

Well Location and/or Gas Proration Plat

Operator Austral Oil Exploration Company Inc. Date November 23, 1956
Lease State of New Mexico "B"
Well No. 3 Section 1 Township 16 South Range 35 East NMPM
Located 4290 Feet From South Line, 160 Feet From East Line,
Lea County, New Mexico. G. L. Elevation 3964.3
Name of Producing Formation _____ Pool _____ Dedicated Acreage _____

(Note: All distances must be from outer boundaries of Section)



LEGEND:

- ⊗ - Staked Well Location
- - Std. GLO BC Corner
- ◇ - Std. GLO Rock Corner

SCALE: 1"=1000'

1. Is this Well a Dual Comp.? Yes ___ No ___
2. If the answer to Question 1 is yes, are there any other dually completed wells within the dedicated acreage? Yes ___ No ___

This is to certify that the above plat was prepared from field notes of actual surveys made by me or under my supervision and that the same are true and correct to the best of my knowledge and belief.

Name _____
Position _____
Representing _____
Address _____

Date Surveyed November 23, 1956
John W. McNamee
Registered Professional Engineer and/or
Land Surveyor License No. 1559

