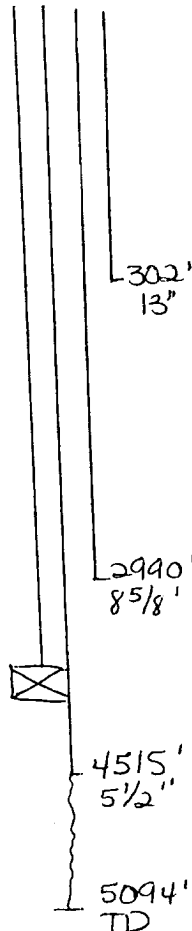


INJECTION WELL DATA SHEET

Greenhill Petroleum Corporation		Lovington San Andres		
OPERATOR		LEASE		
#25	1980' FEL & 660' FSL	36	16S	36E
WELL NO.	FOOTAGE LOCATION	SEC.	TOWNSHIP	RANGE

Tubular Data

Completed
10-18-39



Surface Casing

Size: 13 " Cemented with 200 SX

TOC: Surface feet determined by circ

Hole size: 17-1/4"

Intermediate Casing

Size: 8-5/8 " Cemented with 400 SX

TOC: 1765 feet determined by calc

Hole Size: 11"

Long String

Size: 5-1/2 " Cemented with 200 SX

TOC: 3424 feet determined by calc

Hole Size: 7-7/8"

Total Depth: 5094'

Injection Interval

4515 feet to 5090 feet
(perforated or open-hole, indicate which)

Tubing size 2- /8 lined with IPC set in a
(material)
waterflood tension packer at 4495 feet.
(brand & model)
(or describe any other casing-tubing seal).

Other Data

- Name of the injection formation San Andres
- Name of Field or Pool (If applicable) Lovington San Andres
- Is this a new well drilled for injection? No
If no, for what purpose was the well originally drilled? Production
- Has the well ever be perforated in any other zone(s)? List all such perforated intervals and give plugging detail (sacks of cement or bridge plug(s) used).
No
- Give the depth to and name of any overlying and/or underlying oil or gas zones (pools) in this area.
Underlying-Grayburg