

STATE OF NEW MEXICO
ENERGY AND MINERALS DEPARTMENT

OIL CONSERVATION DIVISION

P. O. BOX 2088
SANTA FE, NEW MEXICO 87501

Form C-102
Revised 10-1-78

All distances must be from the outer boundaries of the Section.

Operator Mobil Producing TX. & N.M. Inc.			Lease (Previously Standard of Texas State 15 State 1527 B #1)		Well No. 1
Unit Letter L	Section 15	Township 16 S	Range 37 E	County Lea	
Actual Footage Location of Well: 660 feet from the west line and 1980 feet from the south line					
Ground Level Elev. 3800'	Producing Formation Pennsylvanian		Pool Lovington, N.E.		Dedicated Acreage 80 Acres

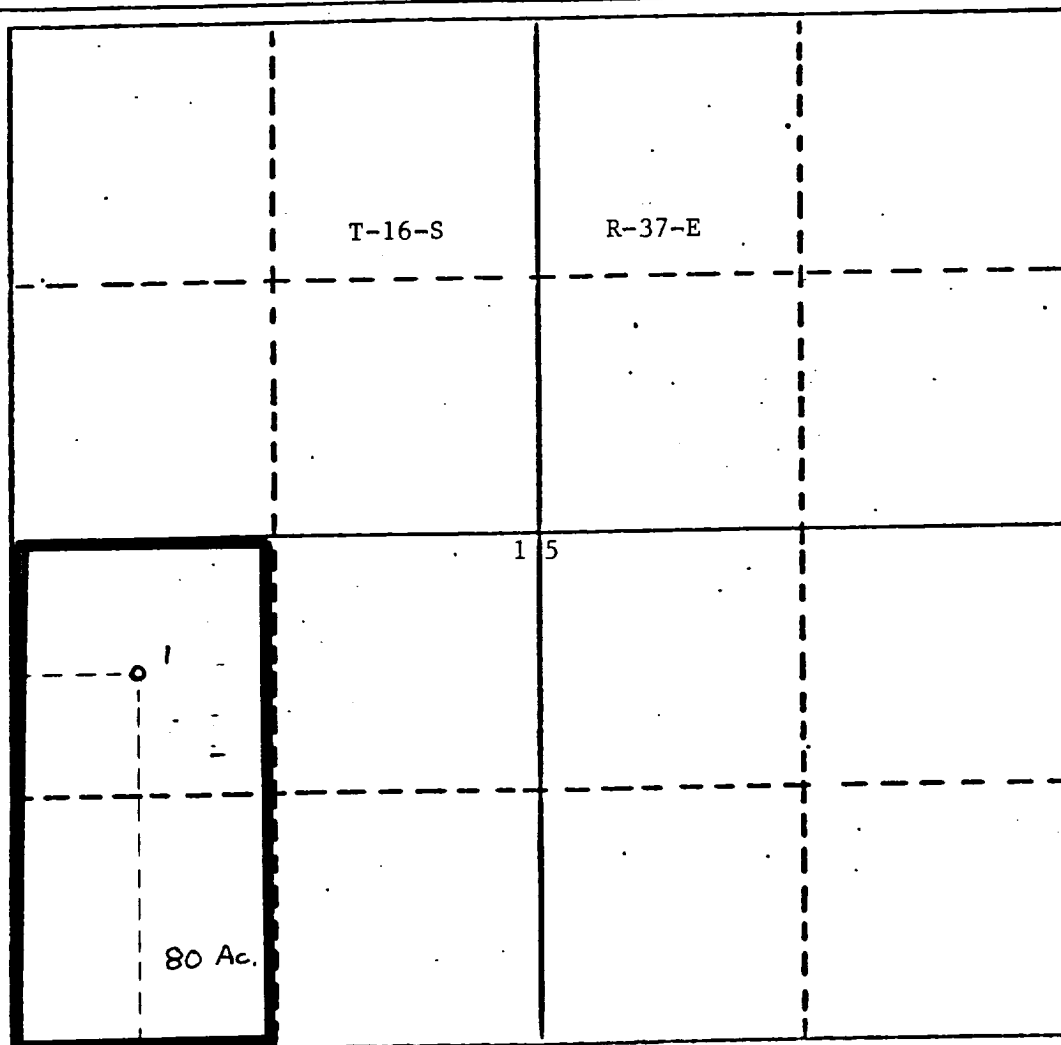
- Outline the acreage dedicated to the subject well by colored pencil or hatchure marks on the plat below.
- If more than one lease is dedicated to the well, outline each and identify the ownership thereof (both as to working interest and royalty).
- If more than one lease of different ownership is dedicated to the well, have the interests of all owners been consolidated by communitization, unitization, force-pooling, etc?

☐ Yes ☐ No If answer is "yes," type of consolidation _____

If answer is "no," list the owners and tract descriptions which have actually been consolidated. (Use reverse side of this form if necessary.) _____

No allowable will be assigned to the well until all interests have been consolidated (by communitization, unitization, forced-pooling, or otherwise) or until a non-standard unit, eliminating such interests, has been approved by the Division.

There are no other wells on this quarter-quarter.



CERTIFICATION

I hereby certify that the information contained herein is true and complete to the best of my knowledge and belief.

C.A. Moore for M. E. Sweeney
Name

Manager Environmental and Regulatory
Position

Mobil Producing Texas & New Mexico Inc.
Company
acting by and through its agent
Mobil Exploration & Producing U.S. Inc.

Date
7/22/87

I hereby certify that the well location shown on this plat was plotted from field notes of actual surveys made by me or under my supervision, and that the same is true and correct to the best of my knowledge and belief.

Date Surveyed

Registered Professional Engineer
and/or Land Surveyor

Certificate No.



RECEIVED

JUL 23 1987

OCD

HOBBS OFFICE