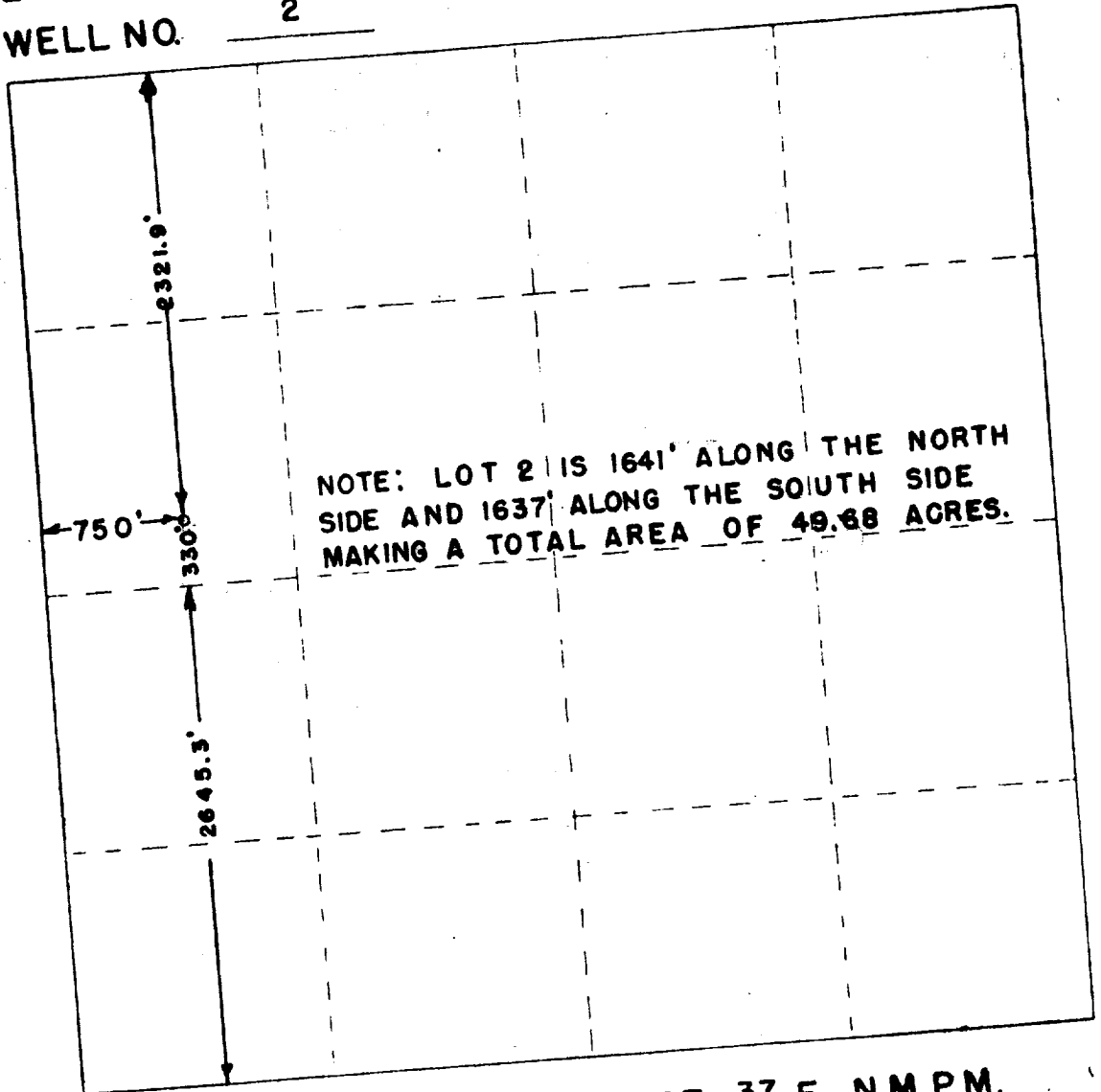


WELL LOCATION SURVEY PLAT

OPERATOR FRED TURNER, JR.
LEASE FEDERAL
WELL NO. 2



SEC. 31, TWP. 16 S., RGE. 37 E., N.M.P.M.

I HEREBY CERTIFY THAT THIS PLAT WAS MADE FROM NOTES TAKEN IN THE FIELD BY ME AND THAT THE SAME IS TRUE AND CORRECT TO BEST OF MY KNOWLEDGE AND BELIEF.

John W. West
JOHN W. WEST, PE & LS NO. 676

MARCH 24, 1952

49.68 Acres