

NEW MEXICO OIL CONSERVATION COMMISSION  
Santa Fe, New Mexico

## NOTICE OF INTENTION TO DRILL OR RECOMPLETION

Notice must be given to the District Office of the Oil Conservation Commission and approval obtained before drilling or recompletion begins. If changes in the proposed plan are considered advisable, a copy of this notice showing such changes will be returned to the sender. Submit this notice in QUINTUPLICATE. One copy will be returned following approval. See additional instructions in Rules and Regulations of the Commission.

Hobbs, New Mexico

(Place)

December 19, 1955

(Date)

OIL CONSERVATION COMMISSION  
SANTA FE, NEW MEXICO

Gentlemen:

You are hereby notified that it is our intention to commence the (Drilling) (Recompletion) of a well to be known as

Shell Oil Company

(Company or Operator)

State of TX

(Lease)

Well No. 5, in 0 (Unit) The well is

located 1900 feet from the east line and 900 feet from the

south

line of Section 8, T-16-S, R-35-S, NMPM.

(GIVE LOCATION FROM SECTION LINE) Townsend-Wolfcamp Pool, Lea County

R-35-S

If State Land the Oil and Gas Lease is No. E-704

If patented land the owner is -

Address -

We propose to drill well with drilling equipment as follows: Rotary Tools

The status of plugging bond is Blanket

Drilling Contractor Co. Rig # 22

We intend to complete this well in the Wolfcamp formation at an approximate depth of 10,550 feet.

## CASING PROGRAM

We propose to use the following strings of Casing and to cement them as indicated:

| Size of Hole | Size of Casing | Weight per Foot | New or Second Hand | Depth  | Sacks Cement |
|--------------|----------------|-----------------|--------------------|--------|--------------|
| 17 1/4"      | 13 3/8"        | 48"             | new                | 350    | 400          |
| 11"          | 8 5/8"         | 32"             | new                | 1,700  | 2000         |
| 7 7/8"       | 5 1/2"         | 15.5 @ 17'      | new                | 10,550 | 450          |

If changes in the above plans become advisable we will notify you immediately.

ADDITIONAL INFORMATION (If recompletion give full details of proposed plan of work.)

DEC 22 1955

Approved: \_\_\_\_\_  
Except as follows:

Sincerely yours,

Shell Oil Company

(Company or Operator)

by

B. Nevill

Original signed by

B. Nevill

Position Division Exploitation Engineer  
and Communications regarding well to

Shell Oil Company

Address Box 1057

Hobbs, New Mexico

By \_\_\_\_\_

Title \_\_\_\_\_

OIL CONSERVATION COMMISSION

NEW MEXICO  
OIL CONSERVATION COMMISSION

Form C-128

Well Location and/or Gas Proration Plat

Date December 19, 1955

Operator Shell Oil Company Lease State MTA

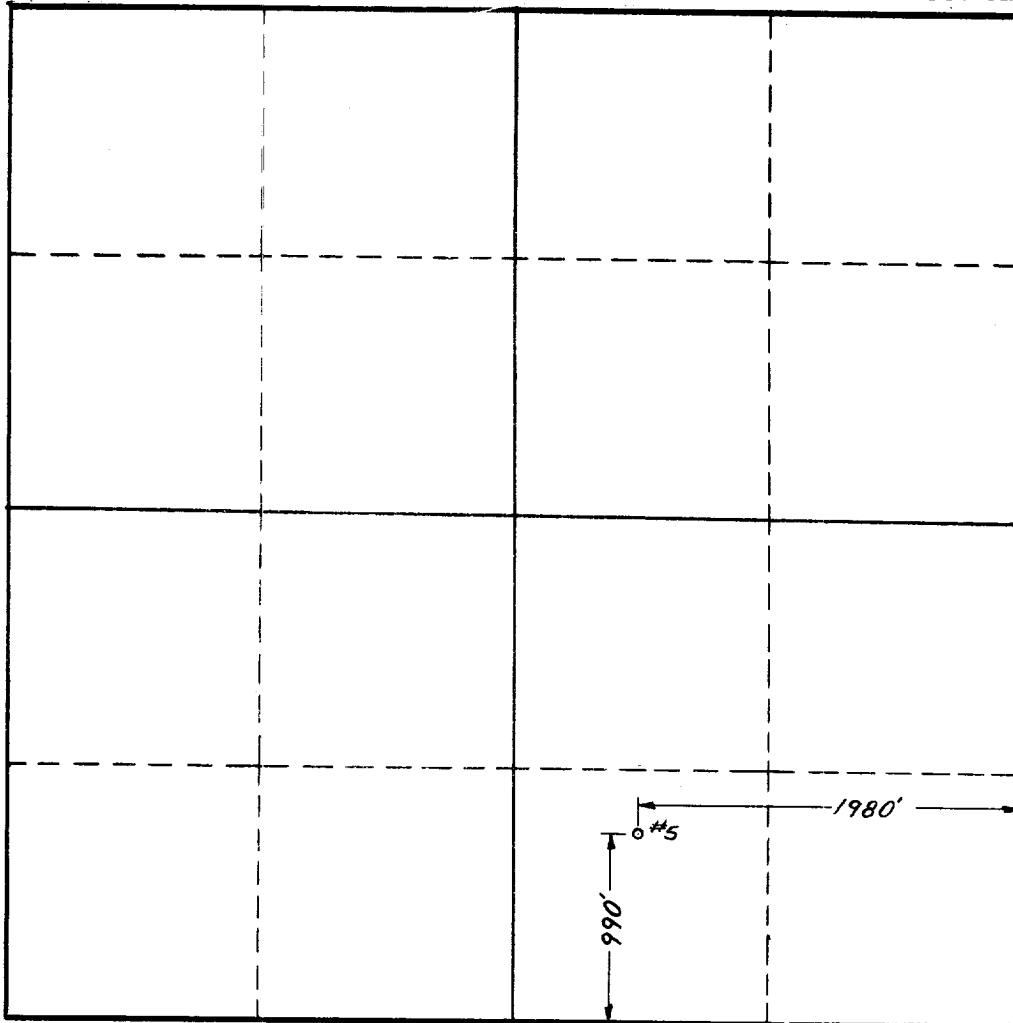
Well No. 5 Section 8 Township -16-S Range -75-E NMPM

Located 990 Feet From south Line, 1980 Feet From east Line,

Lee County, New Mexico. G. L. Elevation \_\_\_\_\_

Name of Producing Formation Wolfcamp Pool Thousand-Wolfcamp Dedicated Acreage 40

(Note: All distances must be from outer boundaries of Section)



SCALE: 1"=1000'

1. Is this Well a Dual Comp. ? Yes \_\_\_ No X.
2. If the answer to Question 1 is yes, are there any other dually completed wells within the dedicated acreage ? Yes \_\_\_ No \_\_\_.

This is to certify that the above plat was prepared from field notes of actual surveys made by me or under my supervision and that the same are true and correct to the best of my knowledge and belief.

Name B. Nevill Original signed by B. Nevill  
Position Division Exploitation Engineer  
Representing Shell Oil Company  
Address Box 1957, Hobbs, New Mexico

Date Surveyed December 15, 1955  
Neal B. Shepard  
Registered Professional Engineer and/or  
Land Surveyor  
Neal B. Shepard, N.M. Cert. No. 1467