

NEW MEXICO OIL CONSERVATION COMMISSION
Santa Fe, New Mexico

NOTICE OF INTENTION TO DRILL OR RECOMPLETE

Notice must be given to the District Office of the Oil Conservation Commission and approval obtained before drilling or recompletion begins. If changes in the proposed plan are considered advisable, a copy of this notice showing such changes will be returned to the sender. Submit this notice in **QUINTUPLICATE**. One copy will be returned following approval. See additional instructions in Rules and Regulations of the Commission.

Hobbs, New Mexico

April 4, 1956

(Place)

(Date)

OIL CONSERVATION COMMISSION
SANTA FE, NEW MEXICO

Gentlemen:

You are hereby notified that it is our intention to commence the (Drilling) ~~(Recompletion)~~ of a well to be known as

Shell Oil Company

(Company or Operator)

State LA

(Lease)

Well No. 7

in 7

(Unit)

The well is

located 1900 feet from the South line and 2710 feet from the

East

line of Section 8, T. 10-N, R. 25-W, NMPM.

(GIVE LOCATION FROM SECTION LINE)

Walford-Wolfman

Pool, 10

Loc. 10

County

If State Land the Oil and Gas Lease is No. 7-704

If patented land the owner is -

Address -

We propose to drill well with drilling equipment as follows: Rotary Tools

The status of plugging bond is Blanket Bond

Drilling Contractor Undetermined

We intend to complete this well in the Walford

formation at an approximate depth of 10,500 feet.

CASING PROGRAM

We propose to use the following strings of Casing and to cement them as indicated:

Size of Hole	Size of Casing	Weight per Foot	New or Second Hand	Depth	Sacks Cement
17 1/4"	13 3/8"	42	new	350	400
11"	8 5/8"	32	new	6,700	2000
7 7/8"	5 1/2"	15.5 - 17	new	10,500	450

If changes in the above plans become advisable we will notify you immediately.

ADDITIONAL INFORMATION (If recompletion give full details of proposed plan of work.)

Approved....., 19.....
Except as follows:

Sincerely yours,

Shell Oil Company

(Company or Operator) Signed by

B. Nevill

B. Nevill

Position..... Division Exploitation Engineer
Send Communications regarding well to

Name..... Shell Oil Company

Address..... Box 1957
Hobbs, New Mexico

OIL CONSERVATION COMMISSION

By.....

Title.....

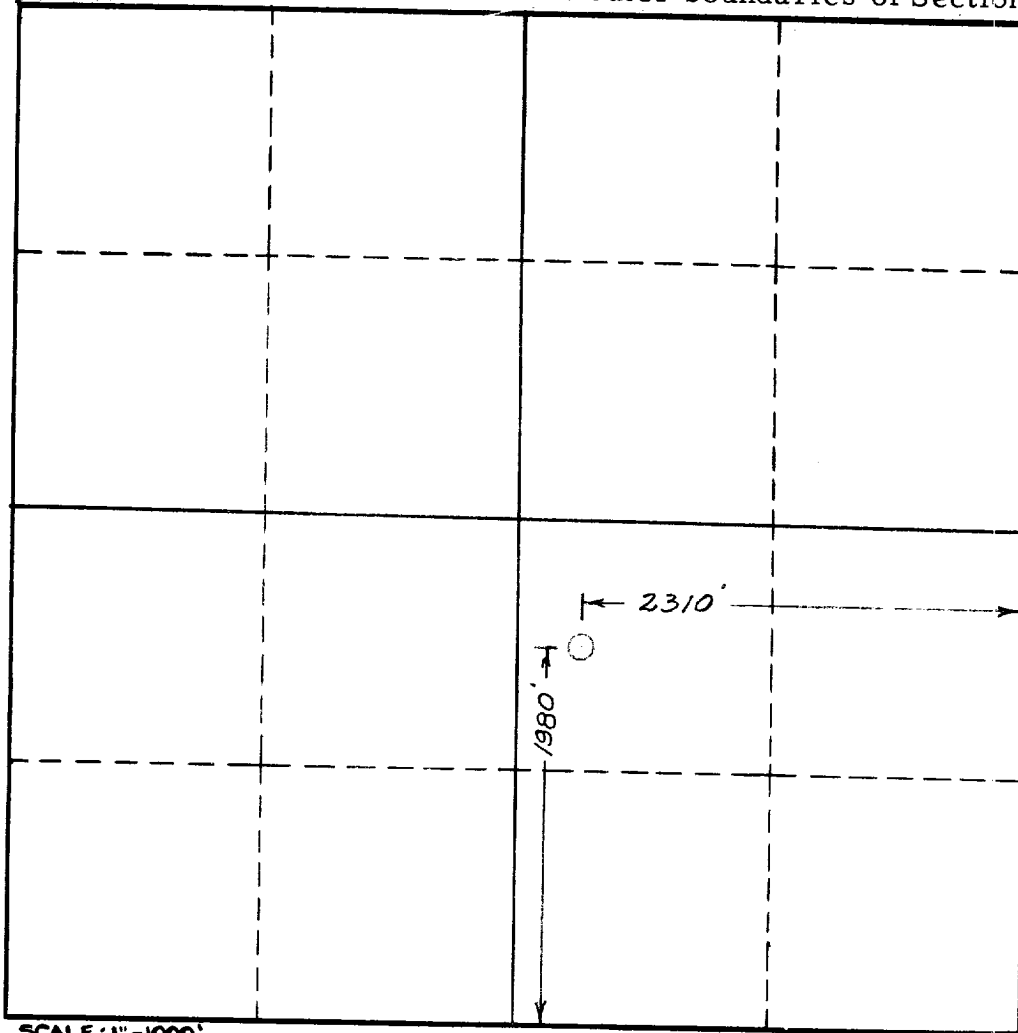
NEW MEXICO
OIL CONSERVATION COMMISSION

Well Location and/or Gas Proration Plat

Form C-128

Operator Shell Oil Company Lease 1955 APR 10 Date April 10, 1956
Well No. 7 Section 8 Township 16-S Range 35-E NMPM
Located 1980 Feet From South Line, 2310 Feet From East Line,
Lea County, New Mexico. G. L. Elevation _____
Name of Producing Formation Gulfport Pool Bunker-Hilf Dedicated Acreage 40

(Note: All distances must be from outer boundaries of Section)



SCALE: 1"=1000'

1. Is this Well a Dual Comp.? Yes No.
2. If the answer to Question 1 is yes, are there any other dually completed wells within the dedicated acreage? Yes No.

This is to certify that the above plat was prepared from field notes of actual surveys made by me or under my supervision and that the same are true and correct to the best of my knowledge and belief.

Name B. Nevill Original signed by B. Nevill
Position Division Exploitation Engineer
Representing Shell Oil Company
Address Box 1957, Hobbs, New Mexico

Date Surveyed April 8, 1956
Neal S. Shepard N. M. Cert. # 1467
Registered Professional Engineer and/or
Land Surveyor
Neal S. Shepard, N. M. Cert. No. 1467