

NEW MEXICO OIL CONSERVATION COMMISSION  
Santa Fe, New Mexico

Form G-101  
Revised (12/1/55)

## NOTICE OF INTENTION TO DRILL

Notice must be given to the District Office of the Oil Conservation Commission and approval obtained before drilling or recompletion begins. If changes in the proposed plan are considered advisable, a copy of this notice showing such changes will be returned to the sender. Submit this notice in QUINTUPLICATE. One copy will be returned following approval. See additional instructions in Rules and Regulations of the Commission. If State Land submit 6 Copies Attach Form G- 128 in triplicate to first 3 copies of form G-101

Midland, Texas

September 18, 1963

(Place)

(Date)

OIL CONSERVATION COMMISSION  
SANTA FE, NEW MEXICO

Gentlemen:

You are hereby notified that it is our intention to commence the Drilling of a well to be known as  
**Tenneco Oil Company**

(Company or Operator)

State Love "A" OG 5379

(Lease)

Well No. 1, in 0 The well is

(Unit)

located 660 feet from the South line and 1980 feet from the East line of Section 32, T. 16-S, R. 33-E, NMPM.

(GIVE LOCATION FROM SECTION LINE)

Wildcat

Lea

County

If State Land the Oil and Gas Lease is No. OG 5379

If patented land the owner is

Address

We propose to drill well with drilling equipment as follows: Rotary Tools

The status of plugging bond is in effect

Drilling Contractor Ralph Love

We intend to complete this well in the Cisco formation at an approximate depth of 11,800 feet.

### CASING PROGRAM

We propose to use the following strings of Casing and to cement them as indicated:

Size of Hole	Size of Casing	Weight per Foot	New or Second Hand	Depth	Sacks Cement
17 1/2	13 3/8	48#	New	350	Suff. to circ.
12 1/4	8 5/8	24# & 32#	New	4400	200
7 7/8	4 1/2	11.6#	New	10800	Suff. to cover all pay zones

If changes in the above plans become advisable we will notify you immediately.

ADDITIONAL INFORMATION (If recompletion give full details of proposed plan of work.)

Approved \_\_\_\_\_, 19\_\_\_\_\_  
Except as follows:

OIL CONSERVATION COMMISSION

Sincerely yours,

TENNECO OIL COMPANY

(Company or Operator)

By A. W. Lang A. W. Lang

Position District Production Superintendent

Send Communications regarding well to

Name Tenneco Oil Company

Address 1800 Wilco Bldg., Midland, Texas

# NEW MEXICO OIL CONSERVATION COMMISSION

## WELL LOCATION AND ACREAGE DEDICATION PLAT

FORM C-12B  
Revised 2/1/57

SEE INSTRUCTIONS FOR COMPLETING THIS FORM ON THE REVERSE SIDE

### SECTION A

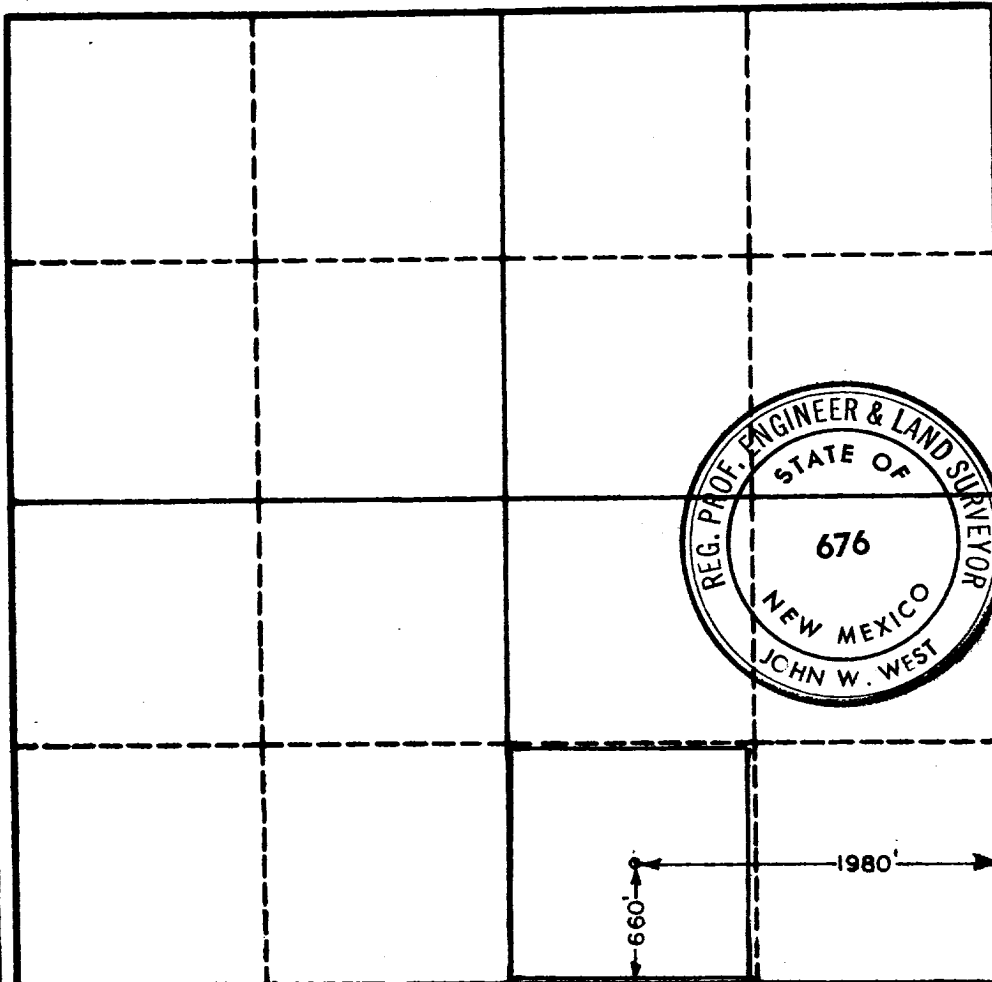
1963 SEP 19 PM 4:50

Operator <b>TENNECO OIL CORP.</b>		Lesse <b>STATE LOWE AOG 5379</b>		Well No. <b>1</b>
Unit Letter <b>O</b>	Section <b>32</b>	Township <b>16 SOUTH</b>	Range <b>33 EAST</b>	County <b>LEA</b>
Actual Footage Location of Well: <b>660</b> feet from the <b>SOUTH</b> line and <b>1980</b> feet from the <b>EAST</b> line				
Ground Level Elev. <b>4925</b>	Producing Formation <b>Gilco</b>		Pool <b>Wildcat</b>	Dedicated Acreage: <b>40</b> Acres

1. Is the Operator the only owner in the dedicated acreage outlined on the plat below? YES ☒ NO ☐ ("Owner" means the person who has the right to drill into and to produce from any pool and to appropriate the production either for himself or for himself and another. (65-3-29 (e) NMSA 1955 Comp.)
2. If the answer to question one is "no," have the interests of all the owners been consolidated by communitization agreement or otherwise? YES ☐ NO ☐ If answer is "yes," Type of Consolidation \_\_\_\_\_
3. If the answer to question two is "no," list all the owners and their respective interests below:

Owner	Land Description

### SECTION B



### CERTIFICATION

I hereby certify that the information in SECTION A above is true and complete to the best of my knowledge and belief.

Name *Art Long* **A. W. Long**  
 Position *Dist. Prod. Supt.*  
 Company *Tenneco Oil Company*  
 Date *September 18, 1963*

I hereby certify that the well location shown on the plat in SECTION B was plotted from field notes of actual surveys made by me or under my supervision, and that the same is true and correct to the best of my knowledge and belief.

Date Surveyed *9-13-63*  
 Registered Professional Engineer and/or Land Surveyor, **JOHN W. WEST**  
*John W. West*  
 Certificate No.    
 N. M. - P. E. & L. S. NO. 676

0 300 600 900 1200 1500 1800 2100 2400 2700 3000

ELF