

NUMBER OF COPIES RECEIVED	
DISTRIBUTION	
SANTA FE	
FILE	
U.S.G.S.	
LAND OFFICE	
TRANSPORTER	OIL
	GAS
PRODUCTION OFFICE	
OPERATOR	

NEW MI CO OIL CONSERVATION COMMISS N
Santa Fe, New Mexico

Form C-101
Revised (12/1/55)

NOTICE OF INTENTION TO DRILL

Notice must be given to the District Office of the Oil Conservation Commission and approval obtained before drilling or recompletion begins. If changes in the proposed plan are considered advisable, a copy of this notice showing such changes will be returned to the sender. Submit this notice in QUINTUPLICATE. One copy will be returned following approval. See additional instructions in Rules and Regulations of the Commission.

If State Land submit 6 Copies Attach Form C- 128 in triplicate to first 3 copies of form C-101

Roswell, New Mexico

October 21, 1963

(Place)

(Date)

OIL CONSERVATION COMMISSION
SANTA FE, NEW MEXICO

Gentlemen:

You are hereby notified that it is our intention to commence the Drilling of a well to be known as

Shell Oil Company

(Company, or Operator)

State MQC

(Lease)

Well No. **1**, in **J** (Unit) The well is

located **1980** feet from the **South** line and **1980** feet from the

east line of Section **17**, T. **-16-S**, R. **32-E**, NMPM.

(GIVE LOCATION FROM SECTION LINE)

Mesa-Queen Pool, **Lea** County

R-32-E

If State Land the Oil and Gas Lease is No. **00-6014**

If patented land the owner is **-**

Address **-**

T We propose to drill well with drilling equipment as follows: **Rotary Tools**

16 The status of plugging bond is **Blanket**

S Drilling Contractor **Yates Drilling Company**

We intend to complete this well in the **Queen** formation at an approximate depth of **3500** feet.

CASING PROGRAM

We propose to use the following strings of Casing and to cement them as indicated:

Size of Hole	Size of Casing	Weight per Foot	New or Second Hand	Depth	Sacks Cement
9 5/8"	7"	23#	New	380'	380
6 1/4"	4 1/2"	9.5#	New	3485'	150

If changes in the above plans become advisable we will notify you immediately.

ADDITIONAL INFORMATION (If recompletion give full details of proposed plan of work.)

Approved _____, 19____
Except as follows:

Sincerely yours,

Shell Oil Company

(Company or Operator) Signed By

By **R. A. Lowery** **R. A. LOWERY**

Position **District Exploitation Engineer**

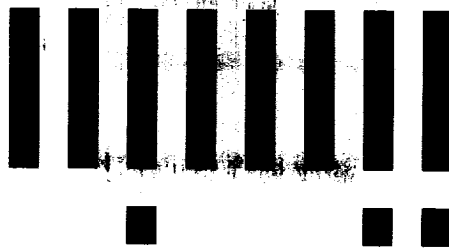
Send Communications regarding well to

Name **Shell Oil Company**

Address **P. O. Box 1858, Roswell, New Mexico 88201**

OIL CONSERVATION COMMISSION

By _____



LTR



Job separation sheet

NUMBER OF COPIES RECEIVED	
DISTRIBUTION	
SANTA FE	
FILE	
U.S.G.S.	
LAND OFFICE	
TRANSPORTER	OIL
	GAS
PRODUCTION OFFICE	
OPERATOR	

NEW MEXICO OIL CONSERVATION COMMISSION

WELL LOCATION AND ACREAGE DEDICATION PLAT

SEE INSTRUCTIONS FOR COMPLETING THIS FORM ON THE REVERSE SIDE

FORM C-128
Revised 5/1/57

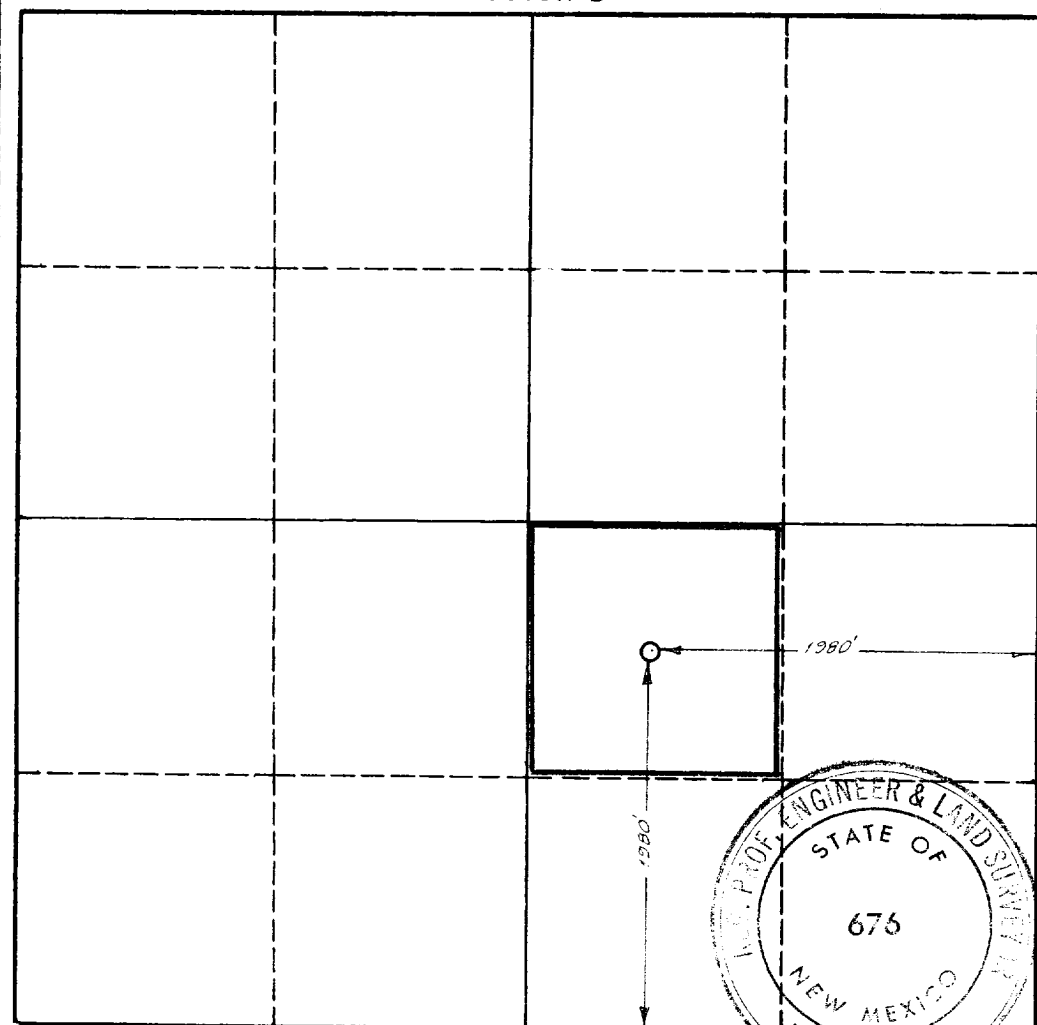
OCT 23 11 05 AM '63

SECTION A					
Operator Shell Oil Company		Lease State MQC		Well No. 1	
Unit Letter J	Section 17	Township 16S	Range 32E	County Lea	
Actual Footage Location of Well: 1980 feet from the south line and 1980 feet from the east line					
Ground Level Elev. not available	Producing Formation Queen		Pool Mesa-Queen	Dedicated Acreage: 40 Acres	

1. Is the Operator the only owner in the dedicated acreage outlined on the plat below? YES ☒ NO ____ . ("Owner" means the person who has the right to drill into and to produce from any pool and to appropriate the production either for himself or for himself and another. (65-3-29 (e) NMSA 1935 Comp.)
2. If the answer to question one is "no," have the interests of all the owners been consolidated by communitization agreement or otherwise? YES ____ NO ____ . If answer is "yes," Type of Consolidation _____
3. If the answer to question two is "no," list all the owners and their respective interests below:

Owner	Land Description

SECTION B



CERTIFICATION

I hereby certify that the information in SECTION A above is true and complete to the best of my knowledge and belief.

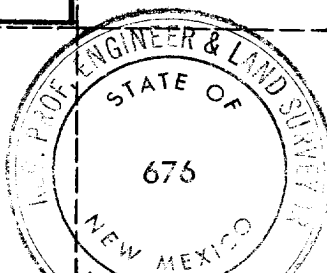
Original Signed By
R. A. LOWERY

Name	R. A. Lowery
Position	District Exploitation Engineer
Company	Shell Oil Company
Date	October 21, 1963

I hereby certify that the well location shown on the plat in SECTION B was plotted from field notes of actual surveys made by me or under my supervision, and that the same is true and correct to the best of my knowledge and belief.

Date Surveyed	10-21-63
Registered Professional Engineer and/or Land Surveyor	John W. West

Certificate No. **676**



INSTRUCTIONS FOR COMPLETION OF FORM C-128

1. Operator shall furnish and certify to the information called for in Section A.
2. Operator shall outline the dedicated acreage for *both* oil and gas wells on the plat in Section B.
3. A registered professional engineer or land surveyor registered in the State of New Mexico or approved by the Commission shall show on the plat the location of the well and certify this information in the space provided.
4. All distances shown on the plat must be from the outer boundaries of the Section.
5. If additional space is needed for listing owners and their respective interests as required in question 3 of Section A, please use space below.



LTR



Job separation sheet

**NEW MEXICO OIL CONSERVATION COMMISSION
WELL LOCATION AND ACREAGE DEDICATION PLAT**

Form C-102
Supersedes C-128
Effective 1-1-65

All distances must be from the outer boundaries of the Section.

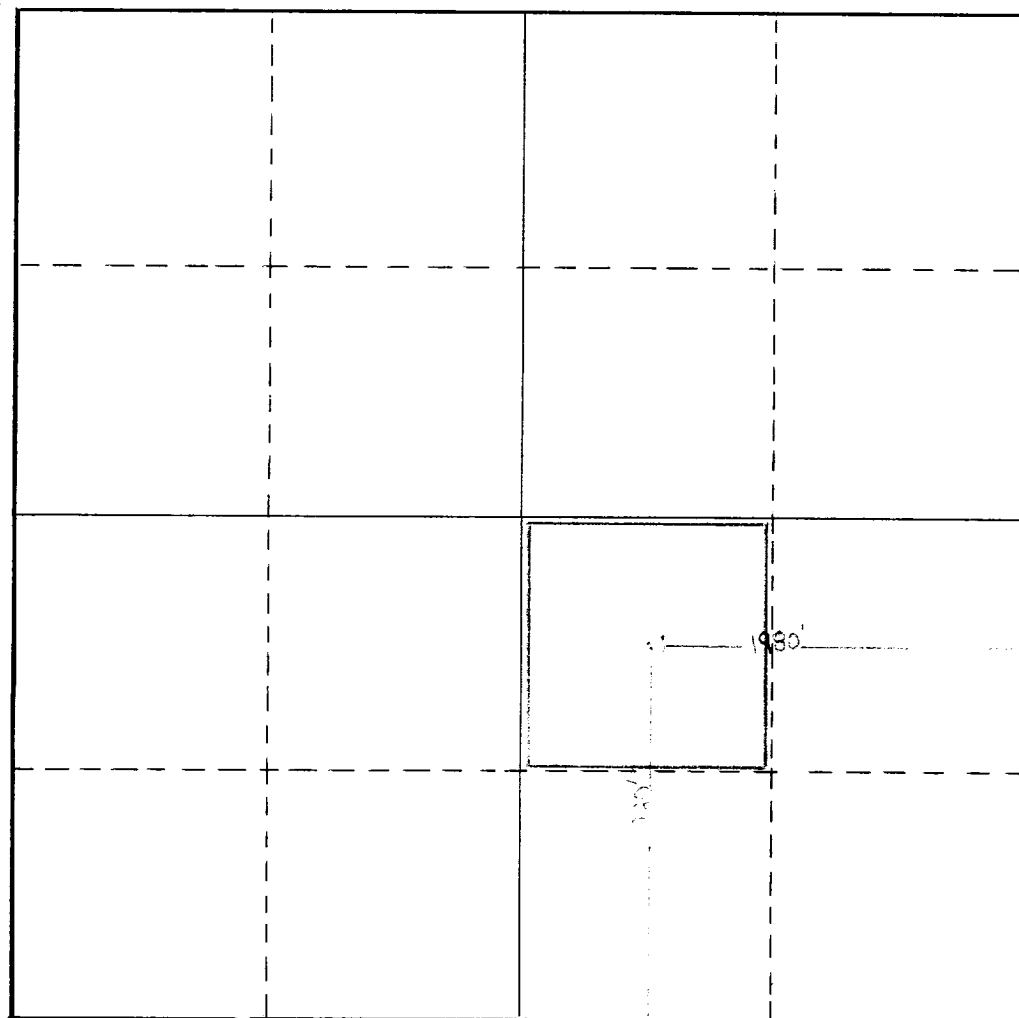
Operator Shell Oil Company (Western Division)			Lease August 11, 1966		Well No. 1
Unit Letter J	Section 17	Township 16S	Range 32E	County Lea	
Actual Footage Location of Well: <div style="display: flex; justify-content: space-between;"> 1980 feet from the south line and 1980 feet from the east line </div>					
Ground Level Elev. 4345	Producing Formation Queen (Gas)	Pool Mesa-Queen		Dedicated Acreage: 40 Acres	

1. Outline the acreage dedicated to the subject well by colored pencil or hachure marks on the plat below.
2. If more than one lease is dedicated to the well, outline each and identify the ownership thereof (both as to working interest and royalty).
3. If more than one lease of different ownership is dedicated to the well, have the interests of all owners been consolidated by communitization, unitization, force-pooling, etc?

☐ Yes ☐ No If answer is "yes," type of consolidation _____

If answer is "no," list the owners and tract descriptions which have actually been consolidated. (Use reverse side of this form if necessary.) _____

No allowable will be assigned to the well until all interests have been consolidated (by communitization, unitization, forced-pooling, or otherwise) or until a non-standard unit, eliminating such interests, has been approved by the Commission.



CERTIFICATION

I hereby certify that the information contained herein is true and complete to the best of my knowledge and belief.

Name
Original Signed By **N. W. Harrison**
Position **Senior Exploitation Engineer**
Company **Shell Oil Company**

Date
August 11, 1966
Re-classified as a gas well
September 1, 1966

I hereby certify that the well location shown on this plat was plotted from field notes of actual surveys made by me or under my supervision, and that the same is true and correct to the best of my knowledge and belief.

Date Surveyed

Registered Professional Engineer
and/or Land Surveyor

Certificate No.

