

NUMBER OF COPIES RECEIVED	
DISTRIBUTION	
SANTA FE	
FILE	
U.S.G.S.	
LAND OFFICE	
TRANSPORTER	OIL GAS
PRODUCTION OFFICE	
OPERATOR	

NEW ME. O OIL CONSERVATION COMMISS
Santa Fe, New Mexico

Form C-101
Revised (12/1/55)

NOTICE OF INTENTION TO DRILL

Notice must be given to the District Office of the Oil Conservation Commission and approval obtained before drilling or recompletion begins. If changes in the proposed plan are considered advisable, a copy of this notice showing such changes will be returned to the sender. Submit this notice in QUINTUPPLICATE. One copy will be returned following approval. See additional instructions in Rules and Regulations of the Commission. If State Land submit 6 Copies Attach Form C- 128 in triplicate to first 3 copies of form C-101

Midwest Oil Corporation

(Place)

August 14, 1964

(Date)

OIL CONSERVATION COMMISSION
SANTA FE, NEW MEXICO

Gentlemen:

You are hereby notified that it is our intention to commence the Drilling of a well to be known as

Midwest Oil Corporation

(Company or Operator)

T. P. State

(Lease)

, Well No. **1**, in **H** (Unit) The well is

located **1980'** feet from the **North** line and **660** feet from the

East line of Section **31**, T. **16-S**, R. **38-E**, NMPM.

(GIVE LOCATION FROM SECTION LINE) **Wildcat** Pool, **Lea** County

If State Land the Oil and Gas Lease is No. **E-9701**

If patented land the owner is.....

Address.....

We propose to drill well with drilling equipment as follows: **Rotary**

The status of plugging bond is **Active**

Drilling Contractor.....

We intend to complete this well in the **Abo** formation at an approximate depth of **10,000** feet.

CASING PROGRAM

We propose to use the following strings of Casing and to cement them as indicated:

Size of Hole	Size of Casing	Weight per Foot	New or Second Hand	Depth	Sacks Cement
17 1/2"	13 3/8"	35.6#	New	350	350
11 "	8 5/8"	24# & 32#	New	5200	450
7 7/8"	4 1/2"	11.6#	New	10,000	*

If changes in the above plans become advisable we will notify you immediately.

ADDITIONAL INFORMATION (If recompletion give full details of proposed plan of work.)

*** To be determined by depth of pay zone or zones.**

AUG 17 1964

Approved....., 19.....
Except as follows:

Sincerely yours,

MIDWEST OIL CORPORATION

(Company or Operator)

By.....

Position **District Clerk**

Send Communications regarding well to

Name **Midwest Oil Corporation**

Address **1500 Wilco Bldg., Midland, Texas**

OIL CONSERVATION COMMISSION

Enclosure 2/20/64

NEW MEXICO OIL CONSERVATION COMMISSION
WELL LOCATION AND ACREAGE DEDICATION PLAT

HOBBBS OFFICE D. C. C.
AUG 17 8 38 AM '64
FORM C-128
Revised 5/1/57

SEE INSTRUCTIONS FOR COMPLETING THIS FORM ON THE REVERSE SIDE

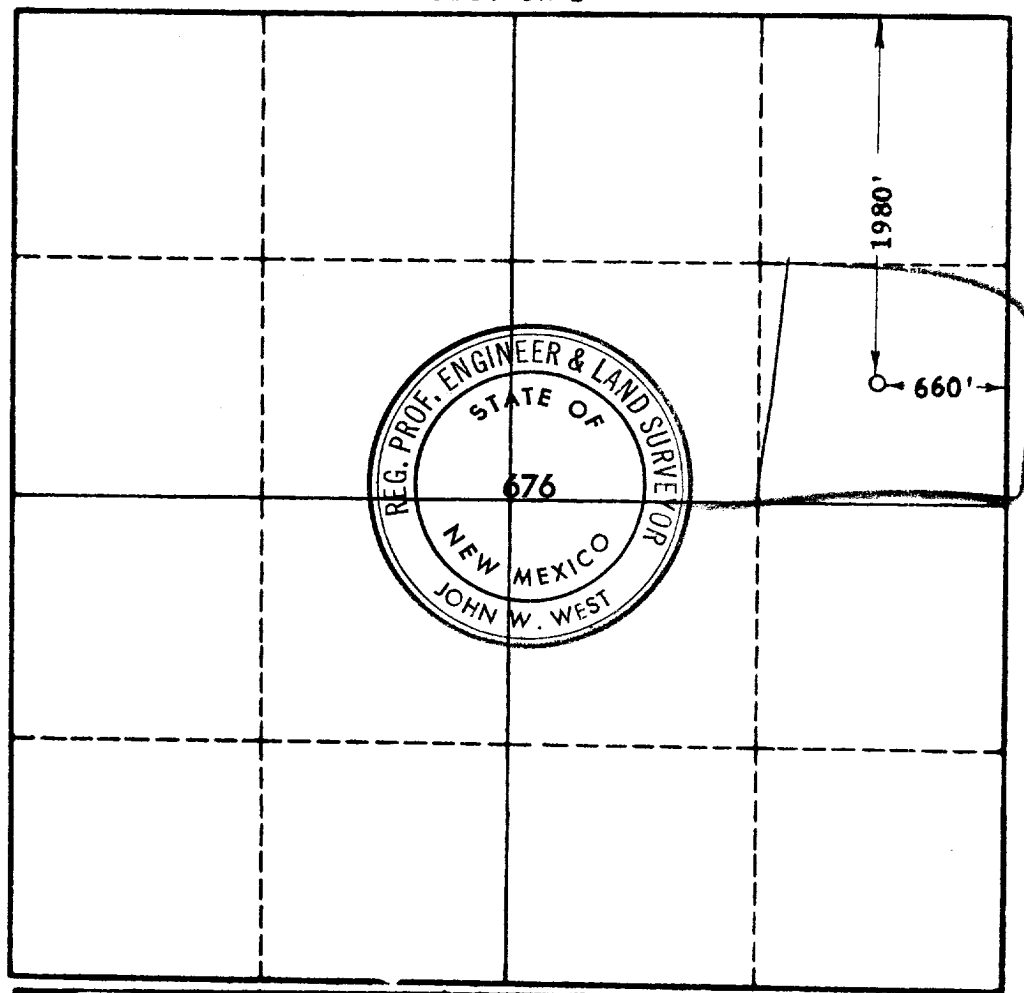
SECTION A

Operator MIDWEST OIL CORP.		Lease T.P. STATE		Well No. 1
Unit Letter H	Section 31	Township 16 SOUTH	Range 38 EAST	County LEA
Actual Footage Location of Well: 1980 feet from the NORTH line and 660 feet from the EAST line				
Ground Level Elev. 3738.5	Producing Formation Abo	Pool Wildcat	Dedicated Acreage: 40 Acres	

1. Is the Operator the only owner in the dedicated acreage outlined on the plat below? YES ☒ NO ____ . ("Owner" means the person who has the right to drill into and to produce from any pool and to appropriate the production either for himself or for himself and another. (65-3-29 (e) NMSA 1935 Comp.)
2. If the answer to question one is "no," have the interests of all the owners been consolidated by communitization agreement or otherwise? YES ____ NO ____ . If answer is "yes," Type of Consolidation ____
3. If the answer to question two is "no," list all the owners and their respective interests below:

Owner	Land Description

SECTION B



CERTIFICATION

I hereby certify that the information in SECTION A above is true and complete to the best of my knowledge and belief.

Name	W. E. Mittenberg
Position	District Clerk
Company	Midwest Oil Corporation
Date	8-14-64

I hereby certify that the well location shown on the plat in SECTION B was plotted from field notes of actual surveys made by me or under my supervision, and that the same is true and correct to the best of my knowledge and belief.

Date Surveyed	JULY 23, 1964
Registered Professional Engineer and/or Land Surveyor,	JOHN W. WEST
Certificate No.	John W. West
N. M. - P. E. & L. S. NO.	676

0 330 660 990 1320 1650 1980 2310 2640 2000 1500 1000 500