

NEW MEXICO OIL CONSERVATION COMMISSION
WELL LOCATION AND ACREAGE DEDICATION PLAT OFFICE O.C.C.

Form C-102
 Supersedes C-128
 Effective 1-1-65

All distances must be from the outer boundaries of the Section.

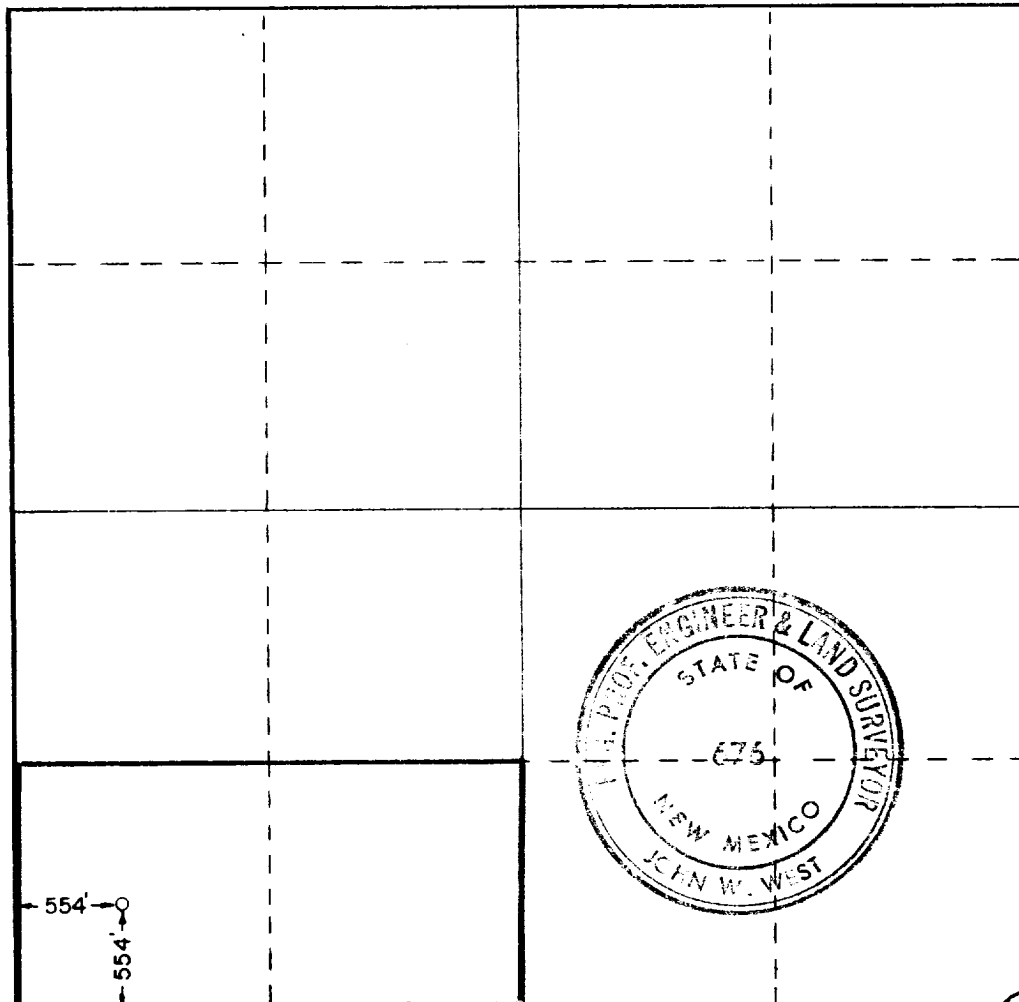
Operator J. M. HUBER CORP.			Lease STOLTZ STATE		Well No. 1
Unit Letter M	Section 6	Township 15 SOUTH	Range 35 EAST	County LEA.	
Actual Footage Location of Well: 554 feet from the SOUTH line and 554 feet from the WEST line					
Ground Level Elev. 4049.7	Producing Formation Wolfcamp		Pool Morton Lower Wolfcamp	Dedicated Acreage: 80.36 Acres	

1. Outline the acreage dedicated to the subject well by colored pencil or hachure marks on the plat below.
2. If more than one lease is dedicated to the well, outline each and identify the ownership thereof (both as to working interest and royalty).
3. If more than one lease of different ownership is dedicated to the well, have the interests of all owners been consolidated by communitization, unitization, force-pooling, etc?

☐ Yes ☐ No If answer is "yes," type of consolidation _____

If answer is "no," list the owners and tract descriptions which have actually been consolidated. (Use reverse side of this form if necessary.) _____

No allowable will be assigned to the well until all interests have been consolidated (by communitization, unitization, forced-pooling, or otherwise) or until a non-standard unit, eliminating such interests, has been approved by the Commission.



CERTIFICATION

I hereby certify that the information contained herein is true and complete to the best of my knowledge and belief.

Name *Shed L. Merde*
 Title **District Prod. Supt.**
 Company **J.M. Huber Corporation**
 Date **3-23-1966**

I hereby certify that the well location shown on this plat was plotted from field notes of actual surveys made by me or under my supervision, and that the same is true and correct to the best of my knowledge and belief.

Date Surveyed
3/22/66
 Registered Professional Engineer and/or Land Surveyor
John W. West
 Certificate No.
NM PE & LS NO. 676

