

NEW MEXICO OIL CONSERVATION COMMISSION
WELL LOCATION AND ACREAGE DEDICATION PLAT, O. C. C.

Form C-102
 Supersedes C-128
 Effective 1-1-65

All distances must be from the outer boundaries of the Section.

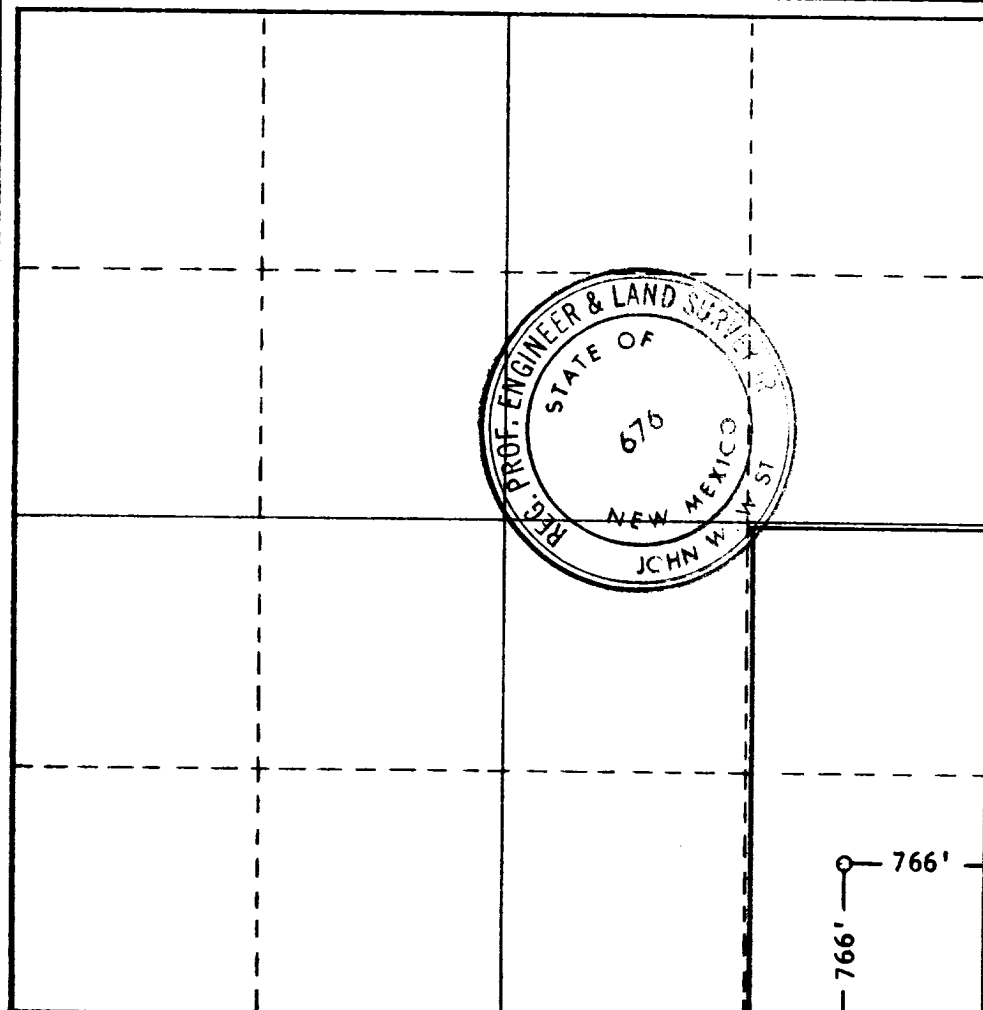
| | | | | | |
|--|--|--------------------------------------|---------------------------------------|----------------------|----------------------|
| Operator UNION OIL COMPANY OF CALIFORNIA | | | Lease FEB. 28, 11 04 AM '66 | | Well No. 1 |
| Unit Letter P | Section 12 | Township 15 SOUTH | Range 34 EAST | County LEA | |
| Actual Footage Location of Well: 766 feet from the SOUTH line and 766 feet from the EAST line | | | | | |
| Ground Level Elev. 4049 Estimated | Producing Formation Wolfcamp | Pool Norton-Lower Wolfcamp | Dedicated Acreage: 80 Acres | | |

1. Outline the acreage dedicated to the subject well by colored pencil or hatchure marks on the plat below.
2. If more than one lease is dedicated to the well, outline each and identify the ownership thereof (both as to working interest and royalty).
3. If more than one lease of different ownership is dedicated to the well, have the interests of all owners been consolidated by communitization, unitization, force-pooling, etc?

☒ Yes ☐ No If answer is "yes," type of consolidation **Communitization**

If answer is "no," list the owners and tract descriptions which have actually been consolidated. (Use reverse side of this form if necessary.) _____

No allowable will be assigned to the well until all interests have been consolidated (by communitization, unitization, forced-pooling, or otherwise) or until a non-standard unit, eliminating such interests, has been approved by the Commission.



CERTIFICATION

I hereby certify that the information contained herein is true and complete to the best of my knowledge and belief.

Name *John W. Whist*
 Position **Operations District Engineer Sup.**
 Company **Union Oil Co. of California**

Date
June 22, 1966

I hereby certify that the well location shown on this plat was plotted from field notes of actual surveys made by me or under my supervision, and that the same is true and correct to the best of my knowledge and belief.

Date Surveyed
JUNE 15, 1966

Registered Professional Engineer and/or Land Surveyor

John W. Whist
 Certificate No. **676**