

NEW MEXICO OIL CONSERVATION COMMISSION  
WELL LOCATION AND ACREAGE DEDICATION PLAT

Form C-102  
Superior des C-128  
Effective 1-1-65

All distances must be from the outer boundaries of the Section.

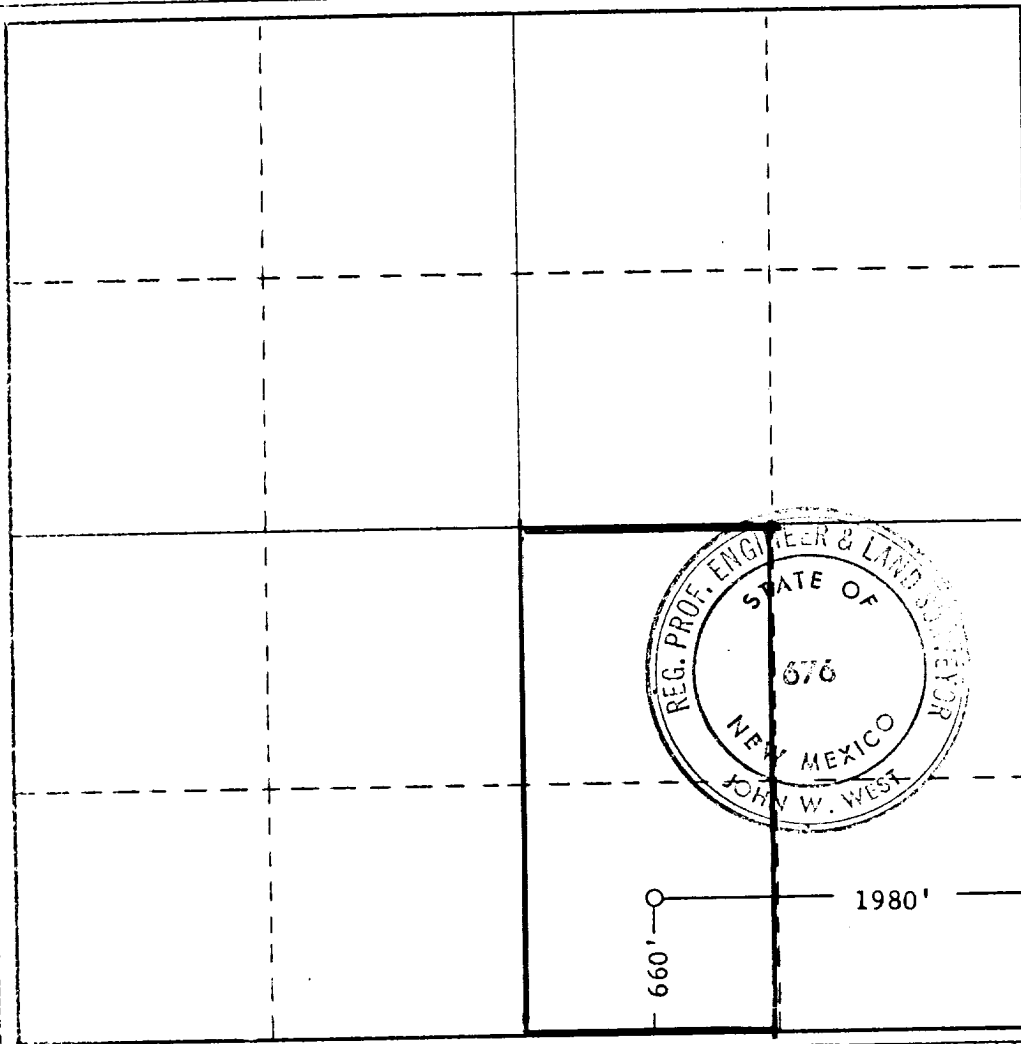
Operator <b>MIDWEST OIL CORP.</b>		Lease <b>STATE G</b>		Well No. <b>1</b>
Section <b>O</b>	Section <b>23</b>	Township <b>16 SOUTH</b>	Range <b>33 EAST</b>	County <b>LEA</b>
Actual Postage Location of Well: <b>660</b> feet from the <b>SOUTH</b> line and <b>1930</b> feet from the <b>EAST</b> line				
Ground Level Elev. <b>4177.6</b>	Producing Formation <b>Lower Wolfcamp</b>	Pool <b>Kemnitz</b>	Dedicated Acreage: <b>80</b> Acres	

1. Outline the acreage dedicated to the subject well by colored pencil or hachure marks on the plat below.
2. If more than one lease is dedicated to the well, outline each and identify the ownership thereof (both as to working interest and royalty).
3. If more than one lease of different ownership is dedicated to the well, have the interests of all owners been consolidated by communitization, unitization, force-pooling, etc?

☐ Yes ☐ No If answer is "yes," type of consolidation \_\_\_\_\_

If answer is "no," list the owners and tract descriptions which have actually been consolidated. (Use reverse side of this form if necessary.) \_\_\_\_\_

No allowable will be assigned to the well until all interests have been consolidated (by communitization, unitization, forced-pooling, or otherwise) or until a non-standard unit, eliminating such interests, has been approved by the Commission.



CERTIFICATION

I hereby certify that the information contained herein is true and complete to the best of my knowledge and belief.

*Norma E. [Signature]*

Name

*Prod. Clerk*

Position

*Midwest Oil Corp.*

Company

*Nov. 4, 1966*

Date

I hereby certify that the well location shown on this plat was plotted from field notes of actual surveys made by me or under my supervision, and that the same is true and correct to the best of my knowledge and belief.

Date Surveyed

**Nov. 4, 1966**

Registered Professional Engineer and/or Land Surveyor

*John W. West*

Certificate No.

**676**

0 330 660 990 1320 1650 1980 2310 2640 2000 1500 1000 500 0

COUNTY LEA FIELD Wildcat STATE NM MAP

JPR MIDWEST OIL CORPORATION

1 State "G" CO-ORD

Sec. 23, T-16-S, R-33-E MN 21925

660' FSL, 1980' FEL of Sec.

Spd 11-18-66

Cmp 2-15-67

CSG & SX - TUBING	CLASS		FORMATION	DATUM
	FORMATION	DATUM		
13 3/8" 300' 300				
8 5/8" 4500' 500				
5 1/2" 11540' 375				

LOGS EL GR RA IND HC A

TD 11540', PBD 11461'

IP Penn. Perfs 10710-768' Pmpd 275 BOPD + 16 BW. Pot. Based on 24 hr test, gravity 40., GOR 875.

Distribution limited and publication prohibited by subscribers' agreement.  
Reproduction rights reserved by Williams & Lee Scouting Service, Inc.

PROP DEPTH 11,700' TYPE RT

CONT.  
DATE

F.R. 11-17-66; Opr's Elev. 4177' GL  
PD 11,700' - Penn.  
11-21-66 Drlg. 2700'.  
11-28-66 Drlg. 4460' 1m & dolo.  
12-5-66 Drlg. 6022' 1m.  
DST 4286-4500', open 1 hr,  
Rec 75' Sli OCM + 1 qt. free oil,  
30 min ISIP 372#, FP 106-119#,  
45 min FSIP 252#.  
12-12-66 Drlg. 7815' 1m & sh.  
12-19-66 Drlg. 9614' 1m & sh.  
1-3-67 TD 11320', prep DST 11240-320'.

1-3-67

Cont.

DST 10740-760', open 1 hr,  
GTS during SI @ TSTM,  
Rec 120' O&GCM,  
1 hr ISIP 2926#, FP 20-30#,  
1 hr 30 min FSIP 2970#, HP 4881-4881#.

1-9-67

TD 11540', rng csg.  
DST (Penn) 11240-320', open 1 hr,  
GTS 1 hr @ TSTM,  
Rec 60' oil (Gravity 42.) + 170' O&GCM,  
1 hr ISIP 4336#, FP 65-88#,  
1 hr 30 min FSIP 4445#, HP 5365-5365#.  
DST (Seaman) 11475-508', open 1 hr 30 mins,  
GTS 52 mins @ TSTM,  
Rec 1500' WB, 200' free oil + 90' DM,  
1 hr ISIP 3876#, FP 635-657#.

1-16-67

2 hr FSIP 3066#, HP 5540#.

TD 11540', swbg.

Perf 11482-496' W/2 SPF

Acid (11482-496') 1000 gals.

Swbd 63 BO + 15 BAW in 8 hrs.

1-23-67

TD 11540', PBD 11461', swbg.

Swbd load + 10 BNO + 5 BFW (11482-496')

Acid (11482-496') 6000 gals 15%

Swbd 33 BO + 77 BA&FW in 20 hrs (11482-496')

Acid (11482-496') 10,000 gals.

Flwd load.

Swbd 27 BO + 59 BFW in 12 hrs (11482-496')

Set CIBP @ 11461'

Perf @ 10710', 10719', 10738-768' W/1 SPF

Acid (10710-768') 1000 gals MA

Swbd 5 BLWPH

30-025-21925

LEA Wildcat NM Sec. 23-16S-33E  
MIDWEST OIL CORP., #1 State "G" Page #3

1-30-67 TD 11540', PBD 11461', SI.  
Swbd 6 BF in 2 hrs (95% oil, 5% Emulsion)  
(10710-768')  
Acid (10710-768') 10,000 gals.  
Swbd & Flwd 128 BO + 7 BLW in 10 hrs.  
Flwd 99 BO in 5½ hrs & died.  
2-6-67 TD 11540', PBD 11461', WO Pmpg Equipment.  
2-13-67 TD 11540', PBD 11461', prep to pump.  
2-20-67 TD 11540', PBD 11461', COMPLETE.  
LOG TOPS: Anhydrite 1481', Yates 2749',  
San Andres 4441', Glorieta 5943', Tubb  
7238', Abo 7951', Wolfcamp Lm 9772',  
Kemnitz 10704', Seaman 11402'.