

NEW MEXICO OIL CONSERVATION COMMISSION
WELL LOCATION AND ACREAGE DEDICATION PLAT
HOBBS OFFICE O. C. C.

Form C-102
Supersedes C-128
Effective 1-1-65

All distances must be from the outer boundaries of the Section.

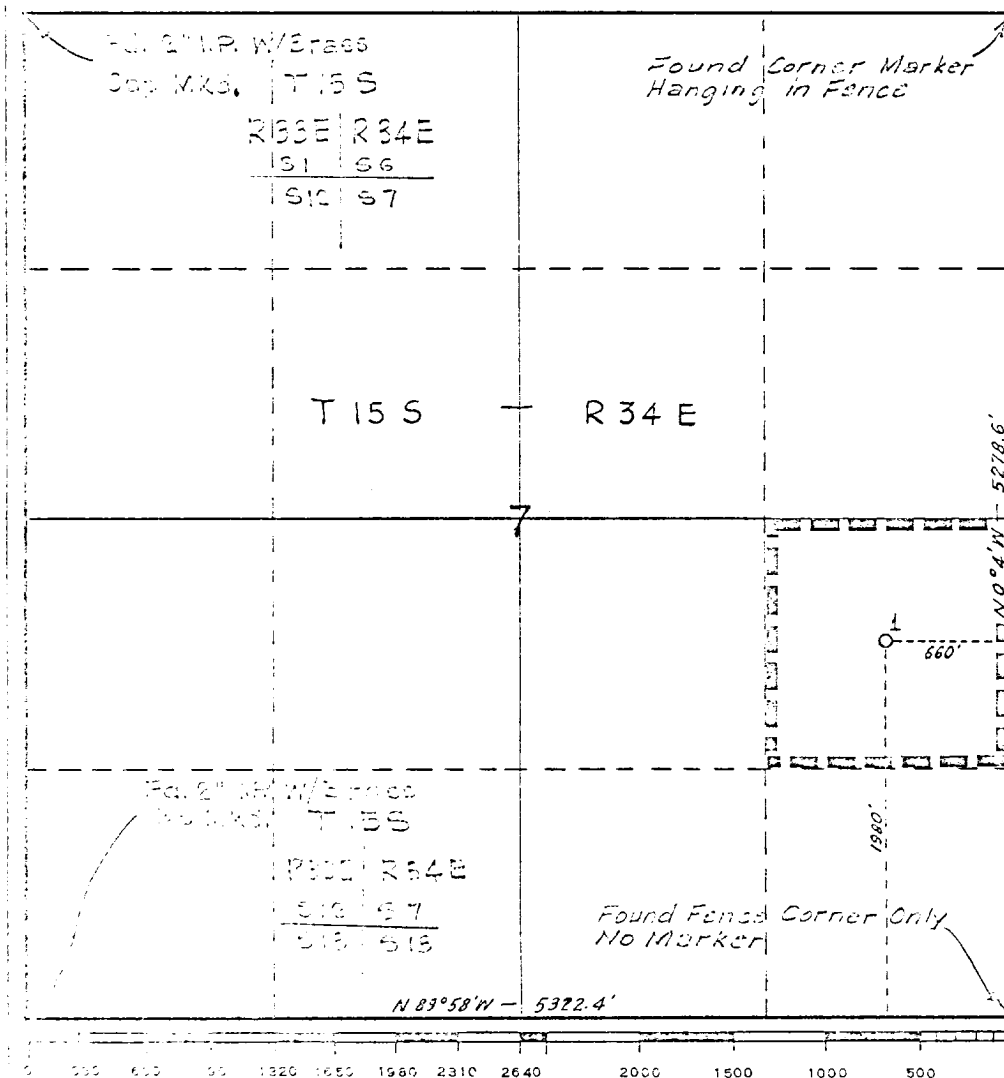
Oil Well			Lease		Well No.
Mobil Oil Corporation			Marie Etcheverry		1
Unit Letter	Section	Township	Range	County	
7	7	15S	34E	Lea	
Actual Section Location of Well:					
1980 feet from the south line and		660 feet from the east line			
Ground Level Elev.	Producing Formation	Pool	Dedicated Acreage:		
4155.5	Penn (Saunders Ranger)	Wildcat	40 Acres		

1. Outline the acreage dedicated to the subject well by colored pencil or hachure marks on the plat below.
2. If more than one lease is dedicated to the well, outline each and identify the ownership thereof (both as to working interest and royalty).
3. If more than one lease of different ownership is dedicated to the well, have the interests of all owners been consolidated by communitization, unitization, force-pooling, etc?

☐ Yes ☐ No If answer is "yes," type of consolidation _____

If answer is "no," list the owners and tract descriptions which have actually been consolidated. (Use reverse side of this form if necessary.) _____

No allowable will be assigned to the well until all interests have been consolidated (by communitization, unitization, forced-pooling, or otherwise) or until a non-standard unit, eliminating such interests, has been approved by the Commission.



CERTIFICATION

I hereby certify that the information contained herein is true and complete to the best of my knowledge and belief.

A. D. Bond

Name

A. D. Bond

Position

Proration Staff Assistant

Company

Mobil Oil Corporation

Date

June 7, 1967

I hereby certify that the well location shown on this plat was plotted from field notes of actual surveys made by me or under my supervision, and that the same is true and correct to the best of my knowledge and belief.

Date Surveyed

June 5, 1967

Registered Professional Engineer and/or Land Surveyor

W. D. Gill
W. D. Gill

Certificate No.

1415