

12-1-55

Ref: 100

11,301-11,302
11,303-11,304
11,305-11,306

21, 1961

11, 15, 19, 23, 27, 31, 35, 39, 43, 47, 51, 55, 59, 63, 67, 71, 75, 79, 83, 87, 91, 95, 99, 103, 107, 111, 115, 119, 123, 127, 131, 135, 139, 143, 147, 151, 155, 159, 163, 167, 171, 175, 179, 183, 187, 191, 195, 199, 203, 207, 211, 215, 219, 223, 227, 231, 235, 239, 243, 247, 251, 255, 259, 263, 267, 271, 275, 279, 283, 287, 291, 295, 299, 303, 307, 311, 315, 319, 323, 327, 331, 335, 339, 343, 347, 351, 355, 359, 363, 367, 371, 375, 379, 383, 387, 391, 395, 399, 403, 407, 411, 415, 419, 423, 427, 431, 435, 439, 443, 447, 451, 455, 459, 463, 467, 471, 475, 479, 483, 487, 491, 495, 499, 503, 507, 511, 515, 519, 523, 527, 531, 535, 539, 543, 547, 551, 555, 559, 563, 567, 571, 575, 579, 583, 587, 591, 595, 599, 603, 607, 611, 615, 619, 623, 627, 631, 635, 639, 643, 647, 651, 655, 659, 663, 667, 671, 675, 679, 683, 687, 691, 695, 699, 703, 707, 711, 715, 719, 723, 727, 731, 735, 739, 743, 747, 751, 755, 759, 763, 767, 771, 775, 779, 783, 787, 791, 795, 799, 803, 807, 811, 815, 819, 823, 827, 831, 835, 839, 843, 847, 851, 855, 859, 863, 867, 871, 875, 879, 883, 887, 891, 895, 899, 903, 907, 911, 915, 919, 923, 927, 931, 935, 939, 943, 947, 951, 955, 959, 963, 967, 971, 975, 979, 983, 987, 991, 995, 999, 1003, 1007, 1011, 1015, 1019, 1023, 1027, 1031, 1035, 1039, 1043, 1047, 1051, 1055, 1059, 1063, 1067, 1071, 1075, 1079, 1083, 1087, 1091, 1095, 1099, 1103, 1107, 1111, 1115, 1119, 1123, 1127, 1131, 1135, 1139, 1143, 1147, 1151, 1155, 1159, 1163, 1167, 1171, 1175, 1179, 1183, 1187, 1191, 1195, 1199, 1203, 1207, 1211, 1215, 1219, 1223, 1227, 1231, 1235, 1239, 1243, 1247, 1251, 1255, 1259, 1263, 1267, 1271, 1275, 1279, 1283, 1287, 1291, 1295, 1299, 1303, 1307, 1311, 1315, 1319, 1323, 1327, 1331, 1335, 1339, 1343, 1347, 1351, 1355, 1359, 1363, 1367, 1371, 1375, 1379, 1383, 1387, 1391, 1395, 1399, 1403, 1407, 1411, 1415, 1419, 1423, 1427, 1431, 1435, 1439, 1443, 1447, 1451, 1455, 1459, 1463, 1467, 1471, 1475, 1479, 1483, 1487, 1491, 1495, 1499, 1503, 1507, 1511, 1515, 1519, 1523, 1527, 1531, 1535, 1539, 1543, 1547, 1551, 1555, 1559, 1563, 1567, 1571, 1575, 1579, 1583, 1587, 1591, 1595, 1599, 1603, 1607, 1611, 1615, 1619, 1623, 1627, 1631, 1635, 1639, 1643, 1647, 1651, 1655, 1659, 1663, 1667, 1671, 1675, 1679, 1683, 1687, 1691, 1695, 1699, 1703, 1707, 1711, 1715, 1719, 1723, 1727, 1731, 1735, 1739, 1743, 1747, 1751, 1755, 1759, 1763, 1767, 1771, 1775, 1779, 1783, 1787, 1791, 1795, 1799, 1803, 1807, 1811, 1815, 1819, 1823, 1827, 1831, 1835, 1839, 1843, 1847, 1851, 1855, 1859, 1863, 1867, 1871, 1875, 1879, 1883, 1887, 1891, 1895, 1899, 1903, 1907, 1911, 1915, 1919, 1923, 1927, 1931, 1935, 1939, 1943, 1947, 1951, 1955, 1959, 1963, 1967, 1971, 1975, 1979, 1983, 1987, 1991, 1995, 1999, 2003, 2007, 2011, 2015, 2019, 2023, 2027, 2031, 2035, 2039, 2043, 2047, 2051, 2055, 2059, 2063, 2067, 2071, 2075, 2079, 2083, 2087, 2091, 2095, 2099, 2103, 2107, 2111, 2115, 2119, 2123, 2127, 2131, 2135, 2139, 2143, 2147, 2151, 2155, 2159, 2163, 2167, 2171, 2175, 2179, 2183, 2187, 2191, 2195, 2199, 2203, 2207, 2211, 2215, 2219, 2223, 2227, 2231, 2235, 2239, 2243, 2247, 2251, 2255, 2259, 2263, 2267, 2271, 2275, 2279, 2283, 2287, 2291, 2295, 2299, 2303, 2307, 2311, 2315, 2319, 2323, 2327, 2331, 2335, 2339, 2343, 2347, 2351, 2355, 2359, 2363, 2367, 2371, 2375, 2379, 2383, 2387, 2391, 2395, 2399, 2403, 2407, 2411, 2415, 2419, 2423, 2427, 2431, 2435, 2439, 2443, 2447, 2451, 2455, 2459, 2463, 2467, 2471, 2475, 2479, 2483, 2487, 2491, 2495, 2499, 2503, 2507, 2511, 2515, 2519, 2523, 2527, 2531, 2535, 2539, 2543, 2547, 2551, 2555, 2559, 2563, 2567, 2571, 2575, 2579, 2583, 2587, 2591, 2595, 2599, 2603, 2607, 2611, 2615, 2619, 2623, 2627, 2631, 2635, 2639, 2643, 2647, 2651, 2655, 2659, 2663, 2667, 2671, 2675, 2679, 2683, 2687, 2691, 2695, 2699, 2703, 2707, 2711, 2715, 2719, 2723, 2727, 2731, 2735, 2739, 2743, 2747, 2751, 2755, 2759, 2763, 2767, 2771, 2775, 2779, 2783, 2787, 2791, 2795, 2799, 2803, 2807, 2811, 2815, 2819, 2823, 2827, 2831, 2835, 2839, 2843, 2847, 2851, 2855, 2859, 2863, 2867, 2871, 2875, 2879, 2883, 2887, 2891, 2895, 2899, 2903, 2907, 2911, 2915, 291

11,661,000

11, 30 41

THE UNIVERSITY OF CHICAGO

1000 1000 1000

THESE

ST 4 Inc, 1988, 1989.

11-23-1977

3 for USE 2:3-6.

NY 114-461-4571

1-27-6

— 10 —

796 2 ml of 0.1 M NaOH solution.

20. 20 (1988)

TP 569-14334

DST 11,401-11,402

in 30 min (Fig. 1). The

Platz 20

Filed 23

and 26 3/4" x 11 1/4" x 1 1/4"

1. *Chlorophyll a* and *Chlorophyll b* were determined by the method of Lichtenthaler and Whistler (1973).

1200 1000 800 600 400 200 0

ST 3026, 1900, 1901, 1902, 1903, 1904, 1905, 1906, 1907, 1908, 1909, 1910, 1911, 1912, 1913, 1914, 1915, 1916, 1917, 1918, 1919, 1920, 1921, 1922, 1923, 1924, 1925, 1926, 1927, 1928, 1929, 1930, 1931, 1932, 1933, 1934, 1935, 1936, 1937, 1938, 1939, 1940, 1941, 1942, 1943, 1944, 1945, 1946, 1947, 1948, 1949, 1950, 1951, 1952, 1953, 1954, 1955, 1956, 1957, 1958, 1959, 1960, 1961, 1962, 1963, 1964, 1965, 1966, 1967, 1968, 1969, 1970, 1971, 1972, 1973, 1974, 1975, 1976, 1977, 1978, 1979, 1980, 1981, 1982, 1983, 1984, 1985, 1986, 1987, 1988, 1989, 1990, 1991, 1992, 1993, 1994, 1995, 1996, 1997, 1998, 1999, 2000, 2001, 2002, 2003, 2004, 2005, 2006, 2007, 2008, 2009, 2010, 2011, 2012, 2013, 2014, 2015, 2016, 2017, 2018, 2019, 2020, 2021, 2022, 2023, 2024, 2025, 2026, 2027, 2028, 2029, 2030, 2031, 2032, 2033, 2034, 2035, 2036, 2037, 2038, 2039, 2040, 2041, 2042, 2043, 2044, 2045, 2046, 2047, 2048, 2049, 2050, 2051, 2052, 2053, 2054, 2055, 2056, 2057, 2058, 2059, 2060, 2061, 2062, 2063, 2064, 2065, 2066, 2067, 2068, 2069, 2070, 2071, 2072, 2073, 2074, 2075, 2076, 2077, 2078, 2079, 2080, 2081, 2082, 2083, 2084, 2085, 2086, 2087, 2088, 2089, 2090, 2091, 2092, 2093, 2094, 2095, 2096, 2097, 2098, 2099, 2100, 2101, 2102, 2103, 2104, 2105, 2106, 2107, 2108, 2109, 2110, 2111, 2112, 2113, 2114, 2115, 2116, 2117, 2118, 2119, 2120, 2121, 2122, 2123, 2124, 2125, 2126, 2127, 2128, 2129, 2130, 2131, 2132, 2133, 2134, 2135, 2136, 2137, 2138, 2139, 2140, 2141, 2142, 2143, 2144, 2145, 2146, 2147, 2148, 2149, 2150, 2151, 2152, 2153, 2154, 2155, 2156, 2157, 2158, 2159, 2160, 2161, 2162, 2163, 2164, 2165, 2166, 2167, 2168, 2169, 2170, 2171, 2172, 2173, 2174, 2175, 2176, 2177, 2178, 2179, 2180, 2181, 2182, 2183, 2184, 2185, 2186, 2187, 2188, 2189, 2190, 2191, 2192, 2193, 2194, 2195, 2196, 2197, 2198, 2199, 2200, 2201, 2202, 2203, 2204, 2205, 2206, 2207, 2208, 2209, 2210, 2211, 2212, 2213, 2214, 2215, 2216, 2217, 2218, 2219, 2220, 2221, 2222, 2223, 2224, 2225, 2226, 2227, 2228, 2229, 2230, 2231, 2232, 2233, 2234, 2235, 2236, 2237, 2238, 2239, 2240, 2241, 2242, 2243, 2244, 2245, 2246, 2247, 2248, 2249, 2250, 2251, 2252, 2253, 2254, 2255, 2256, 2257, 2258, 2259, 2260, 2261, 2262, 2263, 2264, 2265, 2266, 2267, 2268, 2269, 2270, 2271, 2272, 2273, 2274, 2275, 2276, 2277, 2278, 2279, 2280, 2281, 2282, 2283, 2284, 2285, 2286, 2287, 2288, 2289, 2290, 2291, 2292, 2293, 2294, 2295, 2296, 2297, 2298, 2299, 2300, 2301, 2302, 2303, 2304, 2305, 2306, 2307, 2308, 2309, 2310, 2311, 2312, 2313, 2314, 2315, 2316, 2317, 2318, 2319, 2320, 2321, 2322, 2323, 2324, 2325, 2326, 2327, 2328, 2329, 2330, 2331, 2332, 2333, 2334, 2335, 2336, 2337, 2338, 2339, 2340, 2341, 2342, 2343, 2344, 2345, 2346, 2347, 2348, 2349, 2350, 2351, 2352, 2353, 2354, 2355, 2356, 2357, 2358, 2359, 2360, 2361, 2362, 2363, 2364, 2365, 2366, 2367, 2368, 2369, 2370, 2371, 2372, 2373, 2374, 2375, 2376, 2377, 2378, 2379, 2380, 2381, 2382, 2383, 2384, 2385, 2386, 2387, 2388, 2389, 2390, 2391, 2392, 2393, 2394, 2395, 2396, 2397, 2398, 2399, 2400, 2401, 2402, 2403, 2404, 2405, 2406, 2407, 2408, 2409, 2410, 2411, 2412, 2413, 2414, 2415, 2416, 2417, 2418, 2419, 2420, 2421, 2422, 2423, 2424, 2425, 2426, 2427, 2428, 2429, 2430, 2431, 2432, 2433, 2434, 2435, 2436, 2437, 2438, 2439, 2440, 2441, 2442, 2443, 2444, 2445, 2446, 2447, 2448, 2449, 2450, 2451, 2452, 2453, 2454, 2455, 2456, 2457, 2458, 2459, 2460, 2461, 2462, 2463, 2464, 2465, 2466, 2467, 2468, 2469, 2470, 2471, 2472, 2473, 2474, 2475, 2476, 2477, 2478, 2479, 2480, 2481, 2482, 2483, 2484, 2485, 2486, 2487, 2488, 2489, 2490, 2491, 2492, 2493, 2494, 2495, 2496, 2497, 2498, 2499, 2500, 2501, 2502, 2503, 2504, 2505, 2506, 2507, 2508, 2509, 2510, 2511, 2512, 2513, 2514, 2515, 2516, 2517, 2518, 2519, 2520, 2521, 2522, 2523, 2524, 2525, 2526, 2527, 2528, 2529, 2530, 2531, 2532, 2533, 2534, 2535, 2536, 2537, 2538, 2539, 2540, 2541, 2542, 2543, 2544, 2545, 2546, 2547, 2548, 2549, 2550, 2551, 2552, 2553, 2554, 2555, 2556, 2557, 2558, 2559, 2560, 2561, 2562, 2563, 2564, 2565, 2566, 2567, 2568, 2569, 2570, 2571, 2572, 2573, 2574, 2575, 2576, 2577, 2578, 2579, 2580,

...the fact that the ...

...the ...

[illegible]

1. The first group of people who are likely to be affected by the proposed changes are those who are currently employed in the public sector. This group includes civil servants, teachers, nurses, and other public employees. They will be affected because the proposed changes will likely result in a reduction in public sector employment, as the government seeks to reduce its budget deficit.

LEA Lovington, E. NM Sec 20, T16S, R37E
PENNZOIL UNITED, INC. 1 State "20" Page #3

1-13-69

Continued

LOG TOPS: Anhydrite 2108', Yates 3278',
San Andres 5067', Abo 8466', Wolfcamp
10,056', Pennsylvanian 10,835', Strawn
11,287', Atoka 11,587'

1-16-69

Well Drilled Tight
COMPLETION REPORTED

**NEW MEXICO OIL CONSERVATION COMMISSION
WELL LOCATION AND ACREAGE DEDICATION PLAT**

Form C-102
Supersedes C-128
Effective 1-1-65

All distances must be from the outer boundaries of the Section.

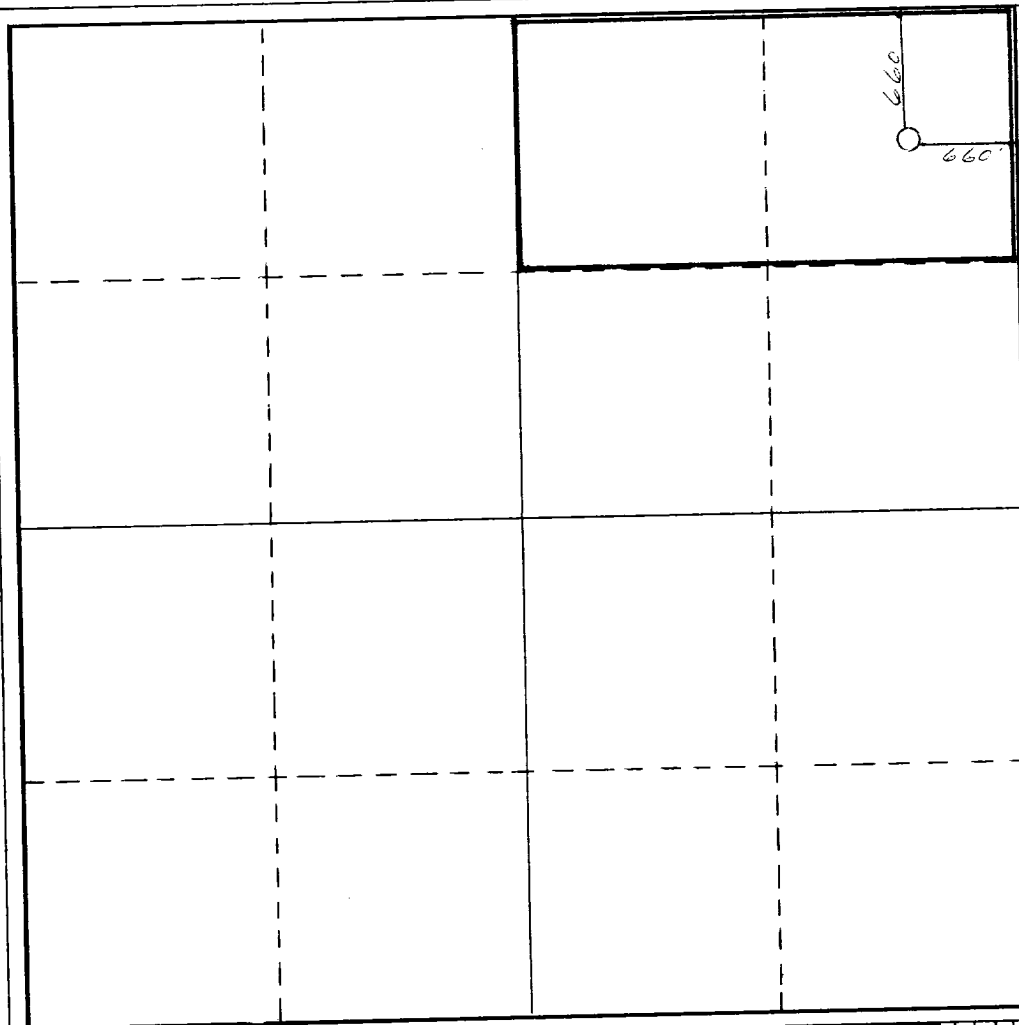
Operator Pennzoil United, Inc.			Lease State "C"		Well No. 1
Unit Letter A	Section 20	Township 16-South	Range 37-East	County Lea	
Actual Footage Location of Well: 660 feet from the North line and 660 feet from the East line					
Ground Level Elev. 3820.6	Producing Formation Pennsylvanian		Pool Lovington Northeast Penn		Dedicated Acreage: N/2 NE/4 80 Acres

1. Outline the acreage dedicated to the subject well by colored pencil or hachure marks on the plat below.
2. If more than one lease is dedicated to the well, outline each and identify the ownership thereof (both as to working interest and royalty).
3. If more than one lease of different ownership is dedicated to the well, have the interests of all owners been consolidated by communitization, unitization, force-pooling, etc?

☐ Yes ☐ No If answer is "yes," type of consolidation _____

If answer is "no," list the owners and tract descriptions which have actually been consolidated. (Use reverse side of this form if necessary.) _____

No allowable will be assigned to the well until all interests have been consolidated (by communitization, unitization, forced-pooling, or otherwise) or until a non-standard unit, eliminating such interests, has been approved by the Commission.



CERTIFICATION

I hereby certify that the information contained herein is true and complete to the best of my knowledge and belief.

Name *B. A. McClain*
Position **Petroleum Engineer**
Company **Pennzoil United, Inc.**

Date
8-21-69

I hereby certify that the well location shown on this plat was plotted from field notes of actual surveys made by me or under my supervision, and that the same is true and correct to the best of my knowledge and belief.

Date Surveyed _____

Registered Professional Engineer
and/or Land Surveyor

Certificate No. _____