

EXICO OIL CONSERVATION CO. IS
WELL LOCATION AND ACREAGE DEDICATION PLAT

Form C-102
Supersedes C-128
Effective 1-1-65

All distances must be from the outer boundaries of the Section.

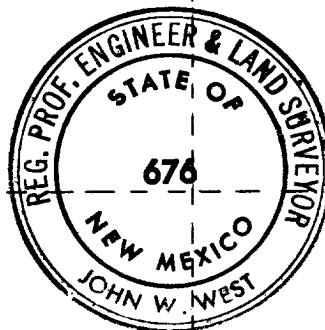
Operator JAKE L. HAMON,			Lease STATE K-33		Well No. 2
Unit Letter N	Section 30	Township 16 SOUTH	Range 36 EAST	County LEA	
Actual Footage Location of Well: 554 feet from the SOUTH line and 1983.7 feet from the WEST line					
Ground Level Elev. 3929.2	Producing Formation DEVONIAN		Pool SHOE BAR EAST DEVONIAN		Dedicated Acreage: S1SW1 77 Acres

1. Outline the acreage dedicated to the subject well by colored pencil or hachure marks on the plat below.
2. If more than one lease is dedicated to the well, outline each and identify the ownership thereof (both as to working interest and royalty).
3. If more than one lease of different ownership is dedicated to the well, have the interests of all owners been consolidated by communitization, unitization, force-pooling, etc?

☐ Yes ☐ No If answer is "yes," type of consolidation _____

If answer is "no," list the owners and tract descriptions which have actually been consolidated. (Use reverse side of this form if necessary.) _____

No allowable will be assigned to the well until all interests have been consolidated (by communitization, unitization, forced-pooling, or otherwise) or until a non-standard unit, eliminating such interests, has been approved by the Commission.



CERTIFICATION

I hereby certify that the information contained herein is true and complete to the best of my knowledge and belief.

Name **John W. West**
Position

AGENT

Company
JAKE L. HAMON

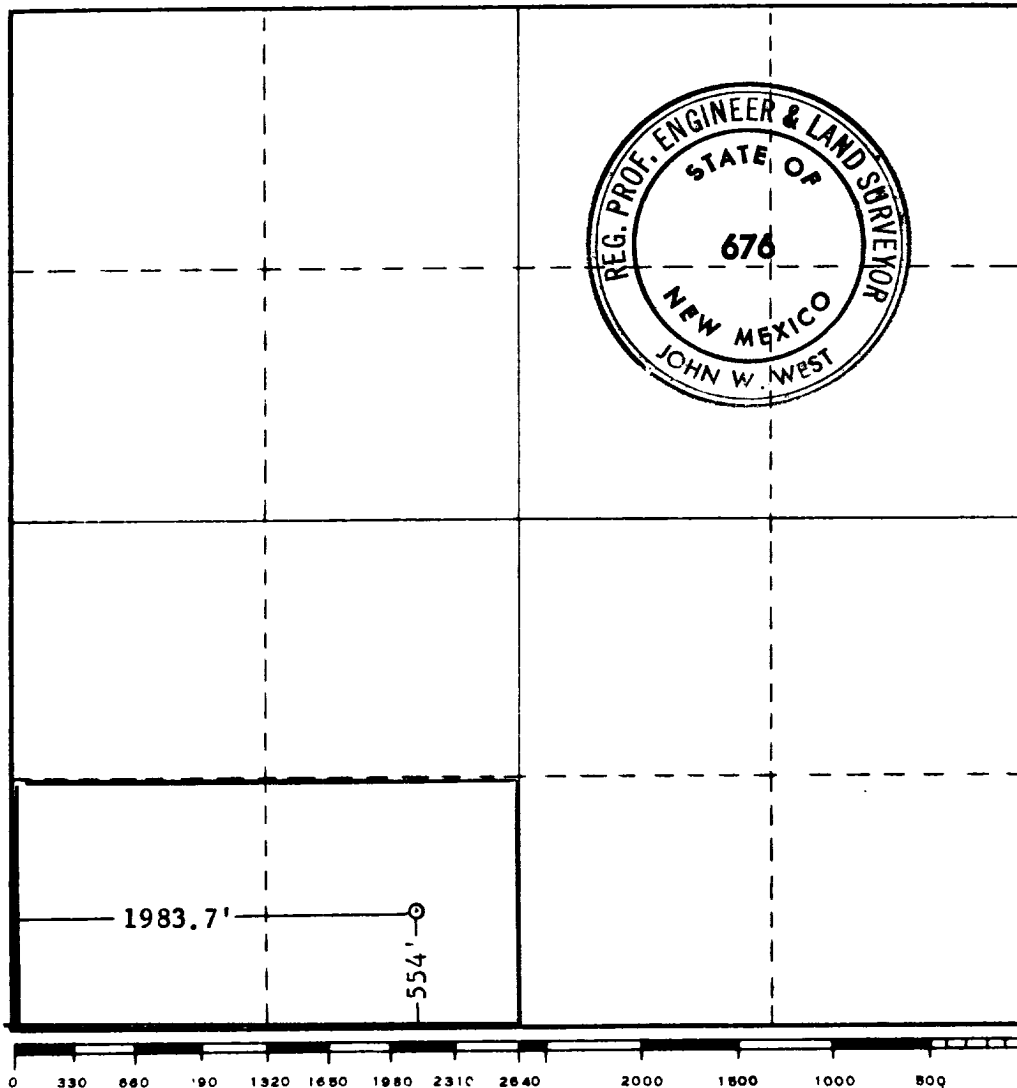
Date
1-15-1969

I hereby certify that the well location shown on this plat was plotted from field notes of actual surveys made by me or under my supervision, and that the same is true and correct to the best of my knowledge and belief.

Date Surveyed
1-15-1969

Registered Professional Engineer and/or Land Surveyor

John W. West
Certificate No. **676**



11