

UNITED STATES  
DEPARTMENT OF THE INTERIOR  
GEOLOGICAL SURVEY

## APPLICATION FOR PERMIT TO DRILL, DEEPEN, OR PLUG BACK

1a. TYPE OF WORK DRILL <input checked="" type="checkbox"/> DEEPEN <input type="checkbox"/> PLUG BACK <input type="checkbox"/>			5. LEASE DESIGNATION AND SERIAL NO. <b>LC-057210</b>	
b. TYPE OF WELL OIL WELL <input checked="" type="checkbox"/> GAS WELL <input type="checkbox"/> OTHER <input type="checkbox"/>			8. IF INDIAN, ALLOTTEE OR TRIBE NAME	
2. NAME OF OPERATOR <b>Continental Oil Company</b>			7. UNIT AGREEMENT NAME <b>MCA</b>	
3. ADDRESS OF OPERATOR <b>Box 460 Hobbs, N. Mex.</b>			8. FARM OR LEASE NAME <b>MCA Unit</b>	
4. LOCATION OF WELL (Report location clearly and in accordance with any State requirements.) At surface <b>810' FSL + 2080' FEL of Sec 28</b> At proposed prod. zone <b>Same</b>			9. WELL NO. <b>254</b>	
14. DISTANCE IN MILES AND DIRECTION FROM NEAREST TOWN OR POST OFFICE*			10. FIELD AND POOL, OR WILDCAT <b>Mali. G-5A</b>	
15. DISTANCE FROM PROPOSED* LOCATION TO NEAREST PROPERTY OR LEASE LINE, FT. (Also to nearest drlg. unit line, if any)			11. SEC., T., R., M., OR BLK AND SURVEY OR AREA <b>Sec 28, T-17S, R-32E</b>	
16. NO. OF ACRES IN LEASE <b>7853</b>			12. COUNTY OR PARISH <b>Lea</b>	
17. NO. OF ACRES ASSIGNED TO THIS WELL <b>40</b>			13. STATE <b>N. Mex.</b>	
18. DISTANCE FROM PROPOSED* LOCATION TO NEAREST WELL, DRILLING, COMPLETED, OR APPLIED FOR, ON THIS LEASE, FT.			20. ROTARY OR CABLE TOOLS <b>Rotary</b>	
19. PROPOSED DEPTH <b>4100</b>			22. APPROX. DATE WORK WILL START* <b>4-27-70</b>	
21. ELEVATIONS (Show whether DF, RT, GR, etc.) <b>Cst. DF 3945</b>				

## PROPOSED CASING AND CEMENTING PROGRAM

SIZE OF HOLE	SIZE OF CASING	WEIGHT PER FOOT	SETTING DEPTH	QUANTITY OF CEMENT
12 1/4	8 5/8	24	925	600 sx Circulated
7 7/8	5 1/2	14	4100	250 sx

It is proposed to drill a straight hole to TD and complete this well as a San Andres producing oil well.

IN ABOVE SPACE DESCRIBE PROPOSED PROGRAM: If proposal is to deepen or plug back, give data on present productive zone and proposed new productive zone. If proposal is to drill or deepen directionally, give pertinent data on subsurface locations and measured and true vertical depths. Give blowout preventer program, if any.

24. SIGNED M. E. Franklin TITLE Adm. Section Chief DATE 4-13-70

(This space for Federal or State office use)

PERMIT NO. \_\_\_\_\_

APPROVED BY \_\_\_\_\_

APPROVED BY \_\_\_\_\_

TITLE \_\_\_\_\_

CONDITIONS OF APPROVAL, IF ANY:

DATE \_\_\_\_\_

**APPROVED**

APR 14 1970

ARTHUR R. BROWN  
DISTRICT ENGINEER

USGS 5, MCA Partners

\*See Instructions On Reverse Side

**RECEIVED**

**APR 21 1970**

**OIL CONSERVATION COMM.  
HOBBS, N. M.**

NEW MEXICO OIL CONSERVATION COMMISSION  
WELL LOCATION AND ACREAGE DEDICATION PLAT

Form C-102  
Supersedes C-128  
Effective 1-1-65

All distances must be from the outer boundaries of the Section

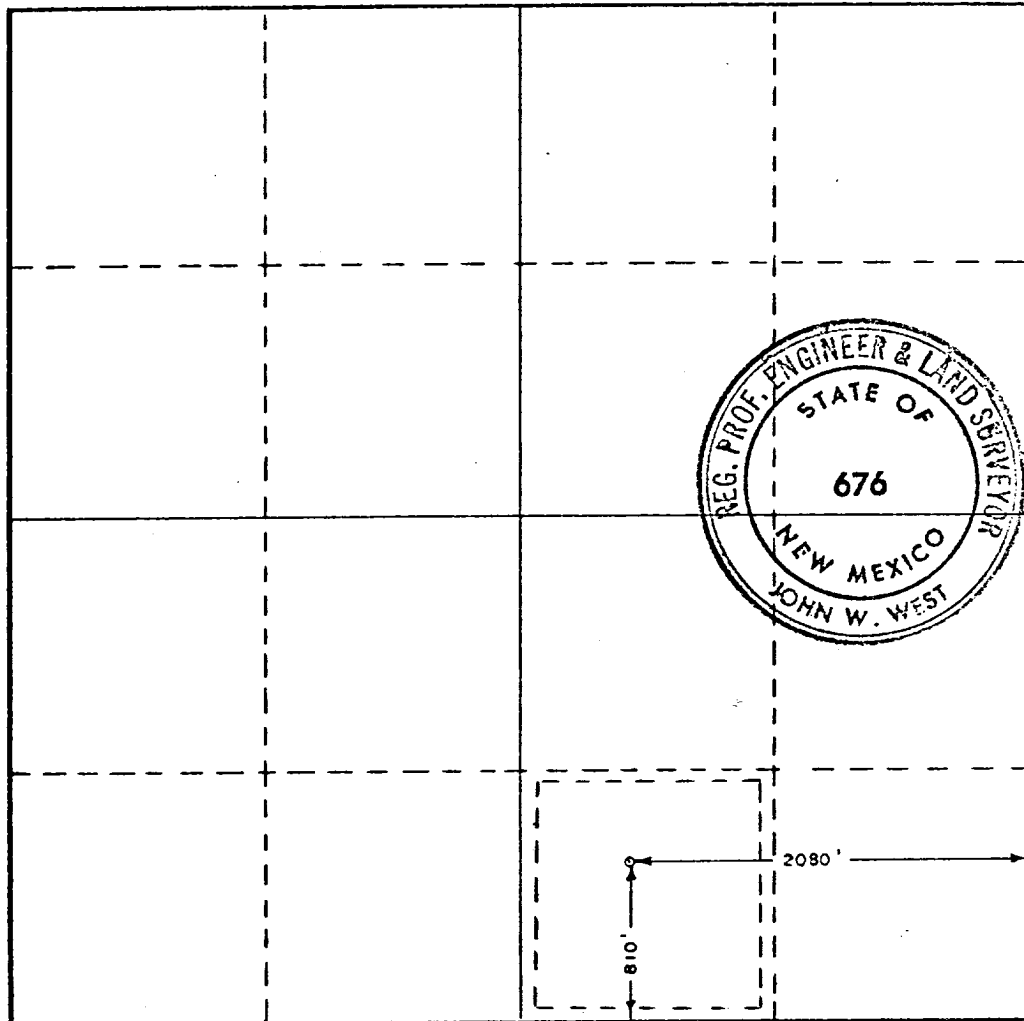
Operator <b>CONTINENTAL OIL COMPANY</b>			Lease <b>M C A UNIT</b>		Well No. <b>254</b>
Unit Letter <b>O</b>	Section <b>28</b>	Township <b>17 SOUTH</b>	Range <b>32 EAST</b>	County <b>LEA</b>	
Actual Footage Location of Well: <b>810</b> feet from the <b>SOUTH</b> line and <b>2080</b> feet from the <b>EAST</b> line					
Ground Level Elev. <b>3944'</b>	Producing Formation		Pool		Dedicated Acreage:  Acres

1. Outline the acreage dedicated to the subject well by colored pencil or hachure marks on the plat below.
2. If more than one lease is dedicated to the well, outline each and identify the ownership thereof (both as to working interest and royalty).
3. If more than one lease of different ownership is dedicated to the well, have the interests of all owners been consolidated by communitization, unitization, force-pooling, etc?

☐ Yes ☐ No If answer is "yes," type of consolidation \_\_\_\_\_

If answer is "no," list the owners and tract descriptions which have actually been consolidated. (Use reverse side of this form if necessary.) \_\_\_\_\_

No allowable will be assigned to the well until all interests have been consolidated (by communitization, unitization, forced-pooling, or otherwise) or until a non-standard unit, eliminating such interests, has been approved by the Commission.



CERTIFICATION

I hereby certify that the information contained herein is true and complete to the best of my knowledge and belief.

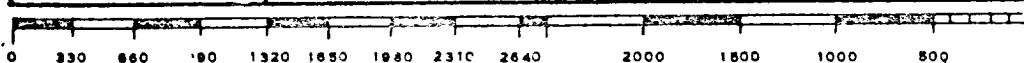
Name *M. E. Spahr*  
Position *Adm. Section Chief*  
Company *Continental Oil Co.*  
Date *4-13-70*

I hereby certify that the well location shown on this plat was plotted from field notes of actual surveys made by me or under my supervision, and that the same is true and correct to the best of my knowledge and belief.

Date Surveyed  
**APRIL 2, 1970**

Registered Professional Engineer  
and/or Land Surveyor

*John W. West*  
Certificate No. **676**



RECEIVED

APR 21 1970

OIL CONSERVATION COMM.  
WASH. D. C.