

UNITED STATES  
DEPARTMENT OF THE INTERIOR  
GEOLOGICAL SURVEY

## APPLICATION FOR PERMIT TO DRILL, DEEPEN, OR PLUG BACK

## 12. TYPE OF WORK

DRILL ☒DEEPEN ☐PLUG BACK ☐

## 13. TYPE OF WELL

OIL  
WELL ☒GAS  
WELL ☐OTHER ☐SINGLE  
ZONE ☒MULTIPLE  
ZONE ☐

## 2. NAME OF OPERATOR

Continental Oil Company.

## 3. ADDRESS OF OPERATOR

Box 460, Hobbs, New Mexico 88240

## 4. LOCATION OF WELL. (Report location clearly and in accordance with any State requirements.)\*

At surface

1410' FNL + 2550' FNL, Sec. 28, T. 17S, R. 32E 1970

At proposed prod. zone

Same.

## 14. DISTANCE IN MILES AND DIRECTION FROM NEAREST TOWN OR POST OFFICE\*

U. S. GEOLOGICAL SURVEY  
HOBBS, NEW MEXICO

## 12. COUNTY OR PARISH 13. STATE

Lea N. Mex.

## 15. DISTANCE FROM PROPOSED\*

LOCATION TO NEAREST  
PROPERTY OR LEASE LINE, FT.  
(Also to nearest drlg. unit line, if any)

## 16. NO. OF ACRES IN LEASE.

7853.

17. NO. OF ACRES ASSIGNED  
TO THIS WELL.

40 (40' with MCA Unit No. 117)

18. DISTANCE FROM PROPOSED LOCATION\*  
TO NEAREST WELL, DRILLING, COMPLETED,  
OR APPLIED FOR, ON THIS LEASE, FT.

## 19. PROPOSED DEPTH

4100'

## 20. ROTARY OR CABLE TOOLS

Rotary

## 21. ELEVATIONS (Show whether DF, RT, GR, etc.)

## 22. APPROX. DATE WORK WILL START\*

8-10-70

## 23.

## PROPOSED CASING AND CEMENTING PROGRAM

SIZE OF HOLE	SIZE OF CASING	WEIGHT PER FOOT	SETTING DEPTH	QUANTITY OF CEMENT
12 1/4	8 5/8	20	820	350 sy Circulated
7 1/8	5 1/2	14	4100	125 sy

It is proposed to drill a straight hole to TD and complete this well as a San Andres producing oil well.

IN ABOVE SPACE DESCRIBE PROPOSED PROGRAM: If proposal is to deepen or plug back, give data on present productive zone and proposed new productive zone. If proposal is to drill or deepen directionally, give pertinent data on subsurface locations and measured and true vertical depths. Give blowout preventer program, if any.

## 24.

SIGNED

M. E. Yeabley

TITLE

Adm. Sec.

DATE

7-29-70

(This space for Federal or State office use)

PERMIT NO.

APPROVAL DATE

AUG 3 1970

ARTHUR R. BROWN  
DISTRICT ENGINEER

APPROVED BY

TITLE

CONDITIONS OF APPROVAL, IF ANY:

USGS-5  
MCA Partners  
File

RECEIVED

AUG 11 1970

OIL CONSERVATION COMM.  
HOBBS, N. M.

**NEW MEXICO OIL CONSERVATION COMMISSION  
WELL LOCATION AND ACREAGE DEDICATION PLAT**

Form C-102  
Supersedes C-128  
Effective 1-1-65

All distances must be from the outer boundaries of the Section.

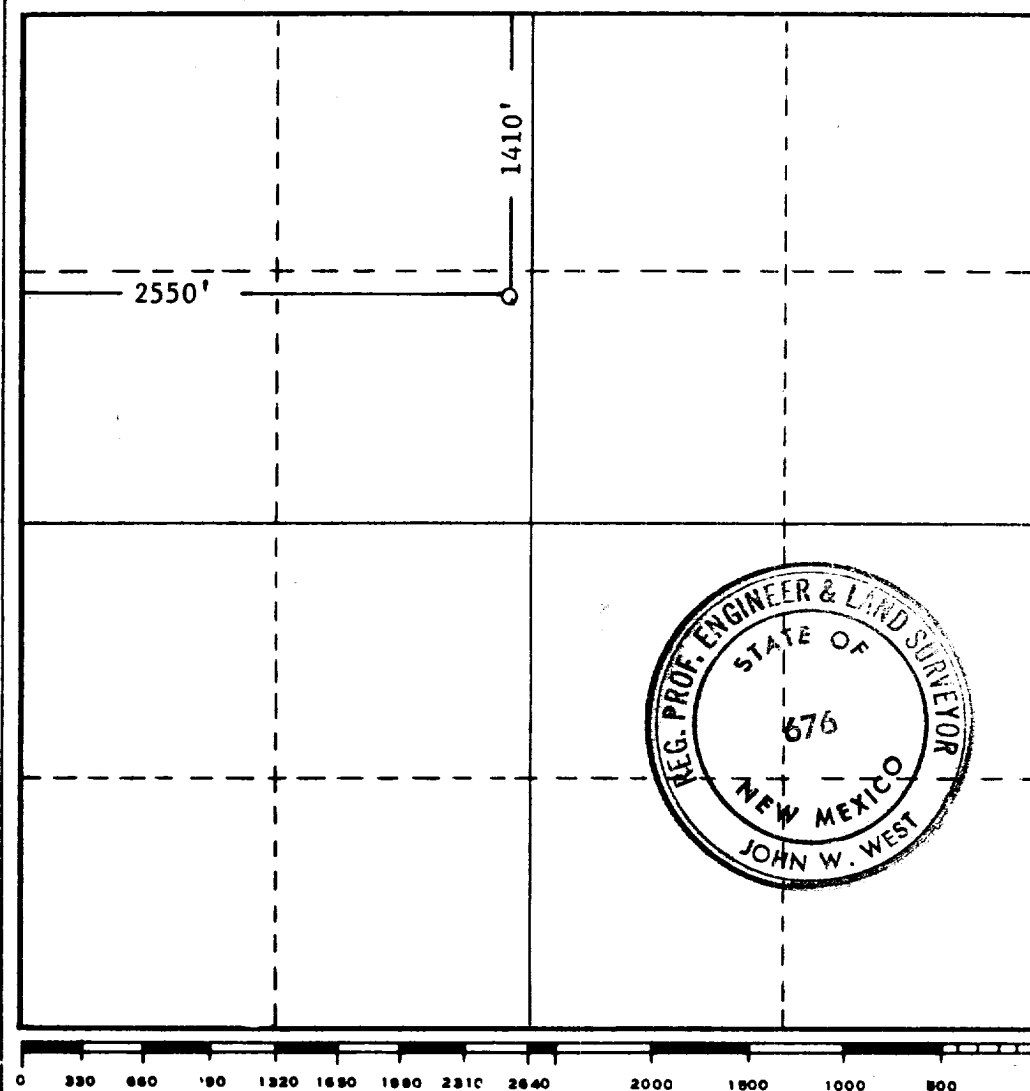
Operator <b>CONTINENTAL OIL COMPANY</b>			Lease <b>MCA UNIT</b>		Well No. <b>260</b>
Unit Letter <b>F</b>	Section <b>28</b>	Township <b>17 SOUTH</b>	Range <b>32 EAST</b>	County <b>LEA</b>	
Actual Footage Location of Well: <b>1410</b> feet from the <b>NORTH</b> line and <b>2550</b> feet from the <b>WEST</b> line					
Ground Level Elev.	Producing Formation	Pool		Dedicated Acreage:  Acres	

1. Outline the acreage dedicated to the subject well by colored pencil or hachure marks on the plat below.
2. If more than one lease is dedicated to the well, outline each and identify the ownership thereof (both as to working interest and royalty).
3. If more than one lease of different ownership is dedicated to the well, have the interests of all owners been consolidated by communitization, unitization, force-pooling, etc?

☐ Yes    ☐ No    If answer is "yes," type of consolidation \_\_\_\_\_

If answer is "no," list the owners and tract descriptions which have actually been consolidated. (Use reverse side of this form if necessary.) \_\_\_\_\_

No allowable will be assigned to the well until all interests have been consolidated (by communitization, unitization, forced-pooling, or otherwise) or until a non-standard unit, eliminating such interests, has been approved by the Commission.



**CERTIFICATION**

*I hereby certify that the information contained herein is true and complete to the best of my knowledge and belief.*

Name
Position
Company
Date

*I hereby certify that the well location shown on this plat was plotted from field notes of actual surveys made by me or under my supervision, and that the same is true and correct to the best of my knowledge and belief.*

Date Surveyed <b>7-15-1970</b>
Registered Professional Engineer and/or Land Surveyor  <i>John W West</i>
Certificate No. <b>676</b>

RECEIVED  
AUG 11 1970  
OIL CONSERVATION DIVISION  
WASHINGTON, D.C.