

| | |
|------------------------|--|
| NO. OF COPIES RECEIVED | |
| DISTRIBUTION | |
| SANTA FE | |
| FILE | |
| U.S.G.S. | |
| LAND OFFICE | |
| OPERATOR | |

NEW MEXICO OIL CONSERVATION COMMISSION

Form C-101
Revised 1-1-65 17 22/15

5A. Indicate Type of Lease
STATE FEE

5. State Oil & Gas Lease No.
N.M. 2-K-6666

APPLICATION FOR PERMIT TO DRILL, DEEPEN, OR PLUG BACK

1a. Type of Work
b. Type of Well DRILL DEEPEN PLUG BACK
OIL WELL GAS WELL OTHER SINGLE ZONE MULTIPLE ZONE

2. Name of Operator
INEXCO OIL COMPANY

3. Address of Operator
106 Mid-America Bldg., Midland, Texas 79701

4. Location of Well
UNIT LETTER D LOCATED 660 FEET FROM THE N LINE
AND 660 FEET FROM THE W LINE OF SEC. 28 TWP. 16S RGE. 33E NMPM

7. Unit Agreement Name

8. Farm or Lease Name
Pan Am State

9. Well No.
1

10. Field and Pool, or Wildcat
Wildcat

12. County
Lea

19. Proposed Depth
10,800

19A. Formation
Wolfcamp

20. Rotary or C.T.
Rotary

21. Elevations (Show whether DF, RT, etc.)
GL 4223.8

21A. Kind & Status Plug. Bond
Blanket: 19-0130-

21B. Drilling Contractor
Marcum Drlg. Co.

22. Approx. Date Work will start
11-4-70

23. 2043-70
PROPOSED CASING AND CEMENT PROGRAM

| SIZE OF HOLE | SIZE OF CASING | WEIGHT PER FOOT | SETTING DEPTH | SACKS OF CEMENT | EST. TOP |
|--------------|----------------|-----------------|---------------|-----------------|-----------|
| 17-1/2 | 13-3/8 | 48# | 300 | 350sx | Circulate |
| 12-1/4 | 8-5/8 | 32# | 4500 | 1050 sx | 2000 |
| 7-7/8 | 4-1/2 | 13.5# | 10,800' | 625 sx | 9000 |

To drill an exploratory well into the Lower Wolfcamp formation and complete as an oil well. Blowout preventors will consist of Hydril, pipe rams and blind rams.

2-2-71

1338

IN ABOVE SPACE DESCRIBE PROPOSED PROGRAM; IF PROPOSAL IS TO DEEPEN OR PLUG BACK, GIVE DATA ON PRESENT PRODUCTIVE ZONE AND PROPOSED NEW PRODUCTIVE ZONE. GIVE BLOWOUT PREVENTER PROGRAM, IF ANY.

I hereby certify that the information above is true and complete to the best of my knowledge and belief.

Signed Deborah G. Mahoney Title Manager, Production & Drlg. Date 10-30-70

(This space for State Use)

APPROVED BY [Signature] TITLE SUPERVISOR DATE 10-30-70

CONDITIONS OF APPROVAL, IF ANY:

RECEIVED

103-

OFFICE OF THE ATTORNEY GENERAL

ALBANY, N. Y.

**NEW MEXICO OIL CONSERVATION COMMISSION
WELL LOCATION AND ACREAGE DEDICATION PLAT**

Form C-102
Supersedes C-128
Effective 1-1-65

All distances must be from the outer boundaries of the Section.

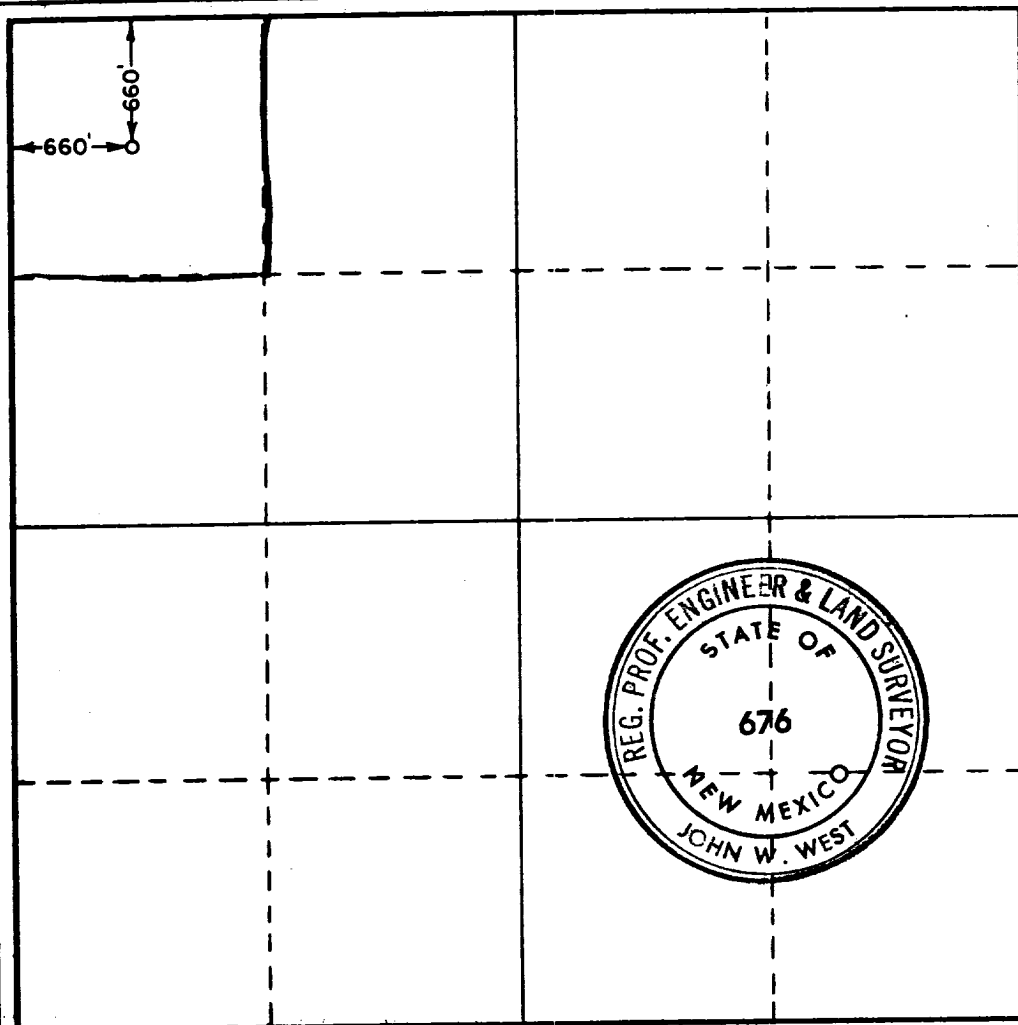
| | | | | |
|--|---|------------------------------|---------------------------------------|----------------------|
| Operator INEXCO OIL CORP. | | Lease PAN AM STATE | | Well No. 1 |
| Unit Letter D | Section 28 | Township 16 SOUTH | Range 33 EAST | County LEA |
| Actual Footage Location of Well: 660 feet from the NORTH line and 660 feet from the WEST line | | | | |
| Ground Level Elev. 4223.8 | Producing Formation LWR. WOLFCAMP | Pool WILDCAT | Dedicated Acreage: 40 Acres | |

1. Outline the acreage dedicated to the subject well by colored pencil or hachure marks on the plat below.
2. If more than one lease is dedicated to the well, outline each and identify the ownership thereof (both as to working interest and royalty).
3. If more than one lease of different ownership is dedicated to the well, have the interests of all owners been consolidated by communitization, unitization, force-pooling, etc?

Yes No If answer is "yes," type of consolidation _____

If answer is "no," list the owners and tract descriptions which have actually been consolidated. (Use reverse side of this form if necessary.) _____

No allowable will be assigned to the well until all interests have been consolidated (by communitization, unitization, forced-pooling, or otherwise) or until a non-standard unit, eliminating such interests, has been approved by the Commission.



CERTIFICATION

I hereby certify that the information contained herein is true and complete to the best of my knowledge and belief.

Bernard J. Mahony
Name

Bernard J. Mahony
Position
Manager, Prod. & Drlg.

Company
INEXCO OIL COMPANY

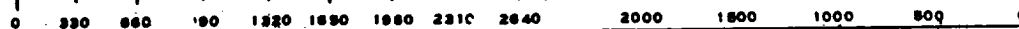
Date
10-30-70

I hereby certify that the well location shown on this plat was plotted from field notes of actual surveys made by me or under my supervision, and that the same is true and correct to the best of my knowledge and belief.

Date Surveyed
OCTOBER 27, 1970

Registered Professional Engineer
and/or Land Surveyor

John W. West
Certificate No. **676**



113

113

113