

UNITED STATES
DEPARTMENT OF THE INTERIOR
GEOLOGICAL SURVEY

SUBMIT IN TRIPLICATE*
(Other instruct on reverse side)

Form approved.
Budget Bureau No. 42-11425.

APPLICATION FOR PERMIT TO DRILL, DEEPEN, OR PLUG BACK

1a. TYPE OF WORK
DRILL ☒ DEEPEN ☐ PLUG BACK ☐

b. TYPE OF WELL
OIL WELL ☒ GAS WELL ☐ OTHER ☐ SINGLE ZONE ☐ MULTIPLE ZONE ☐

2. NAME OF OPERATOR
Continental Oil Company

3. ADDRESS OF OPERATOR
P.O. Box 460, Hobbs, N.M.

4. LOCATION OF WELL (Report location clearly and in accordance with any State requirements.)
At surface *1345' FSL + 2615' FSL of Sec. 20, T-17S R-32E, Lea Co., N.M. Unorthodox location approved*
At proposed prod. zone *Same*

14. DISTANCE IN MILES AND DIRECTION FROM NEAREST TOWN OR POST OFFICE*

15. DISTANCE FROM PROPOSED* LOCATION TO NEAREST PROPERTY OR LEASE LINE, FT. (Also to nearest drg. unit line, if any)

16. NO. OF ACRES IN LEASE
7853

17. NO. OF ACRES ASSIGNED TO THIS WELL
4010 with MCA Unit #6.3

18. DISTANCE FROM PROPOSED LOCATION* TO NEAREST WELL, DRILLING, COMPLETED, OR APPLIED FOR, ON THIS LEASE, FT.

19. PROPOSED DEPTH
4110'

20. ROTARY OR CABLE TOOLS
Rotary

21. ELEVATIONS (Show whether DF, RT, GR, etc.)
Elev. GL 3975'

22. APPROX. DATE WORK WILL START*
3-8-71

5. LEASE DESIGNATION AND SERIAL NO.
LC-029405 (4)

6. IF INDIAN, ALLOTTEE OR TRIBE NAME

7. UNIT AGREEMENT NAME
MCA Unit Repl.

8. FARM OR LEASE NAME
MCA Unit

9. WELL NO.
266

10. FIELD AND POOL, OR WILDCAT
Trinity-SA Repl.

11. SEC., T., R., M., OR BLK AND SURVEY OR AREA
Sec. 20, T-17S R-32E

12. COUNTY OR PARISH
Lea

13. STATE
N.M.

PROPOSED CASING AND CEMENTING PROGRAM

SIZE OF HOLE	SIZE OF CASING	WEIGHT PER FOOT	SETTING DEPTH	QUANTITY OF CEMENT
<i>12 1/4"</i>	<i>8 3/4"</i>	<i>20#</i>	<i>700'</i>	<i>325 cu ft Class "C" Cement</i>
<i>7 7/8"</i>	<i>5 1/2"</i>	<i>14#</i>	<i>4110'</i>	<i>250 cu ft Class "C" Cement</i>

It is proposed to drill a straight hole To TD and complete this well as a Grayburg San andrew producing oil well.

NSL 482

IN ABOVE SPACE DESCRIBE PROPOSED PROGRAM: If proposal is to deepen or plug back, give data on present productive zone and proposed new productive zone. If proposal is to drill or deepen directionally, give pertinent data on subsurface locations and measured and true vertical depths. Give blowout preventer program, if any.

21. SIGNED *M. E. Speakey* TITLE *Administrative Supervisor* DATE *1-22-71*
(This space for Federal or State office use)

PERMIT NO.

APPROVED BY

CONDITIONS OF APPROVAL, IF ANY:

USGS (5) MCA (3) File

APPROVAL DATE

APPROVED

JAN 25 1971

ARTHUR R. BROWN
DISTRICT ENGINEER

*See Instructions On Reverse Side

RECEIVED

JAN 23 1971

U.S. CONSERVATION COMMISSION
WASHINGTON, D.C.

NEW MEXICO OIL CONSERVATION COMMISSION
WELL LOCATION AND ACREAGE DEDICATION PLAT

Form C-102
Supersedes C-128
Effective 1-1-65

All distances must be from the outer boundaries of the Section

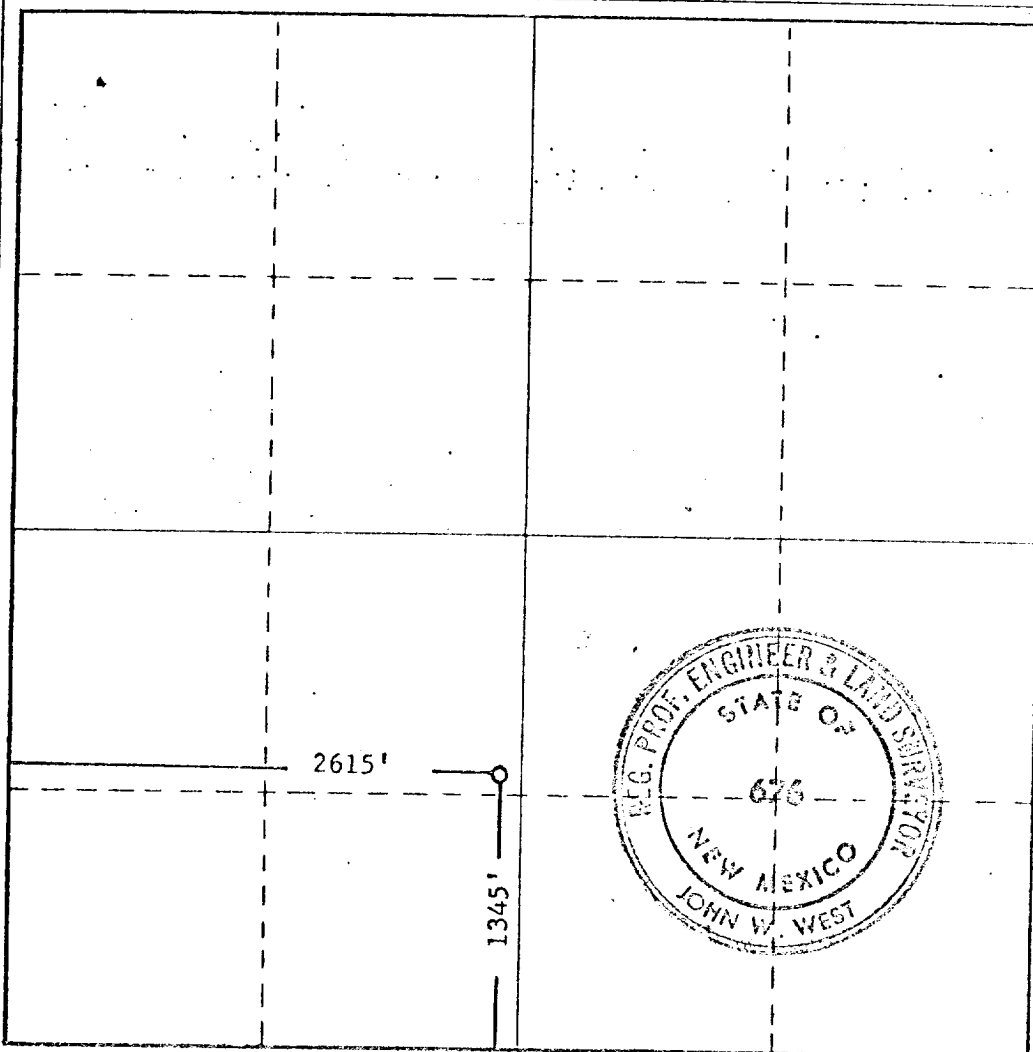
Operator CONTINENTAL OIL COMPANY			Lease MCA UNIT		Well No. 266
Unit Letter K	Section 20	Township 17 SOUTH	Range 32 EAST	County LEA	
Actual Footage Location of Well: 1345 feet from the SOUTH line and 2615 feet from the WEST line					
Ground Level Elev.	Producing Formation	Pool	Dedicated Acreage		

1. Outline the acreage dedicated to the subject well by colored pencil or hachure marks on the plat below.
2. If more than one lease is dedicated to the well, outline each and identify the ownership thereof (both as to working interest and royalty).
3. If more than one lease of different ownership is dedicated to the well, have the interests of all owners been consolidated by communitization, unitization, force-pooling, etc?

☐ Yes ☐ No If answer is "yes," type of consolidation _____

If answer is "no," list the owners and tract descriptions which have actually been consolidated. (Use reverse side of this form if necessary.) _____

No allowable will be assigned to the well until all interests have been consolidated (by communitization, unitization, forced-pooling, or otherwise) or until a non-standard unit, eliminating such interests, has been approved by the Commission.



CERTIFICATION

I hereby certify that the information contained herein is true and complete to the best of my knowledge and belief.

Name M. E. Yalley
Position Administrative Assistant
Company Continental Oil Co.
Date 1-22-71

I hereby certify that the well location shown on this plat was plotted from field notes of actual surveys made by me or under my supervision, and that the same is true and correct to the best of my knowledge and belief.

Date Surveyed
1-14-1971

Registered Professional Engineer and/or Land Surveyor

John W. West
Certificate No. **676**

0 330 650 970 1320 1650 1980 2310 2640 2000 1500 1000 500 0

RECEIVED

JAN 20 1971

OIL CONSERVATION COM.
HOUSTON, TEX.