

UNITED STATES  
DEPARTMENT OF THE INTERIOR  
GEOLOGICAL SURVEY

SUBMIT IN TRIPLICATE\*  
(Other instructions on  
reverse side)

COPY TO O. C. C.

Form approved.  
Budget Bureau No. 42-R1425.

APPLICATION FOR PERMIT TO DRILL, DEEPEN OR PLUG BACK

1a. TYPE OF WORK  
DRILL ☒ DEEPEN ☐ PLUG BACK ☐

b. TYPE OF WELL  
OIL WELL ☒ GAS WELL ☐ OTHER ☐

2. NAME OF OPERATOR  
Continental Oil Company

3. ADDRESS OF OPERATOR  
Box 460 Hobbs, New Mexico

4. LOCATION OF WELL (Report location clearly and in accordance with any State requirements.)  
At surface  
1295' FWL and 2615' FWL of Sec 27  
At proposed prod. zone  
Same

14. DISTANCE IN MILES AND DIRECTION FROM NEAREST TOWN OR POST OFFICE\*

15. DISTANCE FROM PROPOSED\*  
LOCATION TO NEAREST  
PROPERTY OR LEASE LINE, FT.  
(Also to nearest drlg. unit line, if any)

16. NO. OF ACRES IN LEASE  
785.3

17. NO. OF ACRES ASSIGNED  
TO THIS WELL  
40

18. DISTANCE FROM PROPOSED LOCATION\*  
TO NEAREST WELL, DRILLING, COMPLETED,  
OR APPLIED FOR, ON THIS LEASE, FT.

19. PROPOSED DEPTH  
4185'

20. ROTARY OR CABLE TOOLS  
Rotary

21. ELEVATIONS (Show whether DF, RT, GR, etc.)  
3991 est df

22. APPROX. DATE WORK WILL START\*  
Aug 4, 1971

5. LEASE DESIGNATION AND SERIAL NO.  
LC 658699

6. IF INDIAN, ALLOTTEE OR TRIBE NAME

7. UNIT AGREEMENT NAME  
MCA

8. FARM OR LEASE NAME  
MCA Unit

9. WELL NO.  
282

10. FIELD AND POOL, OR WILDCAT  
MCA G-SA Rpm

11. SEC., T., R., M., OR BLK  
AND SURVEY OR AREA  
Sec 27, T-115, R-32E

12. COUNTY OR PARISH  
Lea

13. STATE  
N. Mex

PROPOSED CASING AND CEMENTING PROGRAM

SIZE OF HOLE	SIZE OF CASING	WEIGHT PER FOOT	SETTING DEPTH	QUANTITY OF CEMENT
12 1/4"	8 1/2"	20 #	900'	900 SKS - Circ
7 1/2"	5 1/2"	14 #	4185'	400 SKS

It is proposed to drill a straight hole  
to 4185' and complete as a Grayburg-Sonando  
producer.

Unorthodox location of this well was  
approved under NMOC admin order NSL-512.

IN ABOVE SPACE DESCRIBE PROPOSED PROGRAM: If proposal is to deepen or plug back, give data on present productive zone and proposed new productive zone. If proposal is to drill or deepen directionally, give pertinent data on subsurface locations and measured and true vertical depths. Give blowout preventer program, if any.

24. SIGNED [Signature] TITLE Admin Assistant DATE 8-3-71

(This space for Federal or State office use)

PERMIT NO. \_\_\_\_\_ APPROVAL DATE AUG 3 1971

APPROVED BY \_\_\_\_\_ TITLE ARTHUR R. BROWN DATE \_\_\_\_\_  
CONDITIONS OF APPROVAL, IF ANY: DISTRICT ENGINEER

USGSC(5) MCA(3) File

**RECEIVED**

**AUG 10 1971**

**OIL CONSERVATION COMM.  
HOBBS, N. M.**

NEW MEXICO OIL CONSERVATION COMMISSION  
WELL LOCATION AND ACREAGE DEDICATION PLAT

Form C-162  
Supersedes C-128  
Effective 1-1-65

All distances must be from the outer boundaries of the Section

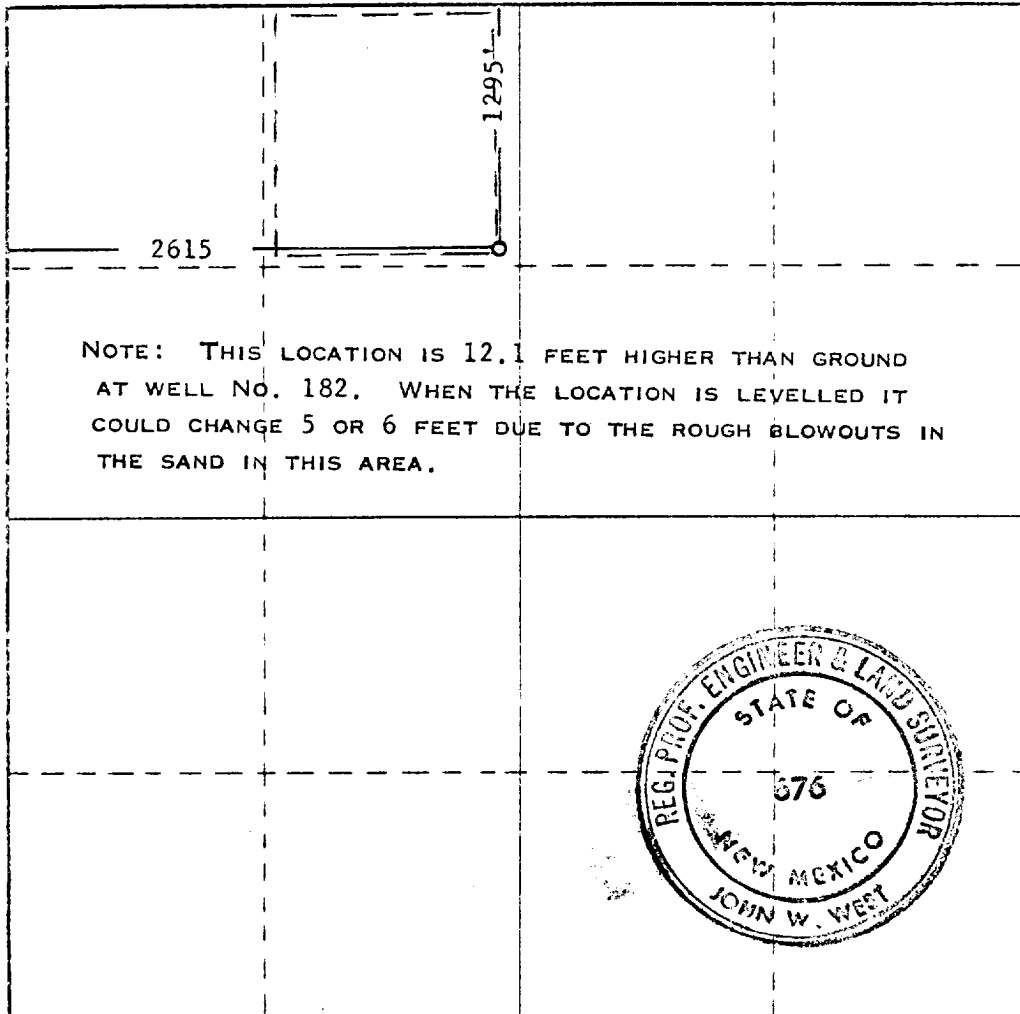
Operator <b>CONTINENTAL OIL COMPANY</b>		Lease <b>MCA UNIT</b>		Well No. <b>282</b>
Unit Letter <b>C</b>	Section <b>27</b>	Township <b>17 SOUTH</b>	Range <b>32 EAST</b>	County <b>LEA</b>
Actual Footage Location of Well: <b>1295</b> feet from the <b>NORTH</b> line and <b>2615</b> feet from the <b>WEST</b> line				
Ground Level Elev.	Producing Formation <i>Grayburg-San Andres</i>		Pool <i>Malg G-SA Repress</i>	Dedicated Acreage <b>40</b>

1. Outline the acreage dedicated to the subject well by colored pencil or hatchure marks on the plat below.
2. If more than one lease is dedicated to the well, outline each and identify the ownership thereof (both as to working interest and royalty).
3. If more than one lease of different ownership is dedicated to the well, have the interests of all owners been consolidated by communitization, unitization, force-pooling, etc?

☐ Yes ☐ No If answer is "yes," type of consolidation \_\_\_\_\_

If answer is "no," list the owners and tract descriptions which have actually been consolidated. (Use reverse side of this form if necessary.) \_\_\_\_\_

No allowable will be assigned to the well until all interests have been consolidated (by communitization, unitization, forced-pooling, or otherwise) or until a non-standard unit, eliminating such interests, has been approved by the Commission.



CERTIFICATION

I hereby certify that the information contained herein is true and complete to the best of my knowledge and belief.

*John W. West*  
Admin. Supervisor  
Continental Oil Co.

Date  
*Aug 3, 1971*

I hereby certify that the well location shown on this plat was plotted from field notes of actual surveys made by me or under my supervision, and that the same is true and correct to the best of my knowledge and belief.

Date Surveyed

**7-29-1971**

Registered Professional Engineer and/or Land Surveyor

*John W. West*  
Certificate No. **676**

0 330 660 990 1320 1650 1980 2310 2640 2970 3300 3630 3960 4290 4620 4950 5280 5610 5940 6270 6600

**113**

**RECEIVED**

**AUG 18 1971**

**OIL CONSERVATION COMM.  
HOBBS, N. M.**