

NE EXICO OIL CONSERVATION COMMISSIC
WELL LOCATION AND ACREAGE DEDICATION PLAT

Form 102
Supp. Rules C-128
Effective 1-1-65

All distances must be from the outer boundaries of the Section

Operator Maralo, Inc.			Lease STATE K-33		Well No. 3
Unit Letter O	Section 30	Township 16 SOUTH	Range 36 EAST	County LEA	

Actual Footage Location of Well:

1830 feet from the EAST line and 660 feet from the SOUTH line

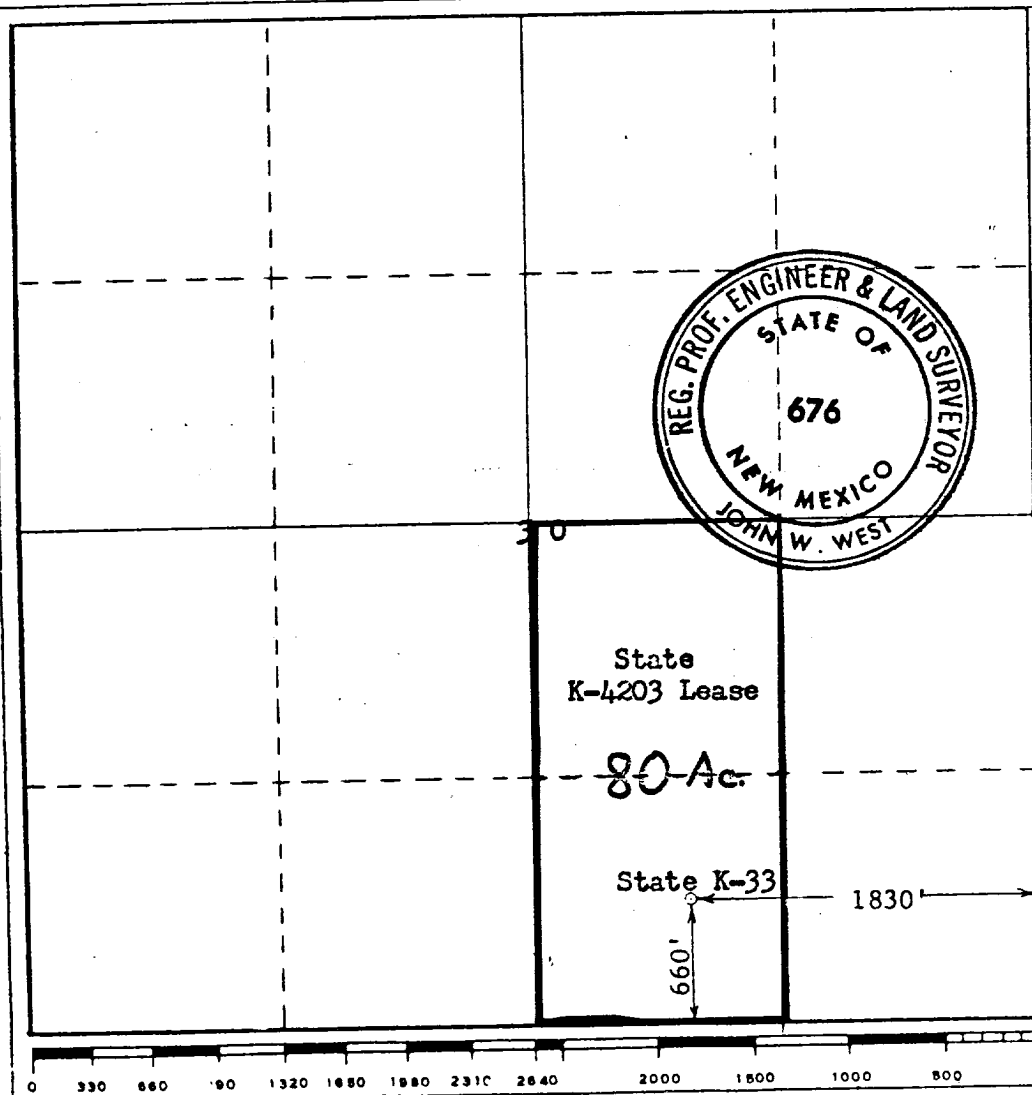
Ground Level Elev. 3941.0 Gr.	Producing Formation Chester	Pool Shoe Bar East Chester	Dedicated Acreage: 1/2 of SE 1/4 80 Acres
----------------------------------	--------------------------------	--	--

1. Outline the acreage dedicated to the subject well by colored pencil or hachure marks on the plat below.
2. If more than one lease is dedicated to the well, outline each and identify the ownership thereof (both as to working interest and royalty).
3. If more than one lease of different ownership is dedicated to the well, have the interests of all owners been consolidated by communitization, unitization, force-pooling, etc?

☐ Yes ☒ No If answer is "yes," type of consolidation _____

If answer is "no," list the owners and tract descriptions which have actually been consolidated. (Use reverse side of this form if necessary.) Maralo owns both leases

No allowable will be assigned to the well until all interests have been consolidated (by communitization, unitization, forced-pooling, or otherwise) or until a non-standard unit, eliminating such interests, has been approved by the Commission.



CERTIFICATION

I hereby certify that the information contained herein is true and complete to the best of my knowledge and belief.

Brenda Coffman

Name
Brenda Coffman

Position
Agent

Company
Maralo, Inc.

Date
January 10, 1985

I hereby certify that the well location shown on this plat was plotted from field notes of actual surveys made by me or under my supervision, and that the same is true and correct to the best of my knowledge and belief.

Date Surveyed
AUGUST 7, 1971

Registered Professional Engineer and/or Land Surveyor

John W. West
Certificate No. 676

RECEIVED

JAN 14 1985

OFFICE