

UNITED STATES  
DEPARTMENT OF THE INTERIOR  
GEOLOGICAL SURVEY

30-025-7928

LC-057210

5. LEASE DESIGNATION AND SERIAL NO.

~~LC 061841~~

6. IF INDIAN, ALLOTTEE OR TRIBE NAME

7. UNIT AGREEMENT NAME

MCA

8. FARM OR LEASE NAME

MCA Unit

9. WELL NO.

299

10. FIELD AND POOL, OR WILDCAT

Meli G-5A Repress

11. SEC. T., R., M., OR BLK.  
AND SURVEY OR AREA

sec 27, T-17S, R-32E

12. COUNTY OR PARISH

Lea

13. STATE

N. Mex

## APPLICATION FOR PERMIT TO DRILL, DEEPEN, OR PLUG BACK

1a. TYPE OF WORK

DRILL ☒DEEPEN ☐PLUG BACK ☐

b. TYPE OF WELL

OIL  
WELL ☒GAS  
WELL ☐

OTHER

SINGLE  
ZONE ☐MULTIPLE  
ZONE ☐

2. NAME OF OPERATOR

Continental Oil Company

3. ADDRESS OF OPERATOR

Box 460 Hobbs, New Mexico

4. LOCATION OF WELL (Report location clearly and in accordance with any State requirements.)\*

At surface  
175' FNL and 1295' FWL of Sec 27

At proposed prod. zone

Same

14. DISTANCE IN MILES AND DIRECTION FROM NEAREST TOWN OR POST OFFICE\*

10. DISTANCE FROM PROPOSED\*

LOCATION TO NEAREST  
PROPERTY OR LEASE LINE, FT.  
(Also to nearest drlg. unit line, if any)18. DISTANCE FROM PROPOSED LOCATION\*  
TO NEAREST WELL, DRILLING, COMPLETED,  
OR APPLIED FOR, ON THIS LEASE, FT.

21. ELEVATIONS (Show whether DF, RT, GR, etc.)

23.

## PROPOSED CASING AND CEMENTING PROGRAM

SIZE OF HOLE	SIZE OF CASING	WEIGHT PER FOOT	SETTING DEPTH	QUANTITY OF CEMENT
12 1/4"	8 5/8"	20 #	850'	425 SKS - circ
7 7/8"	5 1/2"	14 #	4200'	300 SKS

It is proposed to drill a straight hole to a TD of 4200' and complete as a Mayberry San Andres producing oil well.

Unorthodox location of this well was approved under NMOC admin order NSL-523 dated November 1, 1971.

IN ABOVE SPACE DESCRIBE PROPOSED PROGRAM: If proposal is to deepen or plug back, give data on present productive zone and proposed new productive zone. If proposal is to drill or deepen directionally, give pertinent data on subsurface locations and measured and true vertical depths. Give blowout preventer program, if any.

24.

SIGNED



TITLE

Admin Supervisor

DATE

11-3-71

(This space for Federal or State office use)

PERMIT NO.

APPROVAL DATE

APPROVED BY

TITLE

CONDITIONS OF APPROVAL, IF ANY:

APPROVED

NOV 4 1971

ARTHUR R. BROWN  
DISTRICT ENGINEER

USGS(5) MCA(3) File \*See Instructions On Reverse Side

RECEIVED

FEB 10 1971

OIL CONSERVATION COMM.  
HOODS, H. H.

NEW MEXICO OIL CONSERVATION COMMISSION  
WELL LOCATION AND ACREAGE DEDICATION PLAT

Form C-102  
Supersedes C-128  
Effective 1-1-65

All distances must be from the outer boundaries of the Section.

Operator <b>CONTINENTAL OIL CO.</b>			Lease <b>M C A UNIT</b>		Well No. <b>299</b>
Unit Letter <b>D</b>	Section <b>27</b>	Township <b>17 SOUTH</b>	Range <b>32 EAST</b>	County <b>LEA</b>	

Actual Footage Location of Well:

**175** feet from the **NORTH** line and **1295** feet from the **WEST** line

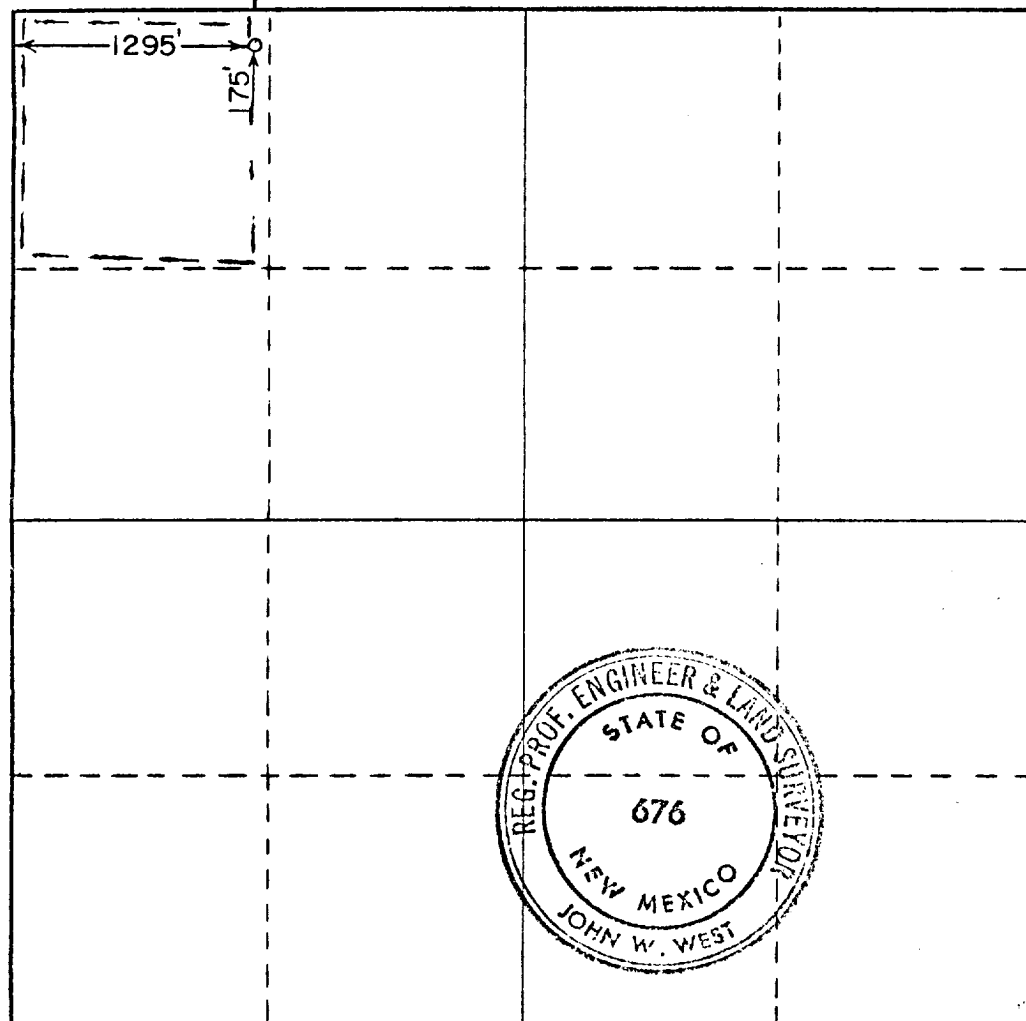
Ground Level Elev.	Producing Formation <b>Hayburg Sandstone</b>	Pool <b>Malj G-SA Repress</b>	Dedicated Acreage: <b>40</b>	Acres
--------------------	---	----------------------------------	---------------------------------	-------

1. Outline the acreage dedicated to the subject well by colored pencil or hachure marks on the plat below.
2. If more than one lease is dedicated to the well, outline each and identify the ownership thereof (both as to working interest and royalty).
3. If more than one lease of different ownership is dedicated to the well, have the interests of all owners been consolidated by communitization, unitization, force-pooling, etc?

☐ Yes ☐ No If answer is "yes," type of consolidation \_\_\_\_\_

If answer is "no," list the owners and tract descriptions which have actually been consolidated. (Use reverse side of this form if necessary.) \_\_\_\_\_

No allowable will be assigned to the well until all interests have been consolidated (by communitization, unitization, forced-pooling, or otherwise) or until a non-standard unit, eliminating such interests, has been approved by the Commission.



CERTIFICATION

I hereby certify that the information contained herein is true and complete to the best of my knowledge and belief.

Name *John W. West*  
Position *Admin Supervisor*  
Company *Continental Oil Co*  
Date *November 3, 1971*

I hereby certify that the well location shown on this plat was plotted from field notes of actual surveys made by me or under my supervision, and that the same is true and correct to the best of my knowledge and belief.

Date Surveyed  
**OCTOBER 16, 1971**  
Registered Professional Engineer and/or Land Surveyor  
*John W. West*  
Certificate No. **676**



172

RECEIVED

NOV 9 1971

OIL CONSERVATION COMM.  
HOBBES, N. H.