

**NEW MEXICO OIL CONSERVATION COMMISSION  
WELL LOCATION AND ACREAGE DEDICATION PLAT**

Form O-102  
Supersedes O-128  
Effective 1-1-65

All distances must be from the outer boundaries of the Section.

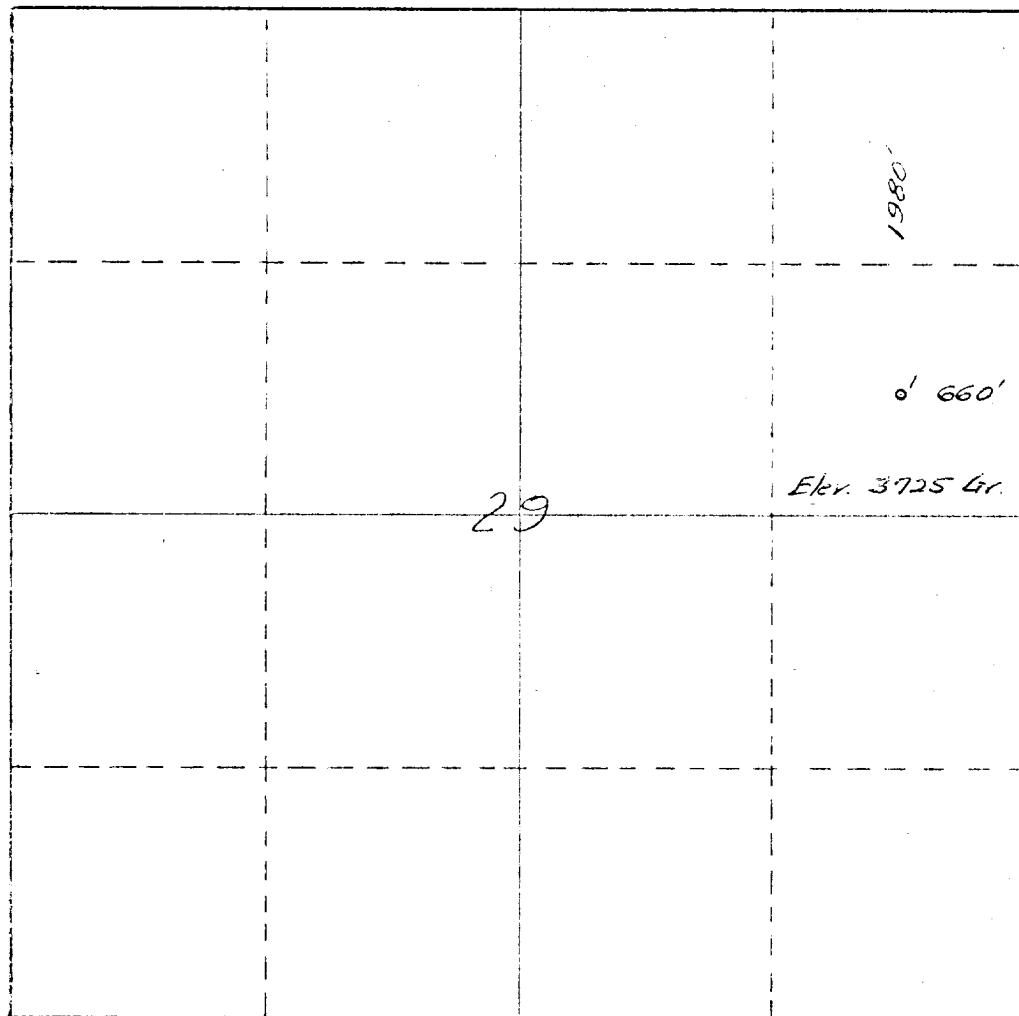
Operator <b>Green &amp; Michaelson Producing Co.</b>			Lease <b>Federal</b>		Well No. <b>1</b>
Section <b>29</b>	Township <b>10S</b>	Range <b>38E</b>	County <b>Lea</b>		
Actual Footage Location of Well:					
<b>1980</b>	feet from the	<b>North</b>	line and	<b>660</b>	feet from the
					<b>East</b>
Ground Level Elev. <b>3725 Gr.</b>	Producing Formation <b>Drinkard</b>		Pool <b>Garrett</b>		Dedicated Acreage: <b>40</b> Acres

- Outline the acreage dedicated to the subject well by colored pencil or hatchure marks on the plat below.
- If more than one lease is dedicated to the well, outline each and identify the ownership thereof (both as to working interest and royalty).
- If more than one lease of different ownership is dedicated to the well, have the interests of all owners been consolidated by communitization, unitization, force-pooling, etc?

☐ Yes ☒ No If answer is "yes," type of consolidation \_\_\_\_\_

If answer is "no," list the owners and tract descriptions which have actually been consolidated. (Use reverse side of this form if necessary.) United States all 100 acres

No allowable will be assigned to the well until all interests have been consolidated (by communitization, unitization, forced-pooling, or otherwise) or until a non-standard unit, eliminating such interests, has been approved by the Commission.



**CERTIFICATION**

I hereby certify that the information contained herein is true and complete to the best of my knowledge and belief.

Name  
**L. H. Michaelson**

Position  
**Vice President**

Company  
**Green & Michaelson Prod. Co.**

Date  
**15, November 1971**

I hereby certify that the well location shown on this plat was plotted from field notes of actual surveys made by me or under my supervision, and that the same is true and correct to the best of my knowledge and belief.

Date Surveyed  
**November 15, 1971**

Registered Professional Land Surveyor  
**J. J. Johnson**

Certificate No.  
**1390**

**NEW MEXICO**

500 600 700 800 900 1000 1100 1200 1300 1400 1500 1600 1700 1800 1900 2000

RECEIVED

1967

OIL CONSERVATION BOARD  
RECEIVED