

UNITED STATES
DEPARTMENT OF THE INTERIOR
GEOLOGICAL SURVEY

APPLICATION FOR PERMIT TO DRILL, DEEPEN, OR PLUG BACK

1a. TYPE OF WORK

DRILL ☒DEEPEN ☐PLUG BACK ☐

b. TYPE OF WELL

OIL
WELL ☒GAS
WELL ☐

OTHER

SINGLE
ZONE ☐MULTIPLE
ZONE ☐

2. NAME OF OPERATOR

Continental oil Company

3. ADDRESS OF OPERATOR

Box 460 Hobbs New Mexico

4. LOCATION OF WELL (Report location clearly and in accordance with any State requirements.)*

At surface

1295' FNL and 2615' FEL of Sec 30

At proposed prod. zone

Same

14. DISTANCE IN MILES AND DIRECTION FROM NEAREST TOWN OR POST OFFICE*

15. DISTANCE FROM PROPOSED*

LOCATION TO NEAREST
PROPERTY OR LEASE LINE, FT.
(Also to nearest drlg. line, if any)

16. NO. OF ACRES IN LEASE

7853

17. NO. OF ACRES ASSIGNED
TO THIS WELL

40

18. DISTANCE FROM PROPOSED LOCATION*
TO NEAREST WELL, DRILLING, COMPLETED,
OR APPLIED FOR, ON THIS LEASE, FT.

19. PROPOSED DEPTH

4020'

20. ROTARY OR CABLE TOOLS

rotary

21. ELEVATIONS (Show whether DF, RT, GR, etc.)

22. APPROX. DATE WORK WILL START*

3-15-72

23.

PROPOSED CASING AND CEMENTING PROGRAM

SIZE OF HOLE	SIZE OF CASING	WEIGHT PER FOOT	SETTING DEPTH	QUANTITY OF CEMENT
12 1/4"	8 5/8"	20 #	800'	Circ - 400 sacks
7 7/8"	5 1/2"	14 #	4020'	300 sacks

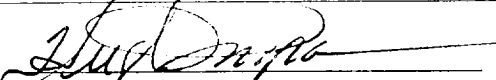
It is proposed to drill a straight hole to a TD of 4020' and complete as a Grayburg San Andres producer.

Unorthodox oil well location of this well was approved under NMOC administrative order NSL-539 dated February 24, 1972.

IN ABOVE SPACE DESCRIBE PROPOSED PROGRAM: If proposal is to deepen or plug back, give data on present productive zone and proposed new productive zone. If proposal is to drill or deepen directionally, give pertinent data on subsurface locations and measured and true vertical depths. Give blowout preventer program, if any.

24.

SIGNED



TITLE

Admin. Supervisor

DATE

3-1-72

(This space for Federal or State office use)

PERMIT NO.

APPROVAL DATE

APPROVED
MAR 2 1972

APPROVED BY

TITLE

ARTHUR R. BROWN
DISTRICT ENGINEER

DATE

CONDITIONS OF APPROVAL, IF ANY:

*See Instructions On Reverse Side

USGSR(S) MCA(13) File

RECEIVED

MAR 7 1972

OIL CONSERVATION COMM.
HOBBES, N. M.

NEW MEXICO OIL CONSERVATION COMMISSION
WELL LOCATION AND ACREAGE DEDICATION PLAT.

Form C-102
Supersedes C-128
Effective 1-1-65

All distances must be from the outer boundaries of the Section.

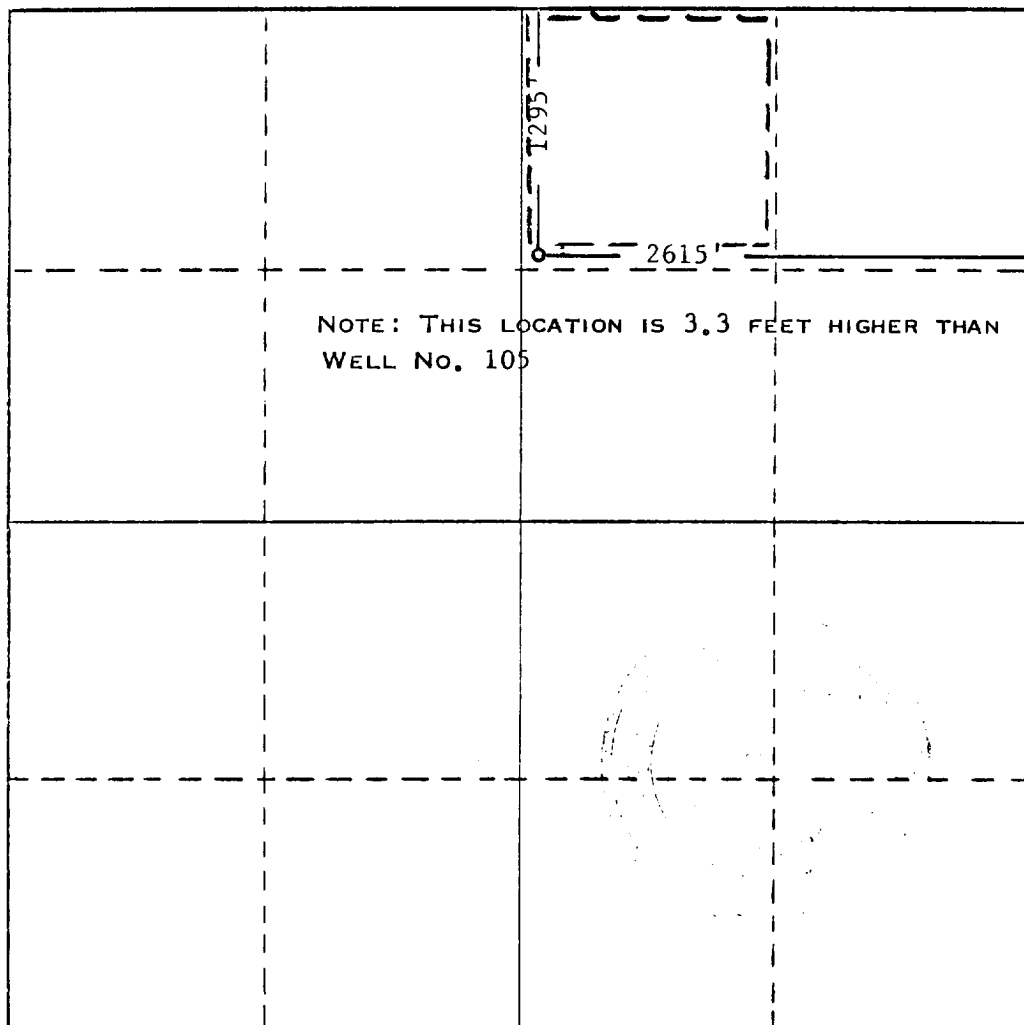
Operator CONTINENTAL OIL COMPANY		Lease MCA UNIT		Well No. 306
Unit Letter B	Section 30	Township 17 SOUTH	Range 32 EAST	County LEA
Actual Footage Location of Well: 1295 feet from the NORTH line and 2615 feet from the EAST line				
Ground Level Elev.	Producing Formation Shinarump San Andres		Pool Maly G-SA Repress	Dedicated Acreage: 40 Acres

1. Outline the acreage dedicated to the subject well by colored pencil or hachure marks on the plat below.
2. If more than one lease is dedicated to the well, outline each and identify the ownership thereof (both as to working interest and royalty).
3. If more than one lease of different ownership is dedicated to the well, have the interests of all owners been consolidated by communitization, unitization, force-pooling, etc?

☐ Yes ☐ No If answer is "yes," type of consolidation _____

If answer is "no," list the owners and tract descriptions which have actually been consolidated. (Use reverse side of this form if necessary.) _____

No allowable will be assigned to the well until all interests have been consolidated (by communitization, unitization, forced-pooling, or otherwise) or until a non-standard unit, eliminating such interests, has been approved by the Commission.



CERTIFICATION

I hereby certify that the information contained herein is true and complete to the best of my knowledge and belief.

Name *[Signature]*
Position *Admin Supervisor*
Company *Continental oil Co.*
Date *March 1, 1972*

I hereby certify that the well location shown on this plat was plotted from field notes of actual surveys made by me or under my supervision, and that the same is true and correct to the best of my knowledge and belief.

Date Surveyed
2-15-1972
Registered Professional Engineer and/or Land Surveyor
[Signature]
Certificate No. **676**



RECEIVED

MAR 7 1972

OIL CONSERVATION COMM.
HOBBS, N. M.