

UNITED STATES
DEPARTMENT OF THE INTERIOR
GEOLOGICAL SURVEY

029405(4)

APPLICATION FOR PERMIT TO DRILL, DEEPEN, OR PLUG BACK

1a. TYPE OF WORK
DRILL ☒ DEEPEN ☐ PLUG BACK ☐

b. TYPE OF WELL
OIL WELL ☒ GAS WELL ☐ OTHER ☐
SINGLE ZONE ☒ MULTIPLE ZONE ☐

2. NAME OF OPERATOR
Continental Oil Company

3. ADDRESS OF OPERATOR
Box 460, Hobbs, New Mexico 88240

4. LOCATION OF WELL (Report location clearly and in accordance with any State requirements.)
At surface
1395' FNL and 1295' FEL of Sec. 29 19
At proposed prod. zone
Same

14. DISTANCE IN MILES AND DIRECTION FROM NEAREST TOWN OR POST OFFICE*

5. LEASE DESIGNATION AND SERIAL NO.

LC 060199(6)

6. IF INDIAN, ALLOTTEE OR TRIBE NAME

7. UNIT AGREEMENT NAME

MCA

8. FARM OR LEASE NAME

MCA Unit

9. WELL NO.

309

10. FIELD AND POOL, OR WILDCAT

M/J. G.-SA Repress

11. SEC., T., R., M., OR BLK.
AND SURVEY OR AREA

Sec. 19, T-17S, R-32E

12. COUNTY OR PARISH 13. STATE

Lea N. Mex

15. DISTANCE FROM PROPOSED*
LOCATION TO NEAREST
PROPERTY OR LEASE LINE, FT.
(Also to nearest drilg. line, if any)

16. NO. OF ACRES IN LEASE

7853

17. NO. OF ACRES ASSIGNED
TO THIS WELL

40

18. DISTANCE FROM PROPOSED LOCATION*
TO NEAREST WELL, DRILLING, COMPLETED,
OR APPLIED FOR, ON THIS LEASE, FT.

19. PROPOSED DEPTH

4,100'

20. ROTARY OR CABLE TOOLS

Rotary

21. ELEVATIONS (Show whether DF, RT, GR, etc.)

3960 est. gr.

22. APPROX. DATE WORK WILL START*

4-14-72

PROPOSED CASING AND CEMENTING PROGRAM

SIZE OF HOLE	SIZE OF CASING	WEIGHT PER FOOT	SETTING DEPTH	QUANTITY OF CEMENT
12 1/4"	8 5/8"	20 #	700'	Circ - 350 Sacks
7 7/8"	5 1/2"	14 #	4100'	300 Sacks

It is proposed to drill a straight hole
to a TD of 4100' and complete as a
Grayburg San Andres producing oil well.

IN ABOVE SPACE DESCRIBE PROPOSED PROGRAM: If proposal is to deepen or plug back, give data on present productive zone and proposed new productive zone. If proposal is to drill or deepen directionally, give pertinent data on subsurface locations and measured and true vertical depths. Give blowout preventer program, if any.

24. SIGNED [Signature] TITLE Admin. Supervisor DATE 4-3-72

(This space for Federal or State office use)

PERMIT NO.

APPROVAL DATE

APPROVED

APPROVED BY

TITLE

DATE

CONDITIONS OF APPROVAL, IF ANY:

APR 4 1972

*See Instructions On Reverse Side J L GORDON
ACTING DISTRICT ENGINEER

USGS(5) MCA(3) File

RECEIVED

MAY 11 1962

U.S. DEPARTMENT OF JUSTICE
FEDERAL BUREAU OF INVESTIGATION
WASHINGTON, D. C.

NEW MEXICO OIL CONSERVATION COMMISSION
WELL LOCATION AND ACREAGE DEDICATION PLAT

Form C-102
Supersedes C-128
Effective 1-1-65

All distances must be from the outer boundaries of the Section

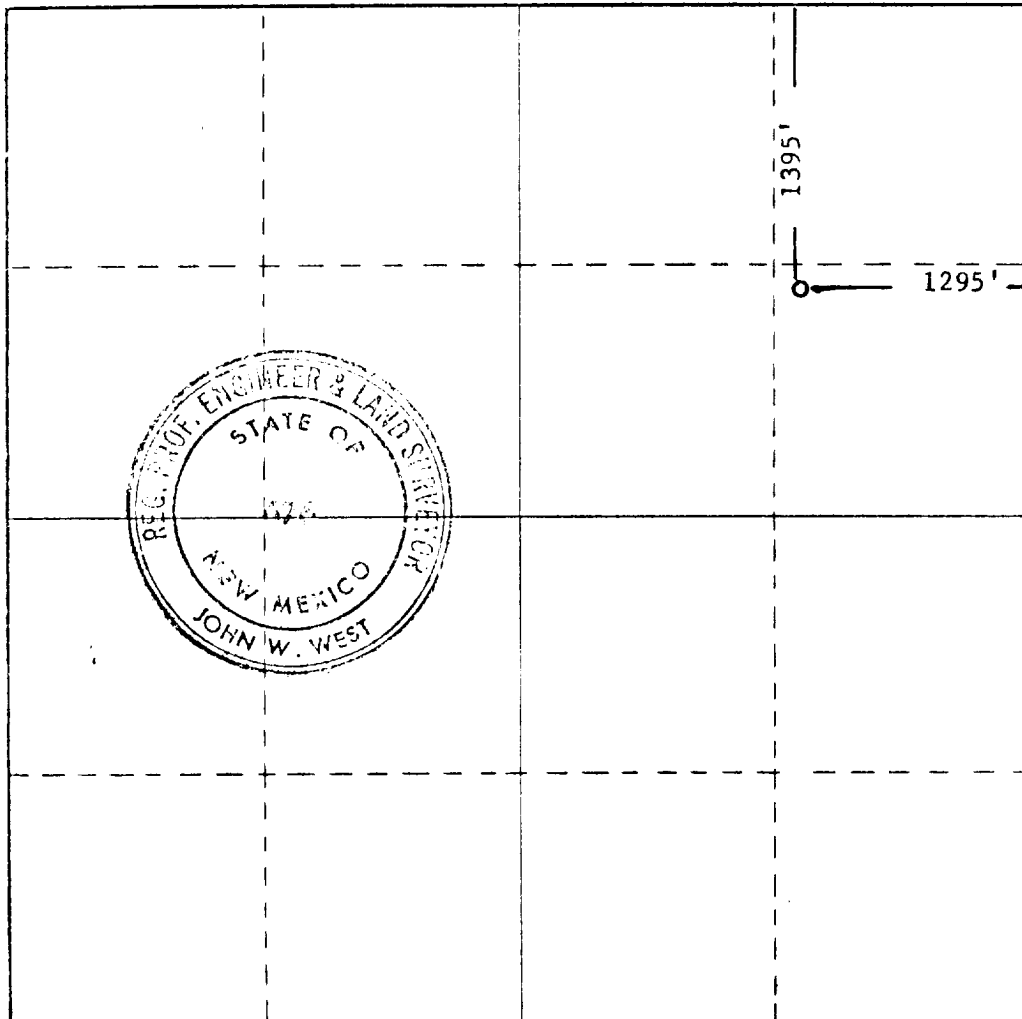
Operator CONTINENTAL OIL COMPANY		Lease MCA UNIT		Well No. 309	
Tract Letter H	Section 19	Township 17 SOUTH	Range 32 EAST	County LEA	
Actual Footage Location of Well: 1395 feet from the NORTH line and 1295 feet from the EAST line					
Ground Level Elev.	Producing Formation Grayburg San Andres		Pool Malt G-SA Rep res	Dedicated Acreage: 40	

1. Outline the acreage dedicated to the subject well by colored pencil or hatchure marks on the plat below.
2. If more than one lease is dedicated to the well, outline each and identify the ownership thereof (both as to working interest and royalty).
3. If more than one lease of different ownership is dedicated to the well, have the interests of all owners been consolidated by communitization, unitization, force-pooling, etc?

☐ Yes ☐ No If answer is "yes," type of consolidation _____

If answer is "no," list the owners and tract descriptions which have actually been consolidated. (Use reverse side of this form if necessary.) _____

No allowable will be assigned to the well until all interests have been consolidated (by communitization, unitization, forced-pooling, or otherwise) or until a non-standard unit, eliminating such interests, has been approved by the Commission.



CERTIFICATION

I hereby certify that the information contained herein is true and complete to the best of my knowledge and belief

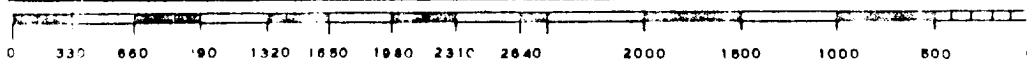
[Signature]
Admin. Supervisor
Continental Oil Co.
Date **April 3, 1972**

I hereby certify that the well location shown on this plat was plotted from field notes of actual surveys made by me or under my supervision, and that the same is true and correct to the best of my knowledge and belief.

Date Surveyed
3-27-1972

Registered Professional Engineer
and Land Surveyor

[Signature]
John W. West
Certificate No. **676**



RECEIVED

APR 14 1962

OIL CONSERVATION COMM.
HOBLBS. R. W.

11