

UNITED STATES
DEPARTMENT OF THE INTERIOR
GEOLOGICAL SURVEY

APPLICATION FOR PERMIT TO DRILL, DEEPEN, OR PLUG BACK

1a. TYPE OF WORK

DRILL ☒

DEEPEN ☐

PLUG BACK ☐

b. TYPE OF WELL

OIL
WELL ☒

GAS
WELL ☐

OTHER

SINGLE
ZONE ☒

MULTIPLE
ZONE ☐

2. NAME OF OPERATOR

CONTINENTAL OIL COMPANY

3. ADDRESS OF OPERATOR

P.O. BOX 460 HOBBS NEW MEXICO

4. LOCATION OF WELL (Report location clearly and in accordance with any State requirements.)*

At surface

1295' FSL & 1295' FWL SEC 22

At proposed prod. zone

SAME

14. DISTANCE IN MILES AND DIRECTION FROM NEAREST TOWN OR POST OFFICE*

15. DISTANCE FROM PROPOSED*

LOCATION TO NEAREST
PROPERTY OR LEASE LINE, FT.
(Also to nearest drig. line, if any)

18. DISTANCE FROM PROPOSED LOCATION*
TO NEAREST WELL, DRILLING, COMPLETED,
OR APPLIED FOR, ON THIS LEASE, FT.

16. NO. OF ACRES IN LEASE

7853

19. PROPOSED DEPTH

4200

17. NO. OF ACRES ASSIGNED
TO THIS WELL

40

20. ROTARY OR CABLE TOOLS

ROTARY

21. ELEVATIONS (Show whether DF, RT, GR, etc.)

4025' EST GR

22. APPROX. DATE WORK WILL START*

6-26-72

23.

PROPOSED CASING AND CEMENTING PROGRAM

SIZE OF HOLE	SIZE OF CASING	WEIGHT PER FOOT	SETTING DEPTH	QUANTITY OF CEMENT
12 1/4	8 5/8	20 #	900'	CIRC 450 SACKS
7 7/8	5 1/2 J-55	14 #	4200'	300 SACKS

IT IS PROPOSED TO DRILL A STRAIGHT HOLE TO A TD OF 4200' AND COMPLETE AS A GRAYBURG SAN ANDRES PRODUCER. A BLOWOUT PREVENTER WILL BE INSTALLED. MUD PROGRAM - 0-900' (8.5-9.5 SPUD MUD) AND 900'-4200' (9.5-11.5 SALT GEL)

UNORTHODOX LOCATION OF THIS WELL WAS APPROVED BY NANOCC ADMIN. ORDER NSL-560. ATTACHED IS A PLAT INDICATING THE WATER LINE (AND LATER FLOW LINE) AND LOCATION OF NO. 316 IN RELATION TO EXISTING ROADS. THE V-DOOR ON THE DRILLING RIG WILL FACE WEST. ATTACHED IS A SCHEMATIC OF THE DRILLING RIG TO BE USED. THE DRILLING PAD IS 120' X 130' AND THE PITS WILL BE 200' X 200'.

IN ABOVE SPACE DESCRIBE PROPOSED PROGRAM: If proposal is to deepen or plug back, give data on present productive zone and proposed new productive zone. If proposal is to drill or deepen directionally, give pertinent data on subsurface locations and measured and true vertical depths. Give blowout preventer program, if any.

24.

SIGNED

Robert Sault

TITLE ADMIN. SUPERVISOR

DATE 6-20-72

(This space for Federal or State office use)

PERMIT NO.

APPROVAL

APPROVED BY

TITLE

CONDITIONS OF APPROVAL, IF ANY:

APPROVED

JUN 22 1972

ARTHUR R. BROWN
DISTRICT ENGINEER

DATE

USGS(5) MCA(3) FILE

*See Instructions On Reverse Side

RECEIVED

JUN 27 1972

OIL CONSERVATION COMM.
HOBBS, N. M.

NEW MEXICO OIL CONSERVATION COMMISSION
WELL LOCATION AND ACREAGE DEDICATION PLAT

Form O-10,
Supersedes O-128
Effective 1-1-65

All distances must be from the outer boundaries of the Section

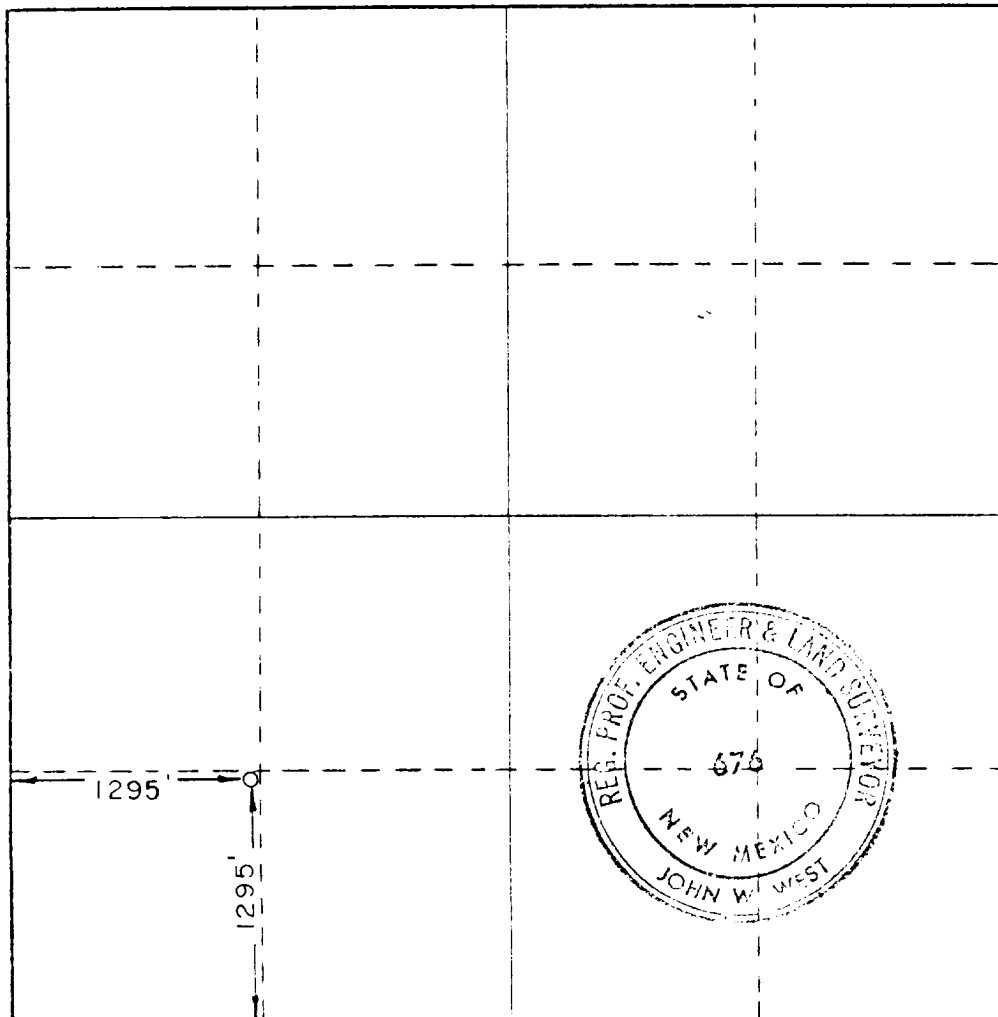
Operator CONTINENTAL OIL COMPANY			Lease M C A		Well No. 316
Tract Letter M	Section 22	Township 17 SOUTH	Range 32 EAST	County LEA	
Actual Portage Location of Well: 1295 feet from the SOUTH line and 1295 feet from the WEST line					
Ground Level Elev. 4011.4'	Producing Formation G.P. - SOA		Pool MALJANAR		Dedicated Acreage: 40 Acres

1. Outline the acreage dedicated to the subject well by colored pencil or hatchure marks on the plat below.
2. If more than one lease is dedicated to the well, outline each and identify the ownership thereof (both as to working interest and royalty).
3. If more than one lease of different ownership is dedicated to the well, have the interests of all owners been consolidated by communitization, unitization, force-pooling, etc?

☐ Yes ☐ No If answer is "yes," type of consolidation _____

If answer is "no," list the owners and tract descriptions which have actually been consolidated. (Use reverse side of this form if necessary.) _____

No allowable will be assigned to the well until all interests have been consolidated (by communitization, unitization, forced-pooling, or otherwise) or until a non-standard unit, eliminating such interests, has been approved by the Commission.



CERTIFICATION

I hereby certify that the information contained herein is true and complete to the best of my knowledge and belief.

Name Robert Paulsen
Position ADMINISTRATIVE SUPERVISOR
Company CONTINENTAL OIL CO.

Date JUNE 20, 1972

I hereby certify that the well location shown on this plat was plotted from field notes of actual surveys made by me or under my supervision, and that the same is true and correct to the best of my knowledge and belief.

Date Surveyed
MAY 31, 1972

Registered Professional Engineer
and/or Land Surveyor

John W West
Certificate No. 676

173

RECEIVED

JUN 27 1972

OIL CONSERVATION COMM.
HOBBBS, N. H.