

UNITED STATES  
DEPARTMENT OF THE INTERIOR  
GEOLOGICAL SURVEY060199(a)  
5. LEASE DESIGNATION AND SERIAL NO.  
LC-0294106a

## APPLICATION FOR PERMIT TO DRILL, DEEPEN, OR PLUG BACK

## 1a. TYPE OF WORK

DRILL ☒DEEPEN ☐PLUG BACK ☐

## b. TYPE OF WELL

OIL  
WELL ☒GAS  
WELL ☐

OTHER

SINGLE  
ZONE ☐MULTIPLE  
ZONE ☐

## 2. NAME OF OPERATOR

Continental Oil Company

## 3. ADDRESS OF OPERATOR

Box 460 Hobbs, New Mexico

## 4. LOCATION OF WELL (Report location clearly and in accordance with any State requirements.\*)

At surface

1345' FEL and 2615' FNL of Sec 29

At proposed prod. zone

Some

## 14. DISTANCE IN MILES AND DIRECTION FROM NEAREST TOWN OR POST OFFICE\*

## 15. DISTANCE FROM PROPOSED\*

LOCATION TO NEAREST  
PROPERTY OR LEASE LINE, FT.  
(Also to nearest drlg. line, if any)

## 16. NO. OF ACRES IN LEASE

7853

17. NO. OF ACRES ASSIGNED  
TO THIS WELL

40

## 18. DISTANCE FROM PROPOSED LOCATION\*

TO NEAREST WELL, DRILLING, COMPLETED,  
OR APPLIED FOR, ON THIS LEASE, FT.

## 19. PROPOSED DEPTH

4125'

## 20. ROTARY OR CABLE TOOLS

Rotary

## 21. ELEVATIONS (Show whether DF, RT, GR, etc.)

3945' est gr

## 22. APPROX. DATE WORK WILL START\*

7-29-72

## 23.

## PROPOSED CASING AND CEMENTING PROGRAM

SIZE OF HOLE	SIZE OF CASING	WEIGHT PER FOOT	SETTING DEPTH	QUANTITY OF CEMENT
12 1/4"	8 5/8" H-40	20 #	800'	Circ - 400 Sacks
7 7/8"	5 1/2" J-55	14 #	4125'	300 Sacks

It is proposed to drill a straight hole to a TDO of 4125' and complete as a Haylung son andres producer. A blowout preventer will be installed. Mud program: 0-800' (8.5-9.5 # Spud mud) and 800'-4125' (9.5-10.5 # salt gel).

Unorthodox location of this well was approved by NMOC Administrative Order No. NSL-563. Attached is a plat indicating the water (and later flowline) for MCA unit #319. This line will be 1500' long. The V-door of the drilling rig will face east. The drilling pod is 180' x 130' and the pits will be 200' x 200'. A schematic of the drilling rig to be used is attached. The road will be 12' x 660' long.

IN ABOVE SPACE DESCRIBE PROPOSED PROGRAM: If proposal is to deepen or plug back, give data on present productive zone and proposed new productive zone. If proposal is to drill or deepen directionally, give pertinent data on subsurface locations and measured and true vertical depths. Give blowout preventer program, if any.

24. SIGNED Robert Gault III TITLE Admin. Supervisor DATE 7-21-72

(This space for Federal or State office use)

PERMIT NO. \_\_\_\_\_

APPROVAL \_\_\_\_\_

APPROVED BY \_\_\_\_\_

TITLE \_\_\_\_\_

CONDITIONS OF APPROVAL, IF ANY: \_\_\_\_\_

APPROVED  
JUL 23 1972ARTHUR R. BROWN  
DISTRICT ENGINEER

\*See Instructions On Reverse Side

USGS(5) MCA(3) File

RECEIVED

1/12/1971

OIL CONSERVATION COMM.  
HONOLULU, HAWAII

NEW MEXICO OIL CONSERVATION COMMISSION  
WELL LOCATION AND ACREAGE DEDICATION PLAT

Form C-102  
Supersedes C-128  
Effective 1-1-65

All distances must be from the outer boundaries of the Section.

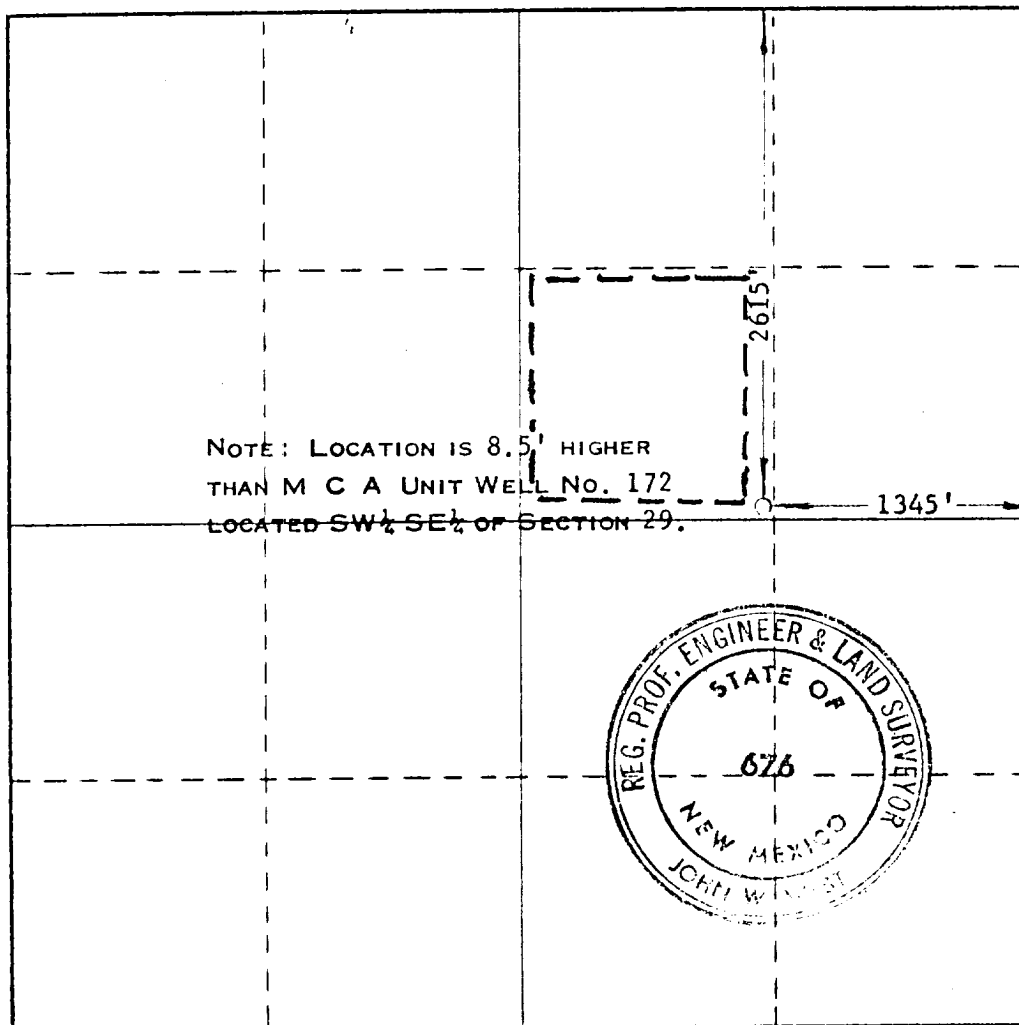
Operator <b>CONTINENTAL OIL COMPANY</b>		Lease <b>M C A UNIT</b>		Well No. <b>319</b>
Unit Letter <b>G</b>	Section <b>29</b>	Township <b>17 SOUTH</b>	Range <b>32 EAST</b>	County <b>LEA</b>
Actual Footage Location of Well: <b>1345</b> feet from the <b>EAST</b> line and <b>2615</b> feet from the <b>NORTH</b> line				
Ground Level Elev.	Producing Formation <b>Grayburg San Andre</b>	Pool <b>Mali G-SA Repress</b>	Dedicated Acreage: <b>40</b> Acres	

1. Outline the acreage dedicated to the subject well by colored pencil or hachure marks on the plat below.
2. If more than one lease is dedicated to the well, outline each and identify the ownership thereof (both as to working interest and royalty).
3. If more than one lease of different ownership is dedicated to the well, have the interests of all owners been consolidated by communitization, unitization, force-pooling, etc?

☐ Yes ☐ No If answer is "yes," type of consolidation \_\_\_\_\_

If answer is "no," list the owners and tract descriptions which have actually been consolidated. (Use reverse side of this form if necessary.) \_\_\_\_\_

No allowable will be assigned to the well until all interests have been consolidated (by communitization, unitization, forced-pooling, or otherwise) or until a non-standard unit, eliminating such interests, has been approved by the Commission.



CERTIFICATION

I hereby certify that the information contained herein is true and complete to the best of my knowledge and belief.

By Robert A. Daulton  
Position Admin. Supervisor  
Company Continental Oil Co.  
Date July 21, 1972

I hereby certify that the well location shown on this plat was plotted from field notes of actual surveys made by me or under my supervision, and that the same is true and correct to the best of my knowledge and belief.

Date Surveyed \_\_\_\_\_

Registered Professional Engineer and/or Land Surveyor

John W. Wort  
Certificate No. **676**

173

RECEIVED

APR 1 1972

OIL CONSERVATION COMM.  
DEBUC, D. C.