

UNITED STATES
DEPARTMENT OF THE INTERIOR
GEOLOGICAL SURVEY

APPLICATION FOR PERMIT TO DRILL, DEEPEN, OR PLUG BACK

1a. TYPE OF WORK

DRILL ☒DEEPEN ☐PLUG BACK ☐

b. TYPE OF WELL

OIL
WELL ☒GAS
WELL ☐OTHER ☐SINGLE
ZONE ☒MULTIPLE
ZONE ☐

2. NAME OF OPERATOR

Continental Oil Company

3. ADDRESS OF OPERATOR

Box 460 Hobbs, New Mexico

4. LOCATION OF WELL (Report location clearly and in accordance with any State requirements*)

At surface

1345' FSL and 75' FWL of Sec 27

At proposed prod. zone

Same

14. DISTANCE IN MILES AND DIRECTION FROM NEAREST TOWN OR POST OFFICE*

15. DISTANCE FROM PROPOSED*

LOCATION TO NEAREST
PROPERTY OR LEASE LINE, FT.
(Also to nearest drlg. unit line, if any)

18. DISTANCE FROM PROPOSED LOCATION*

TO NEAREST WELL, DRILLING, COMPLETED,
OR APPLIED FOR, ON THIS LEASE, FT.

21. ELEVATIONS (Show whether DF, RT, GR, etc.)

3965' cat gr

16. NO. OF ACRES IN LEASE

78.53

19. PROPOSED DEPTH

4175'

17. NO. OF ACRES ASSIGNED

TO THIS WELL

40

20. ROTARY OR CABLE TOOLS

rotary

22. APPROX. DATE WORK WILL START*

8-29-72

23.

PROPOSED CASING AND CEMENTING PROGRAM

SIZE OF HOLE	SIZE OF CASING	WEIGHT PER FOOT	SETTING DEPTH	QUANTITY OF CEMENT
12 1/4"	8 5/8" H-40	20#	950'	Circ - 450 sacks
7 1/2"	5 1/2" J-55	14#	4175'	300 sacks

It is proposed to drill a straight hole to a TD of 4175' and complete as a Grayburg San Andres producer. Blowout preventer will be installed. Mud program (0-950'; 8-5-9.5# Spud mud and 950'-4175'; 9.5-10.5, salt gel).

Existing roads will be used for this well location. The drilling pad is 180' X 130' and the pits will be 200'. V-door of drilling rig will face toward the east. Unorthodox location approved by Admin. Order NSL-568.

IN ABOVE SPACE DESCRIBE PROPOSED PROGRAM: If proposal is to deepen or plug back, give data on present productive zone and proposed new productive zone. If proposal is to drill or deepen directionally, give pertinent data on subsurface locations and measured and true vertical depths. Give blowout preventer program, if any.

24.

SIGNED

Robert Gault III

TITLE

Admin. Supervisor

DATE

8-22-72

(This space for Federal or State office use)

PERMIT NO.

APPROVAL DATE

APPROVED BY

TITLE

CONDITIONS OF APPROVAL, IF ANY:

APPROVED

AUG 24 1972

ARTHUR R. BROWN

DISTRICT ENGINEER

*See Instructions On Reverse Side

USGS(5) MCA(3) File

RECEIVED

AUG 20 1972

OIL CONSERVATION COMM.
HOBBS, N. M.

NEW MEXICO OIL CONSERVATION COMMISSION
WELL LOCATION AND ACREAGE DEDICATION PLAT

Form C-102
Supersedes C-128
Effective 1-1-65

All distances must be from the outer boundaries of the Section.

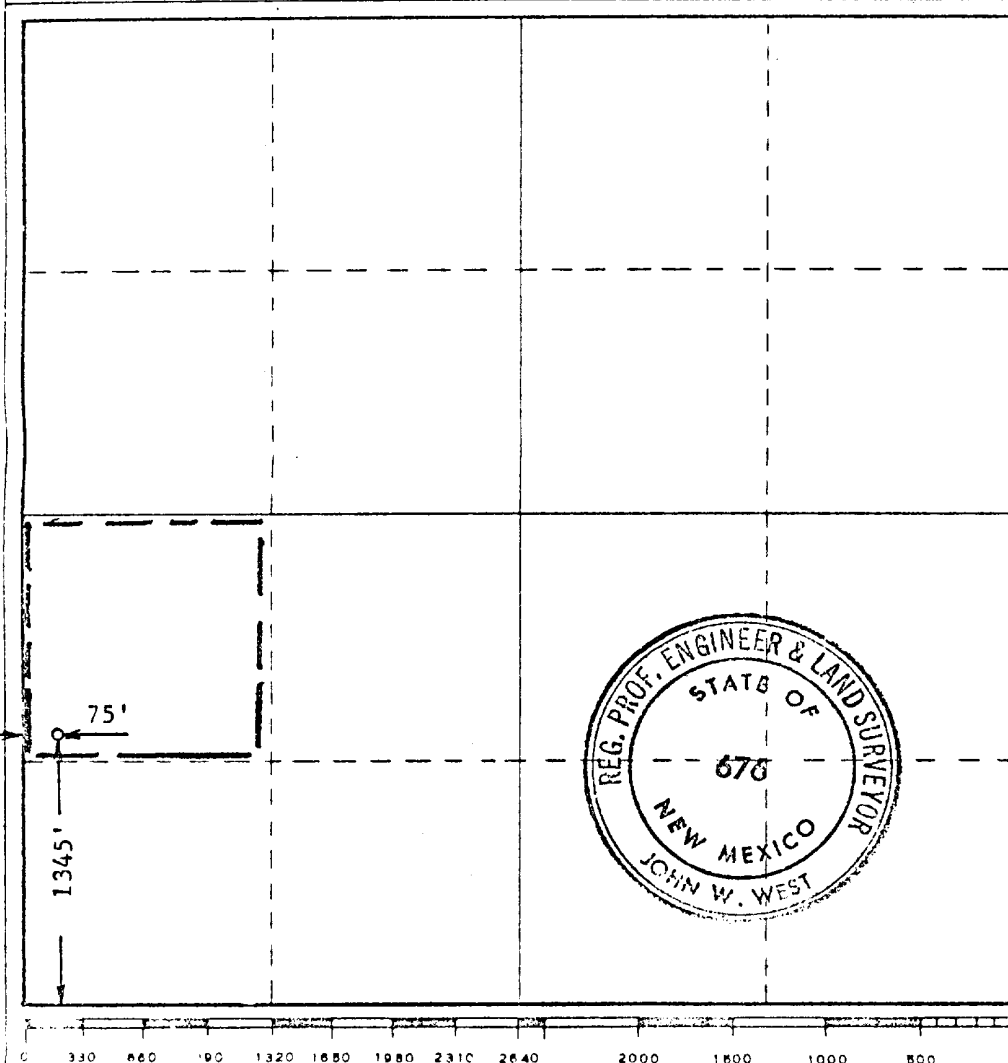
Operator CONTINENTAL OIL COMPANY			Lease MCA UNIT		Well No. 321
Tract Letter L	Section 27	Township 17 SOUTH	Range 32 EAST	County LEA	
Actual Footage Location of Well:					
1345 feet from the SOUTH line and		75 feet from the WEST line			
Ground Level Elev.	Producing Formation <i>Grayburg San Andres</i>			Pool <i>Malj G-SA Regress</i>	Dedicated Acreage 40

1. Outline the acreage dedicated to the subject well by colored pencil or hatchure marks on the plat below.
2. If more than one lease is dedicated to the well, outline each and identify the ownership thereof (both as to working interest and royalty).
3. If more than one lease of different ownership is dedicated to the well, have the interests of all owners been consolidated by communitization, unitization, force-pooling, etc?

☐ Yes ☐ No If answer is "yes," type of consolidation _____

If answer is "no," list the owners and tract descriptions which have actually been consolidated. (Use reverse side this form if necessary.) _____

No allowable will be assigned to the well until all interests have been consolidated (by communitization, unitization, forced-pooling, or otherwise) or until a non-standard unit, eliminating such interests, has been approved by the Commission.



CERTIFICATION

I hereby certify that the information contained herein is true and complete to the best of my knowledge and belief.

Name *Robert Bault*
Position *Admin. Supervisor*
Company *Continental oil Co.*
Date *August 27, 1972*

I hereby certify that the well location shown on this plat was plotted from field notes of actual surveys made by me or under my supervision, and that the same is true and correct to the best of my knowledge and belief.

Date Surveyed
JULY 29, 1972

Registered Professional Engineer and/or Land Surveyor

John W. West
Certificate No. **676**

RECEIVED

AUG 20 1972

OIL CONSERVATION COM
HOBBS, N. M.

ENVIRONMENT CONSIDERATION STATEMENT

Application to Drill on Federal Leases

The attached plat shows the existing roads and, by red coloring, the proposed roads to service the proposed well. The plat also shows the location of tank battery and flowlines. There are no camps or airstrips contemplated to serve this lease.

Litter, such as paper, scrap iron, etc., will be picked up and hauled away. Salt water and other undesirable liquids will be picked up for disposal in approved disposal wells. Mud, drill cuttings, and other inert material will be disposed of by burying in the reserve pit when it is abandoned and the surface restored to level condition.

The second plat shows the proposed layout of the drilling rig in relation to the pad and shows the location of mud tanks, reserve pits, pipe racks, etc.

() Water will be hauled to the location.

(X) A flowline will be laid from the battery to the well and will be used to furnish water during drilling operations and then will be used to handle the well's production following completion.

