

UNITED STATES
DEPARTMENT OF THE INTERIOR
GEOLOGICAL SURVEY

APPLICATION FOR PERMIT TO DRILL, DEEPEN, OR PLUG BACK

1a. TYPE OF WORK

DRILL ☒

DEEPEN ☐

PLUG BACK ☐

b. TYPE OF WELL

OIL WELL ☒

GAS WELL ☐

OTHER

SINGLE ZONE ☒

MULTIPLE ZONE ☐

2. NAME OF OPERATOR

Continental Oil Company

3. ADDRESS OF OPERATOR

Box 460 Hobbs, New Mexico

4. LOCATION OF WELL (Report location clearly and in accordance with any State requirements.)*

At surface

1345' FSL and 1380' FWL of Sec 30

At proposed prod. zone

Same

14. DISTANCE IN MILES AND DIRECTION FROM NEAREST TOWN OR POST OFFICE*

10. DISTANCE FROM PROPOSED*

LOCATION TO NEAREST PROPERTY OR LEASE LINE, FT. (Also to nearest drlg. unit line, if any)

16. NO. OF ACRES IN LEASE

7853

17. NO. OF ACRES ASSIGNED TO THIS WELL

40

18. DISTANCE FROM PROPOSED LOCATION* TO NEAREST WELL, DRILLING, COMPLETED, OR APPLIED FOR, ON THIS LEASE, FT.

19. PROPOSED DEPTH

4080'

20. ROTARY OR CABLE TOOLS

rotary

21. ELEVATIONS (Show whether DF, RT, GR, etc.)

3890' est gr

22. APPROX. DATE WORK WILL START*

9-12-72

23.

PROPOSED CASING AND CEMENTING PROGRAM

SIZE OF HOLE	SIZE OF CASING	WEIGHT PER FOOT	SETTING DEPTH	QUANTITY OF CEMENT
12 1/4"	8 5/8" H-40	20#	800'	Circ - 400 sacks
7 7/8"	5 1/2" J-55	14#	4080'	300 sacks

It is proposed to drill a straight hole to a TD of 4080' and complete as a Grayburg San Andres producer. Monarch location of this well was approved by Admin. order NSL-568 of the NMOCC. Sufficient flowout preventer will be installed prior to drilling.

mud program - 0-800' (8.5 - 9.5# Spud mud) and 800' - 4080' - 9.5 - 10.5# Salt gel. Existing roads will be used. V-door of drilling rig will face to the east. The drilling pod will be 180' x 130' and the pits 200' x 200'.

IN ABOVE SPACE DESCRIBE PROPOSED PROGRAM: If proposal is to deepen or plug back, give data on present productive zone and proposed new productive zone. If proposal is to drill or deepen directionally, give pertinent data on subsurface locations and measured and true vertical depths. Give blowout preventer program, if any.

24.

SIGNED

Robert Gault

TITLE

Admin. Supervisor

DATE

8-23-72

(This space for Federal or State office use)

PERMIT NO.

APPROVAL DATE

APPROVED BY

CONDITIONS OF APPROVAL, IF ANY:

TITLE

APPROVED

AUG 24 1972

ARTHUR R. BROWN
DISTRICT ENGINEER

*See Instructions On Reverse Side

RECEIVED

APR 21 1972

U.S. SENATE
HOBBS, N. M.

NEW MEXICO OIL CONSERVATION COMMISSION
WELL LOCATION AND ACREAGE DEDICATION PLAT

Form C-102
Supersedes C-128
Effective 1-1-65

All distances must be from the outer boundaries of the Section.

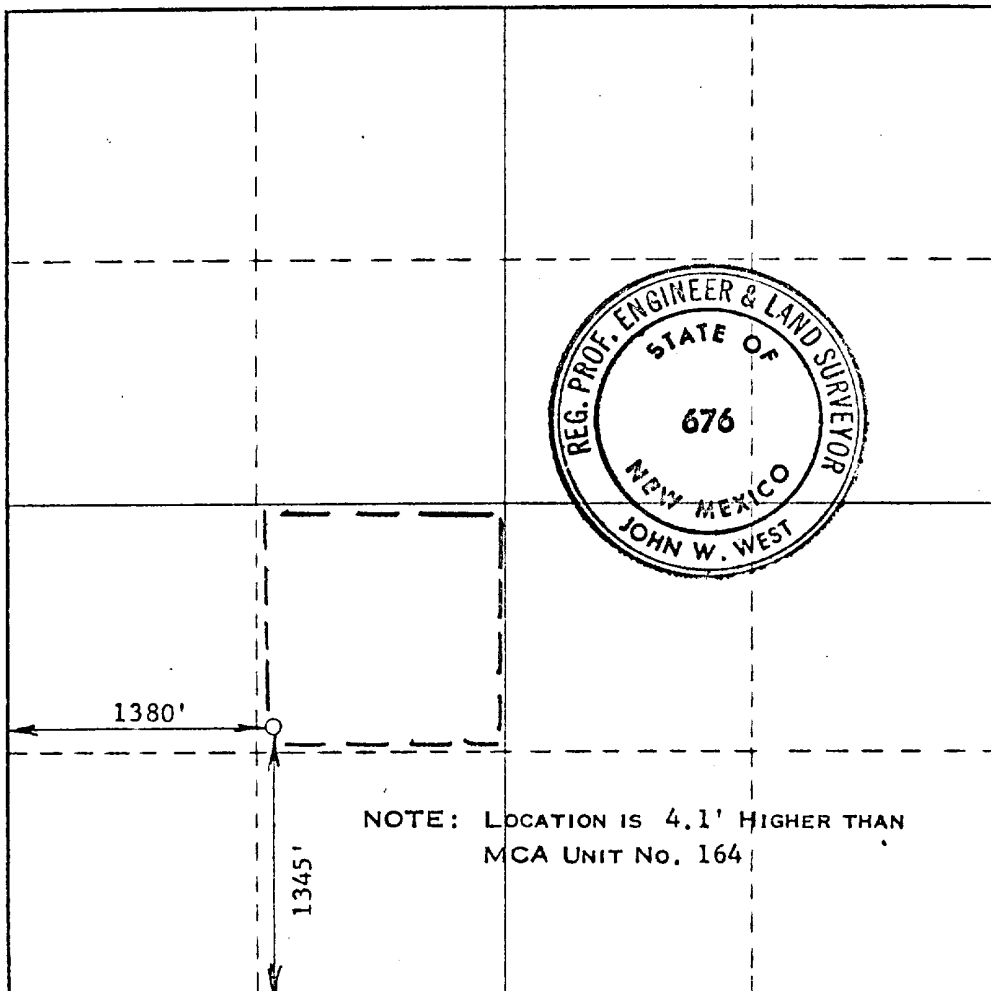
Operator CONTINENTAL OIL CO.			Lease MCA UNIT		Well No. 323
Unit Letter K	Section 30	Township 17 SOUTH	Range 32 EAST	County LEA	
Actual Footage Location of Well: 1345 feet from the SOUTH line and 1380 feet from the WEST line					
Ground Level Elev.	Producing Formation <i>Greyburg Sandstone</i>		Pool <i>Maj G-5A Repres</i>		Dedicated Acreage: 40

1. Outline the acreage dedicated to the subject well by colored pencil or hachure marks on the plat below.
2. If more than one lease is dedicated to the well, outline each and identify the ownership thereof (both as to working interest and royalty).
3. If more than one lease of different ownership is dedicated to the well, have the interests of all owners been consolidated by communitization, unitization, force-pooling, etc?

☐ Yes ☐ No If answer is "yes," type of consolidation _____

If answer is "no," list the owners and tract descriptions which have actually been consolidated. (Use reverse side of this form if necessary.) _____

No allowable will be assigned to the well until all interests have been consolidated (by communitization, unitization, forced-pooling, or otherwise) or until a non-standard unit, eliminating such interests, has been approved by the Commission.



CERTIFICATION

I hereby certify that the information contained herein is true and complete to the best of my knowledge and belief.

Name *Robert Gault*
Position *Admin. Supervisor*
Company *Continental Oil Co.*
Date *August 23, 1972*

I hereby certify that the well location shown on this plat was plotted from field notes of actual surveys made by me or under my supervision, and that the same is true and correct to the best of my knowledge and belief.

Date Surveyed
JULY 29, 1972
Registered Professional Engineer and/or Land Surveyor

John W. West
Certificate No. **676**

RECEIVED

AUG 21 1972

OIL CONSERVATION COMM.
HOUSTON, N. H.

ENVIRONMENT CONSIDERATION STATEMENT

Application to Drill on Federal Leases

The attached plat shows the existing roads and, by red coloring, the proposed roads to service the proposed well. The plat also shows the location of tank battery and flowlines. There are no camps or airstrips contemplated to serve this lease.

Litter, such as paper, scrap iron, etc., will be picked up and hauled away. Salt water and other undesirable liquids will be picked up for disposal in approved disposal wells. Mud, drill cuttings, and other inert material will be disposed of by burying in the reserve pit when it is abandoned and the surface restored to level condition.

The second plat shows the proposed layout of the drilling rig in relation to the pad and shows the location of mud tanks, reserve pits, pipe racks, etc.

