

UNITED STATES  
DEPARTMENT OF THE INTERIOR  
GEOLOGICAL SURVEY

APPLICATION FOR PERMIT TO DRILL, DEEPEN, OR PLUG BACK

1a. TYPE OF WORK  
DRILL ☒ DEEPEN ☐ PLUG BACK ☐

b. TYPE OF WELL  
OIL WELL ☒ GAS WELL ☐ OTHER ☐ SINGLE ZONE ☒ MULTIPLE ZONE ☐

2. NAME OF OPERATOR  
*Continental Oil Company*

3. ADDRESS OF OPERATOR  
*Box 460 Hobbs, N. Mexico*

4. LOCATION OF WELL (Report location clearly and in accordance with any State requirements.)  
At surface  
*1345' FSL and 1295' FEL of Sec 22*  
At proposed prod. zone  
*Same*

14. DISTANCE IN MILES AND DIRECTION FROM NEAREST TOWN OR POST OFFICE\*

5. LEASE DESIGNATION AND SERIAL NO.  
*LC 058395*  
*LC-029509(b)*

6. IF INDIAN, ALLOTTEE OR TRIBE NAME

7. UNIT AGREEMENT NAME  
*MCA*

8. FARM OR LEASE NAME  
*MCA Unit*

9. WELL NO.  
*325*

10. FIELD AND POOL, OR WILDCAT  
*Mel G-SA Repress*

11. SEC. T., R., M., OR BLK. AND SURVEY OR AREA  
*Sec 22, T-17S, R-32E*

12. COUNTY OR PARISH  
*Lea*

13. STATE  
*N. Mexico*

15. DISTANCE FROM PROPOSED\* LOCATION TO NEAREST PROPERTY OR LEASE LINE, FT. (Also to nearest drig. unit line, if any)

16. NO. OF ACRES IN LEASE  
*7853*

17. NO. OF ACRES ASSIGNED TO THIS WELL  
*40*

18. DISTANCE FROM PROPOSED LOCATION\* TO NEAREST WELL, DRILLING, COMPLETED, OR APPLIED FOR, ON THIS LEASE, FT.

19. PROPOSED DEPTH  
*4175'*

20. ROTARY OR CABLE TOOLS  
*Rotary*

21. ELEVATIONS (Show whether DF, RT, GR, etc.)  
*3990' - est gr*

22. APPROX. DATE WORK WILL START\*  
*9-10-72*

23. PROPOSED CASING AND CEMENTING PROGRAM

SIZE OF HOLE	SIZE OF CASING	WEIGHT PER FOOT	SETTING DEPTH	QUANTITY OF CEMENT
<i>12 1/4"</i>	<i>8 5/8", H-46</i>	<i>20 #</i>	<i>900'</i>	<i>Circ - 450 sacks</i>
<i>7 7/8"</i>	<i>5 1/2", J-55</i>	<i>14 #</i>	<i>4175'</i>	<i>300 sacks</i>

It is proposed to drill a straight hole to a TD of 4175 and complete as a Grayburg Son Andrus producer. Sufficient blowout preventer will be installed. Mud program (0-900' 8.5-9.5 # Spud mud and 900'-4175'-9.5-10.5 # Salt gel). Unorthodox location of well was approved by NMOC Admin. order NSL-568. V-door of drilling rig will face to the east. The drilling pod is 180' x 130' and the pits will be 200' 200'.

IN ABOVE SPACE DESCRIBE PROPOSED PROGRAM: If proposal is to deepen or plug back, give data on present productive zone and proposed new productive zone. If proposal is to drill or deepen directionally, give pertinent data on subsurface locations and measured and true vertical depths. Give blowout preventer program, if any.

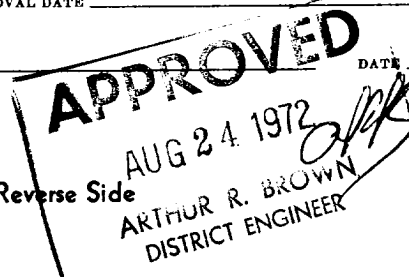
24. SIGNED *Robert Gault III* TITLE *Admin. Supervisor* DATE *8-22-72*

(This space for Federal or State office use)

PERMIT NO. \_\_\_\_\_ APPROVAL DATE \_\_\_\_\_

APPROVED BY \_\_\_\_\_ TITLE \_\_\_\_\_ DATE \_\_\_\_\_

CONDITIONS OF APPROVAL, IF ANY:



\*See Instructions On Reverse Side

USG (5) MCA (3) File

RECEIVED

AUG 20 1972

OIL CONSERVATION COMM.  
HOBBS, N. M.

**NEW MEXICO OIL CONSERVATION COMMISSION  
WELL LOCATION AND ACREAGE DEDICATION PLAT**

Form C-102  
Supersedes C-128  
Effective 1-1-65

All distances must be from the outer boundaries of the Section.

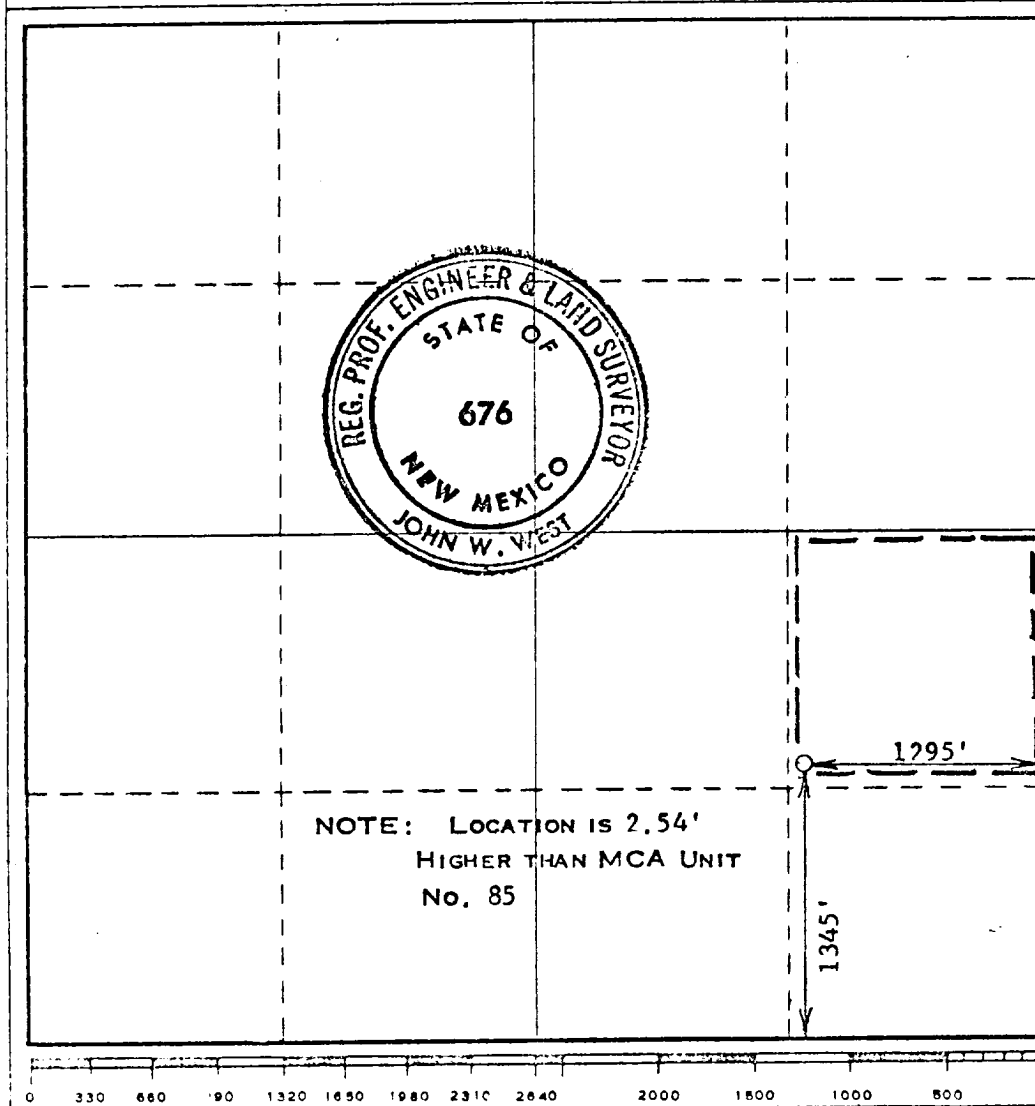
Operator <b>CONTINENTAL OIL CO.</b>			Lease <b>MCA UNIT</b>		Well No. <b>325</b>
Unit Letter <b>1</b>	Section <b>22</b>	Township <b>17 SOUTH</b>	Range <b>32 EAST</b>	County <b>LEA</b>	
Actual Footage Location of Well: <b>1345</b> feet from the <b>SOUTH</b> line and <b>1295</b> feet from the <b>EAST</b> line					
Ground Level Elev.	Producing Formation <i>Grayburg San Andres</i>			Pool <i>Malj G-SA Repress</i>	Dedicated Acreage: <b>40</b> Acres

1. Outline the acreage dedicated to the subject well by colored pencil or hachure marks on the plat below.
2. If more than one lease is dedicated to the well, outline each and identify the ownership thereof (both as to working interest and royalty).
3. If more than one lease of different ownership is dedicated to the well, have the interests of all owners been consolidated by communitization, unitization, force-pooling, etc?

☐ Yes    ☐ No    If answer is "yes," type of consolidation \_\_\_\_\_

If answer is "no," list the owners and tract descriptions which have actually been consolidated. (Use reverse side of this form if necessary.) \_\_\_\_\_

No allowable will be assigned to the well until all interests have been consolidated (by communitization, unitization, forced-pooling, or otherwise) or until a non-standard unit, eliminating such interests, has been approved by the Commission.



**CERTIFICATION**

I hereby certify that the information contained herein is true and complete to the best of my knowledge and belief.

Name *Robert Gaultier*  
 Position *Admin. Supervisor*  
 Company *Continental Oil Co.*  
 Date *August 27, 1972*

I hereby certify that the well location shown on this plat was plotted from field notes of actual surveys made by me or under my supervision, and that the same is true and correct to the best of my knowledge and belief.

Date Surveyed **JULY 29, 1972**  
 Registered Professional Engineer and/or Land Surveyor

*John W. West*  
 Certificate No. **676**

RECEIVED

AUG 28 1972

OIL CONSERVATION COMM.  
HOBBBS, N. M.

## ENVIRONMENT CONSIDERATION STATEMENT

### Application to Drill on Federal Leases

The attached plat shows the existing roads and, by red coloring, the proposed roads to service the proposed well. The plat also shows the location of tank battery and flowlines. There are no camps or airstrips contemplated to serve this lease.

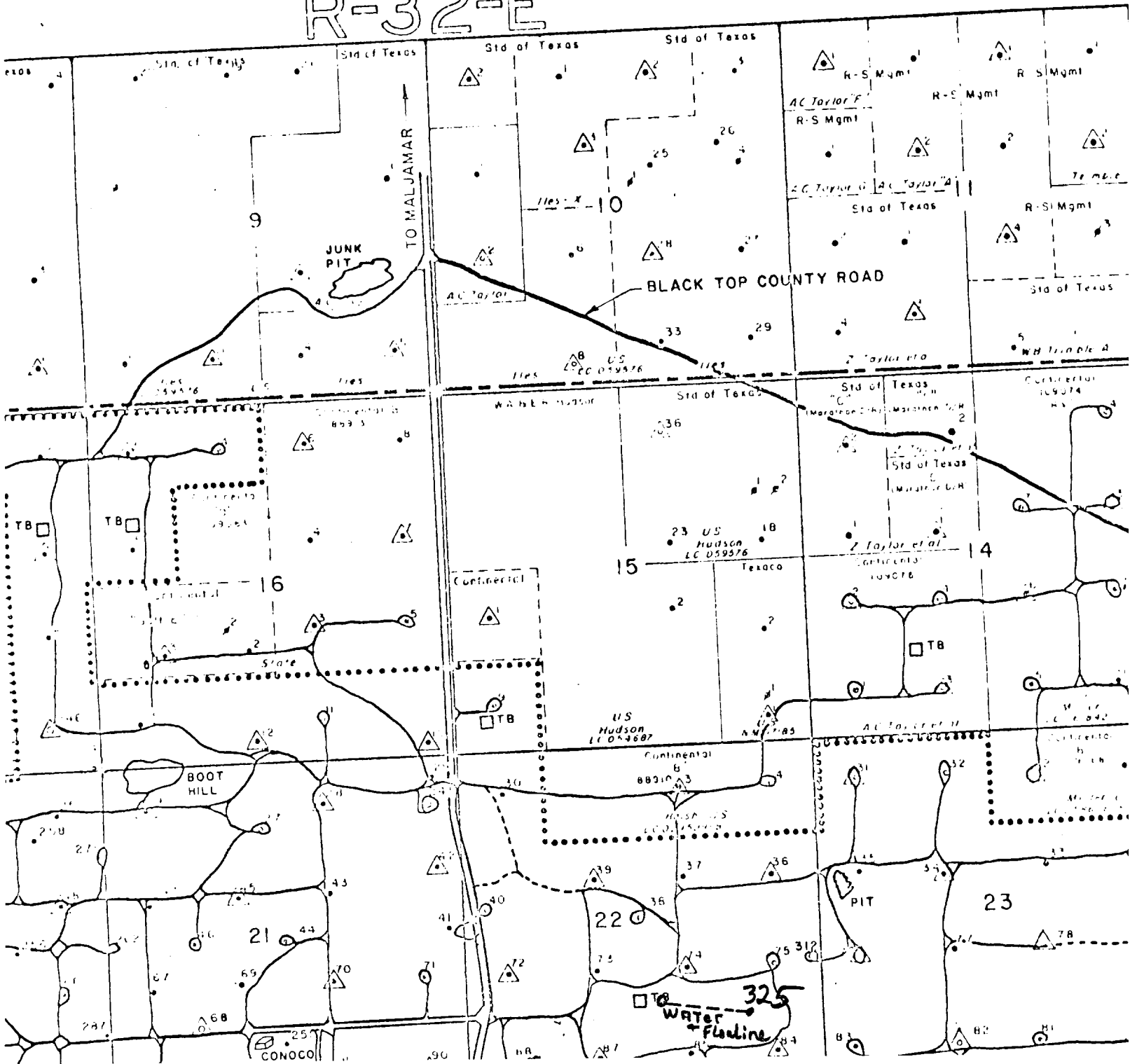
Litter, such as paper, scrap iron, etc., will be picked up and hauled away. Salt water and other undesirable liquids will be picked up for disposal in approved disposal wells. Mud, drill cuttings, and other inert material will be disposed of by burying in the reserve pit when it is abandoned and the surface restored to level condition.

The second plat shows the proposed layout of the drilling rig in relation to the pad and shows the location of mud tanks, reserve pits, pipe racks, etc.

( ) Water will be hauled to the location.

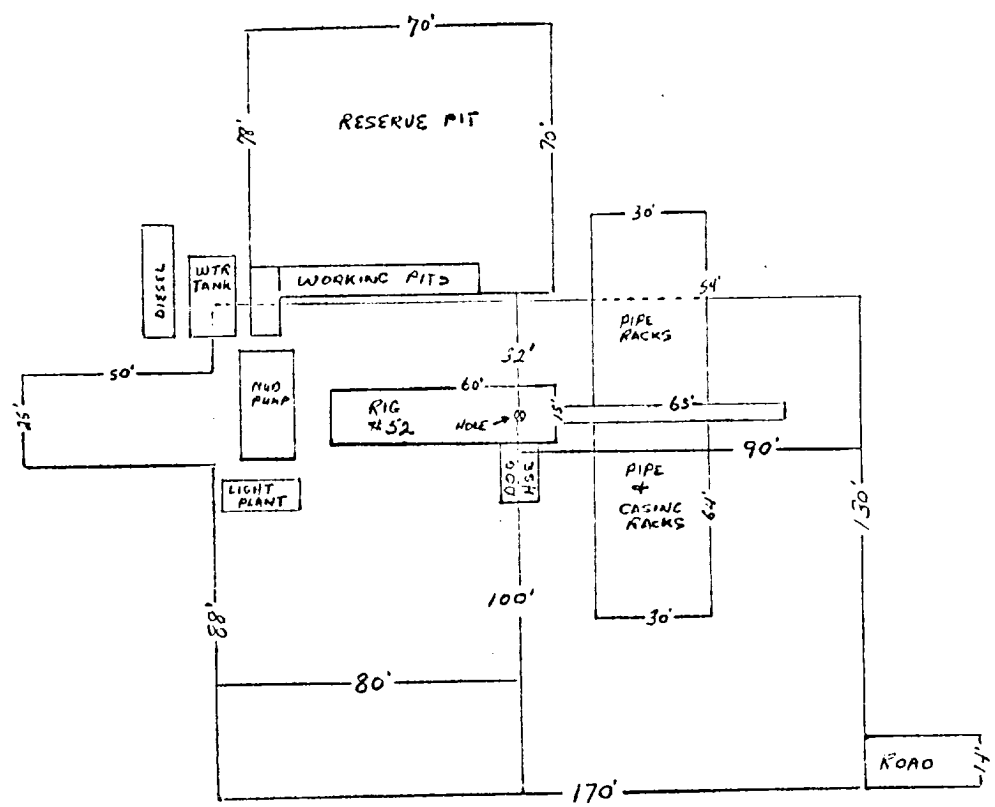
X A flowline will be laid from the battery to the well and will be used to furnish water during drilling operations and then will be used to handle the wells' production following completion.

R-32-E



CACTUS DRILLING CO.  
RIG # 52

CONTINENTAL OIL CO.  
MCA UNIT  
MALJAMAR WATER FLOOD  
LEA CO., NEW MEXICO



LOCATION:  
130' - N to S  
170' - E to W

HOLE: 30' FNL  
80' FWL  
100' FSL  
90' FEL

25' X 50' STINGER ON WEST SIDE  
OF LOCATION FOR TRAILER MTD RIG.

3/16 INCH = 10 FOOT