

NO. OF COPIES RECEIVED	
DISTRIBUTION	
SANTA FE	
FILE	
U.S.G.S.	
LAND OFFICE	
OPERATOR	

# NEW MEXICO OIL CONSERVATION COMMISSION

Form C-101  
Revised 1-1-65 *3-075-243-6*

5A. Indicate Type of Lease	
STAT <input checked="" type="checkbox"/>	FEE <input type="checkbox"/>
5. State Oil & Gas Lease No. <b>K-4182</b>	

## APPLICATION FOR PERMIT TO DRILL, DEEPEN, OR PLUG BACK

1a. Type of Work		7. Unit Agreement Name	
b. Type of Well OIL WELL <input checked="" type="checkbox"/> GAS WELL <input type="checkbox"/> OTHER <input type="checkbox"/>		8. Farm or Lease Name <b>Sum-State 2</b>	
2. Name of Operator <b>Skelly Oil Company</b>		9. Well No. <b>1</b>	
3. Address of Operator <b>P. O. Box 1351, Midland, Texas 79701</b>		10. Field and Pool, or Wildcat <b>UNDESIGNATED</b>	
4. Location of Well UNIT LETTER <b>D</b> LOCATED <b>960</b> FEET FROM THE <b>North</b> LINE AND <b>760</b> FEET FROM THE <b>West</b> LINE OF SEC. <b>2</b> TWP. <b>17S</b> RGE. <b>33E</b> NMPM		12. County <b>Lea</b>	
19. Proposed Depth <b>11,700'</b>		19A. Formation <b>Canyon</b>	
20. Rotary or C.T. <b>Rotary</b>		21. Elevations (Show whether DF, RT, etc.) <b>Unknown</b>	
21A. Kind & Status Plug. Bond <b>Blanket Bond #1253688 To be selected</b>		22. Approx. Date Work will start <b>March 16, 1973</b>	
21B. Drilling Contractor <b>\$100,000 w/Fed. Ins. Co.</b>		23. PROPOSED CASING AND CEMENT PROGRAM	

SIZE OF HOLE	SIZE OF CASING	WEIGHT PER FOOT	SETTING DEPTH	SACKS OF CEMENT	EST. TOP
17-1/2"	13-3/8"	54.5#	375'	400	Surface
11"	8-5/8"	32#	4600'	2000	Surface
7-7/8"	5-1/2"	17# & 20#	11,700'	600	4500'

We propose to drill with rotary tools from surface to a total depth of 11,700' in the Canyon formation. The pump and plug process will be used in cementing all strings of casing. The 13-3/8" casing will be set at 375' and cemented to surface. The 8-5/8" casing will be set at 4600' and cemented to surface. The 5-1/2" casing will be set at TD and cemented to approximately 4500' behind casing. The Canyon formation will be perforated at approximately 11,650-11,700'.

The drilling fluid will be brine water with sufficient gel to condition the hole for logging and running casing. Blow out preventer will be installed and tested to 5000#.

APPROVAL VALID  
FOR 90 DAYS UNLESS  
DRILLING COMMENCED,

EXPIRES June 10, 1973

IN ABOVE SPACE DESCRIBE PROPOSED PROGRAM: IF PROPOSAL IS TO DEEPEN OR PLUG BACK, GIVE DATA ON PRESENT PRODUCTIVE ZONE AND PROPOSED NEW PRODUCTIVE ZONE. GIVE BLOWOUT PREVENTER PROGRAM, IF ANY.

I hereby certify that the information above is true and complete to the best of my knowledge and belief.

(Signed) J. R. Avent J. R. Avent Title Dist. Admin. Coordinator Date March 9, 1973

(This space for State Use)

APPROVED BY John W. Runyan TITLE State Engineer DATE March 10, 1973

CONDITIONS OF APPROVAL, IF ANY:

REPORT FOR THE YEAR  
1954

REPORT FOR THE YEAR

**NEW MEXICO OIL CONSERVATION COMMISSION  
WELL LOCATION AND ACREAGE DEDICATION PLAT**

Form C-102  
Supersedes C-128  
Effective 1-1-65

All distances must be from the outer boundaries of the Section.

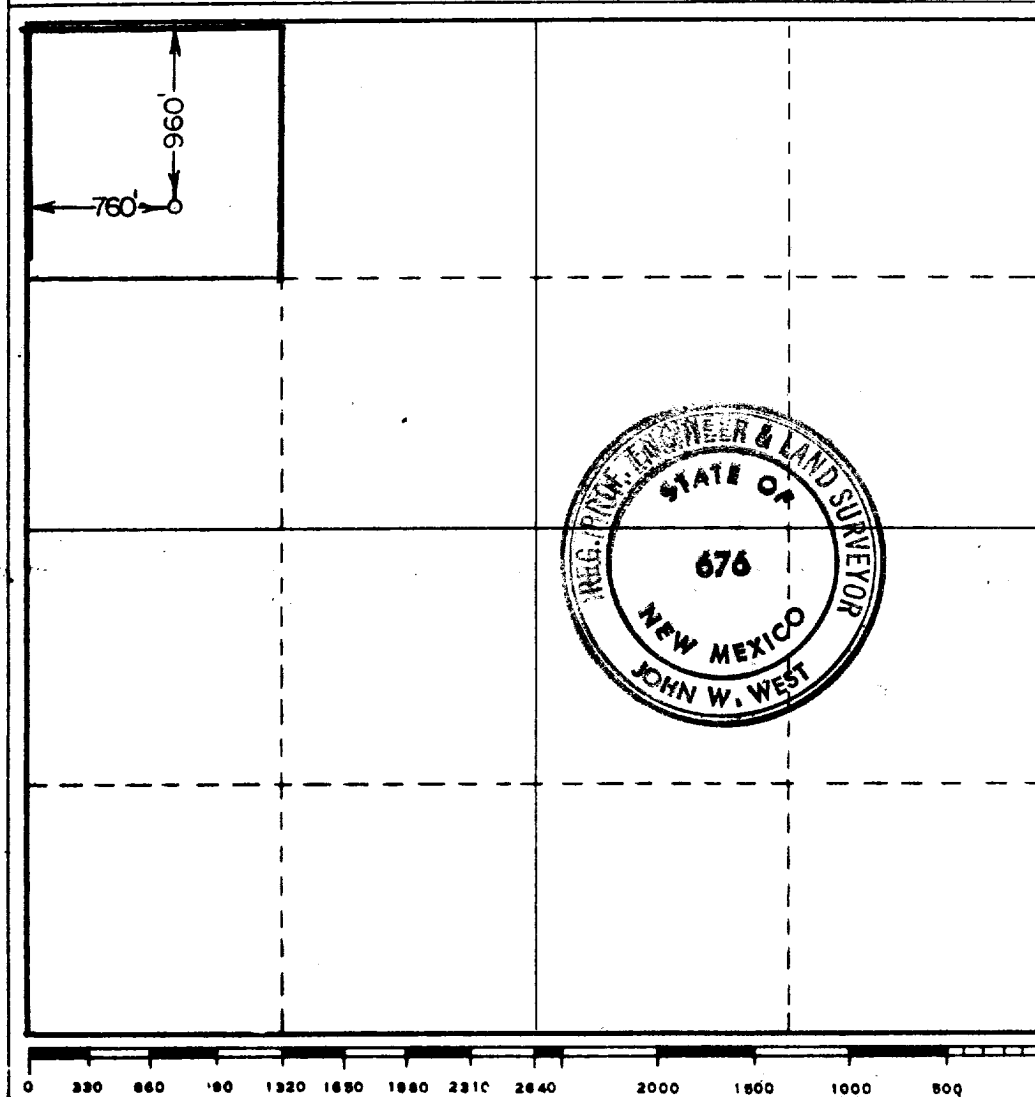
Operator <b>SKELLY OIL COMPANY</b>			Lease <b>SUN-DRIER 2 State</b> <del>SUN-DRIER 2 STATE</del>		Well No. <b>1</b>
Unit Letter <b>D</b>	Section <b>2</b>	Township <b>17 SOUTH</b>	Range <b>33 EAST</b>	County <b>LEA</b>	
Actual Footage Location of Well: <b>960</b> feet from the <b>NORTH</b> line and <b>760</b> feet from the <b>WEST</b> line					
Ground Level Elev. <b>Unknown</b>	Producing Formation <b>Canyon</b>	Pool <b>UNDESIGNATED</b>		Dedicated Acreage: <b>40</b> (40.30) Acres	

1. Outline the acreage dedicated to the subject well by colored pencil or hatchure marks on the plat below.
2. If more than one lease is dedicated to the well, outline each and identify the ownership thereof (both as to working interest and royalty).
3. If more than one lease of different ownership is dedicated to the well, have the interests of all owners been consolidated by communitization, unitization, force-pooling, etc?

☐ Yes    ☐ No    If answer is "yes," type of consolidation \_\_\_\_\_

If answer is "no," list the owners and tract descriptions which have actually been consolidated. (Use reverse side of this form if necessary.) \_\_\_\_\_

No allowable will be assigned to the well until all interests have been consolidated (by communitization, unitization, forced-pooling, or otherwise) or until a non-standard unit, eliminating such interests, has been approved by the Commission.



<b>CERTIFICATION</b>	
I hereby certify that the information contained herein is true and complete to the best of my knowledge and belief.	
Name	<b>J. R. Avent</b>
Position	<b>Dist. Administrative Coord.</b>
Company	<b>Skelly Oil Company</b>
Date	<b>March 9, 1973</b>
I hereby certify that the well location shown on this plat was plotted from field notes of actual surveys made by me or under my supervision, and that the same is true and correct to the best of my knowledge and belief.	
Date Surveyed	<b>3-10-73</b>
Registered Professional Engineer and/or Land Surveyor	
<b>John W. West</b>	
Certificate No.	<b>676</b>

111

111  
111 111 111 111 111  
111 111 111 111 111