

District I  
1625 N. French Dr., Hobbs, NM 88240  
District II  
811 South First, Artesia, NM 88210  
District III  
1000 Rio Brazos Road, Aztec, NM 87410  
District IV  
2040 South Pacheco, Santa Fe, NM 87505

State of New Mexico  
Energy Minerals and Natural Resources

Form C-101  
Revised March 17, 1999

Oil Conservation Division  
2040 South Pacheco  
Santa Fe, NM 87505

Submit to appropriate District Office  
State Lease - 6 Copies  
Fee Lease - 5 Copies

☐ AMENDED REPORT

APPLICATION FOR PERMIT TO DRILL, RE-ENTER, DEEPEN, PLUGBACK, OR ADD A ZONE

Operator Name and Address C.W. Trainer c/o Oil Reports & Gas Services, Inc. 1008 W. Broadway, Hobbs, NM 88240		OGRID Number 003474
Property Code 3/16-1		API Number 30-025-24582
Property Name Nancy		Well No. 1

Surface Location

UL or lot no.	Section	Township	Range	Lot Idn	Feet from the	North/South line	Feet from the	East/West line	County
F	5	15S	34E		2144	North	1874	West	Lea

Proposed Bottom Hole Location If Different From Surface

UL or lot no.	Section	Township	Range	Lot Idn	Feet from the	North/South line	Feet from the	East/West line	County
F	5	15S	34E		2144	North	1874	West	Lea
The Papalotes, Penn Proposed Pool 1 Wildcat					Proposed Pool 2				

Work Type Code E	Well Type Code O	Cable/Rotary Pulling Unit	Lease Type Code P	Ground Level Elevation 4127 GR
Multiple No	Proposed Depth 11,000	Formation Penn	Contractor Pet. Tech. Services	Spud Date ASAP

Proposed Casing and Cement Program

Hole Size	Casing Size	Casing weight/foot	Setting Depth	Sacks of Cement	Estimated TOC
		See Original Program			

Describe the proposed program. If this application is to DEEPEN or PLUG BACK, give the data on the present productive zone and proposed new productive zone. Describe the blowout prevention program, if any. Use additional sheets if necessary. Well P&A'd 1/5/85

Re-entry is proposed by drilling out plugs set at 10,140-10,008, 8050-7850, 5975-5775, 4550-4200, 2600-2500, 1900-1800, 827, 437 & 50'. and deepen to 10,850 to Lower Penn zones. Set 4" flush joint liner and test and complete.

I hereby certify that the information given above is true and complete to the best of my knowledge and belief.

Signature:

Gaye Heard

Printed name: Gaye Heard

Title: Agent

Date:

1/15/03

Phone:

505/393-2727

OIL CONSERVATION DIVISION

Approved by:

Title:

Approval Date:

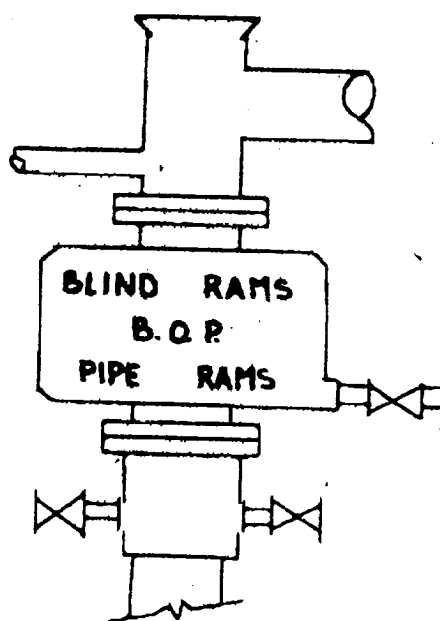
Conditions of Approval:

Attached ☐

Expiration Date:

JAN 17 2003

PETROLEUM ENGINEER



B.O.P. Hook up on 8 5/8" Csg.

3000 Psi W.P.

C. W. Trainer  
Re-entry - Nancy Well  
Wildcat - Lea County, New Mexico

FIGURE 2

DISTRICT I  
P.O. Box 1930, Hobbs, NM 88241-1930

State of New Mexico

Energy, Minerals and Natural Resources Department

Form C-102

Revised February 10, 1994

Submit to Appropriate District Office

State Lease - 4 Copies

Fee Lease - 3 Copies

DISTRICT II  
P.O. Drawer DD, Artesia, NM 88211-0719

# OIL CONSERVATION DIVISION

P.O. Box 2088

Santa Fe, New Mexico 87504-2088

DISTRICT III  
1000 Rio Brazos Rd., Aztec, NM 87410

DISTRICT IV  
P.O. BOX 2088, SANTA FE, N.M. 87504-2088

## WELL LOCATION AND ACREAGE DEDICATION PLAT

☐ AMENDED REPORT

API Number 30-025-24552	Pool Code 59511	Pool Name The Goodies Wildeat Penn
Property Code 31060	Property Name NANCY	Well Number 1
OGRID No. 003474	Operator Name C.W. TRAINER	Elevation 4127'

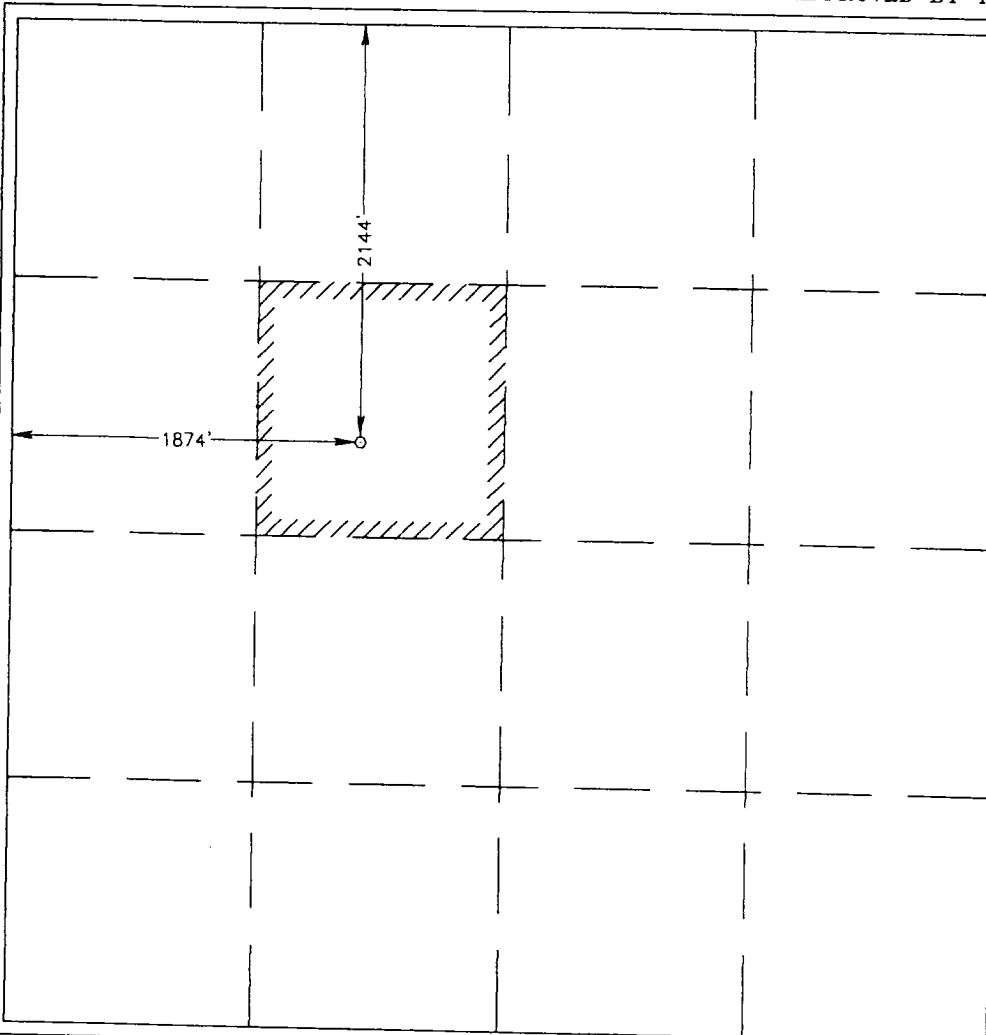
### Surface Location

UL or lot No. F	Section 5	Township 15-S	Range 34-E	Lot Idn	Feet from the 2144	North/South line NORTH	Feet from the 1874	East/West line WEST	County LEA
--------------------	--------------	------------------	---------------	---------	-----------------------	---------------------------	-----------------------	------------------------	---------------

### Bottom Hole Location If Different From Surface

UL or lot No.	Section	Township	Range	Lot Idn	Feet from the	North/South line	Feet from the	East/West line	County
Dedicated Acres 40	Joint or Infill	Consolidation Code	Order No.						

NO ALLOWABLE WILL BE ASSIGNED TO THIS COMPLETION UNTIL ALL INTERESTS HAVE BEEN CONSOLIDATED  
OR A NON-STANDARD UNIT HAS BEEN APPROVED BY THE DIVISION



### OPERATOR CERTIFICATION

I hereby certify the the information  
contained herein is true and complete to the  
best of my knowledge and belief.

*Gaye Heard*  
Signature

Gaye Heard

Printed Name

Agent

Title

1/16/03

Date

### SURVEYOR CERTIFICATION

I hereby certify that the well location shown  
on this plat was plotted from field notes of  
actual surveys made by me or under my  
supervision, and that the same is true and  
correct to the best of my belief.

OCTOBER 25, 1973

Date Surveyed

L.A

Signature & Seal of  
Professional Surveyor

*Ronald J. Eidson* 1/15/03  
03.11.0051

Certificate No. RONALD J. EIDSON 3239  
GARY EIDSON 12641