

NEW MEXICO OIL CONSERVATION COMMISSION
WELL LOCATION AND ACREAGE DEDICATION PLAT

Form C-102
Supersedes C-128
Effective 1-1-65

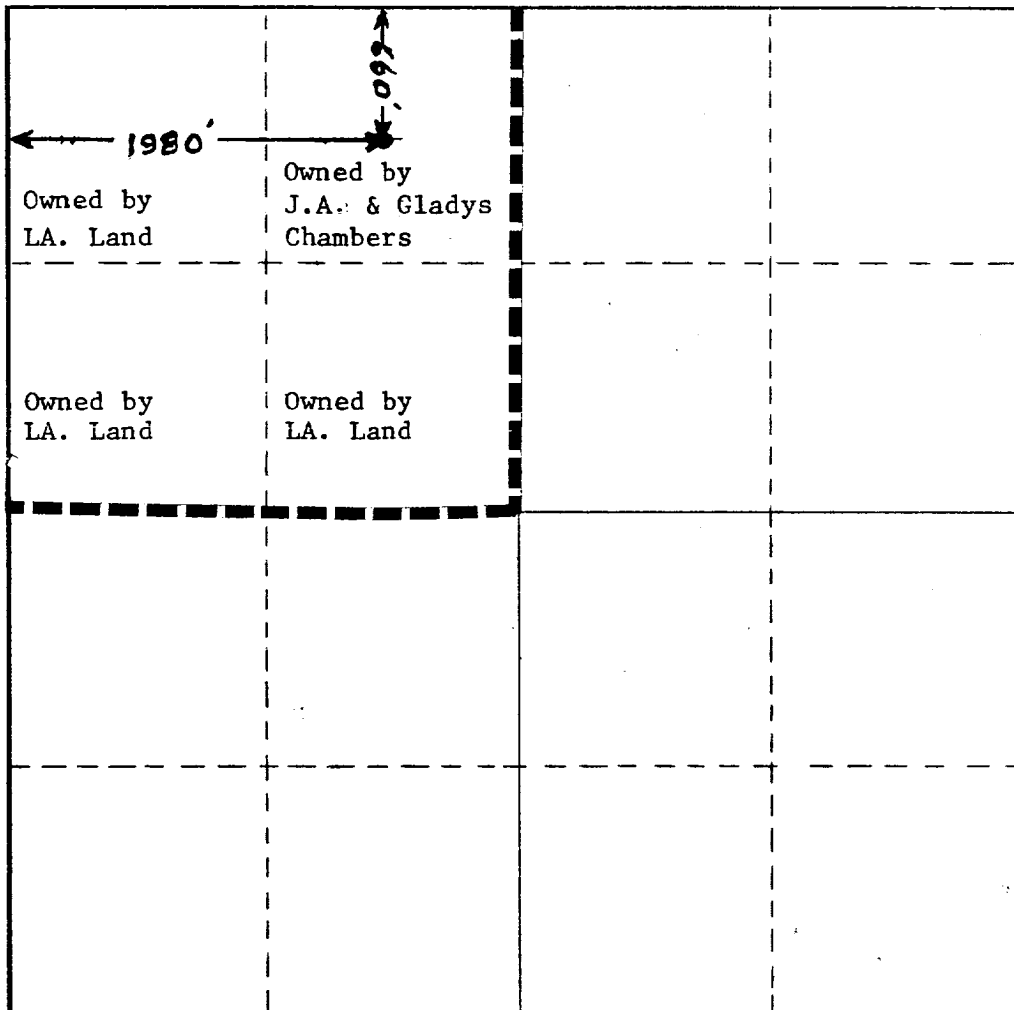
All distances must be from the outer boundaries of the Section.

Operator Western Oil Producers, Inc.			Lease JB&D		Well No. 1
Unit Letter C	Section 24	Township 16S	Range 35E	County Lea	
Actual Footage Location of Well: 660 feet from the North line and 1980 feet from the West line					
Ground Level Elev. 3960	Producing Formation Strawn		Pool North South Shoebar - Strawn		Dedicated Acreage: 160 Acres

1. Outline the acreage dedicated to the subject well by colored pencil or hachure marks on the plat below.
2. If more than one lease is dedicated to the well, outline each and identify the ownership thereof (both as to working interest and royalty).
3. If more than one lease of different ownership is dedicated to the well, have the interests of all owners been consolidated by communitization, unitization, force-pooling, etc?

☐ Yes ☒ No If answer is "yes," type of consolidation: See reverse side

If answer is "no," list the owners and tract descriptions which have actually been consolidated. (Use reverse side of this form if necessary.) W1/2 & SE of NW1/4 owned by LA Land, NE1/4 NW1/4 owned by Chambers, we are now pooling this acreage
No allowable will be assigned to the well until all interests have been consolidated (by communitization, unitization, forced-pooling, or otherwise) or until a non-standard unit, eliminating such interests, has been approved by the Commission.



CERTIFICATION

I hereby certify that the information contained herein is true and complete to the best of my knowledge and belief.

Name Ronald Hewkins
Position
Supt.
Company
Western Oil Producers, Inc.
Date
12-29-86

I hereby certify that the well location shown on this plat was plotted from field notes of actual surveys made by me or under my supervision, and that the same is true and correct to the best of my knowledge and belief.

Please refer to Original

Date Surveyed
Plat
Registered Professional Engineer
and/or Land Surveyor

Certificate No.

0 330 660 990 1320 1650 1980 2310 2640 2000 1500 1000 500 0

This described acreage is owned by Louisiana Land of Houston
& Mr. & Mrs. Chambers of Washington State. We are now in the
process of Pooling this acreage.

RECEIVED
DEC 30 1986
OCD
HOBBS OFFICE