

NEW MEXICO OIL CONSERVATION COMMISSION
WELL LOCATION AND ACREAGE DEDICATION PLAT

APR 24 1974

Form C-102
Supersedes C-128
Effective 1-1-65

All distances must be from the outer boundaries of the Section

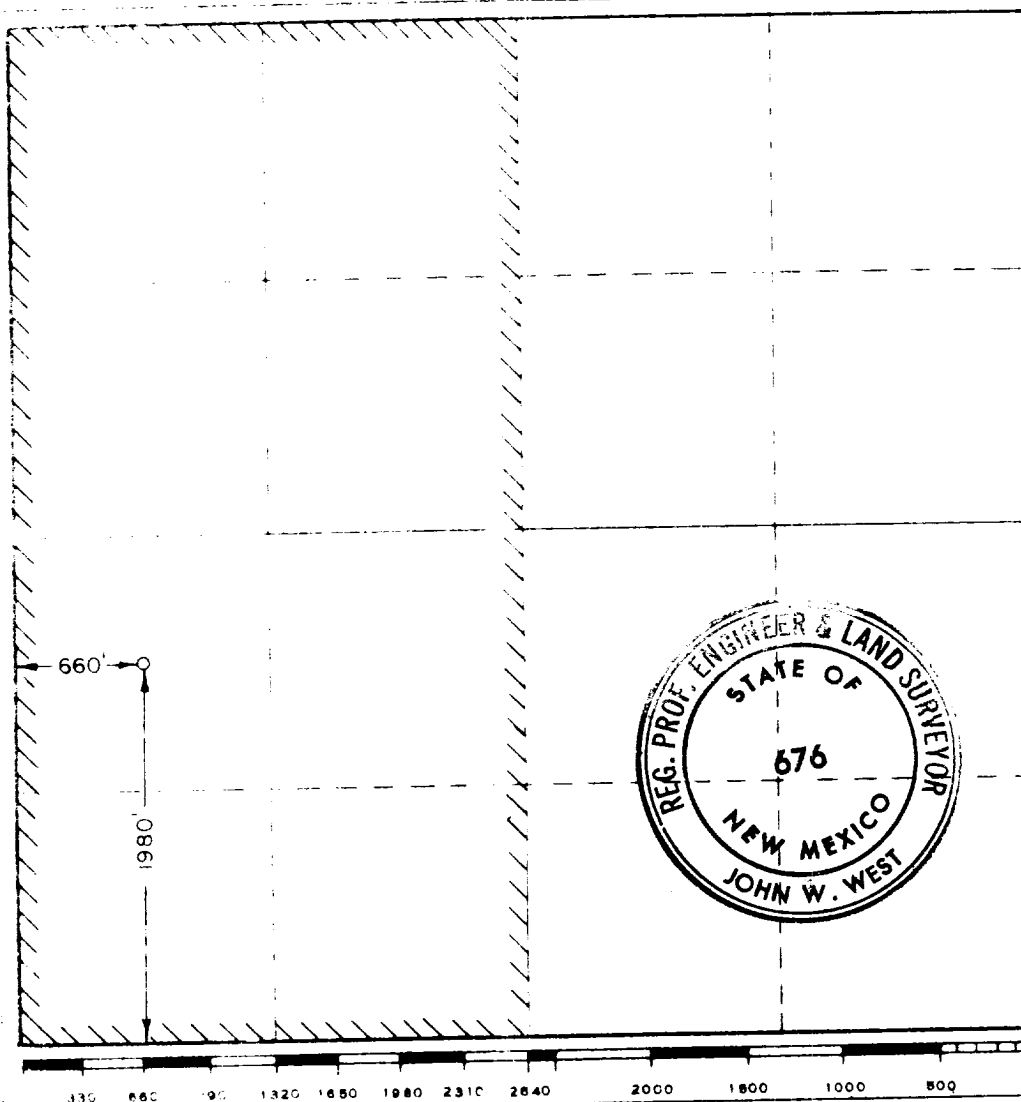
MESA PETROLEUM CO.			Lease		AMA. PROD.	Well No. 1
L	Section 13	Township 16 SOUTH	Range 35 EAST	County LEA		
1980	feet from the	SOUTH	line and	660	feet from the	WEST
3965.5	Containing Fraction	Pool		Dedicated Acreage		
	MORROW	UNDESIGNATED		W 1/2 320 Acres		

- Outline the acreage dedicated to the subject well by colored pencil or hatchure marks on the plat below.
- If more than one lease is dedicated to the well outline each and identify the ownership thereof (both as to working interest and royalty).
- If more than one lease of different ownership is dedicated to the well, have the interests of all owners been consolidated by communitization, unitization, force-pooling, etc?

X Yes No If answer is "yes" type of consolidation Communitization

If answer is "no" list the owners and tract descriptions which have actually been consolidated. (Use reverse side of this form if necessary.)

No allowable will be assigned to the well until all interests have been consolidated (by communitization, unitization, force-pooling, or otherwise) or until a non-standard unit, eliminating such interests, has been approved by the Commission.



CERTIFICATION

I hereby certify that the information contained herein is true and complete to the best of my knowledge and belief.

Michael P. Houston

Name
Michael P. Houston
Position
Production Engineer

Company
Mesa Petroleum Co.

Date
April 24, 1974

I hereby certify that the well location shown on this plat was plotted from field notes of actual surveys made by me or under my supervision, and that the same is true and correct to the best of my knowledge and belief.

Date Surveyed
APRIL 20, 1974

Registered Professional Engineer and/or Land Surveyor

John W. West
Certificate No. 676

173