

NEW MEXICO OIL CONSERVATION COMMISSION
WELL LOCATION AND ACREAGE DEDICATION PL

RECEIVED

Form C-102
Supersedes C-128
Effective 1-1-65

All distances must be from the outer boundaries of the Section

MAY 2 1974

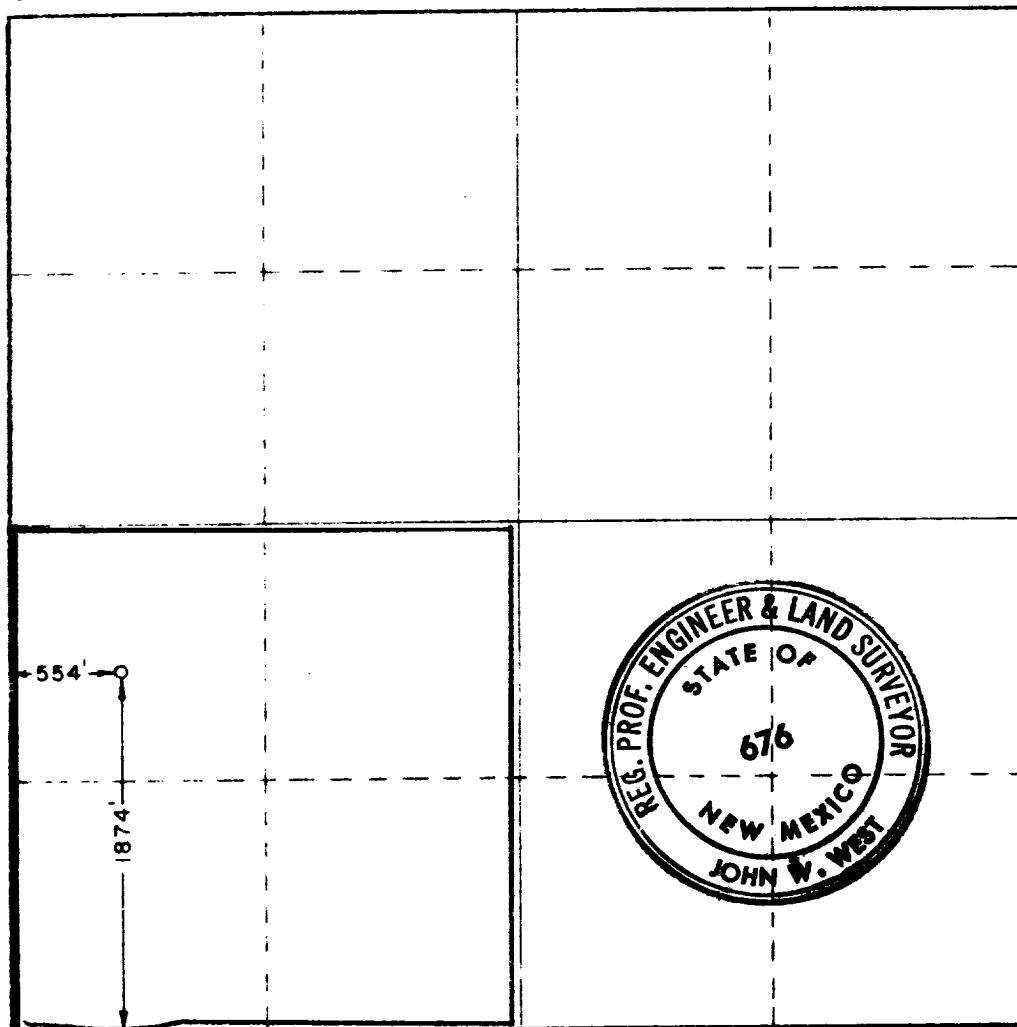
MESA PETROLEUM COMPANY			Lease ALSTON			Section No. 1		
L	Section 8	Township 16 SOUTH	Range 36 EAST	County LEA	AMA. PROD.			
Well Location and Well:								
1874		feet from the SOUTH line and		554		feet from the WEST line		
3938.8		Producing Formation Wolfcamp		Pool Shoe Bar, North		Dedicated Acreage: 160		Acres

- Outline the acreage dedicated to the subject well by colored pencil or hatchure marks on the plat below.
- If more than one lease is dedicated to the well, outline each and identify the ownership thereof (both as to working interest and royalty).
- If more than one lease of different ownership is dedicated to the well, have the interests of all owners been consolidated by communitization, unitization, force-pooling, etc?

☒ Yes ☐ No If answer is "yes," type of consolidation Unitization

If answer is "no," list the owners and tract descriptions which have actually been consolidated. (Use reverse side of this form if necessary.)

No allowable will be assigned to the well until all interests have been consolidated (by communitization, unitization, forced-pooling, or otherwise) or until a non-standard unit, eliminating such interests, has been approved by the Commission.



CERTIFICATION

I hereby certify that the information contained herein is true and complete to the best of my knowledge and belief.

Michael P. Houston

Name

Michael P. Houston

Position

Production Engineer

Company

Mesa Petroleum Co.

Date

May 2, 1974

I hereby certify that the well location shown on this plat was plotted from field notes of actual surveys made by me or under my supervision, and that the same is true and correct to the best of my knowledge and belief.

Date Surveyed

APRIL 30, 1974

Registered Professional Engineer and/or Land Surveyor

John W. West

Certificate No.

676

330 660 990 1320 1650 1980 2310 2640 2970 3300 3630 3960 4290 4620 4950 5280 5610 5940 6270 6600 6930 7260 7590 7920 8250 8580 8910 9240 9570 9900

173

RECEIVED

MAY 3 1974

OIL CONSERVATION COMM.
HOBBS, N. M.