

NEW MEXICO OIL CONSERVATION COMMISSION
WELL LOCATION AND ACREAGE DEDICATION PL

Form C-102
Supersedes C-126
Effective 1-1-65

All distances must be from the outer boundaries of the Section

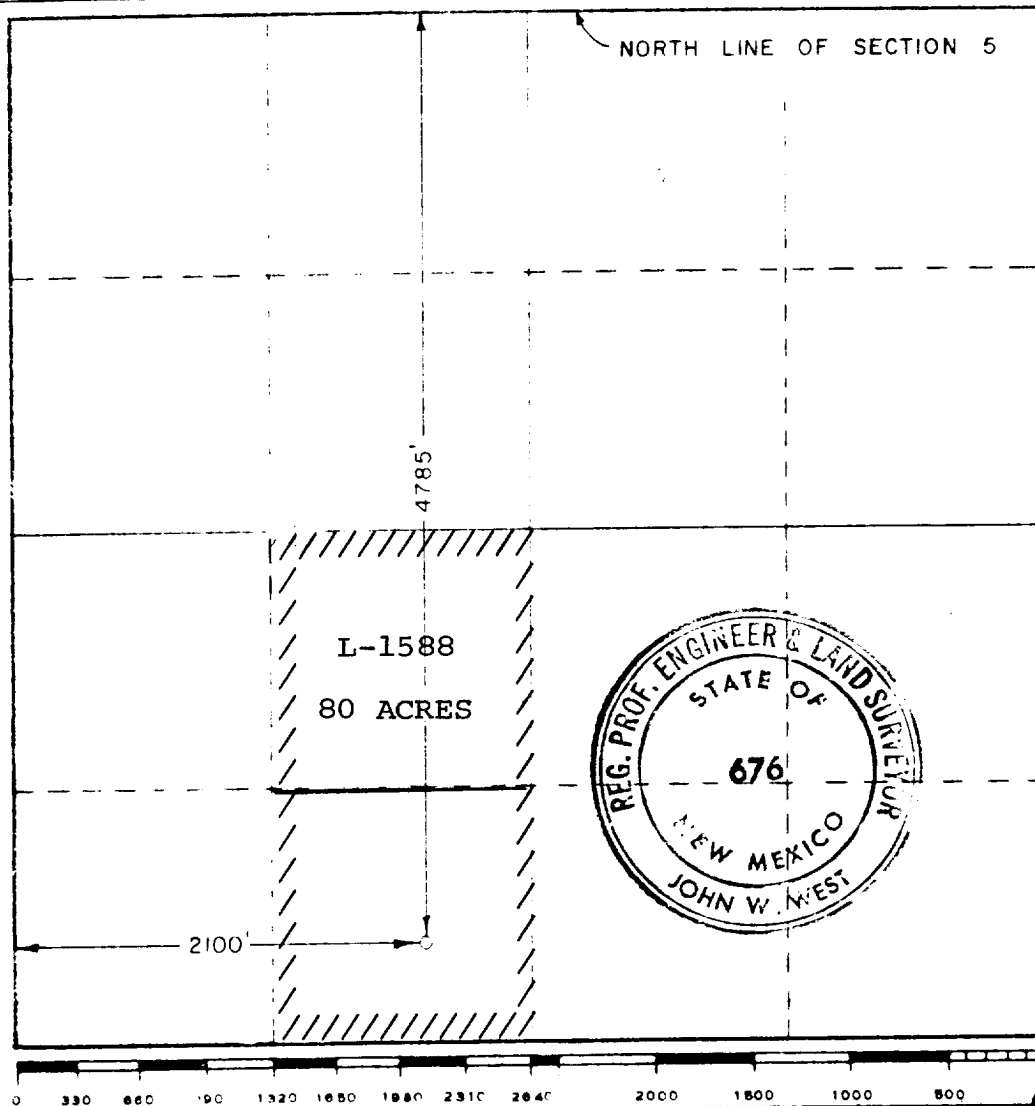
Operator J.M. HUBER CORPORATION		Lease DAN GLADE		Well No. 1
North Quarter N	Section 5	Township 16 SOUTH	Range 35 EAST	County LEA
Actual true location of Well: 4785 feet from the NORTH line and 2100 feet from the WEST line				
Ground Level Elev. 4035.1	Producing Formation Devonian	Pool Undersaturated Wildcat	Dedicated Acreage 80 40 Acres	

- Outline the acreage dedicated to the subject well by colored pencil or hatchure marks on the plat below.
- If more than one lease is dedicated to the well, outline each and identify the ownership thereof (both as to working interest and royalty).
- If more than one lease of different ownership is dedicated to the well, have the interests of all owners been consolidated by communitization, unitization, force-pooling, etc?

☐ Yes ☐ No If answer is "yes," type of consolidation _____

If answer is "no," list the owners and tract descriptions which have actually been consolidated. (Use reverse side of this form if necessary.) _____

No allowable will be assigned to the well until all interests have been consolidated (by communitization, unitization, forced-pooling, or otherwise) or until a non-standard unit, eliminating such interests, has been approved by the Commission.



CERTIFICATION

I hereby certify that the information contained herein is true and complete to the best of my knowledge and belief.

James R. Sutherland
Name

James R. Sutherland

Position

District Prod. Mgr.

Company

J.M. Huber Corporation

Date

June 27, 1974

I hereby certify that the well location shown on this plat was plotted from field notes of actual surveys made by me or under my supervision, and that the same is true and correct to the best of my knowledge and belief.

Date Surveyed

JUNE 15, 1974

Registered Professional Engineer and/or Land Surveyor

John W. West
Signature

676