

Submit 3 Copies To Appropriate District
Office
District I
1625 N. French Dr., Hobbs, NM 87240
District II
811 South First, Artesia, NM 87210
District III
1000 Rio Brazos Rd., Aztec, NM 87410
District IV
2040 South Pacheco, Santa Fe, NM 87505

State of New Mexico
Energy, Minerals and Natural Resources

Form C-103
Revised March 25, 1999

OIL CONSERVATION DIVISION
2040 South Pacheco
Santa Fe, NM 87505

WELL API NO. 30-025-24981
5. Indicate Type of Lease STATE <input checked="" type="checkbox"/> FEE <input type="checkbox"/>
6. State Oil & Gas Lease No. B-2229
7. Lease Name or Unit Agreement Name: Phillips E State
8. Well No. 194
9. Pool name or Wildcat Maljamar Grayburg/San Andres
10. Elevation (Show whether DR, RKB, RT, GR, etc.) 4173' GL & 4183' RKB

SUNDRY NOTICES AND REPORTS ON WELLS
(DO NOT USE THIS FORM FOR PROPOSALS TO DRILL OR TO DEEPEN OR PLUG BACK TO A DIFFERENT RESERVOIR. USE "APPLICATION FOR PERMIT" (FORM C-101) FOR SUCH PROPOSALS.)

1. Type of Well:
Oil Well ☐ Gas Well ☐ Other Water Injection

2. Name of Operator
Phillips Petroleum Company

3. Address of Operator
4001 Penbrook Street Odessa, TX 79762

4. Well Location
Unit Letter J : 1980 feet from the South line and 1980 feet from the East line
Section 15 Township 17-S Range 33-E NMPM County Lea

10. Elevation (Show whether DR, RKB, RT, GR, etc.)

4173' GL & 4183' RKB

11. Check Appropriate Box to Indicate Nature of Notice, Report, or Other Data

NOTICE OF INTENTION TO:

PERFORM REMEDIAL WORK ☐ PLUG AND ABANDON ☒
TEMPORARILY ABANDON ☐ CHANGE PLANS ☐
PULL OR ALTER CASING ☐ MULTIPLE COMPLETION ☐

OTHER: ☐

SUBSEQUENT REPORT OF:

REMEDIAL WORK ☐ ALTERING CASING ☐
COMMENCE DRILLING OPNS. ☐ PLUG AND ABANDONMENT ☐
CASING TEST AND CEMENT JOB ☐

OTHER: ☐

12. Describe Proposed or Completed Operations (Clearly state all pertinent details, and give pertinent dates, including estimated date of starting any proposed work). SEE RULE 1103. For Multiple Completions: Attach wellbore diagram of proposed completion or recompilation.

Plug and Abandon procedure, before and after wellbore schematics attached.

CONDITIONS OF APPROVAL *

All pits must be lined with plastic

All shoe plugs, stub plugs & cement plugs above perforations must be tagged

All cement plugs pumped minimum 25 sxs & be minimum 100 feet

*
THE COMMISSION MUST BE NOTIFIED 24 HOURS PRIOR TO THE BEGINNING OF PLUGGING OPERATIONS FOR THE C-103 TO BE APPROVED.

I hereby certify that the information above is true and complete to the best of my knowledge and belief.

SIGNATURE Stanley P. Linder for L. M. Sanders TITLE Supervisor, Reg./Pro. DATE 02/06/02

Type or print name L. M. Sanders

Telephone No. 915/368-1488

(This space for State use)

APPROVED BY

Conditions of approval, if any:

see above *

ORIGINAL SIGNED BY
PAUL F. KAUTZ
PETROLEUM ENGINEER

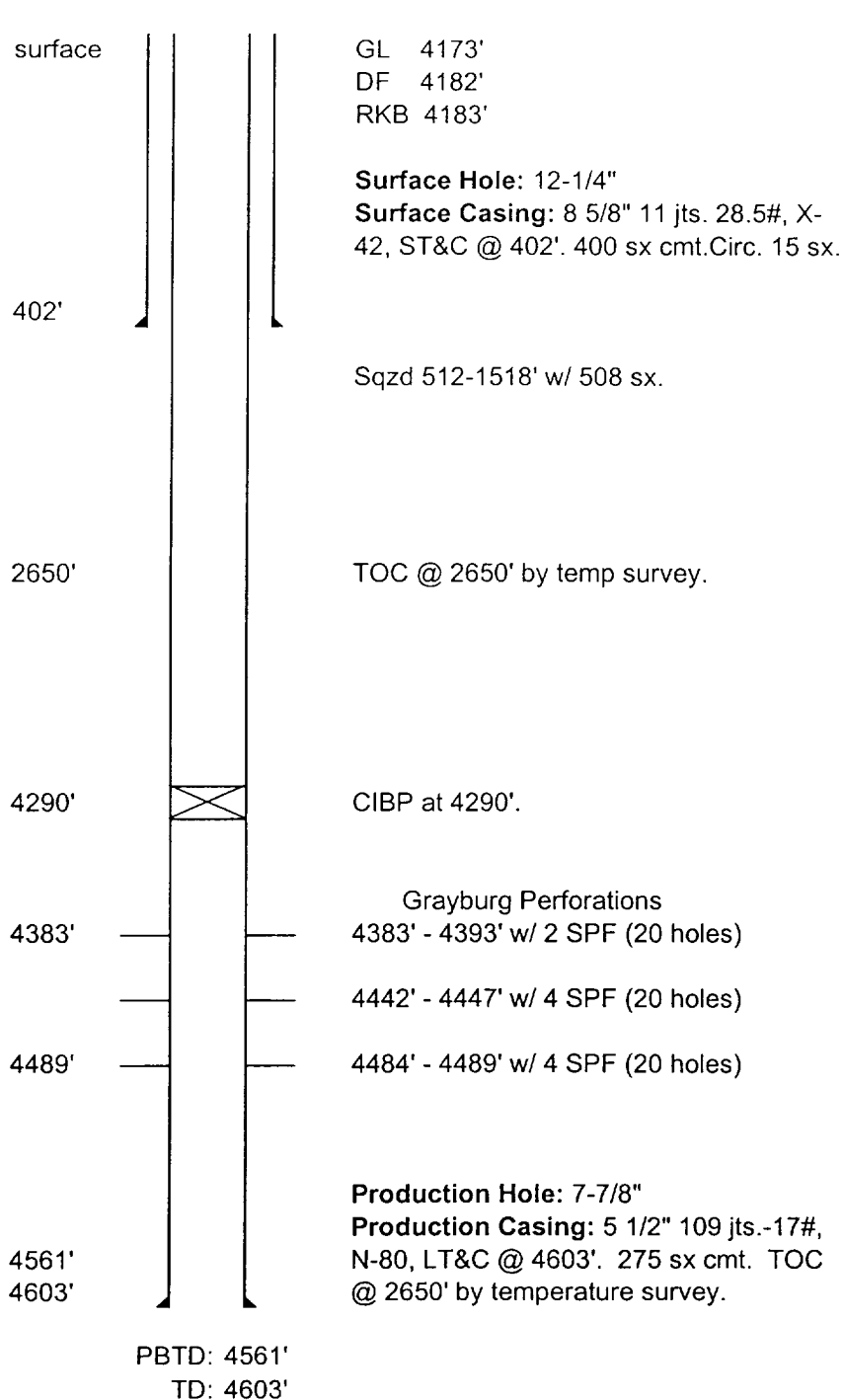
DATE FEB 13 2002

**PLUG AND ABANDON WELL PROCEDURE
PHILLIPS STATE E #19**

NOTE: Cement used is Class "C", density of 14.8 ppg, yield of 1.32 cubic feet per sack.

1. Notify NMOCD at (505) 393-6161, 24 hours prior to initiating plugging operations.
2. MIRU Plug & Abandon Package.
3. ND wellhead. NU PPCo. Class 1 shop tested BOP stack.
4. GIH w/ 2-3/8" WS open-ended and tag CIBP @ 4290'. Circulate 5-1/2" casing with 9.5 ppg mud-laden fluid.
5. Spot Plug No. 1, 60 sx., minimum interval: 4290'-3770', calculated interval: 4290'-3683'. The plug will cover the San Andres, Grayburg, & Queen.
8. POOH & LD to 3190'.
9. Spot Plug No. 2, 50 sx., calculated interval: 3190'-2684'. The plug will cover the Seven Rivers & Yates.
9. POOH w/ WS. MIRU wireline. Make gauge ring run to 1050'. POOH. GIH w/ perf gun & perforate 5-1/2" prod csg. at 1550'. POOH.
10. PU AD-1 rental packer & GIH w/ WS to 1000' & set packer. Attempt to establish circulation. Squeeze Plug No. 3, 40 sx, minimum interval: 1537'-1437', calculated interval: 1550'-1397'. Displace cement to 400' below packer. Covers the Rustler inside & outside 5-1/2 prod. csg. WOC.
10. Release packer & POOH.
11. MIRU wireline. GIH & perforate 5-1/2" prod. csg. at 475'. POOH.
12. GIH w/ 1 jt of WS & close pipe rams or pump down csg. valve. Attempt to establish circulation. Squeeze Plug No. 4, 75 sx., minimum interval: 452'-Surface', calculated interval: 475'-Surface. The plug will cover the surface csg. shoe & surface plug.
13. WOC. Visually tag cement and top off if necessary.
14. Cut off casing and wellhead 3' below GL and cap well. Install dry hole marker. Perform reclamation work.
15. Send forms and reports to: Phillips Regulatory
4001 Penbrook
Odessa, Texas 79762

**Phillips Petroleum Company - Southwest Region
Phillips State E #19**



Lease & Well No.: **Phillips State E #19**
Well Category: One Status : TA'd WIW
Area: New Mexico
Subarea: Caprock
Field : Maljamar Grayburg/San Andres
API Number: 30-025-24981
Legal Description: 1980' FSL, 1980' FEL, S15, T17S,R33E
Lea County, New Mexico
Spudded: 3/31/1975
Completed: 5/2/1975

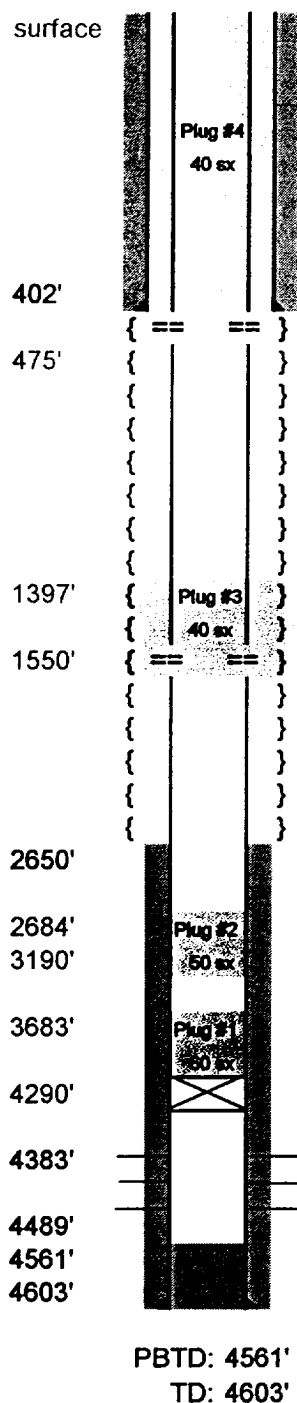
Well History:

- 6/83 Converted to WIW as per NMOCDC Order WFX No. 502. Ran 5 1/2" plastic coated AD-1 pkr on 2 3/8" IPC tbg to 4320'. Initiated inj 6/15/83. Prod before: 4 bopd, 0 bwpd, GOR 2000. Inj after: 187 bwpd at 1785 psig on 6/15/83.
- 4/90 Acdzd 4383-4489' overall w/ 2000 gal 20% NEFE HCl & 200 lbs rock salt in 3 stages. Inj before: P = 1900 psig. Inj after: 102 bw / 5 hrs at 1400 psig on 4/14/90.
- 3/95 Tstd csg for leaks from 4310' to surf. None detected. CO fill from 4380-4558'. Acdzd 4383-4489' OA w/ 2000 gal 15% NEFE HCl and 500 lbs rock salt in 3 stages. Set AD-1 pkr @ 4320'. Ret to inj 3/11/95. Inj after: 58 bwpd at 2200 psig on 7/27/95.
- 7/01 Isolated csg leak from 985-1174'. Sqzd w/ 285 sx cmt. CO cmt. Isolated csg leak from 512-1518'. Sqzd w/ 126 sx cmt. CO cmt. Isolated csg leak from 512-1018'. Sqzd w/ 97 sx cmt. CO cmt. Set CIBP at 4290'. Tstd csg to 600 psi. Lost 145 psi in 8 min.

Formation Tops:

Rustler	1487'
Salado	1676'
Yates	2793'
Seven Rivers	3140'
Queen	3770'
Grayburg	4232'
San Andres	4526'

**Phillips Petroleum Company - Southwest Region
Phillips State E #19**



GL 4173'
DF 4182'
RKB 4183'

Surface Hole: 12-1/4"

Surface Casing: 8 5/8" 11 jts. 28.5#, X-42, ST&C @ 402'. 400 sx cmt. Circ. 15 sx.

Squeeze Plug #4 - 115 sx., min interval: 452'-surf, calc'd interval: 475'-surf. Covers the surface csg. shoe and surface plug.

Sqzd 512-1518' w/ 508 sx.

Squeeze Plug #3 - 40 sx., calc'd interval: 1550'-1397'. Covers the Seven Rivers & Yates inside & outside 5-1/2" prod. csg.

TOC @ 2650' by temp survey.

Spot Plug #2 - min 50 sx., calc'd interval: 3190'-2684'. Covers the Seven Rivers & Yates.

Spot Plug #1 - 60 sx., min interval: 4290'-3770', calc'd interval: 4290'-3683'. Covers the San Andres, Grayburg, & Queen.
CIBP at 4290'.

Grayburg Perforations

4383' - 4393' w/ 2 SPF (20 holes)
4442' - 4447' w/ 4 SPF (20 holes)
4484' - 4489' w/ 4 SPF (20 holes)

Production Hole: 7-7/8"

Production Casing: 5 1/2" 109 jts. -17#, N-80, LT&C @ 4603'. 275 sx cmt. TOC @ 2650' by temperature survey.

Lease & Well No.: **Phillips State E #19**
Well Category: One Status: TA'd WIW
Area: New Mexico
Subarea: Caprock
Field: Maljamar Grayburg/San Andres
API Number: 30-025-24981
Legal Description: 1980' FSL, 1980' FEL, S15, T17S, R33E
Lea County, New Mexico
Spudded: 3/31/1975
Completed: 5/2/1975

Well History:

6/83 Converted to WIW as per NMOC Order WFX No. 502. Ran 5 1/2" plastic coated AD-1 pkr on 2 3/8" IPC tbg to 4320'. Initiated inj 6/15/83. Prod before: 4 bopd, 0 bwpd, GOR 2000. Inj after: 187 bwpd at 1785 psig on 6/15/83.

Acddz 4383-4489' overall w/ 2000 gal 20% NEFE HCl & 200 lbs rock salt in 3 stages. Inj before: P = 1900 psig. Inj after: 102 bw / 5 hrs at 1400 psig on 4/14/90.

3/95 Tstd csg for leaks from 4310' to surf. None detected. CO fill from 4380-4558'. Acddz 4383-4489' OA w/ 2000 gal 15% NEFE HCl and 500 lbs rock salt in 3 stages. Set AD-1 pkr @ 4320'. Ret to inj 3/11/95. Inj after: 58 bwpd at 2200 psig on 7/27/95.

7/01 Isolated csg leak from 985-1174'. Sqzd w/ 285 sx cmt. CO cmt. Isolated csg leak from 512-1518'. Sqzd w/ 126 sx cmt. CO cmt. Isolated csg leak from 512-1018'. Sqzd w/ 97 sx cmt. CO cmt. Set CIBP at 4290'. Tstd csg to 600 psi. Lost 145 psi in 8 min.

Formation Tops:

Rustler	1487'
Salado	1676'
Yates	2793'
Seven Rivers	3140'
Queen	3770'
Grayburg	4232'
San Andres	4526'