

NEW MEXICO OIL CONSERVATION COMMISSION
WELL LOCATION AND ACREAGE DEDICATION PLAT

Form No. 1
Supersedes C-128
Effective 1965

All distances must be from the outer boundaries of the Section

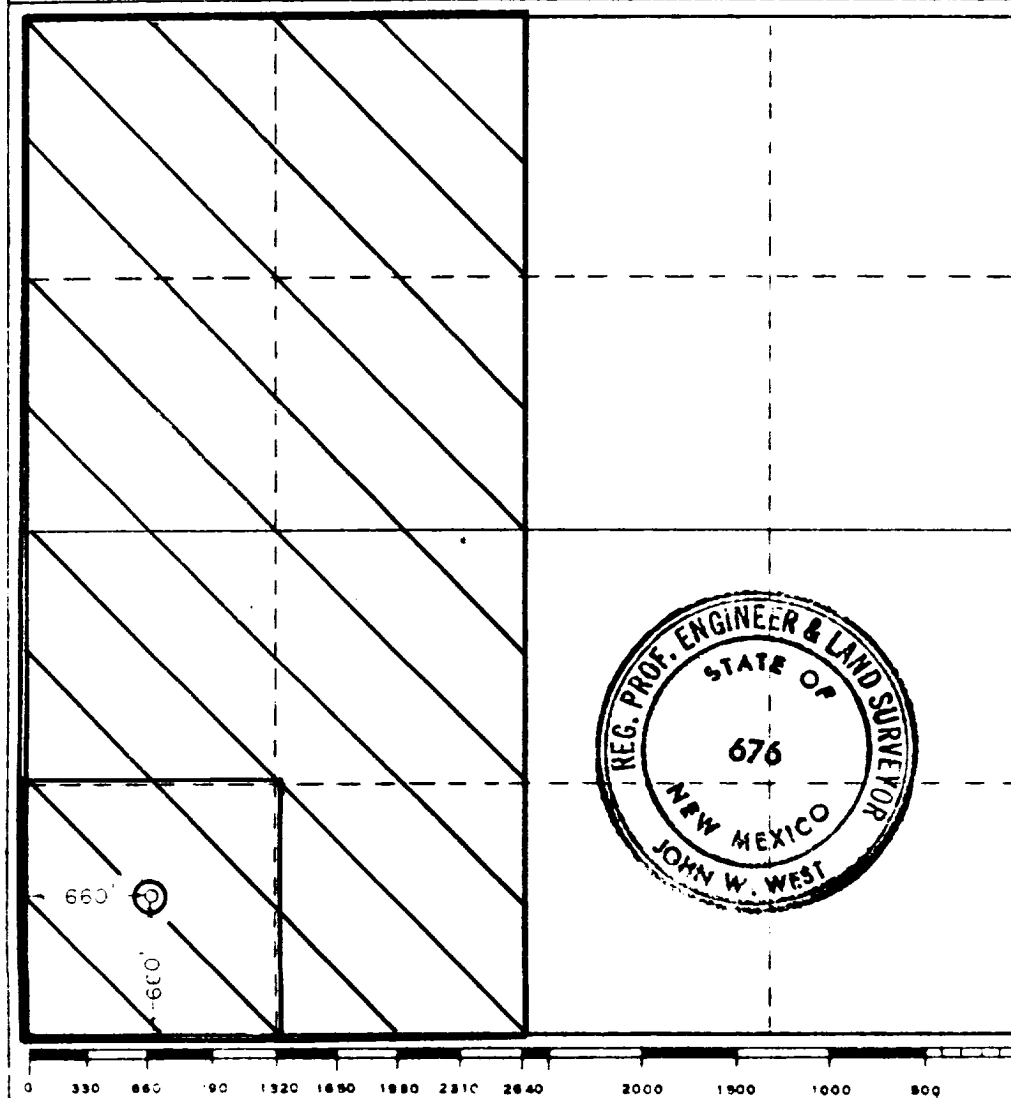
Operator DALCO OIL COMPANY			Lease N. Eidson Fee		Well No. 1
Tract Number M	Section 34	Township 15 South	Range 34 East	County Lea	
Actual Well Location of Well:					
660 feet from the south line and		660 feet from the west line			
Ground Level Elev. 4075.0	Producing Formation Penn	Pool Wildcat	Dedicated Acreage 320		

1. Outline the acreage dedicated to the subject well by colored pencil or hatchure marks on the plat below.
2. If more than one lease is dedicated to the well, outline each and identify the ownership thereof (both as to working interest and royalty).
3. If more than one lease of different ownership is dedicated to the well, have the interests of all owners been consolidated by communitization, unitization, force-pooling, etc?

☐ Yes ☐ No If answer is "yes," type of consolidation _____

If answer is "no," list the owners and tract descriptions which have actually been consolidated (Use reverse side of this form if necessary.) _____

No allowable will be assigned to the well until all interests have been consolidated (by communitization, unitization, forced-pooling, or otherwise) or until a non-standard unit, eliminating such interests, has been approved by the Commission.



CERTIFICATION

I hereby certify that the information contained herein is true and complete to the best of my knowledge and belief.

C. H. Madsen

Name

C. H. Madsen

Position

Division Geologist

Company

Dalco Oil Company

Date

August 17, 1976

I hereby certify that the well location shown on this plat was plotted from field notes of actual surveys made by me or under my supervision, and that the same is true and correct to the best of my knowledge and belief.

Date Surveyed

August 14, 1976

Registered Professional Engineer and/or Land Surveyor

John W. West

676

RECEIVED

DATE 1/19/77
CONSERVATION COMM.
HOBBS, N. M.